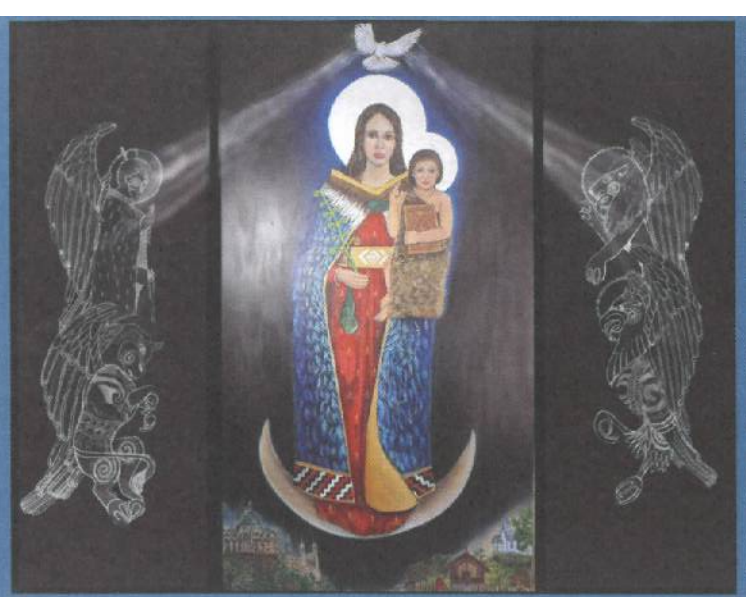


The Angelus

St Mary of the Angels Parish
The National Shrine of New Zealand
Mary, Mother of God, Assumed into Heaven
www.smoa.org.nz

St Mary of the Angels Church
17 Boulcott St, Wellington Central (04) 473 8074

St Joseph's Church
154 Brougham St, Mt Victoria, Wellington (04) 385 0915



Ko Hāia Māria, te Matua Wāhine o te Atua – Holy Mary, Mother of God

11 August 2024, 19th Sunday in Ordinary Time

Parish Priest

Fr Kevin Mowbray SM
parish.priest@smoa.org.nz

Assistant Priests

Fr Joe Savei SM
dennys4life@hotmail.com

Fr Michael Young SM
myoungsm@gmail.com

Pastoral Worker

Sr Frances Gibbs CSB

Director of Music

William McElwee
wmcelweemusic@gmail.com

Parish Accountant

accounts@smoa.org.nz

St Mary of the Angels Church Office

office.manager@smoa.org.nz; 04 473 8074

St Joseph's Church Office

st.josephs.office@xtra.co.nz; 04 385 0915

St Mary of the Angels Church

MASSES

Sunday 7am, 9am, 11am, 5pm
Mon-Fri 7.30am, 12.05pm, 5.15pm
Saturday 11am
Mass of Anointing- 4th Saturday of the month

ADORATION

Mon-Fri 6.30am - 7.20am
Friday 11am - Noon

RECONCILIATION

Mon-Thurs 11.30am - Noon
12.30pm - 1pm
4.30pm - 5pm
Friday 11am - 11.50am
12.30pm - 1pm
4.30pm - 5pm
Saturday 10.30am - 10.55am
4pm - 5pm

St Joseph's Church

MASSES

Sunday 9.30am
Tuesday 8.30am

BAPTISMS

St Mary of the Angels Church

Baptisms; 2pm on 2nd and 4th Sundays each month

St Joseph's Church

Baptisms on 3rd Sunday of each month.
Please arrange through Parish Office.

We do not live on bread alone but on every word that comes from the mouth of God; and that Word from the mouth of God has become flesh in the Person of Jesus Christ who says, "I am the Bread of Life... Anyone who eats this bread will live for ever" (cf. John 6:48, 51). In our first reading, the Prophet Elijah was sustained with the food given to him by God as he journeyed to meet God on Horeb, the mountain of God. And in our gospel reading, Jesus – the Word of God made flesh – gives himself to us as the Bread of Life, sustaining us on our journey through this earthly life to meet with God on the new mountain of God: Mount Zion of the heavenly Jerusalem, when the fulness of God's kingdom is revealed.

If Jesus is the Bread of Life (God's Word made flesh proceeding from the mouth of God), Jesus is the wisdom of God accessible to all who believe. What is the difference between knowledge, understanding and wisdom? Simply put, knowledge enables us to distinguish one thing from another, like people who are "walking encyclopaedias". Understanding forms networks of meaning among the things we know, like any enquiring or reasoning mind. But wisdom, wisdom relates what we know and understand to make sense of (or give purpose to) our lives – not just the 'what' or the 'how' of life, but the 'why' of life. So, for us, Jesus the Bread of Life is also the wisdom of God telling us the 'why' of our lives: that we live not just for ourselves but for God. We live not just for this life but for eternal life.

So the Bread of Life we eat sustains us on our journey to our eternal destiny in God. He shows us the Way – what we need to know to make that journey; the Truth – how we are to grow in our understanding of the demands of that journey; and the Life – that gives us the purpose, the 'why' for making that journey in the first place and the 'why' that sustains us to the end of the journey. "Your ancestors ate the manna in the desert and they are dead but this is the bread come down from heaven so that a person may eat it and not die" (cf. John 6:49-50).

Fr Michael Young sm—Assistant Priest

This Week's Readings

First Reading: Exodus 16:2-4, 12-15

I will rain bread from heaven upon to you.

Second Reading: Ephesians 4:17, 20-24

Put on the new person that has been created in God's image.

Gospel: John 6:24-35

Whoever comes to me will never be hungry; whoever believes in me will never thirst.

Next Week's Readings

First Reading: 1 Kings 17:8-16

Psalm: 33

Second Reading: Colossians 3:12-17

Gospel: Matthew 6:25-34



Last Sunday's Collection

Sunday Collection: \$3,649

Automatic Payments: \$6,044

Total: \$9,693

Genesis to Jesus Bible Study

The Symbolon Team bring you the 'Genesis to Jesus' bible study - a series designed to help ordinary Catholics grow in their knowledge of the Scriptures while deepening their understanding of the riches of our faith. 12 sessions in all, held every second Tuesday with the final session on **Tuesday 13 August** from 6-7pm in the St Mary of the Angels' Parish Hall. Koha appreciated, supper provided.

Thought for the Week

If you live for people's acceptance
you'll die from their rejection

Responsorial Psalm 33

R. Taste and see the goodness of the Lord

I will bless the Lord at all times,
his praise always on my lips;
in the Lord my soul shall make its boast.
The humble shall hear and be glad. **R.**

Glorify the Lord with me.
Together let us praise his name.
I sought the Lord and he answered me;
from all my terrors he set me free. **R.**

Mere men ate the bread of angels.
Look towards him and be radiant;
let your faces not be abashed.
This poor man called; the Lord heard him
and rescued him from all his distress. **R.**

The angels of the Lord is encamped
around those who revere him, to rescue them.
Taste and see that the Lord is good.
He is happy who seeks refuge in him. **R.**



Gusta-te et vi-de-te quo-ni-am su-a-vis est Domi-nus.

Oh taste and see how sweet the Lord is.

St Joseph's Men's Book Group

Tuesday 13 August, Bill Pearce room, St Joseph's Church, Mt Victoria.

Sunday Mass Parking

If you are interested in obtaining a carpark for Sunday Mass, please contact the Parish office for more information.

Mass has been offered for:

Recently Deceased: Prudensia Loau, Ivan Smith, Pat McDonnell, Willie Leota

Anniversaries: Zenaida Angeles, Anna Tait-Jamieson, Maria Kasperowicz, Suzanne Judd, Donald Urquhart-Hay, Kraft D'Souza, Vincent Rosario, Robert Teh, Shirley Mahony

Prayers for the Sick: Jeanette Papesch, Kirwan sisters, Dianne Sweet, Losalia Leo, John Mora, Kerry Barber, Pam Finlayson, Francisca Sparnaay, Pat Mahony, Kay De Bernardo, Saturino Vilorio, Jim Meachen, Dr Bill Glass, Stephen George, Greg Hayward, Kathryn Frances Lloyd, Fr Joe Savesi sm, Neni Beres, Yvonne D'Souza, Joan Wolland, Julia Choquette



Please remember these and any others in the Parish who are ill. If you know of anyone confined to their home or who needs a visit with Holy Communion, please contact Sister Frances at the parish office.

LT
M^cGuinness
LIMITED
BUILDING CONTRACTORS

9 Francis Place,
PO Box 9639, Wellington
Phone (04) 384 8455
Email: ltm@mcguinness.co.nz

Councillor
Nicola Young
representing Lambton ward

*Please contact me if I can help
with a City Council issue*

021 654 844
Nicola.Young@wcc.govt.nz

DEVINE LAW
LIMITED

For your legal requirements
legal knowledge, human wisdom
Phone Fintan Devine on (04) 495 3747
Email fintan@devinelaw.co.nz
www.devinelaw.co.nz

National Shrine Prayer

E te Atua , Creator of heaven and earth,
Source of all life, giver of all that is good,
We pray for Aotearoa New Zealand

And for all who come to her shores and make it their home.

We recall with gratitude our forebears in the Faith,
Who dedicated this country to the care of Mary,
Mother of God, assumed into heaven.

Pour out your Spirit upon us as we seek to respond to you,
Bringing your peace and harmony to this sacred land.

May we continue to praise you as we carry the Good News
of Jesus Christ to our brothers and sisters.

We make this prayer through Christ, our Lord. Amen.
Mary, assumed into heaven; pray for us.

Poverty, by Design

The systems that hold families in poverty, and what needs to change. A series of lectures is being held at the Stout Centre Victoria University, Pipitea Campus. Wednesdays at 5.30pm 24 July to 28 August. For more details go to <https://www.wgtn.ac.nz/stout-centre>

Carparks for Rent

The few church carparks are coming up for rent for use on Monday-Friday. If you are interested, please contact Abby in the Parish Office—04 473 8074

Rite of Christian Initiation of Adults Program

The Rite of Christian Initiation of Adults (RCIA) programme will commence again on the 12th of September for anyone who is interested in joining our Catholic Community. This programme runs from September to May and involves weekly group meetings to learn about and discuss our Catholic Faith. If anyone is interested in joining this programme, or would like to support as a leader or sponsor in this programme, please make contact with Fr Michael on mlyoung@gmail.com. Registration closes once the programme begins.

Children's Sacramental Programme

Children who are Year 4 and above are encouraged to receive the Sacraments of Confirmation, First Reconciliation and First Communion. The next programme starts on 17 September 2024. Please contact the Parish Office at office.manager@smoa.org.nz or 04 473 8073 for more information and to enrol your child.

August Mass Cancellations

Due to the absence of Priests there will be no 5.15pm Mass at St Mary of the Angels Church until Monday 19 August (apart from August 15).

Feast of the Assumption—15 August

The Feast of the Assumption on Thursday 15 August is a Holy Day of Obligation. Mass Times are 7.30am, 12.05pm and 5.15pm

Taize Chant

Change of location and time. Held in the Village in the Park Chapel, 130 Rintoul Street. Chapel is located between row a and b apartments on the ground level. Sunday 11 August at 5pm.

Safeguarding Workshop

Safeguarding is the responsibility of us all. We are all challenged to work to develop a Culture of Safeguarding within the Church so that all those we interact with feel comfortable, respected and valued. Kevin Plant, the Archdiocese Safeguarding Coordinator, will be holding a Safeguarding Workshop at St Joseph's Church, Brougham Street, Mt Victoria on Monday 19 August commencing at 5pm. We would encourage all those involved in Ministries in our Parish to attend along with any Parishioners who are interested in increasing their understanding of Safeguarding.

Free Public Lecture

“The Puzzle of Romans 13: Christians, Political Authority, and the Apostle Paul”

By Professor Beverly Gaventa, a leading New Testament scholar, who was the Distinguished Professor of New Testament Interpretation at Baylor University in Texas, and Helen H.P. Manson Professor of New Testament Literature and Exegesis Emerita at Princeton Theological Seminary. Held on **Monday 19th August, 6:30pm** at St John's in the City, corner of Dixon and Willis Streets.

No Holy Hour

There will be no Holy Hour in the Cathedral of the Sacred Heart for the months of July and August. We will be back in September.



ST MARY OF THE ANGELS PARISH ONGOING MAINTENANCE APPEAL

I would like to help preserve St Mary of the Angels and St Joseph's Churches.

Name:

Address:

Email:

Tel:

My contribution will be made by:

Direct Credit

Cheque

Cash

PLEASE SPECIFY AMOUNT

\$

Donations can be sent to:

Ongoing Maintenance Fund

St Mary of the Angels Parish

17 Boulcott St, Wellington 6011

Bank Account Details:

SMOA - Parish Account

02-0536-0003242-24

BNZ, Lambton Quay, Wellington

St Mary of the Angels is registered with the Charities Commission. All donations are tax deductible and a receipt issued.

Proclaiming the Gospel of Life in a Post-Christian Culture
 Held on Monday 26 August | 7pm – 9pm | Home of Compassion,
 Wellington. Don't miss this exciting opportunity to hear Fr. Shenan Bo-
 quet (USA) give an informative and engaging presentation about *Proclaim-
 ing the Gospel of Life in a Post-Christian Culture*. He will discuss the dignity of
 the human person and address the life and family issues of concern today.
 For more info contact Simon Archer: 021 400 729 | simon@fli.org.nz or
 visit www.fli.org.nz/speaking-tour-2024

Life Teen Leadership Convention

30 August - 1st September 2024. International Speakers Breakout Groups/
 Networking. Held at Sacred Heart College Lower Hutt, Wellington. \$120
 Per Person. Year 13 +. Find out more www.lifeteen.nz

Living Wage Aotearoa

How can we help? Actions agreed on from a recent parish meeting at St
 Josephs

1. Encourage all parishioners to be well informed about the living wage
 movement, talk with others (www.livingwage.org.nz)
2. Social Justice Group to request SMOA Parish Council consider formally
 becoming a member of the Living Wage Movement.
3. Encourage all parishioner with connections to Catholic Schools (eg.
 staff, parents and grand parents, BOT reps) to get behind the initiative for
 Catholic Schools to work towards becoming Living Wage Schools.

SMOA Church App

If you haven't already downloaded our new Parish App onto your smart
 phone, please do! On the app, you'll be able to view the newsletters, Mass
 times, upcoming events and more. You will also have the option to receive
 alert notifications, particularly if you are a part of a Parish group or ministry.
 To download the app, follow the steps below:

1. Go to your App Store or Google Play Store and search
 "ChurchAppsNZ"
2. Download the app, and then select St Mary of the Angels as a Parish
3. The app will then prompt you to select which "alert groups" you want
 to be a part of. Select as many or as few of these groups as you like. You
 will be able to change this later if you need to.

If you need any help setting this up, please do not hesitate to contact Abby
 at the parish office.



Rachel's Vineyard Retreats New Zealand

"Healing the pain of abortion, one weekend at a time..."

Confidential and sensitive support for anyone
 whose life has been touched by abortion.

"Wipe the tears from your eyes....there is hope for your future." Jer31

info@rachelvineyard.org.nz

027 254 9222

www.rachelvineyard.org.nz

Mahony Horner Lawyers



Know where you stand

www.mhllaw.co.nz



Everard & Antonella Aspell

for all your Real Estate Requirements

Everard Aspell
 0274 445 248
everard.aspell@raywhite.com

Antonella Aspell
 0274 453 088
antonella.aspell@raywhite.com



Licensed under REAA 2008

Harbour City

"FUNERAL HOME"



Serving the Archdiocese of
 Wellington for 35 years.

Wellington

56 Onepu Road, Kilbirnie

Phone: 387 8301

hcfh.co.nz



A LEGACY OF FAITH



Remembering St Mary of the
 Angels or St Joseph's in your will
 provides an ideal opportunity to
 make a statement of your faith
 and to give resources that will
 support your Church for years to
 come.

Please contact the Parish Office for
 further details.

Phone (04) 473 8074.



NEW WORLD
 Wellington City

Open 7 days 7am - 11pm
 279 Wakefield Street
 Ph 04 384 8054
[www.newworld.co.nz/
 wellingtoncity](http://www.newworld.co.nz/wellingtoncity)