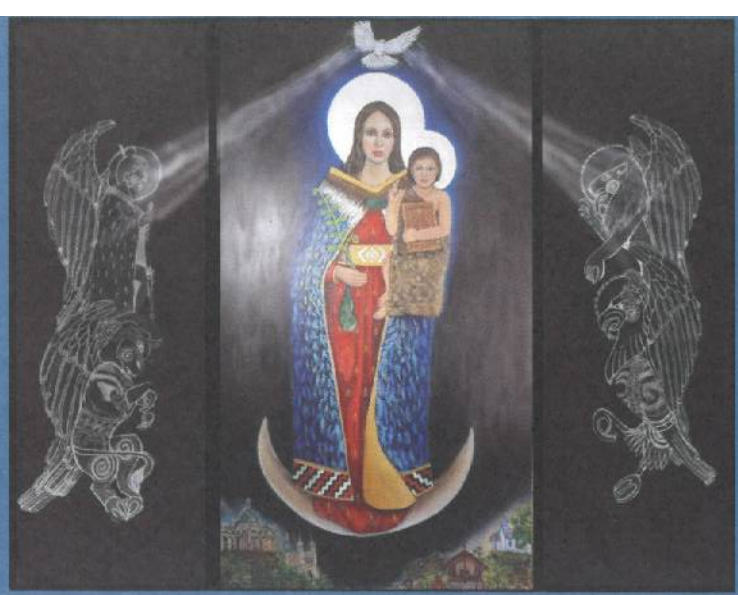


# The Angelus

St Mary of the Angels Parish  
The National Shrine of New Zealand  
Mary, Mother of God, Assumed into Heaven  
www.smoa.org.nz

St Mary of the Angels Church  
17 Boulcott St, Wellington Central (04) 473 8074

St Joseph's Church  
154 Brougham St, Mt Victoria, Wellington (04) 385 0915



Ko Hina Mariri, te Mama Wāhine o te Atua - Holy Mary, Mother of God

4 August 2024, 18th Sunday in Ordinary Time

## "BUILD ME A SANCTUARY SO THAT I CAN LIVE AMONG THEM" (Exodus 25:8)

It was Jeremiah O'Reilly OFM. Cap who built the first church on this site in 1843. By 1874, the Catholic Community had grown and a larger wooden church was built and blessed with the name Saint Mary of the Angels in keeping with the Franciscan tradition of naming such first Churches in a place after the mother church of the Franciscans in Assisi.

### SUB MARIA NOMINE

In 1875, with Fr O'Reilly ailing, the Church was entrusted to the Society of Mary. The Marists continue to this day as Custodians of this precious place. In 1922, the present Church was finished, the previous one having burned down. In 2022 the Bishops of New Zealand dedicated this Church as the National Shrine of Mary Mother of God assumed into Heaven.

### THE GUARDIANS

For almost 150 years, the Marists have faithfully cared for the Church but now, with the number of Priests declining through age and ill health, a group of parishioners was formed to assist with caring for this special place. Our task is to ensure that there is always, to the best of our ability, someone in the Church to keep an eye on the Health and Safety of this Sanctuary and those who visit it, whilst the doors are open throughout every day.

## "CAN YOU SHARE ONE HOUR WITH ME" (Mk 14:37)

Most of us are ourselves ageing and less able to keep up with this Ministry and we seek others to help. The commitment is just one hour each week on a rostered basis. The security of the Church has just been upgraded and Abby is able to monitor the comings and goings from her office, but there is nothing like the personal touch!

As well as being a presence in the Church, it can be a time for personal reflection or private reading, it might be a quiet place to study, even seek inspiration? For the city worker a place of relief from the hurly-burly of a busy day? If you are out of the CBD, a car park is available

If you feel able to share just one hour, please contact Abby in the parish office, or myself

Tony Sutcliffe—*Kaiwhakahaere Rauemi (Co Ordinator)*

### Parish Priest

Fr Kevin Mowbray SM  
parish.priest@smoa.org.nz

### Assistant Priests

Fr Joe Savevi SM  
dennys4life@hotmail.com

Fr Michael Young SM  
mlyoungsm@gmail.com

### Pastoral Worker

Sr Frances Gibbs CSB

### Director of Music

William McElwee  
wmcelweemusic@gmail.com

### Parish Accountant

accounts@smoa.org.nz

### St Mary of the Angels Church Office

office.manager@smoa.org.nz; 04 473 8074

### St Joseph's Church Office

st.josephs.office@xtra.co.nz; 04 385 0915

### St Mary of the Angels Church

#### MASSES

Sunday 7am, 9am, 11am, 5pm  
Mon-Fri 7.30am, 12.05pm, 5.15pm  
Saturday 11am  
Mass of Anointing- 4th Saturday of the month

#### ADORATION

Mon-Fri 6.30am - 7.20am  
Friday 11am - Noon

#### RECONCILIATION

Mon-Thurs 11.30am - Noon  
12.30pm - 1pm  
4.30pm - 5pm  
Friday 11am - 11.50am  
12.30pm - 1pm  
4.30pm - 5pm  
Saturday 10.30am - 10.55am  
4pm - 5pm

### St Joseph's Church

#### MASSES

Sunday 9.30am  
Tuesday 8.30am

#### BAPTISMS

### St Mary of the Angels Church

Baptisms; 2pm on 2nd and 4th Sundays each month

### St Joseph's Church

Baptisms on 3rd Sunday of each month.  
Please arrange through Parish Office.

## This Week's Readings

**First Reading:** Exodus 16:2-4, 12-15

*I will rain bread from heaven upon to you.*

**Second Reading:** Ephesians 4:17, 20-24

*Put on the new person that has been created in God's image.*

**Gospel:** John 6:24-35

*Whoever comes to me will never be hungry; whoever believes in me will never thirst.*

## Next Week's Readings

**First Reading:** 1 Kings 17:8-16

**Psalm:** 33

**Second Reading:** Colossians 3:12-17

**Gospel:** Matthew 6:25-34



### Last Sunday's Collection

Sunday Collection: \$3,619

Automatic Payments: \$3,994

**Total: \$7,613**

### Genesis to Jesus Bible Study

The Symbolon Team bring you the 'Genesis to Jesus' bible study - a series designed to help ordinary Catholics grow in their knowledge of the Scriptures while deepening their understanding of the riches of our faith. 12 sessions in all, held every second Tuesday with the final session on **Tuesday 13 August** from 6-7pm in the St Mary of the Angels' Parish Hall. Koha appreciated, supper provided.

### Thought for the Week

If you live for people's acceptance  
you'll die from their rejection

### Mass has been offered for:

**Recently Deceased:** Prudensia Loau, Ivan Smith, Pat McDonnell, Willie Leota

**Anniversaries:** Aiden McLean, James Baird, Paul Veltman, Scott Fraser, Kenneth Bates, Barbara Ross, Rosina Walker, Fr John Goulter sm

**Prayers for the Sick:** Jeanette Papesch, Kirwan sisters, Dianne Sweet, Losalia Leo, John Mora, Kerry Barber, Pam Finlayson, Francisca Sparnaay, Pat Mahony, Kay De Bernardo, Saturino Vilorio, Jim Meachen, Dr Bill Glass, Stephen George, Greg Hayward, Kathryn Frances Lloyd, Fr Joe Savesi sm, Neni Beres, Yvonne D'Souza, Joan Wolland, Julia Choquette



*Please remember these and any others in the Parish who are ill. If you know of anyone confined to their home or who needs a visit with Holy Communion, please contact Sister Frances at the parish office.*

## Responsorial Psalm 77

**R. The Lord gave them bread from heaven**

The things we have heard and understood,  
the things our fathers have told us,  
we will tell to the next generation:  
the glories of the Lord and his might. **R.**

He commanded the clouds above  
and opened the gates of heaven.  
He rained down manna for their food,  
and gave them bread from heaven. **R.**

Mere men ate the bread of angels.  
He sent them abundance of food.  
He brought them to his holy land,  
to the mountain which his right hand had won. **R.**



**Domi-nus pa-nem coeli de-dit e-is.**

*The Lord hath given them the bread of heaven.*

### Poverty, by Design

The systems that hold families in poverty, and what needs to change. A series of lectures is being held at the Stout Centre Victoria University, Pipitea Campus. Wednesdays at 5.30pm 24 July to 28 August. For more details go to <https://www.wgtn.ac.nz/stout-centre>

### Carparks for Rent

The few church carparks are coming up for rent for use on Monday-Friday. If you are interested, please contact Abby in the Parish Office—04 473 8074

### Sunday Mass Parking

If you are interested in obtaining a carpark for Sunday Mass, please contact the Parish office for more information.

**L.T.**  
**McGuinness**  
LIMITED  
BUILDING CONTRACTORS

9 Francis Place,  
PO Box 9639, Wellington  
Phone (04) 384 8455  
Email: ltm@mcguinness.co.nz

Councillor

**Nicola Young**

representing Lambton ward

*Please contact me if I can help  
with a City Council issue*

**021 654 844**

**Nicola.Young@wcc.govt.nz**

**DEVINE LAW**

**L I M I T E D**

For your legal requirements  
legal knowledge, human wisdom  
Phone Fintan Devine on (04) 495 3747  
Email [fintan@devinelaw.co.nz](mailto:fintan@devinelaw.co.nz)  
[www.devinelaw.co.nz](http://www.devinelaw.co.nz)

### National Shrine Prayer

E te Atua , Creator of heaven and earth,  
Source of all life, giver of all that is good,

We pray for Aotearoa New Zealand

And for all who come to her shores and make it their home.

We recall with gratitude our forebears in the Faith,

Who dedicated this country to the care of Mary,  
Mother of God, assumed into heaven.

Pour out your Spirit upon us as we seek to respond to you,  
Bringing your peace and harmony to this sacred land.

May we continue to praise you as we carry the Good News  
of Jesus Christ to our brothers and sisters.

We make this prayer through Christ, our Lord. Amen.

Mary, assumed into heaven; pray for us.

### Thank you to the Community

The Committee members of the National Shrine would like to thank everyone for supporting the recent movie fundraiser. We raised almost \$500.00 which will be use in the promotion of the St Mary of the Angels as National Shrine of New Zealand and contribution towards the general maintenance of Ko Hata Maria, te Matua Wahine o te Atua, Holy Mary, Mother of God artwork. We are grateful for your continued support and appreciate your generosity.

### Rite of Christian Initiation of Adults Program

The Rite of Christian Initiation of Adults (RCIA) programme will commence again on the 12th of September for anyone who is interested in joining our Catholic Community. This programme runs from September to May and involves weekly group meetings to learn about and discuss our Catholic Faith. If anyone is interested in joining this programme, or would like to support as a leader or sponsor in this programme, please make contact with Fr Michael on [mlyoung@gmail.com](mailto:mlyoung@gmail.com). Registration closes once the programme begins.

### Children's Sacramental Programme

Children who are Year 4 and above are encouraged to receive the Sacraments of Confirmation, First Reconciliation and First Communion. The next programme starts on 17 September 2024. Please contact the Parish Office at [office.manager@smoa.org.nz](mailto:office.manager@smoa.org.nz) or 04 473 8073 for more information and to enrol your child.

### August Mass Cancellations

Due to the absence of Priests there will be no 5.15pm Mass at St Mary of the Angels Church until Monday 19 August.

### RCIA Sponsors

The Rite of Christian Initiation of Adults (RCIA) will begin again in our Parish this September. Once again, the Parish RCIA Core Team invites Parishioners to take up the important role of sponsor for those desiring to become full members of the Catholic Church. If you are interested in accompanying those who are thinking of sharing in our Catholic tradition, please get in touch with Fr. Michael via his email address: [mlyoungsm@gmail.com](mailto:mlyoungsm@gmail.com). In accompanying others we can grow and deepen knowledge and understanding of our own faith witness.

### Safeguarding Workshop

Safeguarding is the responsibility of us all. We are all challenged to work to develop a Culture of Safeguarding within the Church so that all those we interact with feel comfortable, respected and valued. Kevin Plant, the Archdiocese Safeguarding Coordinator, will be holding a Safeguarding Workshop at St Joseph's Church, Brougham Street, Mt Victoria on Monday 19 August commencing at 5pm. We would encourage all those involved in Ministries in our Parish to attend along with any Parishioners who are interested in increasing their understanding of Safeguarding.

### Free Public Lecture

#### *"The Puzzle of Romans 13: Christians, Political Authority, and the Apostle Paul"*

By Professor Beverly Gaventa, a leading New Testament scholar, who was the Distinguished Professor of New Testament Interpretation at Baylor University in Texas, and Helen H.P. Manson Professor of New Testament Literature and Exegesis Emerita at Princeton Theological Seminary. Held on **Monday 19th August, 6:30pm** at St John's in the City, corner of Dixon and Willis Streets.

### No Holy Hour

There will be no Holy Hour in the Cathedral of the Sacred Heart for the months of July and August. We will be back in September.



## ST MARY OF THE ANGELS PARISH ONGOING MAINTENANCE APPEAL

I would like to help preserve St Mary of the Angels and St Joseph's Churches.

Name:

Address:

Email:  Tel:

My contribution will be made by:

- Direct Credit
- Cheque PLEASE SPECIFY AMOUNT
- Cash

Donations can be sent to:  
Ongoing Maintenance Fund  
St Mary of the Angels Parish  
17 Boulcott St, Wellington 6011

**Bank Account Details:**  
SMOA - Parish Account  
02-0536-0003242-24  
BNZ, Lambton Quay, Wellington

St Mary of the Angels is registered with the Charities Commission. All donations are tax deductible and a receipt issued.

**Proclaiming the Gospel of Life in a Post-Christian Culture**  
 Held on Monday 26 August | 7pm – 9pm | Home of Compassion,  
 Wellington. Don't miss this exciting opportunity to hear Fr. Shenan Bo-  
 quet (USA) give an informative and engaging presentation about *Proclaim-  
 ing the Gospel of Life in a Post-Christian Culture*. He will discuss the dignity of  
 the human person and address the life and family issues of concern today.  
 For more info contact Simon Archer: 021 400 729 | [simon@fli.org.nz](mailto:simon@fli.org.nz) or  
 visit [www.fli.org.nz/speaking-tour-2024](http://www.fli.org.nz/speaking-tour-2024)

### Living Wage Aotearoa

How can we help? Actions agreed on from a recent parish meeting at St Josephs

1. Encourage all parishioners to be well informed about the living wage movement, talk with others ([www.livingwage.org.nz](http://www.livingwage.org.nz))
2. Social Justice Group to request SMOA Parish Council consider formally becoming a member of the Living Wage Movement.
3. Encourage all parishioner with connections to Catholic Schools (eg. staff, parents and grand parents, BOT reps) to get behind the initiative for Catholic Schools to work towards becoming Living Wage Schools.

### SMOA Church App

If you haven't already downloaded our new Parish App onto your smart phone, please do! On the app, you'll be able to view the newsletters, Mass times, upcoming events and more. You will also have the option to receive alert notifications, particularly if you are a part of a Parish group or ministry. To download the app, follow the steps below:

1. Go to your App Store or Google Play Store and search "ChurchAppsNZ"
2. Download the app, and then select St Mary of the Angels as a Parish
3. The app will then prompt you to select which "alert groups" you want to be a part of. Select as many or as few of these groups as you like. You will be able to change this later if you need to.

If you need any help setting this up, please do not hesitate to contact Abby at the parish office.



### Rachel's Vineyard Retreats New Zealand

"Healing the pain of abortion, one weekend at a time..."

Confidential and sensitive support for anyone whose life has been touched by abortion.

"Wipe the tears from your eyes....there is hope for your future." Jer31

[info@rachelvineyard.org.nz](mailto:info@rachelvineyard.org.nz)

027 254 9222

[www.rachelvineyard.org.nz](http://www.rachelvineyard.org.nz)

## Mahony Horner Lawyers

Know where you stand

[www.mhllaw.co.nz](http://www.mhllaw.co.nz)



### Everard & Antonella Aspell

for all your Real Estate Requirements

Everard Aspell  
 0274 445 248  
[everard.aspell@raywhite.com](mailto:everard.aspell@raywhite.com)

Antonella Aspell  
 0274 453 088  
[antonella.aspell@raywhite.com](mailto:antonella.aspell@raywhite.com)

**RayWhite**

Licensed under REAA 2008

## Harbour City

" FUNERAL HOME "



Serving the Archdiocese of Wellington for 35 years.

### Wellington

56 Onepe Road, Kilbirnie

Phone: 387 8301

[hcfh.co.nz](http://hcfh.co.nz)



## A LEGACY OF FAITH



Remembering St Mary of the Angels or St Joseph's in your will provides an ideal opportunity to make a statement of your faith and to give resources that will support your Church for years to come.

Please contact the Parish Office for further details.

Phone (04) 473 8074.



## NEW WORLD Wellington City

Open 7 days 7am - 11pm

279 Wakefield Street

Ph 04 384 8054

[www.newworld.co.nz/wellingtoncity](http://www.newworld.co.nz/wellingtoncity)