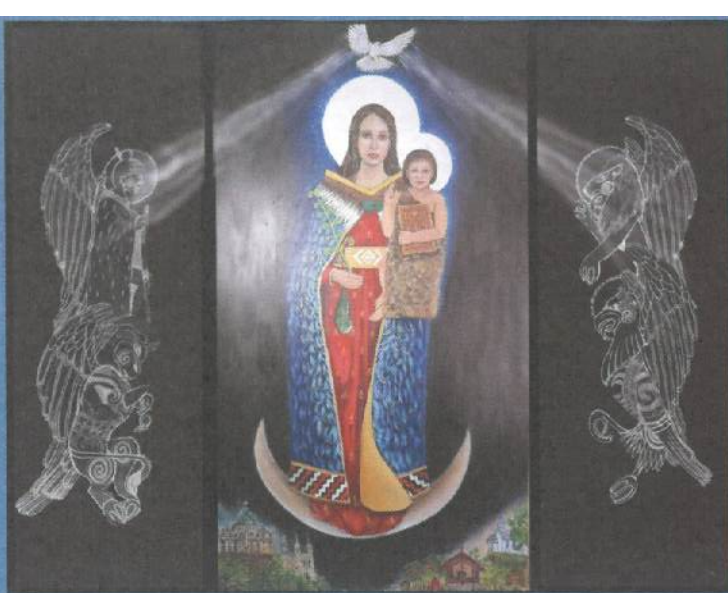


The Angelus

St Mary of the Angels Parish
The National Shrine of New Zealand
Mary, Mother of God, Assumed into Heaven
www.smoa.org.nz

St Mary of the Angels Church
17 Boulcott St, Wellington Central (04) 473 8074

St Joseph's Church
154 Brougham St, Mt Victoria, Wellington (04) 385 0915



Ko Hāua Maria, te Mātua Wāhine o te Atua - Holy Mary, Mother of God

18 February 2024, 1st Sunday of Lent

Parish Priest

Fr Kevin Mowbray SM
parish.priest@smao.org.nz

Assistant Priests

Fr Joe Savei SM
dennys4life@hotmail.com

Fr Michael Young SM
mlyoungsm@gmail.com

Pastoral Worker

Sr Frances Gibbs CSB

Youth Minister

youth.minister@smao.org.nz; 04 282 1746

Director of Music

William McElwee
wmcelweemusic@gmail.com

Parish Accountant

accounts@smao.org.nz

St Mary of the Angels Church Office

office.manager@smao.org.nz; 04 473 8074

St Joseph's Church Office

st.josephs.office@extra.co.nz; 04 385 0915

St Mary of the Angels Church

MASSES

Sunday 7am, 9am, 11am, 5pm
Mon-Fri 7.30am, 12.05pm, 5.15pm
Saturday 11am

Mass of Anointing- 4th Saturday of the month

ADORATION

Mon-Fri 6.30am - 7.20am
Friday 11am - Noon

RECONCILIATION

Mon-Thurs 11.30am - Noon
12.30pm - 1pm
4.30pm - 5pm

Friday 11am - 11.50am
12.30pm - 1pm
4.30pm - 5pm

Saturday 10.30am - 10.55am
4pm - 5pm

St Joseph's Church

MASSES

Sunday 9.30am
Tuesday 8.30am

BAPTISMS

St Mary of the Angels Church

Baptisms; 2pm on 2nd and 4th Sundays each month

St Joseph's Church

Baptisms on 3rd Sunday of each month.
Please arrange through Parish Office.

Here we are, the 1st Sunday of Lent. It seems no time since Christmas and the holidays.

Lent is a wonderful season of grace for us if we give ourselves to it. These days of Lent are an opportunity to prepare our hearts. We need to prepare by realizing how much we want to grow in freedom, how much we need to lighten our spirits and experience some real joy. Some parts of our lives really need changing. In other words, it is a time of what we call spring cleaning and being prepared to make the necessary changes.

Last Wednesday we started the Lenten season, reminding us of two realities (a) Remember thou art dust and dust you will return. (b) Repent, and believe in the Gospel.

We need to be reminded that everything in life passes away except our love and relationship with God. The ashes we received came from dried up palm leaves which were blessed on Palm Sunday last year. They were once lush and verdant palm leaves, but they now are nothing but ashes - a graphic reminder of where we all end up. Nothing human and material in us remains; we all return to dust.

Our Gospel today is from Mark. The desert marks the beginning of Jesus' battle with Satan: the ultimate test will be in Jesus' final hours on the cross. In a similar way, our Lenten observances are only a beginning, a preparation for and a reinforcement of our on going struggle to resist temptations we face in our lives. During Lent, we are led by the Holy Spirit to remember the vows of Baptism when we promised to reject sin and follow Jesus. Just as Jesus was ministered to by the angels, God also supports us in our struggle against sin and temptation. We succeed because Jesus conquered sin once and for all in His saving death on the cross.

Lent is an opportunity for repair work in a specific area of our life that needs a lift and some remodelling. Lent is a time for this. Nobody is exempt. We all need repair work; we all need renewal. Let us take the challenge posed to us by this season of Lent. Let us not waste this season of grace. Let us heed what the psalm suggests. "If today you hear His voice, harden not your hearts".

Sister Frances Gibbs—Pastoral Worker

This Week's Readings

First Reading **Genesis** **9:8-15**
I will recall the covenant between myself and you...the waters shall never again become a flood to destroy all flesh.

Second Reading **1 Peter** **3:18-22**
The water of the flood is a type of the baptism which saves you now.

Gospel **Mark** **1:12-15**
He was tempted by Satan, and the angels looked after him.

Next Week's Readings

First Reading: **Genesis** **22:1-2, 9-13, 15-18**
Psalm: **115**
Second Reading: **Romans** **8:31-34**
Gospel: **Mark** **9:2-10**



Last Sunday's Collection

Sunday Collection: \$4,011
Automatic Payments: \$2,994
Total: \$7,005

Upcoming Feasts

22 February—The Chair of St Peter, apostle

Children's Day - 3 March

To celebrate Children's Day, the 9.30am Mass at St Joseph's on 3 March will be child friendly. We hope to see lots of children there.

Thought for the Week

Never mind whom you praise
but be very careful who you blame.

Responsorial Psalm 24

R. Your ways, O Lord, are love and truth to those who keep your covenant.

Lord, make me know your ways.

Lord, teach me your paths.

Make me walk in your truth, and teach me:
for you are God my saviour. **R.**

Remember your mercy, Lord,
and the love you have shown from of old.

In your love remember me,
because of your goodness, O Lord. **R.**

The Lord is good and upright.

He shows the path to those who stray,
he guides the humble in the right path;
he teaches his way to the poor. **R.**



Uni-versae vi-ae Domi-ni-mi-se-ri-cordi-ae et ve-ri-tas-

All the ways of the Lord are mercy and truth.

Envelope Planned Givers

With the end of the financial year coming up and cash being less readily available, now is the best time to switch to bank transfer if you are currently giving by planned giving envelopes. If you wish to know more or make the switch to bank transfer/automatic payment. Please contact Abby in the Parish Office to help set you up.

Sunday Mass Parking

If you are interested in obtaining a carpark for Sunday Mass, please contact the Parish office for more information.

Mass has been offered for:

Recently Deceased: Gerald Hensley, Lydia Baltazar, Samara Jamed, Angela Y Jung

Anniversaries: Fr Ken Scully sm, Rt Hon sir Ian McKay, Imelda Reeve, Thomas Duignan, Richard Bruynel, Marivac Del Rosario

Prayers for the Sick: Noreen Kirwan, Dianne Sweet, Losalia Leo, John Mora, Kerry Barber, Pam Finlayson, Francisca Sparnaay, Pat Mahony, Kay De Bernardo, Saturino Vilorio, Jim Meachen, Tony Mackle, Dr Bill Glass, Tracey Wernicki, Philippa Fagg, Phillip Hickey, Stephen George, Archbishop Novatus Rugambwa, Joan Wolland



Please remember these and any others in the Parish who are ill. If you know of anyone confined to their home or who needs a visit with Holy Communion, please contact Sister Frances at the parish office.

L.T.
McGuinness
LIMITED
BUILDING CONTRACTORS

9 Francis Place,
PO Box 9639, Wellington
Phone (04) 384 8455
Email: ltm@mcguinness.co.nz

Councillor
Nicola Young
representing Lambton ward

*Please contact me if I can help
with a City Council issue*

021 654 844
Nicola.Young@wcc.govt.nz

DEVINE LAW
LIMITED

For your legal requirements
legal knowledge, human wisdom
Phone Fintan Devine on (04) 495 3747
Email fintan@devinelaw.co.nz
www.devinelaw.co.nz

PPC Priorities for 2024

Thank you to all those who gathered last Saturday for an afternoon of "prayer, reflection, and planning as we consider our Parish priorities for the year ahead".

We had already established that our Parish finances, the buildings surrounding St Joseph's church and the promotion of St Mary of the Angels as the National Shrine, are key priorities which must be attended to, so these topics were not discussed in any depth on Saturday. Instead, our reflection time led us into a round of discussion to discern what activities are to be given priority from the Parish Pastoral Council (PPC) this year. It was great to see, amidst the lively conversation, some key themes emerge and these are to be picked up at the next PPC meeting later this month, for development. In the meantime, thank you to all who were able to participate in person, and in prayer.

Suzanne O'Rourke

Chair, Parish Pastoral Council (PPC)

Genesis to Jesus Bible Study

The Symbolon Team bring you the 'Genesis to Jesus' bible study - a series designed to help ordinary Catholics grow in their knowledge of the Scriptures while deepening their understanding of the riches of our faith. 12 sessions in all, held every second Tuesday starting on the 27th Feb 6-7pm in the St Mary of the Angels' Parish Hall. Koha appreciated, supper provided.

Community gathering to celebrate St Joseph (and St Patrick!) - 17 March

As St Joseph's Feast Day falls on a Tuesday this year, we'll have a community gathering after 9.30am Mass at St Joseph's on 17 March instead to celebrate this. We'll gather in the garden for prayer and then enjoy a BBQ brunch. Please bring a plate to share - a salad or something for dessert.

St Vincent de Paul

A sincere thank you to those who have continued donating supplies into the St Vincent de Paul food basket or given money by means of the Poor Box or the QR code at the rear of the church. If you would like to help those in need through personal contact, why not join our Vinnies group centered at St Mary of the Angels. The next meeting is on Tuesday February 20 in the Mahony Room of the Presbytery at 6pm. Together we can put our faith into action.

St Mary of the Angels

Parish Donations

To make a donation to St Mary of the Angels Parish please scan the QR code and follow the link to our website.



Columban Calendars

Columban Calendars are available to purchase from the Parish Office during the week or at Sunday Masses for \$12.

Lenten Reflection Programme

"The Time is Now"

A reflection group using the Caritas material will be held each week during Lent beginning on Monday 12 Feb at 7pm at St Josephs Church Mt Vic. All are very welcome. You can also work through the reflections which are based on the Sunday Gospels in Lent at home. Go to <https://www.caritas.org/parishes> and look up Lent. Contact John Feeney ph 04 386 4956 for more details.

The Time is Now! Ko tenei tonu te Wā!

The time is now to empower vulnerable families to thrive. Lenten Giving Envelopes for the Bishops' Lent Appeal 2024 have been distributed today at Mass. This year, we are using a single giving envelope. By reducing costs, we ensure more of your donations go to those in need. You can give once or weekly, as is your preference. You may either return your donation envelopes during the parish offertory collection or send them to Caritas directly using the freepost option with the envelope. NZ Post specifies that cash must not be sent through the post. Donations received by Caritas in these envelopes by 31 March 2024 will be sent receipts for the 2023/2024 tax year. Donations received by Caritas after April 1st will be sent receipts for the 2024/2025 tax year. Thank you for your generous support.

Youth Mass

Please join us at 5pm on the last Sunday of the month, Sunday 25 February to get together for Mass and a meal afterwards! If you would like to serve at Mass, please get in touch via the SMAYAC's Facebook page— www.facebook.com/smayacs1. See you there and God bless!



ST MARY OF THE ANGELS PARISH ONGOING MAINTENANCE APPEAL

I would like to help preserve St Mary of the Angels and St Joseph's Churches.

Name:

Address:

Email:

Tel:

My contribution will be made by:

Direct Credit

Cheque

Cash

PLEASE SPECIFY AMOUNT

\$

Donations can be sent to:

Ongoing Maintenance Fund

St Mary of the Angels Parish

17 Boulcott St, Wellington 6011

Bank Account Details:

SMOA - Parish Account

02-0536-0003242-24

BNZ, Lambton Quay, Wellington

St Mary of the Angels is registered with the Charities Commission. All donations are tax deductible and a receipt issued.

2024 Bible Diaries

The Bible Diary can be your most treasured companion as you go through this year. Each day features the scripture readings and an inspirational reflection that can set the tone for your own personal conversations with God. Fundraising for the Mission in India the diaries are available to purchase from the Parish Office for \$20 (or contact Sister Frances).



EWaste Collection

Saturday 24 February, 9am – 2pm at St Catherine's College, Upper Bourke St, Kilbirnie. Small cash fee per item. 027-245-8859.

40 Days for Life

Prayer and Fasting to end abortion, will take place again in Wellington, February 14th - March 24th. For further information, please phone Maria Hammond 0273547367.

Te Kupenga – Catholic Theological College

If you want to serve in the parish community, become a catechist, Christian or youth leader, or want to deepen your understanding of the Catholic faith, come and register at Te Kupenga – Catholic Theological College. We offer programmes that will help you build intellectual faith as you build faith communities. For more information, please visit our website at www.ctc.ac.nz, email us at office@ctc.ac.nz or call (04) 8198380. Scholarships and online options available."

SMOA Church App

If you haven't already downloaded our new Parish App onto your smart phone, please do! On the app, you'll be able to view the newsletters, Mass times, upcoming events and more. You will also have the option to receive alert notifications, particularly if you are a part of a Parish group or ministry. To download the app, follow the steps below:

1. Go to your App Store or Google Play Store and search "ChurchAppsNZ"
2. Download the app, and then select St Mary of the Angels as a Parish
3. The app will then prompt you to select which "alert groups" you want to be a part of. Select as many or as few of these groups as you like. You will be able to change this later if you need to.

If you need any help setting this up, please do not hesitate to contact Abby at the parish office.



Rachel's Vineyard Retreats New Zealand

"Healing the pain of abortion, one weekend at a time..."

Confidential and sensitive support for anyone whose life has been touched by abortion.

info@rachelvineyard.org.nz

027 254 9222

www.rachelvineyard.org.nz

"Wipe the tears from your eyes....there is hope for your future." Jer31

Mahony Horner Lawyers



Know where you stand

www.mhlaw.co.nz

Everard & Antonella Aspell

for all your Real Estate Requirements

Everard Aspell
0274 445 248
everard.aspell@raywhite.com

Antonella Aspell
0274 453 088
antonella.aspell@raywhite.com

RayWhite

Licensed under REAA 2008

Harbour City
FUNERAL HOME



Serving the Archdiocese of Wellington for 34 years.

Wellington

56 Onepu Road, Kilbirnie

Phone: 387 8301

harbourcityfunerals.co.nz



A LEGACY OF FAITH



Remembering St Mary of the Angels or St Joseph's in your will provides an ideal opportunity to make a statement of your faith and to give resources that will support your Church for years to come.

Please contact the Parish Office for further details.

Phone (04) 473 8074.



NEW WORLD
Wellington City

Open 7 days 7am - 11pm

279 Wakefield Street

Ph 04 384 8054

www.newworld.co.nz/wellingtoncity