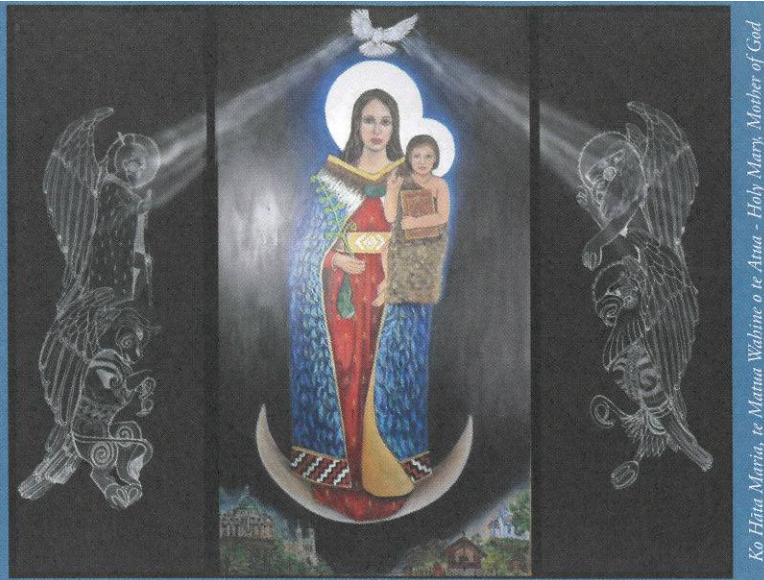


# The Angelus

St Mary of the Angels Parish  
The National Shrine of New Zealand  
Mary, Mother of God, Assumed into Heaven  
[www.smoa.org.nz](http://www.smoa.org.nz)

St Mary of the Angels Church  
17 Boulcott St, Wellington Central (04) 473 8074

St Joseph's Church  
154 Brougham St, Mt Victoria, Wellington (04) 385 0915



Ko Hāua Maria, te Matua Wāhine o te Atua - Holy Mary, Mother of God

## Parish Priest

Fr Kevin Mowbray SM  
[parish.priest@smoa.org.nz](mailto:parish.priest@smoa.org.nz)

## Assistant Priests

Fr Joe Saveli SM  
[dennys4life@hotmail.com](mailto:dennys4life@hotmail.com)  
Fr Hayden Powick SM  
[haydenpowick@hotmail.com](mailto:haydenpowick@hotmail.com)  
Fr Frank Bird SM  
[francisbird@gmail.com](mailto:francisbird@gmail.com)

## Pastoral Worker

Sr Frances Gibbs CBS

## Youth Minister

[youth.minister@smoa.org.nz](mailto:youth.minister@smoa.org.nz); 04 282 1746

## Director of Music

William McElwee  
[wmcelweemusic@gmail.com](mailto:wmcelweemusic@gmail.com)

## Parish Accountant

[accounts@smoa.org.nz](mailto:accounts@smoa.org.nz)

## St Mary of the Angels Church Office

[office.manager@smoa.org.nz](mailto:office.manager@smoa.org.nz); 04 473 8074

## St Joseph's Church Office

[st.josephs.office@extra.co.nz](mailto:st.josephs.office@extra.co.nz); 04 385 0915

## St Mary of the Angels Church

### MASSES

Sunday 7am, 9am, 11am, 5pm  
Mon-Fri 7.30am, 12.05pm, 5.15pm  
Saturday 11am

### ADORATION

Mon-Fri 6.30am - 7.20am  
Friday 11am - Noon, 5.45pm - 6.30pm

### RECONCILIATION

Mon-Thurs 11.30am - Noon  
12.30pm - 1pm  
4.30pm - 5pm  
Friday 11am - 11.50pm  
12.30pm - 1pm  
4.30pm - 5pm  
Saturday 10.30am - 10.55am  
4pm - 5pm

## St Joseph's Church

### MASSES

Sunday 9.30am  
Tuesday 8.30am

### BAPTISMS

## St Mary of the Angels Church

Baptisms; 2pm on 2nd and 4th Sundays each month

## St Joseph's Church

Baptisms on 3rd Sunday of each month.  
Please arrange through Parish Office.

## 23 October 2022, 30th Sunday in Ordinary Time

### Thank You!

On 29 May 2022 the newly strengthened and renovated parish offices, hall and facilities were blessed and opened. It marked the end of many months of hard work by those groups directly involved in the project – the fund-raising committee, the architects, professional consultants and the construction company L.T. McGuinness. All were thanked at the blessing and opening ceremony.

We now have a parish hall and offices that not only meet all safety standards but also provide us with very inviting and efficient internal spaces, complemented by a newly planted and attractive garden setting. Our parish hall, with its light and airy feeling, is already proving to be a very popular and sought-after venue in the heart of the city.

Now that the last invoices have been settled it is time to publish the final accounting for the project. The financial statement of funding and expenditure in this newsletter reveals that only a small deficit remains. This will be covered by parish funds. The 'Donation Statistics' at the bottom of the financial statement indicate the number of donors who gave amounts within a certain range.

Thank you all for what you contributed whether large or small. Every dollar given reflects the generosity and commitment of each donor to St Mary of the Angels. I am delighted and thankful at this outstanding result which is nothing short of amazing! I am very proud of the way you all supported this project. I hope you too are very proud of your achievement.

Thank you one and all!

Fr Kevin Mowbray sm  
Parish Priest

### Quiz Night

Come and join our Young Adults Group from St Mary of the Angels Parish for an evening of quiz, fun and fellowship. Help us raise some much needed funds to make our meeting space more inviting with soft furnishings and furniture.

Tickets will be available after every mass today for \$20, refreshments are included! Tickets will then be available during the week from the Parish Office. Please phone 04 473 8074 to check ticket availability.



### This Week's Readings


**First Reading:** Sirach 35:12-14, 16-19  
*The prayer of the humble will penetrate the heavens.*

**Second Reading:** 2 Timothy 4:6-8, 16-18  
*All that remains is the crown of righteousness reserved for me.*

**Gospel:** Luke 18:9-14  
*The publican returned to his home justified; the pharisee did not.*

### Next Week's Readings

**First Reading:** Wisdom 11:22-12:2  
**Psalm:** 144  
**Second Reading:** 2 Thessalonians 1:11-2:2  
**Gospel:** Luke 19:1-10



### Last Sunday's Collection

Sunday Collection:	\$2,638
Automatic Payments:	\$3,051
<b>Total: \$5,690</b>	

### Social Justice Group

The next meeting of our group will be Wednesday 2nd November at 6pm at St Joseph's church. All welcome. Ph John Feeney 04 386 4956 for more details.

### Youth Mass

Please join us at 5pm on the last Sunday of the month, Sunday 30 October to get together for Mass and a meal afterwards at Capital Market! If you would like to serve at Mass, please get in touch via the SMAYAC's Facebook page— [www.facebook.com/smayacs1](http://www.facebook.com/smayacs1). See you there and God bless!

### Thought for the Week

You will know that forgiveness has begun when  
 you recall those who hurt you and feel the  
 power to wish them well

### Mass has been offered for:

**Recently Deceased:** Paul 'Budgie' Jacobsen, Lalelei Feleti Setefano, Judith Mendoza

**Anniversaries:** Desmond Ashe, Keegan Lawrence, Margo McAuley

**Prayers for the Sick:** Henry Prendergast, Denis O'Neill, Noreen Kirwan, Geoff and Dianne Sweet, Losalia Leo, John Mora, Kerry Barber, Pam Finlayson, Francisca Sparnaay, Shirley Mahony, Samara Jamed, Bill Carroll, Barbara Jones, Mary Buchanan, Joe Haddow, Joan Wolland, William Sia, Kay De Barnardo, Edwin Ligeralde



*Please remember these and any others in the Parish who are ill. If you know of anyone confined to their home or who needs a visit with Holy Communion, please contact Sister Frances at the parish office.*

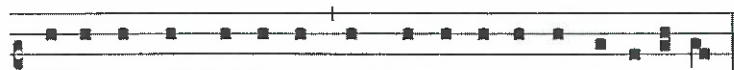
### Responsorial Psalm 33

**R. The Lord hears the cry of the poor. .**

I will bless the Lord at all times,  
 his praise always on my lips;  
 in the Lord my soul shall make its boast.  
 The humble shall hear and be glad. **R.**

The Lord turns his face against the wicked  
 to destroy their remembrance from the earth.  
 The just call and the Lord hears  
 and rescues them in all their distress. **R.**

The Lord is close to the broken-hearted;  
 those whose spirit is crushed he will save.  
 The Lord ransoms the souls of his servants.  
 Those who hide in him shall not be condemned. **R.**



Iste pauper clama-vit, et Domi-nus ex-audi-vit e-um.

*The poor man called, and the Lord heard him.*

### Guardians Needed

Each day our church is looked after by Guardians who take it in turn to spend an hour in the church ensuring that the many visitors feel welcome and that they respect our sacred place. If you would like to consider being a part of this important service to the parish community please contact the parish office.

### Electronic Waste Collection

On Saturday 29 October (Rain postponement Saturday 5 November) at St Mary's College (Netball Courts) from 9am – 2pm. No whiteware or car batteries. Cost per item from \$2 - 10. Cash only. Please see Church noticeboard for pricing.



**LT McGuinness**  
 BUILDING CONTRACTORS LIMITED

9 Francis Place,  
 PO Box 9639, Wellington  
 Phone (04) 384 8455 Fax (04) 801 8455  
 Email: [ltm@mcguinness.co.nz](mailto:ltm@mcguinness.co.nz)

**Councillor**  
**Nicola Young**  
 representing Lambton ward

*Please contact me if I can help  
 with a City Council issue*

**021 654 844**  
[Nicola.Young@wcc.govt.nz](mailto:Nicola.Young@wcc.govt.nz)

**DEVINE LAW**  
 LIMITED

For your legal requirements  
 legal knowledge, human wisdom  
 Phone **Fintan Devine** on (04) 495 3747  
 Email [fintan@devinelaw.co.nz](mailto:fintan@devinelaw.co.nz)  
[www.devinelaw.co.nz](http://www.devinelaw.co.nz)

## Labour Day

On Labour Day, Monday 24 October there will be just one Mass held at 9am in St Mary of the Angels Church.

## Urban Café

Urban is located at 2 Manners Street, just over the road from St Mary of the Angels Church. Urban has a variety of beautiful food for breakfast and lunch—at a great price! Head on over and support our local small business.

## New Parishioners

If you are new to the parish, not yet enrolled as a parishioner, or would like to start giving regularly to the parish through our planned giving program, please fill out one of our new parishioner forms available on our website—[www.smoa.org.nz/about/#new](http://www.smoa.org.nz/about/#new).

## LAST DAYS Before Joshua Men's 1-day Retreat!

Brendan Malone from Rangiora on "Peace, hope and healing through Jesus for our brokenness". Held on Saturday 29 October at the Home of Compassion, 2 Rhine Street, Island Bay from 8.30am to 5pm. Lunch; morning and afternoon tea provided with Koha taken up to defray costs. If you want more info please contact Steve on 027 356 9555 or [Joshua.wgtn@gmail.com](mailto:Joshua.wgtn@gmail.com)

## Holy Hour

You are invited to come to a Holy Hour on Tuesday 25 October at the Connolly Hall Chapel beginning at 7.30 pm to pray for vocations to the priesthood and consecrated life. Included in the hour will be prayers, praise and worship, scripture reading and silence, concluding with Benediction. All are welcome.

## Refugees and Migrants Presentation.

Held at 7 pm on Tuesday 8 November at St Joseph's Church, Mt Victoria. Come and hear a talk by Fr Frank Bird about his work among Burmese Migrants—Refugees on the Thailand Burma Border at the Marist Mission in Ranong. Jules Hickey who has been the New Zealand representative on the Council of the International Catholic Migration Commission (ICMC) will talk about the global context for refugees and migrants, current issues, and what it means for us in New Zealand. (SMOA Social Justice Group)

## Mission Sunday

Today is Mission Sunday. Every baptised person is a missionary. Mission Sunday is a day to celebrate our being missionaries during the Mass. It is also the time to share our financial gift to help the work of the Church in many mission territories all over the world. Give from your heart. Your gift is your legacy to missions. Donate online: <https://missio.nz/donate>

## Faith Rosaries

We sell rosaries in the Parish Office designed and hand made by Ngaire Greger from Faith Rosaries. If you are looking for a rosary as a gift or for yourself, please contact the Parish Office to arrange a time to come in.

## Healing Service

There will be a Healing Service conducted by Fr John Rea in St Teresa's Church on Thursday 27 October beginning at 7.30 pm. Included in the service will be a few praise and worship hymns, a couple of Scripture readings, a few testimonies of healing, a talk by Fr John Rea and an opportunity to receive prayer with Fr John and/or a prayer team. Come with expectant faith. Bring with you someone you know who needs healing. Jesus still heals today.

## Projector Operators Needed

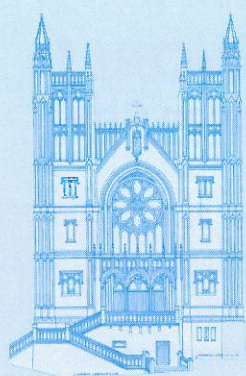
We are in need of volunteers to operate the laptop 5pm Sunday Mass at St Mary of the Angels. Full training will be provided. If you are available please contact Abby in the Parish Office on 04 473 8074 or [office.manager@smoa.org.nz](mailto:office.manager@smoa.org.nz)

## Accommodation Needed

Our lovely family of 3 young adult siblings (aged 16, 18, and 23) are looking for a 2 or 3 bedroom flat to rent. They are all at school or studying English. Originally from Ethiopia. Excellent reference from Fr Kevin. Please call John Kennedy-Good 027 246 0885 or Amanda Calder 027 443 2391 (Refugee Family Reunification Trust).

## Sacrament of Confirmation Parent Session

The second parent session will be held at 7pm on Tuesday 27 October in St Thomas More Church, 36 Worcester Street, Wilton, Wellington 6012.



## ST MARY OF THE ANGELS PARISH ONGOING MAINTENANCE APPEAL

I would like to help preserve St Mary of the Angels and St Joseph's Churches.

Name:

Address:

Email:

Tel:

My contribution will be made by:

☐ Direct Credit

☐ Cheque

☐ Cash

PLEASE SPECIFY AMOUNT

\$

Donations can be sent to:

Ongoing Maintenance Fund

St Mary of the Angels Parish

17 Boulcott St, Wellington 6011

Bank Account Details:

SMOA - Parish Account

02-0536-0003242-24

BNZ, Lambton Quay, Wellington

St Mary of the Angels is registered with the Charities Commission. All donations are tax deductible and a receipt issued.



### Marist Messenger

A monthly magazine of Catholic Spirituality in the Marist Tradition. Available for purchase at the back of the church. Subscription: \$60 a year 11 monthly issues posted to your letterbox. Catholic Spirituality, Daily Scripture Reflections Visit [www.maristmessenger.co.nz](http://www.maristmessenger.co.nz), email [secretary@maristmessenger.co.nz](mailto:secretary@maristmessenger.co.nz) or phone 04 499 6546.



### SMAYAC's Hiking Trip

We are running hiking trip from 11-13 November! Limited to 20 people maximum, first in, first served. Please email [smayacs@gmail.com](mailto:smayacs@gmail.com) to find out more information and to register!! Get your hiking boots on and see you there. Visit our Facebook page—[www.facebook.com/smayacs1](http://www.facebook.com/smayacs1)

### Wellington Heritage Week at Futuna Chapel

Trust Chair, co-editor with Gregory O'Brien of the 2016 book "Futuna – Life of a Building" and our Parish Centre Architect, Nick Bevin, will conduct a detailed and personal tour of Futuna Chapel telling the story of Futuna. This story starts in France in 1816 and has been added to significantly over the intervening 206 years. Come and experience the Life of Futuna. Held on Sunday 30 October at 11:30am and Saturday 5 November at 11:30am. Tour is 30 minutes and koha is appreciated. Futuna Chapel, 67 Futuna Close, Karori, Wellington. Please visit [www.futunatrust.org.nz](http://www.futunatrust.org.nz) for more heritage week events held at Futuna Chapel.

### SMOA Church App

If you haven't already downloaded our new Parish App onto your smart phone, please do! On the app, you'll be able to view the newsletters, Mass times, upcoming events and more. You will also have the option to receive alert notifications, particularly if you are a part of a Parish group or ministry. To download the app, follow the steps below:

1. Go to your App Store or Google Play Store and search "ChurchAppsNZ"
2. Download the app, and then select St Mary of the Angels as a Parish
3. The app will then prompt you to select which "alert groups" you want to be a part of. Select as many or as few of these groups as you like. You will be able to change this later if you need to.

If you need any help setting this up, please do not hesitate to contact Abby at the parish office.



### Rachel's Vineyard Retreats New Zealand

"Healing the pain of abortion, one weekend at a time..."

Confidential and sensitive support for anyone whose life has been touched by abortion.

"Wipe the tears from your eyes....there is hope for your future." Jer31

[info@rachelsvineyard.org.nz](mailto:info@rachelsvineyard.org.nz)

04 974 8693

[www.rachelsvineyard.org.nz](http://www.rachelsvineyard.org.nz)

## Mahony Horner Lawyers



Know where you stand

[www.mhlaw.co.nz](http://www.mhlaw.co.nz)

### Everard & Antonella Aspell

for all your Real Estate Requirements

Everard Aspell

0274 445 248

[everard.aspell@raywhite.com](mailto:everard.aspell@raywhite.com)

Antonella Aspell

0274 453 088

[antonella.aspell@raywhite.com](mailto:antonella.aspell@raywhite.com)

RayWhite

Licensed under REAA 2008



Locally Owned Funeral Directors  
Caring in our Community

Is dealing with a  
Locally Owned  
Funeral Director  
important to you?

Harbour City  
FUNERAL HOME

Wellington

56 Onepu Road, Kilbirnie

Telephone 04-387-8301

[www.harbourcityfunerals.co.nz](http://www.harbourcityfunerals.co.nz)

## A LEGACY OF FAITH



Remembering St Mary of the Angels or St Joseph's in your will provides an ideal opportunity to make a statement of your faith and to give resources that will support your Church for years to come.

Please contact the Parish Office for further details.

Phone (04) 473 8074.



**NEW WORLD**  
Wellington City

Open 7 days 7am - 11pm

279 Wakefield Street

Ph 04 384 8054

[www.newworld.co.nz/wellingtoncity](http://www.newworld.co.nz/wellingtoncity)

**St Mary of the Angels Parish**  
**Parish Centre Upgrade**  
**Statement of Funding and Expenditure**  
**As at 30/9/2022**

**Funding Received**

Donations

Donations - Identified	\$ 511,583
Donations - Anonymous	\$ 5,044
Donations - Bequests	\$ 148,493
SMOA Trust - Grant	\$ 300,000
	<u>\$ 965,120</u>

Other Sources

Sale of Movie Tickets/Concert/Raffle	\$ 5,275
Interest Earned on Bank Deposits	\$ 2,499
	<u>\$ 7,774</u>

Loans

SMOA Trust - Loan	\$ 300,000
	<u>\$ 300,000</u>

**Total Funds Received**

**\$ 1,272,894**

**Project Expenditure**

Partner/Supplier

L T McGuinness Ltd	\$ 1,061,158
Tennent Brown Architects	\$ 121,788
Clendon Burns & Park Ltd - Design, drawing and monitoring	\$ 33,595
Cor Associates - Boiler, heat, vent design and electrical infrastructure	\$ 10,855
Window Treatment NZ - Blinds	\$ 10,416
Wellington City Council - Consents	\$ 7,674
Scarecrow Landcare Ltd/Harrison Garden World - Planting and labour	\$ 6,080
Total Irrigation - Installation of garden irrigation system	\$ 5,170
Otis Elevator/Engie/Barry Murphy Electrical	\$ 4,245
Holmes Fire & Safety	\$ 4,000
HirePool and Central Plumbing - Portaloo	\$ 3,901
Advance Network - Transfer of phone lines to the crypt	\$ 2,515
Other Expenses - Simply Food, Light House Cuba	\$ 7,809

**Total Project Expenditure**

**\$ 1,279,206**

**Net Deficit**

**-\$ 6,312**

**Donation Statistics**

Donation Amount

Donor Count

Total Amount

\$250,000	1	\$ 250,000
\$30,000	1	\$ 30,000
\$20,000	2	\$ 40,000
\$10,000	5	\$ 50,000
\$5,000 to \$9,999	8	\$ 42,000
\$1,000 to \$4,999	46	\$ 73,482
\$500 to \$999	29	\$ 16,555
\$100 to \$499	41	\$ 8,700
\$1 to \$100	25	\$ 846

**Total**

**158 \$ 511,583**



Tickets: \$20 (Refreshments included)

*Tickets will be available  
after every Sunday Mass*



# Quiz Night

Saturday, 5 November

5.30pm for a 6pm start

St Mary of the Angels Parish Hall

COME AND JOIN OUR YOUNG ADULTS GROUP  
FROM ST MARY OF THE ANGELS PARISH FOR AN  
EVENING OF QUIZ, FUN AND FELLOWSHIP.

HELP US RAISE SOME MUCH NEEDED FUNDS TO  
MAKE OUR MEETING SPACE MORE INVITING  
WITH SOFT FURNISHINGS AND FURNITURE.



04 473 8074 or  
office.manager@smoa.org.nz for more info!