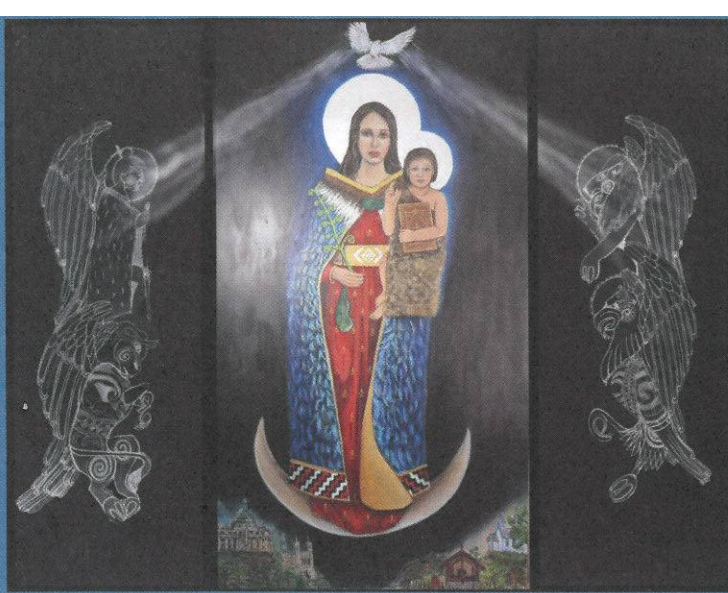


The Angelus

St Mary of the Angels Parish
The National Shrine of New Zealand
Mary, Mother of God, Assumed into Heaven
www.smoa.org.nz

St Mary of the Angels Church
17 Boulcott St, Wellington Central (04) 473 8074

St Joseph's Church
154 Brougham St, Mt Victoria, Wellington (04) 385 0915



Ko Hāia Maria, te Matua Whānue o te Aotua - Holy Mary, Mother of God

Parish Priest

Fr Kevin Mowbray SM
parish.priest@smoa.org.nz

Assistant Priests

Fr Joe Savei SM
dennys4life@hotmail.com
Fr Hayden Powick SM
haydenpowick@hotmail.com

Fr Frank Bird SM
francisbird@gmail.com

Pastoral Worker

Sr Frances Gibbs CSB

Youth Minister

youth.minister@smoa.org.nz; 04 282 1746

Director of Music

William McElwee
wmcelweemusic@gmail.com

Parish Accountant

accounts@smoa.org.nz

St Mary of the Angels Church Office

office.manager@smoa.org.nz; 04 473 8074

St Joseph's Church Office

st.josephs.office@xtra.co.nz; 04 385 0915

St Mary of the Angels Church

MASSES

Sunday 7am, 9am, 11am, 5pm
Mon-Fri 7.30am, 12.05pm, 5.15pm
Saturday 11am

ADORATION

Mon-Fri 6.30am - 7.20am
Friday 11am - Noon, 5.45pm - 6.45pm

RECONCILIATION

Mon-Thurs 11.30am - Noon
12.30pm - 1pm
4.30pm - 5pm

Friday 11am - 11.50pm
12.30pm - 1pm
4.30pm - 5pm

Saturday 10.30am - 10.55am
4pm - 5pm

St Joseph's Church

MASSES

Sunday 9.30am
Tuesday 8.30am

BAPTISMS

St Mary of the Angels Church

Baptisms; 2pm on 2nd and 4th Sundays each month

St Joseph's Church

Baptisms on 3rd Sunday of each month.
Please arrange through Parish Office.

18 September 2022, 25th Sunday in Ordinary Time

My name is Fr. Lauro da Silva Ferreira, I am a Brazilian Marist priest and I have been sent to New Zealand to improve my English and get to know the culture, faith, and Marist spirituality as it is lived here in Aotearoa. I have been asked to talk about my experience so far in New Zealand, especially here at Saint Mary of the Angels Parish (SMOA).

Brazil has a largest number of Catholics in the world, with approximately 110 million men and women who identify themselves as Catholic. Churches in Brazil are still full, although they have few priests to minister to so many Catholics. It is not so difficult to be a Catholic in a country with a predominantly Catholic culture because we are not yet a secularized country, with a strong aversion to faith and religion. In Brazil many Catholics are Catholic by tradition and culture rather than personal religious conviction.

Here in New Zealand I was very impressed by the faith of the Catholics that I have met. It has been very interesting for me to see, despite the difficulties imposed by a secular culture, the subtle and silent force of the affirmation of the faith, as I have witnessed here at SMOA. I see this in the incessant prayer of the Holy Rosary before the Image of the Virgin Mary, in the daily presence of some faithful at Mass; the Church strong in what really matters: faith, commitment and devotion.

This church of SMOA is a gem, for architectural style and above all because of the traces of genuine spirituality that it has. It is an extremely welcoming space, which seems to automatically leads us to prayer. It is an internal space that escapes the exaggeration of the Baroque style, but also escapes the absence of symbols of the "modern temples." There is a charming harmony between its architectural style, appropriate use of sculptures, paintings and beautiful and catechetical stained-glass windows.

Mary is hidden and present in this Church. In many Catholic Churches the image of Mary is at the centre, with the greatest prominence. Here the image is not central but is "hidden" in every corner. There are more than 20 images of Mary in this place. She has a discrete and significant presence here. In the same way, Mary is present in our lives and in our stories, just as she was in the life of Jesus and in the history of the Church. Here we can feel her maternal and loving presence, a refuge that people bring peace and comfort in the midst of a busy capital city.

Fr Lauro da Silva Ferreira sm

This Week's Readings

First Reading: Amos 8:4-7
The Lord God spoke against those who buy the poor for money.

Second Reading: 1 Timothy 2:1-8
Let prayers be offered to God for everyone; he wants all people to be saved.

Gospel: Luke 16: 1-13
You cannot be slaves both of God and of money.

Next Week's Readings

First Reading: Amos 6: , 4-7

Psalm: 145

Second Reading: 1 Timothy 6: 11-16

Gospel: Luke 16:19-31



Last Sunday's Collection

Sunday Collection: \$2,119
Automatic Payments: \$3,073
Total: \$5,192

Joshua Wellington One Day Retreat

Joshua Wellington Men's One-Day Retreat at Home of Compassion, Island Bay on Saturday 29 October 8.30am to 5pm. The theme is on 'Peace, hope and healing through Jesus for our brokenness'. Brendan Malone, Director of LifeNET NZ is retreat leader. If you want to know more ring Steve Ready 027-356-9555 email: joshua.wgtn@gmail.com

Thought for the Week

One can be master of what one does,
but never of what one feels

Responsorial Psalm 112

R. Praise the Lord, who lifts up the poor.

Praise, O servants of the Lord,
praise the name of the Lord!
May the name of the Lord be blessed
both now and for evermore! **R.**

High above all nations is the Lord,
above the heavens his glory.
Who is like the Lord, our God,
who has risen on high to his throne
yet stoops from the heights to look down,
to look down upon heaven and earth? **R.**

From the dust he lifts up the lowly,
from the dungheap he raises the poor
to set him in the company of princes,
yes, with the princes of his people. **R.**



Al-le-lu-ia, al-le-lu-ia.-

Children's Sacramental Programme

Children from St Mary of the Angels including St Joseph's are invited to join the Sacramental Programme to receive the Sacraments of Confirmation, Reconciliation and First Communion. Children can enrol if they are already baptised and are currently in Year 3 or above. The first parents' meeting is at 7pm on Tuesday, 18 October 2022 at St Thomas More Church, Wilton. You can enrol your children by emailing office.manager@smoa.org.nz for the registration form that you will submit along with their baptismal certificate before the programme starts.

Mass has been offered for:

Recently Deceased: Barbara Stairs, Br Dan Connell SM, Fr Brian Cummings, Peter Aldridge, Joy Gaisford, Patricia O'Rourke

Anniversaries: Freda Fernie, Mary Dysart, Fr John Aitken sm, Pepe Va'a, Mary Chinnock, Betty Mary Compton, Mary Frawley, Anthea Walters, Breda Smith

Prayers for the Sick: Denis O'Neill, Noreen Kirwan, Geoff and Dianne Sweet, Losalia Leo, John Mora, Kerry Barber, Pam Finlayson, Francisca Sparnaay, Shirley Mahony, Samara Jamed, Bill Carroll, Barbara Jones, Mary Buchanan, Joe Haddow, Joan Wolland, William Sia, Kay De Barnardo, Bernadette Coup, Margaret Such



Please remember these and any others in the Parish who are ill. If you know of anyone confined to their home or who needs a visit with Holy Communion, please contact Sister Frances at the parish office.

LTG
McGuinness
LIMITED
BUILDING CONTRACTORS
9 Francis Place,
PO Box 9639, Wellington
Phone (04) 384 8455 Fax (04) 801 8455
Email: ltm@mcguinness.co.nz

Councillor
Nicola Young
representing Lambton ward

*Please contact me if I can help
with a City Council issue*

021 654 844
Nicola.Young@wcc.govt.nz

DEVINE LAW
LIMITED

For your legal requirements
legal knowledge, human wisdom
Phone **Fintan Devine** on (04) 495 3747
Email fintan@devinelaw.co.nz
www.devinelaw.co.nz

Pilgrimage to World Youth Day

The Council for Young people is inviting young Catholics (and all other young people) to join a pilgrimage to World Youth Day in Lisbon next year. The Council has published a draft itinerary for Kiwis wanting to attend the Lisbon event. It's a very full itinerary of 24 days leaving Auckland on 15 July for Paris, then on pilgrimage to such places as Lyon and Lourdes, and Fatima for six days, before reaching Lisbon on 31 July. Lisbon will host many official events from 1 August to World Youth Day itself on Sunday 6 August 2023, which climaxes with a Mass that Pope Francis is expected to celebrate in person. Read more and download the itinerary here: <https://www.catholic.org.nz/news/media-releases/wyd-lisbon2023-itinerary/>

St Mary of the Angels Charitable Trust AGM

On Sunday 25 September 2022 the St Mary of the Angels Charitable Trust will hold its Annual General meeting.

The Trust receives donations and bequests to provide a fund for supporting work that needs to be done for the Church and the Presbytery/Parish Hall buildings.

The Trust was a major contributor to the recent strengthening and modernisation work done on the Parish Centre.

The AGM will be held in the Hall immediately after the 11.00am Mass. These AGMs are brief. All Parishioners are most welcome to attend.

The Trust Annual Report and audited financial statements are available on the SMOA website.

Symbolon - Faith Formation Programme for Adults

Join us for our seventh Symbolon session at 6pm in the St Mary of the Angel's Parish Hall on Tuesday 20th September at 6pm. In this session, we will explore: The Holy Spirit & the Life of Grace. You don't need to have gone to the other sessions to come - all are welcome. Each session involves watching a DVD on a certain topic and then having a group discussion based on the content presented in the DVD and finishing off with a shared supper. The sessions are free but koha is strongly encouraged. Please RSVP to Abby, our Parish Manager at office.manager@smoa.org.nz for catering purposes.

RCIA Program

The Rite of Christian Initiation of Adults (RCIA) program will commence again on 20 October for anyone who is interested in joining our Catholic Community. This program runs for around 7 months (October to May) and involves weekly group meetings to learn about and discuss our Catholic Faith. If anyone is interested in joining this program, or would like to support as a leader or sponsor in this program, please make contact with Fr Frank on francisbird@gmail.com or Fr Joe Savei on dennys4life@hotmail.com

Hearts Aflame Catholic Summer School:

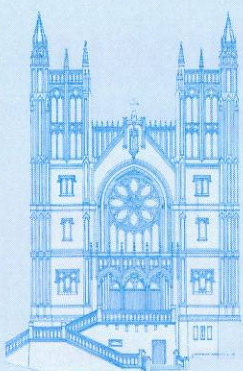
Hearts Aflame Catholic Summer School is back this summer with ten days of world-class lectures, uplifting prayer and authentic community! Hearts Aflame is a life-changing experience for young adults aged 18 to 35 who want to know more about their faith and meet other Catholic young adults from all over New Zealand. Join us this year at Nga Tawa Diocesan School, Marton, from 30 December 2022 until 8 January 2023! You can register at www.heartsaflame.org.nz/registration or find out more at our website or on our social media.

Carparks Available

Carparks in the St Mary of the Angel's Church carpark have become available for rent Monday-Friday. If you are interested, please contact Abby in the Parish Office on 04 473 8074 or email office.manager@smoa.org.nz

Support Palliative Care

NZ Catholics are being urged to support the under-funded hospice and palliative care services by donating, volunteering in hospice shops and asking their members of Parliament and the Government to make palliative care a priority. Bishop of Auckland Steve Lowe, Secretary of the NZCBC, says hospices provide a free service to 20,000 palliative care patients and their whānau each year, but have to fundraise almost half the \$176 million cost. Bishop Steve says: "When the public was asked at the 2020 election to support the euthanasia legislation – dubbed the End of Life Choice law – they were led to believe palliative care would be a priority choice. Instead, hospice funding has been virtually capped at a time of high inflation". Full details online here: www.catholic.org.nz/news/media-releases/support-palliative-care/



ST MARY OF THE ANGELS PARISH ONGOING MAINTENANCE APPEAL

I would like to help preserve St Mary of the Angels and St Joseph's Churches.

Name:

Address:

Email: Tel:

My contribution will be made by:

- Direct Credit
 Cheque *PLEASE SPECIFY AMOUNT*
 Cash \$

Donations can be sent to:
Ongoing Maintenance Fund
St Mary of the Angels Parish
17 Boulcott St, Wellington 6011

Bank Account Details:
SMOA - Parish Account
02-0536-0003242-24
BNZ, Lambton Quay, Wellington

St Mary of the Angels is registered with the Charities Commission. All donations are tax deductible and a receipt issued.

Marist Messenger

A monthly magazine of Catholic Spirituality in the Marist Tradition. Available for purchase at the back of the church. Subscription: \$60 a year 11 monthly issues posted to your letterbox. Catholic Spirituality, Daily Scripture Reflections Visit www.maristmessenger.co.nz, email secretary@maristmessenger.co.nz or phone 04 499 6546.



Catholic Social Services Vacancy

Wellington Catholic Social Services is looking for a creative social worker to join our team in developing a practice model for 2022 and beyond. This is an exciting time to join us. Do you have a commitment to Te Tiriti O Waitangi, Mātauranga Maori and Te Ao Maori? Do you understand bi-cultural and multi-cultural environments? Have you (ideally) worked with issues of family harm and protection of children? Are you looking to work more actively at the community level? Are you an active networker who thrives in collaborative models? Do you have a social work degree (ideally) with 1- 2 years' work experience -or are a mature graduate? Yes- - Then let's korero! Sure, there will be the usual processes to follow – but we like to korero kanoahi ki te kanoahi first. Either email reception@wn-catholicsocialservices.org.nz or phone 04 385 8642. Closing date for applications is 3pm, Friday 30 September 2022.

SMOA Church App

If you haven't already downloaded our new Parish App onto your smart phone, please do! On the app, you'll be able to view the newsletters, Mass times, upcoming events and more. You will also have the option to receive alert notifications, particularly if you are a part of a Parish group or ministry. To download the app, follow the steps below:

1. Go to your App Store or Google Play Store and search "ChurchAppsNZ"
2. Download the app, and then select St Mary of the Angels as a Parish
3. The app will then prompt you to select which "alert groups" you want to be a part of. Select as many or as few of these groups as you like. You will be able to change this later if you need to.

If you need any help setting this up, please do not hesitate to contact Abby at the parish office.



Rachel's Vineyard Retreats New Zealand

"Healing the pain of abortion, one weekend at a time..."

Confidential and sensitive support for anyone whose life has been touched by abortion.

"Wipe the tears from your eyes....there is hope for your future." Jer31

info@rachelvineyard.org.nz

04 974 8693

www.rachelvineyard.org.nz

Mahony Horner Lawyers



Know where you stand

www.mhlaw.co.nz

Everard & Antonella Aspell

for all your Real Estate Requirements

Everard Aspell
0274 445 248
everard.aspell@raywhite.com

Antonella Aspell
0274 453 088
antonella.aspell@raywhite.com

RayWhite

Licensed under REAA 2008



Is dealing with a
**Locally Owned
Funeral Director**
important to you?

Harbour City
" FUNERAL HOME "

Wellington

56 Onepu Road, Kilbirnie
Telephone 04-387-8301

www.harbourcityfunerals.co.nz

A LEGACY OF FAITH



Remembering St Mary of the Angels or St Joseph's in your will provides an ideal opportunity to make a statement of your faith and to give resources that will support your Church for years to come.

Please contact the Parish Office for further details.

Phone (04) 473 8074.



NEW WORLD
Wellington City

Open 7 days 7am - 11pm

279 Wakefield Street

Ph 04 384 8054

[www.newworld.co.nz/
wellingtoncity](http://www.newworld.co.nz/wellingtoncity)