

The Angelus

St Mary of the Angels Parish

Including St Joseph's, Mount Victoria

Church and Presbytery:

17 Boulcott Street

Wellington Central

Telephone: (04) 473 8074

Parish website: www.smoa.org.nz

St Mary of the Angels is a diverse community which seeks to praise and thank God in a place of calm and beauty and strives to be Christ alive in Central Wellington

Parish Priest

Fr Kevin Mowbray SM

parish.priest@smoa.org.nz

Assistant Priests

Fr Joe Savesi SM

dennys4life@hotmail.com

Fr Hayden Powick SM

haydenpowick@hotmail.com

Pastoral Worker

Sr Frances Gibbs CSB

Director of Music

William McElwee

wmcelweemusic@gmail.com

Parish Accountant

accounts@smoa.org.nz

St Mary of the Angels Church Office

office.manager@smoa.org.nz

04 473 8074

St Joseph's Church Office

st.josephs.office@xtra.co.nz

04 385 0915

St Mary of the Angels Church

MASSES

Sunday 7am, 9am, 11am, 5pm

Mon-Fri 7.30am, 12.05pm, 5.15pm

Saturday 11am

EACH MONTH

4th Saturday -Anointing Mass- 11am

ADORATION

Mon-Fri 6.30am - 7.20am

Friday 11am - Noon

RECONCILIATION

Mon-Thurs 11.30am - Noon

12.30pm - 1pm

4.30pm - 5pm

Friday 11am - 11.50pm

12.30pm - 1pm

4.30pm - 5pm

Saturday 10.30am - 10.55am

4pm - 5pm

St Joseph's Church

MASSES

Sunday 9am

BAPTISMS

Baptisms will be held only on the 2nd and

4th Sunday's of the month at 2pm. Please

contact the Parish Office if you are

interested.

24 October 2021, 30th Sunday in Ordinary Time

One of the central challenges of the Christian life is the otherness of the Sacred Scriptures. We are assured that the Word of God is 'alive and active, sharper than any double-edged sword,' but the Scriptures can often seem blunt, irrelevant, and dead.

One of the simplest ways to approach the historical texts in the Bible, is to consider them as a remembering of the presence of God in the present.

In the reading from the Prophet Jeremiah this week, we hear an encouraging prophecy given to the Jewish exiles in Babylon. Jeremiah tells of the return from exile. The Lord will gather to Himself the blind and lame. The Lord will comfort them and guide them to 'streams of water.' Jeremiah looks at the current situation in light of the historical precedent of the Jewish exodus from Egypt several thousand years earlier. God was faithful then; he will be faithful now. Jeremiah hopes in God's faithful love because God has already revealed himself as such.

What seems like a confused muddle in isolation becomes part of an intricate tapestry of God's faithful love. In the Gospel from Mark, Jeremiah's prophecy is itself recalled and confirmed. Jesus Christ gathers to himself the blind and lame. Here, the tapestry is shown to have a face.

Do we look at the present situation and find the presence of God? The situation our country finds itself in is certainly another 'exile? We are isolated from those whom we love, impoverished financially and anxious for the future. We trust that the present moment is still part of the same tapestry of God's faithful love. Reading the Sacred Scriptures gives us hope that this is so.

Fr Hayden Powick sm—Assistant Priest

Sunday Masses

We have been given the all clear to go ahead with Sunday Masses by using a registration system provided by the Archdiocese to keep numbers to 100 maximum. Please visit www.wn.catholic.org.nz/mass-registrations/ and complete the form to register for the Mass of your choice. Registrations are open from 9am Wednesday to 12pm Friday. If your preferred Mass is full this system allows you to see other Masses with spaces available in the area. If you do not have access to the Archdiocese website or are having trouble you can call the Parish Office on 04 473 8074 to book.

This Week's Readings

First Reading: Jeremiah 31: 7-9
I shall lead them back in mercy—both the blind and the lame.

Second Reading: Hebrews 5: 1-6
You are a priest for ever, in the line of Melchizedek.

Gospel: Mark 10: 46-52
Master, grant that I may see.

Next Week's Readings

First Reading: Deuteronomy 6: 2-6
Psalm: 17
Second Reading: Hebrews 7: 23-28
Gospel: Mark 12: 28-34



Last Sunday's Collection

Sunday Collection: \$3,328
Automatic Payments: \$2,958
Total: \$6,286

Labour Day Mass

On Monday 25 October, Labour Day, there will be only one Mass held at 9am.

Covid Alert Level 2

While we are at Alert Level 2 ALL Masses and Reconciliation times, except the 5.15pm Weekday Mass, are running as per the normal timetable, with no restrictions to numbers.

The following is still in place:

- ♦ Communion under one kind only, therefore no Precious Blood is to be distributed
- ♦ No physical contact at the Sign of Peace
- ♦ Communion on the hand only

Responsorial Psalm 125

R. The Lord has done great things for us; we are filled with joy.

When the Lord delivered Zion from bondage, it seemed like a dream.

Then was our mouth filled with laughter, on our lips there were songs. **R.**

The heathens themselves said: 'What marvels the Lord worked from them!'

What marvels the Lord has worked for us!

Indeed we were glad. **R.**

Deliver us, O Lord, from our bondage as streams in dry land.

Those who are sowing in tears will sing when they reap. **R.**

They go out, they go out, full of tears, carrying seed for the sowing; they come back, they come back, full of song, Carrying their sheaves. **R.**



Magni-fi-ca-vit Domi-nus fa-ce-re no-bis-cum:



facti sumus laetentes.

*The Lord hath done these things for us:
we are become joyful.*

Church and Parish Office

All Masses and Reconciliation times will now be resumed, expect for the 5.15pm Mass. Please see the front of the Angelus for information on registering for Sunday Masses.

Mass has been offered for:

Recently deceased: Brendan Gilmore, Shan Fonseka, Simon Lai

Anniversaries: Keegan Lawrence, Margo McAuley

Prayers for the Sick: Denis O'Neill, Patricia O'Rourke, Noreen Kirwan, Peter Aldridge, Geoff Sweet, Dianne Sweet, Losalia Leo, John Mora, Kerry Barber, Pam Finlayson, Francisca Sparnaay, Barbara and Vic Stairs, Shirley Mahony, Samara Jamed, Bill Carroll, Barbara Jones, Mary Buchanan, Bill McLaughlin, John Moore



Please remember these and any others in the Parish who are ill. If you know of anyone confined to their home or who needs a visit with Holy Communion, please contact Sister Frances at the parish office.

LT
McGuinness
LIMITED
BUILDING CONTRACTORS

9 Francis Place,

PO Box 9639, Wellington

Phone (04) 384 8455 Fax (04) 801 8455

Email: ltm@mcguinness.co.nz

Councillor

Nicola Young

representing Lambton ward

*Please contact me if I can help
with a City Council issue*

021 654 844

nicola.young@wcc.govt.nz

DEVINE LAW

L I M I T E D

For your legal requirements

legal knowledge, human wisdom

Phone **Fintan Devine** on (04) 495 3747

Email fintan@devinelaw.co.nz

www.devinelaw.co.nz

Little Peckish

After 12 years in the arcade Little Peckish will be closing as our lease ends soon. Our last trading day will be Friday 22 October. Thank you for being such wonderful customers. For many of you this has been 'your place'. We will miss you all

No Weekday Mass at St Joseph's

There will be no Tuesday Mass at St Joseph's for the month of October.

Congratulations

We congratulate Petula McPhee and Jason Malquet who celebrated their Marriage in St Mary of the Angels Church yesterday.

St Mary of the Angels Carpark

The carpark at St Mary of the Angels is now closed to Parishioners from Monday to Friday. The Church carpark will be available to Parishioners during the day on Saturdays and Sundays.

Holy Hour

You are invited to come to a Holy Hour on Tuesday 26 October at the Connolly Hall Chapel beginning at 7.30 pm to pray for vocations to the priesthood and consecrated life. Included in the hour will be recorded hymns, prayers, scripture reading and silence, concluding with Benediction. All are welcome.

Divine Mercy Prayer Meeting

Held by Zoom on Sundays at 3pm.
Meeting ID: 799 6918 9260
Passcode: hra2h3

Food for Faith

Fr John O'Connor from the National Liturgy Office has set up a website that includes daily reflections, prayer requests, podcasts and much more. Please visit www.foodforfaith.org.nz

E-Waste Collection

On Saturday 30 October (Rain postponement Saturday 6 November) at St Catherine's College, Upper Bourke St, Kilbirnie 9am - 2pm. No white ware or car batteries. Cost per item from \$2 - 10. Cash only. Proceeds to the college.

PRAYER TO ST. JOSEPH

Hail, Guardian of the Redeemer,
Spouse of the Blessed Virgin Mary.
To you God entrusted his only Son;
in you Mary placed her trust;
with you Christ became man.

Blessed Joseph, to us too,
show yourself a father
and guide us in the path of life.
Obtain for us grace, mercy and courage,
and defend us from every evil.

Amen

Sunday Masses Being Livestreamed

The Auckland Diocese prepares Sunday Mass and uploads this to their website the night before at 5.30pm. This is also available on Shine TV at 2.00pm Sunday—Free-to-air TV Channel 25, Sky TV Channel 201.

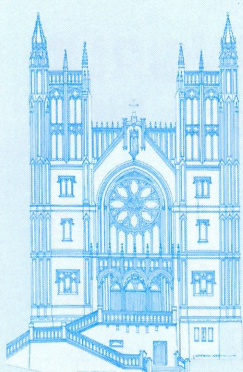
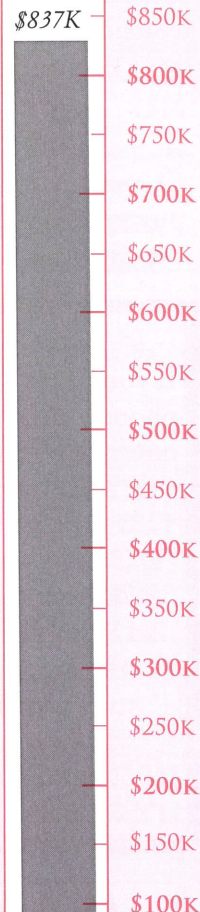
Fr Tony from Our Lady of Grace Church, Heretaunga intends to live-stream each Sunday at 10.30 am until we can gather again at LEVEL 1. The link to these Masses is <https://www.tributes.co.nz/ViewMyTribute.aspx?id=16621>. If you missed the Mass (or any future ones they are available if you chose the link 'LIVESTREAM'

Our Lady of Kapiti are livestreaming Mass on Sunday at 9.30am. This can be accessed by visiting their website at <https://kapiti->

Solemn Vespers for the Feast of All Saints

St Mary of the Angels will celebrate the ancient Feast of All Saints with First Vespers on **Sunday October 31** at 7.30pm in the church. The choir will sing the Latin Gregorian antiphons, psalms, hymn and canticle for the day, with the Magnificat, in a setting by Palestrina. Please join us for this beautiful and solemn liturgy.

PARISH CENTRE APPEAL



ST MARY OF THE ANGELS PARISH CENTRE FUNDRAISING APPEAL

I would like to help preserve the St Mary of the Angels Parish Centre.

Name:

Address:

Email:

Tel:

I would like to make a regular payment of \$ to be paid each month year for 2 years.

I would like to make a one-off payment of:

☐ \$50,000 ☐ \$20,000 ☐ \$10,000 ☐ \$5,000 ☐ \$2,000 ☐ \$1,000 ☐ \$500 ☐ \$200 ☐ Other \$ please specify

Please return your completed slip following your donation to ensure we have your details to issue a receipt.

Bank Account Details:

SMOA - Parish Centre Upgrade
02-0536-0003242-50
BNZ, Lambton Quay, Wellington
Please provide your name and address (or Parish Planned Giving/Envelope number) as reference. All donations are tax deductible and a receipt will be issued.

LifeTeen Wellington

We are LifeTeen Wellington, a youth group based in Newtown. We will be taking a group of young people to our yearly summer camp in January 2022, we will spend camp with other groups all around New Zealand. This year camp is based in Hamilton. If anyone in the community wants to sponsor one or multiple of our teens to get to camp please let me know.

If you are interested in sponsoring us or have any questions, you can get in contact with me on 0223790577 or lifeteenwellington@gmail.com

Columban Calendars

Columban Calendars are available to purchase from the Parish Office during the week for \$12

Hearts Aflame Needs Your Support

Hearts Aflame is a national Catholic event for young adults that has been running for 30 years. At Hearts, people are drawn into a deeper relationship with Christ through the Sacraments, formation, and community. Many participants describe it as life-changing. With the 30th anniversary coming up, the Hearts Aflame Planning Team invites parishioners to support this event. If you would like to make a donation, please visit the website at www.heartsaflame.org.nz/donate. Above all, prayer is always appreciated!

SMOA Church App

If you haven't already downloaded our new Parish App onto your smart phone, please do! On the app, you'll be able to view the newsletters, Mass times, upcoming events and more. You will also have the option to receive alert notifications, particularly if you are a part of a Parish group or ministry. To download the app, follow the steps below:

1. Go to your App Store or Google Play Store and search "ChurchAppsNZ"
2. Download the app, and then select St Mary of the Angels as a Parish
3. The app will then prompt you to select which "alert groups" you want to be a part of. Select as many or as few of these groups as you like. You will be able to change this later if you need to.

If you need any help setting this up, please do not hesitate to contact Abby at the parish office.



Rachel's Vineyard Retreats New Zealand

"Healing the pain of abortion, one weekend at a time..."

Confidential and sensitive support for anyone whose life has been touched by abortion.

info@rachelsvineyard.org.nz

04 974 8693

www.rachelsvineyard.org.nz

"Wipe the tears from your eyes....there is hope for your future." Jer31

Mahony Horner Lawyers



Know where you stand

www.mhlaw.co.nz

BREAKFAST

LUNCH

COFFEE

Dukes Arcade
Ph: 04 499 7769
E: peck.m@xtra.co.nz



Locally Owned Funeral Directors
Caring in our Community

Is dealing with a
Locally Owned
Funeral Director
important to you?

Harbour City
FUNERAL HOME

Wellington

56 Onepu Road, Kilbirnie

Telephone 04-387-8301

www.harbourcityfunerals.co.nz

A LEGACY OF FAITH



Remembering St Mary of the Angels in your will provides an ideal opportunity to make a statement of your faith and to give resources that will support your Church for years to come.

Please contact the Parish Office for further details.

Phone (04) 473 8074.



NEW WORLD
Wellington City

Open 7 days 7am - 11pm

279 Wakefield Street

Ph 04 384 8054

www.newworld.co.nz/wellingtoncity