

# The Angelus

## St Mary of the Angels Parish

### Church and Presbytery:

17 Boulcott Street

Wellington Central

Telephone: (04) 473 8074

Parish website: [www.smoa.org.nz](http://www.smoa.org.nz)

*St Mary of the Angels is a diverse community which seeks to praise and thank God in a place of calm and beauty and strives to be Christ alive in Central Wellington*

### Parish Priest

Fr Kevin Mowbray SM

[smoapp@xtra.co.nz](mailto:smoapp@xtra.co.nz)

### Assistant Priests

Fr Peter McAfee SM

Fr Joe Savesi SM

### Pastoral Worker

Sr Frances Gibbs CSB

### In Residence

Fr Brian Wysocki SM

### Director of Music

William McElwee

[wmcelweemusic@gmail.com](mailto:wmcelweemusic@gmail.com)

### Parish Accountant

[smoamanager@xtra.co.nz](mailto:smoamanager@xtra.co.nz)

### Parish Office

[smoaoffice@xtra.co.nz](mailto:smoaoffice@xtra.co.nz)

—

### MASSES

Sunday 7am, 9am, 11am, 5pm

Mon-Fri 7.30am, 12.05pm, 5.15pm

Saturday 11am

### EACH MONTH

4th Saturday Sacrament of Anointing  
at 11am Mass

### ADORATION

Mon-Fri 6.30am - 7.20am

Friday 11am - Noon

### RECONCILIATION

Mon-Thurs 11.30am - Noon  
12.30pm - 1pm  
4.30pm - 5pm

Friday 11am - 11.50pm  
12.30pm - 1pm  
4.30pm - 5pm

Saturday 10.30am - 10.55am  
4pm - 5pm

## 21 February 2021, 1st Sunday in Lent

Where has the time gone? Here we are in the 1<sup>st</sup> week of Lent. Our theme is The Kingdom of God is at hand. Repent and believe in the Gospel

The season of Lent is the most appropriate time for celebrating the Sacrament of Penance. On Ash Wednesday unfortunately, this year we didn't hear the solemn invitation, *Turn away from sin and believe in the good news*. There are, many opportunities here at SMOA to be reconciled with God and neighbour and that is a wonderful preparation for the Easter Triduum.

Our Gospel Reading for today presents Jesus being led by the Spirit into the desert where he remained for 40 days. That it is not a place where many of us would want to go. The desert is a place where we are confronted with the truth of our poverty and nothingness- a privileged place that challenges us to live in humility and simplicity; a place that detaches us from the things that can be our comfort and security.

The desert can be a place that helps us come to the meaning of life. It is a place where we can more clearly understand the true purpose of wealth, power, God's gifts and talents. It is place for being grateful for what we have, and sharing it with others. Aware of our poverty, we learn to respect, appreciate, and love all people no matter how different they are from us

The desert is also a place where we listen to God, will be loved by Him, know His will and follow it with humility and courage. It is also a time when we know our hearts are drawn to Him, so is the right time to begin or continue our mission.

Like Jesus, we do not always stay in the desert, we need to move on to our calling in life. Again there are times when, like Jesus, we have to return to the desert place to be strengthened and renewed by prayer as He was, so as to serve with love all we are in contact with. Happy Lent. Preparations?

*Sister Frances Gibbs—Pastoral Worker*



## This Week's Readings

**First Reading**      **Genesis**      **9:8-15**  
*I will recall the covenant between myself and you...the waters shall never again become a flood to destroy all flesh.*

**Second Reading**      **1 Peter**      **3:18-22**  
*The water of the flood is a type of the baptism which saves you now.*

**Gospel**      **Mark**      **1:12-15**  
*He was tempted by Satan, and the angels looked after him.*

## Next Week's Readings

**First Reading:**      **Genesis**      **22:1-2, 9-13, 15-18**  
**Psalm:**      **115**  
**Second Reading:**      **Romans**      **8:31-34**  
**Gospel:**      **Mark**      **9:2-10**



## Last Sunday's Collection

Sunday Collection:      \$3,131  
 Automatic Payments:      \$1,920  
**Total: \$5,051**

## Covid Alert Level 1

**While we are at Alert Level 1 ALL Masses and Reconciliation times are running as per the normal timetable, with no restrictions to numbers.**

The following is still in place:

- ♦ Communion under one kind only, therefore no Precious Blood is to be distributed
- ♦ No physical contact at the Sign of Peace
- ♦ Communion on the hand only

*Go to [www.smoa.org.nz/covid19updates](http://www.smoa.org.nz/covid19updates) for more information and for Cardinal John Dew's full announcement.*

## Mass has been offered for:

**Recently deceased:** George Bok, Carol Armstrong, Xavier Reidy

**Anniversaries:** Imelda Reeve, Thomas Duignan, Richard Bruynel, Marivac Del Rosario, Joan Abbott, Cecilia Dickson, Leslie Kriebel, Pauline Ritchie, Donald McIvor, Janis Horan, Fr Barry Edwards, Fr Michael O'Meehan sm, Edward Hunt

**Prayers for the Sick:** Peter Aldridge, John Adams, Geoff Sweet, Dianne Sweet, Losalia Leo, John Foden, John Mora,



Kerry Barber, Pam Finlayson, Paul and Francisca Sparnaay, Brendan Gilmore, Pat Johnson, Barbara and Vic Stairs, Shirley Mahony, Samara Jamed, Bill Carroll, Laurie Butler

*Please remember these and any others in the Parish who are ill. If you know of anyone confined to their home or who needs a visit with Holy Communion, please contact Sister Frances at the parish office.*

## Responsorial Psalm 24

**R. Your ways, O Lord, are love and truth to those who keep your covenant.**

Lord, make me know your ways.

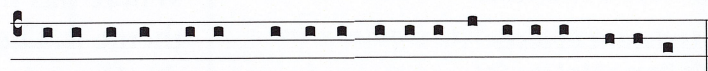
Lord, teach me your paths.

Make me walk in your truth, and teach me:  
 for you are God my saviour. **R.**

Remember your mercy, Lord,  
 and the love you have shown from of old.  
 In your love remember me,  
 because of your goodness, O Lord. **R.**

The Lord is good and upright.

He shows the path to those who stray,  
 he guides the humble in the right path;  
 he teaches his way to the poor. **R.**



Uni-versae vi- ae Domi-ni-mi-se-ri-cordi- a et ve-ri-tas-

*All the ways of the Lord are mercy and truth.*

## Poor Box

Many thanks to those who donate to the Poor Box near the main entrance to the Church. Your offerings support the work of the St Vincent de Paul Society in our parish. Most recently our funds have been used to assist a refugee family with school uniform purchase at the start of the school year.



**L.T.**  
**McGuinness**  
**BUILDING CONTRACTORS**

9 Francis Place,  
 PO Box 9639, Wellington  
 Phone (04) 384 8455 Fax (04) 801 8455  
 Email: ltm@mcguinness.co.nz



*Feeling a little peckish?*

Dukes Arcade • Great food, coffee, service  
 Office catering available  
 Phone 04 499 7769 • Mobile 0274 461 650

**Councillor**  
**Nicola Young**  
 representing Lambton ward

*Please contact me if I can help with a City Council issue*

**021 654 844**  
**[nicola.young@wcc.govt.nz](mailto:nicola.young@wcc.govt.nz)**



## SMOA Church App

If you haven't already downloaded our new Parish App onto your smart phone, please do! On the app, you'll be able to view the newsletters, Mass times, upcoming events and more. You will also have the option to receive alert notifications, particularly if you are a part of a Parish group or ministry. To download the app, follow the steps below:

1. Go to your App Store or Google Play Store and search "ChurchAppsNZ"
2. Download the app, and then select St Mary of the Angels as a Parish
3. The app will then prompt you to select which "alert groups" you want to be a part of. Select as many or as few of these groups as you like. You will be able to change this later if you need to.

If you need any help setting this up, please do not hesitate to contact Alexandra at the parish office.

## Thank You!

We appreciate all those who completed the Sign up sheet for assisting in various Liturgies/Ministries. We have received a positive response to our need for assistance. We are currently processing the responses and over the next few weeks we will be responding to each person who offered their support. Thank you.

## Lenten Reflection



We invite you to join us for a reflection and faith sharing discussion to be held in the St Mary of the Angels crypt on Thursday 25 February starting at 11.15 am. We will reflect on Gospel passages following the theme "A New Way Forward" highlighting God's presence even during the hardships in our lives. The Reflection will finish in time for the 12.05 pm Mass.

## Pa Maria Marist Spirituality Centre

The Programme for 2021 is now available. If you would like an emailed copy, please contact Brian Cummings SM at [bgcummings@xtra.co.nz](mailto:bgcummings@xtra.co.nz)

## Holy Hour

You are invited to come to a Holy Hour on Tuesday 23 February at the Connolly Hall Chapel beginning at 7.30 pm to pray for vocations to the priesthood and consecrated life. Included in the hour will be hymns, prayers, scripture reading and silence, concluding with Benediction. All are welcome.

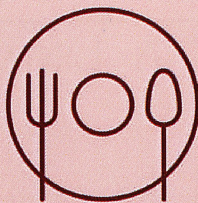
## WellCath - Wellington Group for Catholic Young Adults

If you are a university student or young professional, then come join us for our first event of the year. Dinner and Board Games Evening. 6pm, Friday 26 February at Counter Culture, Te Aro, Wellington. Please RSVP by emailing [wellcathyoungadults@gmail.com](mailto:wellcathyoungadults@gmail.com), texting 0221707585 or by sending us a message on our Facebook page by Sunday 21 February.

MULTICULTURAL  
DINNER  
NIGHT

SATURDAY  
FEBRUARY 27TH

TICKETS AT \$50 EACH  
AVAILABLE AFTER  
MASS OR AT  
PARISH OFFICE 04 4961700



FOR ONLINE  
PAYMENT:  
BANK ACCOUNT  
02-0506-0138488-025  
INCLUDE YOUR  
SURNAME & INITIALS  
REFERENCE:  
"MDINNER"

7PM - 9PM  
ST PATRICK'S COLLEGE HALL  
581 EVANS BAY PARADE  
KILBIRNIE



## 40 Days for Life: Be a Sign of Hope this Lent

February 17- March 28 – Monday to Friday – 8am to 4pm & Saturday 8am to Noon. Please protect mothers and babies through prayer, fasting, and vigil outside the local abortion centre Te Mahoe in Newtown. The vigil works on a rotating roster of one-hour prayer slots with two to three people needed to cover each hour. A positive, peaceful, and fruitful witness to the precious gift of life. You may be her last sign of hope and her first sign of mercy. To find out more and sign up for your prayer hour(s) please visit [fli.org.nz/40daysforlife](http://fli.org.nz/40daysforlife) or contact Clare 021 231 7954 or [clare.fli@xtra.co.nz](mailto:clare.fli@xtra.co.nz)

DEVINE LAW  
LIMITED

For your legal requirements

legal knowledge, human wisdom

Phone Fintan Devine on (04) 495 3747

Email [fintan@devinelaw.co.nz](mailto:fintan@devinelaw.co.nz)

[www.devinelaw.co.nz](http://www.devinelaw.co.nz)

## ST MARY OF THE ANGELS ONGOING MAINTENANCE APPEAL

I would like to help preserve St Mary of the Angels Church

Name:

Address:

Email:

Tel:

My contribution will be made by:

☐ Direct Credit

☐ Cheque

☐ Cash

PLEASE SPECIFY AMOUNT

\$

Donations can be sent to:  
Ongoing Maintenance Fund  
St Mary of the Angels  
17 Boulcott St  
Wellington 6011

Bank Account Details:  
02-0536-0003242-23  
Bank of New Zealand  
Lambton Quay  
Wellington

St Mary of the Angels is registered with the Charities Commission. All donations are tax deductible and a receipt issued.



## New Parishioners

If you are new to the parish, not yet enrolled as a parishioner, or would like to start giving regularly to the parish through our planned giving programme, please fill out one of our new parishioner forms at the back of the church, or our online Google Form at: [www.forms.gle/hV7w341HEaNTkKup7](http://www.forms.gle/hV7w341HEaNTkKup7)

### Greeting Ministry at SMOA

It is always great to be welcomed into Mass by a friendly face! We are seeking more Greeters—volunteers that welcome parishioners and visitors to our church as we gather for Sunday Mass. You will need to arrive 10 minutes before Mass and check that the tables at the church entrances are tidy, and then welcome people as they come in. At the end of Mass the Greeters will do some tidying up for the next Mass. If you are interested in being a regular Greeter please contact the parish office.

### A Test of Faith

The documentary 'A Test of Faith' provides a wonderful insight into the seismic strengthening work that took place at St Mary of the Angels. The documentary also includes the story of the Church in Wellington from 1843 and in particular the three churches that have been built on the present St Mary of the Angels site. DVDs are available to purchase from the parish office for \$30, with all proceeds going towards the ongoing maintenance of the church.

### Rachel's Vineyard Retreats New Zealand

"Healing the pain of abortion, one weekend at a time..."

Confidential and sensitive support for anyone whose life has been touched by abortion.

[info@rachelsvineyard.org.nz](mailto:info@rachelsvineyard.org.nz)

04 974 8693

[www.rachelsvineyard.org.nz](http://www.rachelsvineyard.org.nz)

*"Wipe the tears from your eyes....there is hope for your future." Jer31*

## Mahony Horner Lawyers



Know where you stand

[www.mhlaw.co.nz](http://www.mhlaw.co.nz)

**bfs** brendan foot supersite

**One Dealership. One Contact. 7 Brands.**



Talk to Stephen Mills today.

Phone 587 0005 x750 or 027 575 7512 [stephenm@brendanfoot.co.nz](mailto:stephenm@brendanfoot.co.nz)

Railway Avenue, Lower Hutt | [www.brendanfoot.co.nz](http://www.brendanfoot.co.nz)



Locally Owned Funeral Directors  
Caring in our Community

Is dealing with a  
Locally Owned  
Funeral Director  
important to you?



### Wellington

56 Onepu Road, Kilbirnie

Telephone 04-387-8301

[www.harbourcityfunerals.co.nz](http://www.harbourcityfunerals.co.nz)

## A LEGACY OF FAITH



Remembering St Mary of the Angels in your will provides an ideal opportunity to make a statement of your faith and to give resources that will support your Church for years to come.

Please contact the Parish Office for further details.

Phone (04) 473 8074.



**NEW WORLD**  
Wellington City

Open 7 days 7am - 11pm

279 Wakefield Street

Ph 04 384 8054

[www.newworld.co.nz/wellingtoncity](http://www.newworld.co.nz/wellingtoncity)