

The Angelus

St Mary of the Angels Parish

Church and Presbytery:

17 Boulcott Street

Wellington Central

Telephone: (04) 473 8074

Parish website: www.smoa.org.nz

St Mary of the Angels is a diverse community which seeks to praise and thank God in a place of calm and beauty and strives to be Christ alive in Central Wellington

Parish Priest

Fr Kevin Mowbray SM

smoapp@xtra.co.nz

Assistant Priests

Fr Peter McAfee SM

Fr Joe Savesi SM

Pastoral Worker

Sr Frances Gibbs CSB

In Residence

Fr Brian Wysocki SM

Director of Music

William McElwee

wmcelweemusic@gmail.com

Parish Accountant

smoamanager@xtra.co.nz

Parish Office

smoaoffice@xtra.co.nz

—

MASSES

Sunday 7am, 9am, 11am, 5pm

Mon-Fri 7.30am, 12.05pm, 5.15pm

Saturday 11am

EACH MONTH

4th Saturday Sacrament of Anointing
at 11am Mass

ADORATION

Mon-Fri 6.30am - 7.20am

Friday 11am - Noon

RECONCILIATION

Mon-Thurs 11.30am - Noon

12.30pm - 1pm

4.30pm - 5pm

Friday 11am - 11.50pm

12.30pm - 1pm

4.30pm - 5pm

Saturday 10.30am - 10.55am

4pm - 5pm

7 February 2021, 5th Sunday in Ordinary Time

WHAT CAN YOU DO FOR YOUR PARISH OF ST MARY OF THE ANGELS?

Recently we witnessed some astonishing scenes in Washington just before the inauguration of Senator Joe Biden as president of the United States. The world watched in confusion and amazement as a crowd of angry citizens physically attacked the Capitol, the government buildings at the very heart and centre of American democracy. The reverberations of those scenes still continue as former President Trump is now impeached for a second time. Over sixty years ago another president of the United States, John F. Kennedy, also attracted the attention of the world during the period of his inauguration. But for very different reasons! His inspiring address to all Americans on that day is still remembered and quoted, even beyond America: "Ask not what your country can do for you," he challenged his fellow citizens, "rather, ask what you can do for your country!" Stirring words indeed!

His words have a biblical ring to them – "serve rather than be served". This call is at the very heart of the Gospel. How many times is it possible to see the impact of God's presence and power in the lives of Jesus' disciples; they do not just cherish their friendship, their love for Jesus, as something personal and private. They share it! They share it by going out to others and offering themselves to the poor, the weak, the suffering, the abandoned. Such self-giving can be seen in Mary, for example – straight after the angel's announcement of her pregnancy to her she goes out to Elizabeth to share her 'Good News'. This spirit of self-giving is forever and profoundly symbolized in the cross of Jesus – he died for us.

This month of February we are inviting all our regular parishioners to think about offering themselves in service to this St Mary of the Angels community – to serve rather than be served.

We need more people to be eucharistic ministers, mass readers, altar servers, greeters, choir members (11.00am and 5.00pm), offertory collectors. We need many generous people.

WE NEED YOU!

Please think about it. Approach one of the priests or Sr. Frances for more information, or pick up a form for volunteers at the back of the church. We are planning to have some formation sessions for those who volunteer in the month of March. Hopefully, this will mean that everyone will be ready to serve at our Easter celebrations at the beginning of April.

The challenge I hope is clear: "Ask not what your parish can do for you, rather ask what you can do for your parish"

Fr Kevin Mowbray sm—Parish Priest

This Week's Readings

First Reading Isaiah 58:7-10
Your light will shine like the dawn.

Second Reading 1 Corinthians 2:1-5
I came to you to proclaim Christ crucified.

Gospel Reading Matthew 5:13-16
You are the light of the world.

Next Week's Readings

First Reading Sirach 15:15-20

Psalm 118

Second Reading 1 Corinthians 2:6-10

Gospel Reading Matthew 5:17-37

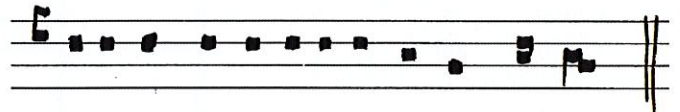
Responsorial Psalm 111

R. A light rises in the darkness for the upright.

He is a light in the darkness for the upright:
he is generous, merciful and just.
The good man takes pity and lends,
he conducts his affairs with honour. **R**

The just man will never waver:
he will be remembered for ever.
He has no fear of evil news;
with a firm heart he trusts in the Lord. **R**

With a steadfast heart he will not fear;
open-handed, he gives to the poor;
his justice stands firm for ever.
His head will be raised in glory. **R**



Exórtum est in ténebris lí-men réc-tis:

To the righteous a light is risen up in darkness.

Last Sunday's Collection

Sunday Collection: \$2,630

Automatic Payments: \$3,343

Total: \$5,973



Covid Alert Level 1

While we are at Alert Level 1 ALL Masses and Reconciliation times are running as per the normal timetable, with no restrictions to numbers.

The following is still in place:

- ◆ Communion under one kind only, therefore no Precious Blood is to be distributed
- ◆ No physical contact at the Sign of Peace
- ◆ Communion on the hand only

Go to www.smoa.org.nz/covid19updates for more information and for Cardinal John Dew's full announcement.

Pa Maria Marist Spirituality Centre

The Programme for 2021 is now available. If you would like an emailed copy, please contact Brian Cummings SM at bgcummings@xtra.co.nz

Gianna's Choice

Pregnancy Options and Support. We are here 24/7 to answer your pregnancy questions and talk about your options. Call 0800 367 5433 or text 027 448 8070.

Mass has been offered for:

Recently deceased: Dorothy O'Brien, Carol Armstrong, Xavier Reidy

Anniversaries: Anthony Ford, Br Luke Paget sm, Brian McKeown, Stella Brown, Joan Shanahan, Sophie Robison, Matthew Barnett, Catherine Symes, Fr Gordie Kerrins sm, Adolf Eibl, Graham Townsely, Patricia Lockhart QSM, Olive Drane, Richard Wright, Brendan O'Connor, Monica O'Grady, Dorothea Walker, Fr Noel Delaney sm

Prayers for the Sick: Peter Aldridge, John Adams, Geoff Sweet, Dianne Sweet, Losalia Leo, John Foden, John Mora, Kerry Barber, Pam Finlayson, Paul and Francisca Sparnaay, Brendan Gilmore, Pat Johnson, Barbara and Vic Stairs, Shirley Mahony, Samara Jamed, Bill Carroll, Laurie Butler

Please remember these and any others in the Parish who are ill. If you know of anyone confined to their home or who needs a visit with Holy Communion, please contact Sister Frances at the parish office.

L.T.
McGuinness
LIMITED
BUILDING CONTRACTORS

9 Francis Place,

PO Box 9639, Wellington

Phone (04) 384 8455 Fax (04) 801 8455

Email: ltm@mcguinness.co.nz



Feeling a little peckish?

Dukes Arcade • Great food, coffee, service

Office catering available

Phone 04 499 7769 • Mobile 0274 461 650

Councillor

Nicola Young

representing Lambton ward

Please contact me if I can help with a City Council issue

021 654 844

nicola.young@wcc.govt.nz

SMOA Church App

If you haven't already downloaded our new Parish App onto your smart phone, please do! On the app, you'll be able to view the newsletters, Mass times, upcoming events and more. You will also have the option to receive alert notifications, particularly if you are a part of a Parish group or ministry. To download the app, follow the steps below:

1. Go to your App Store or Google Play Store and search "ChurchAppsNZ"
2. Download the app, and then select St Mary of the Angels as a Parish
3. The app will then prompt you to select which "alert groups" you want to be a part of. Select as many or as few of these groups as you like. You will be able to change this later if you need to.

If you need any help setting this up, please do not hesitate to contact Alexandra at the parish office.

Projectionists needed for the 9am Mass

We are in need for an additional projector operators at the 9am Mass on Sundays. You will be alternating with our other operators, and full training is provided. Please see Sr Frances or contact the parish office if you are interested.

Secular Franciscan Order (Third Order of St Francis)

Although, with the departure of the Capuchins from Wellington, our Spiritual Assistants will no longer be local, we will still be meeting monthly, usually on the first Sunday afternoon of the month. In 2021 the venue for our monthly meetings will alternate between Kilbirnie and Lower Hutt. Any Catholic feeling drawn to St Francis is welcome to come and find out more. Contact Mary on 022 059 8485.

Te Kupenga – Catholic Theological College

If you want to serve in the parish community, become a catechist, Christian or youth leader, or want to deepen your understanding of the Catholic faith, come and register at Te Kupenga – Catholic Theological College. We offer programmes that will help you build intellectual faith as you build faith communities. For more information, please visit our website at www.ctc.ac.nz, email us at offic@ctc.ac.nz or call (04) 8198380. Scholarships and online options available."

40 Days for Life: Be a sign of hope this Lent and help save lives!

February 17- March 28 – Monday to Friday – 8am to 4pm & Saturday 8am to Noon. Please protect mothers and babies through prayer, fasting, and vigil outside the local abortion centre Te Mahoe in Newtown. The vigil works on a rotating roster of one-hour prayer slots with two to three people needed to cover each hour. A positive, peaceful, and fruitful witness to the precious gift of life. You may be her last sign of hope and her first sign of mercy. To find out more and sign up for your prayer hour(s) please visit fli.org.nz/40daysforlife or contact Clare 021 231 7954 or clare.fli@xtra.co.nz

Guardians Needed

Each day our church is looked after by Guardians who take it in turn to spend an hour in the church ensuring that the many visitors feel welcome and that they respect our sacred place. We are in need of a Guardian for the following time slots:

- ◆ Mondays 1.30-2.30pm
- ◆ Tuesdays 3.30-4.30pm
- ◆ Thursdays 3.30pm-4.30pm
- ◆ Saturdays 1-2pm

If you would like to consider being a part of this important service to the parish community please contact the parish office.

Online Sessions (Evening): The Passion of Jesus Christ

Presented by Br Kieran Fenn who has a wonderful way of bringing Scripture alive. 4 Mondays in March, 7pm-8.30pm. Fee: \$25/session. ZOOM. All sessions are connected but also stand alone. Start: 01 March. www.studyjoy.nz/events/the-passion-of-jesus-christ-with-kieran-fenn-fms. For more information and registration: info@studyjoy.nz

Meditation in the Christian Tradition

On Monday 15 February at 7pm, in The Chapel of Our Lady of Compassion, 2 Rhine Street, Island Bay. "An ancient form of contemplative prayer, deeply anchored in the teachings of the early Christian desert fathers and mothers." ALL are welcome.

DEVINE LAW

L I M I T E D

For your legal requirements

legal knowledge, human wisdom

Phone **Fintan Devine** on (04) 495 3747

Email fintan@devinelaw.co.nz

www.devinelaw.co.nz

ST MARY OF THE ANGELS ONGOING MAINTENANCE APPEAL

I would like to help preserve St Mary of the Angels Church

Name:

Address:

Email:

Tel:

My contribution will be made by:

Direct Credit

Cheque

Cash

PLEASE SPECIFY AMOUNT

\$

Donations can be sent to:
Ongoing Maintenance Fund
St Mary of the Angels
17 Boulcott St
Wellington 6011

Bank Account Details:
02-0536-0003242-23
Bank of New Zealand
Lambton Quay
Wellington

St Mary of the Angels is registered with the Charities Commission. All donations are tax deductible and a receipt issued.

New Parishioners

If you are new to the parish, not yet enrolled as a parishioner, or would like to start giving regularly to the parish through our planned giving programme, please fill out one of our new parishioner forms at the back of the church, or our online Google Form at: www.forms.gle/hV7w341HEaNTkKup7

Greeting Ministry at SMOA

It is always great to be welcomed into Mass by a friendly face! We are seeking more Greeters—volunteers that welcome parishioners and visitors to our church as we gather for Sunday Mass. You will need to arrive 10 minutes before Mass and check that the tables at the church entrances are tidy, and then welcome people as they come in. At the end of Mass the Greeters will do some tidying up for the next Mass. If you are interested in being a regular Greeter please contact the parish office.

A Test of Faith

The documentary 'A Test of Faith' provides a wonderful insight into the seismic strengthening work that took place at St Mary of the Angels. The documentary also includes the story of the Church in Wellington from 1843 and in particular the three churches that have been built on the present St Mary of the Angels site. DVDs are available to purchase from the parish office for \$30, with all proceeds going towards the ongoing maintenance of the church.



Rachel's Vineyard Retreats New Zealand

"Healing the pain of abortion, one weekend at a time..."

Confidential and sensitive support for anyone whose life has been touched by abortion.

"Wipe the tears from your eyes....there is hope for your future." Jer31

info@rachelsvineyard.org.nz

04 974 8693

www.rachelsvineyard.org.nz

Mahony Horner Lawyers



Know where you stand

www.mhlaw.co.nz

bfs brendan foot supersite

One Dealership. One Contact. **7 Brands.**



HAVAL

Talk to Stephen Mills today.

Phone 587 0005 x750 or 027 575 7512 stephenm@brendanfoot.co.nz

Railway Avenue, Lower Hutt | www.brendanfoot.co.nz



Locally Owned Funeral Directors
Caring in our Community

Is dealing with a
Locally Owned
Funeral Director
important to you?



Wellington

56 Onepu Road, Kilbirnie
Telephone 04-387-8301

www.harbourcityfunerals.co.nz

A LEGACY OF FAITH



Remembering St Mary of the Angels in your will provides an ideal opportunity to make a statement of your faith and to give resources that will support your Church for years to come.

Please contact the Parish Office for further details.

Phone (04) 473 8074.



NEW WORLD
Wellington City

Open 7 days 7am - 11pm

279 Wakefield Street

Ph 04 384 8054

[www.newworld.co.nz/
wellingtoncity](http://www.newworld.co.nz/wellingtoncity)

New Parishioners

If you are new to the parish, not yet enrolled as a parishioner, or would like to start giving regularly to the parish through our planned giving programme, please fill out one of our new parishioner forms at the back of the church, or our online Google Form at: www.forms.gle/hV7w341HEaNTkKup7

Greeting Ministry at SMOA

It is always great to be welcomed into Mass by a friendly face! We are seeking more Greeters—volunteers that welcome parishioners and visitors to our church as we gather for Sunday Mass. You will need to arrive 10 minutes before Mass and check that the tables at the church entrances are tidy, and then welcome people as they come in. At the end of Mass the Greeters will do some tidying up for the next Mass. If you are interested in being a regular Greeter please contact the parish office.

A Test of Faith

The documentary 'A Test of Faith' provides a wonderful insight into the seismic strengthening work that took place at St Mary of the Angels. The documentary also includes the story of the Church in Wellington from 1843 and in particular the three churches that have been built on the present St Mary of the Angels site. DVDs are available to purchase from the parish office for \$30, with all proceeds going towards the ongoing maintenance of the church.



Rachel's Vineyard Retreats New Zealand

"Healing the pain of abortion, one weekend at a time..."

Confidential and sensitive support for anyone whose life has been touched by abortion.

"Wipe the tears from your eyes....there is hope for your future." Jer31

info@rachelsvineyard.org.nz

04 974 8693

www.rachelsvineyard.org.nz

Mahony Horner Lawyers



Know where you stand

www.mhlaw.co.nz

bfs brendan foot supersite

One Dealership. One Contact. **7 Brands.**



HAVAL

Talk to Stephen Mills today.

Phone 587 0005 x750 or 027 575 7512 stephenm@brendanfoot.co.nz

Railway Avenue, Lower Hutt | www.brendanfoot.co.nz



Locally Owned Funeral Directors
Caring in our Community

Is dealing with a
Locally Owned
Funeral Director
important to you?

Harbour City
... FUNERAL HOME ...

Wellington

56 Onepu Road, Kilbirnie
Telephone 04-387-8301

www.harbourcityfunerals.co.nz

A LEGACY OF FAITH



Remembering St Mary of the Angels in your will provides an ideal opportunity to make a statement of your faith and to give resources that will support your Church for years to come.

Please contact the Parish Office for further details.

Phone (04) 473 8074.



NEW WORLD
Wellington City

Open 7 days 7am - 11pm

279 Wakefield Street

Ph 04 384 8054

[www.newworld.co.nz/
wellingtoncity](http://www.newworld.co.nz/wellingtoncity)