

## For Your Diaries: 2020

### 27 July, Meditation in the Christian Tradition

An ancient form of contemplative prayer, deeply anchored in the teachings of the early Christian desert fathers and mothers. Held at Our Lady's Chapel at the Home of Compassion, 2 Rhine St, Island Bay. All welcome.

### 28 July, Hear the Cry of the Earth

A seminar is being held at St Thomas More Church, Wilton from 7.30pm, discussing what is happening locally that can be supported—e.g. Karori Kaitiaki, predator control, and Wellington City Council Waste Management.

### 13 August, A Quiet Day with Suzanne Aubert

10am-2pm at Crombie Chapel, Our Lady's Home of Compassion (2 Rhine Street, Island Bay). A time for gentle reflection on insights from the life and works of Venerable Suzanne Aubert. A simple lunch is provided, or bring your own. There is no fee, but a koha is appreciated. To register, email [sr.sue@compassion.org.nz](mailto:sr.sue@compassion.org.nz)

### 15 August, Coast to Coast Rosary

The Coast to Coast Rosary for Life and Faith will be held this year on Saturday 15 August at 3 pm. Please help lead or join a group in your parish or community. For more information, go to [www.coasttocoastrosary.co.nz](http://www.coasttocoastrosary.co.nz) or phone Clare 022 1912 886

### A Test of Faith

The documentary 'A Test of Faith' provides a wonderful insight into the seismic strengthening work that took place at St Mary of the Angels. The documentary also includes the story of the Church in Wellington from 1843 and in particular the three churches that have been built on the present St Mary of the Angels site. DVDs are available to purchase from the parish office for \$30, with all proceeds going towards the ongoing maintenance of the church.



### Rachel's Vineyard Retreats New Zealand

"Healing the pain of abortion, one weekend at a time..."

Confidential and sensitive support for anyone whose life has been touched by abortion.

[info@rachelvineyard.org.nz](mailto:info@rachelvineyard.org.nz)

04 974 8693

[www.rachelvineyard.org.nz](http://www.rachelvineyard.org.nz)

"Wipe the tears from your eyes....there is hope for your future." Jer31

## Mahony Horner Lawyers



Know where you stand

[www.mhllaw.co.nz](http://www.mhllaw.co.nz)

**bfs** brendan foot supersite

One Dealership. One Contact. 7 Brands.



Talk to Stephen Mills today.

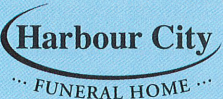
Phone 587 0005 x750 or 027 575 7512 [stephenm@brendanfoot.co.nz](mailto:stephenm@brendanfoot.co.nz)

Railway Avenue, Lower Hutt | [www.brendanfoot.co.nz](http://www.brendanfoot.co.nz)



Locally Owned Funeral Directors  
Caring in our Community

Is dealing with a  
Locally Owned  
Funeral Director  
important to you?



Wellington

56 Onepu Road, Kilbirnie  
Telephone 04-387-8301

[www.harbourcityfunerals.co.nz](http://www.harbourcityfunerals.co.nz)

## A LEGACY OF FAITH



Remembering St Mary of the Angels in your will provides an ideal opportunity to make a statement of your faith and to give resources that will support your Church for years to come.

Please contact the Parish Office for further details.  
Phone (04) 473 8074.



## NEW WORLD Wellington City

Open 7 days 7am - 11pm

279 Wakefield Street

Ph 04 384 8054

[www.newworld.co.nz/  
wellingtoncity](http://www.newworld.co.nz/wellingtoncity)

# The Angelus

## St Mary of the Angels Parish

Church and Presbytery:  
17 Boulcott Street  
Wellington Central  
Telephone: (04) 473 8074  
Parish website: [www.smoa.org.nz](http://www.smoa.org.nz)

*St Mary of the Angels is a diverse community which seeks to praise and thank God in a place of calm and beauty and strives to be Christ alive in Central Wellington*

## 26 July 2020, 17th Sunday in Ordinary Time

### APPEARANCES CAN BE DECEPTIVE!

Am I alone in thinking that the worst of the Corona virus is behind us now? When I wake up each morning I hardly give the virus a second thought. Level 4 lockdown seems such a long time ago already. The much heralded new-normal is nowhere in sight for me. My life at St Mary of the Angels has resumed basically where it left off. When I walk in the streets of downtown Wellington everything seems much as it was back in March – no queues in sight, people are shopping, meeting in cafés, just going about their business as they always did.

I must admit that I no longer pay much attention to the daily up-dates of numbers of infected people in New Zealand. I give them only a casual glance. It is only when I read the news from overseas where the virus is still causing so much fear, distress and sadness that I am jolted back into the realization that all is not well with the world. Far from it! And as I read of the soaring numbers of people hospitalized because of the virus in countries like the USA, Brazil and India I catch myself thinking, "Aren't we lucky", "Thank goodness for our political and health leaders", "And thank goodness too for our team of five million".

But is all as well as it appears? Appearances can be deceptive! And, I think, what I have just described are only appearances, not the underlying reality. We may have dodged the worst of the effects of the Corona virus – except for the economic hardship that is inevitably going to take its toll in the months ahead and cause real hardship for many – but there are other forms of sickness in our society just as hidden, just as deadly. The recent behaviour of certain politicians makes that very clear!

Surely realities such as the prevalence of depression in New Zealand, the rates of suicide, the huge flow of drugs entering into our communities and numbers in prison all point to a wider, deeper lack of health in our country? What, then, is the state of our moral health as a nation?

Is this a question we ask ourselves, do we debate with others? Do we challenge ourselves and others with the way, the truth and the life of Jesus Christ whom we have come to this church to adore and worship?

Are we called personally and as a community to help reset the needle of the moral compass of New Zealand?

*Fr Kevin Mowbray SM*

—Parish Priest

### Parish Priest

Fr Kevin Mowbray SM  
[smoapp@xtra.co.nz](mailto:smoapp@xtra.co.nz)

### Assistant Priests

Fr Peter McAfee SM  
Fr Pat Brophy SM  
Fr Joe Savei SM

### Pastoral Worker

Sr Frances Gibbs CSB

### In Residence

Fr Brian Wysocki SM

### Director of Music

William McElwee  
[wmcelweemusic@gmail.com](mailto:wmcelweemusic@gmail.com)

### Parish Accountant

[smoamanager@xtra.co.nz](mailto:smoamanager@xtra.co.nz)

### Parish Office

[smoaooffice@xtra.co.nz](mailto:smoaooffice@xtra.co.nz)

### MASSES

Sunday 7am, 9am, 11am, 5pm

Mon-Fri 7.30am, 12.05pm, 5.15pm

Saturday 11am

### EACH MONTH

4th Saturday Sacrament of Anointing  
at 11am Mass

### ADORATION

Mon-Fri 6.30am - 7.20am

Friday 11am - Noon

### RECONCILIATION

Mon-Thurs 11.30am - Noon

12.30pm - 1pm

4.30pm - 5pm

Friday 11am - 11.50pm

12.30pm - 1pm

4.30pm - 5pm

Saturday 10.30am - 10.55am

4pm - 5pm

### This Week's Readings

**First Reading** Kings 3:5, 7-12  
*You have asked for wisdom.*

**Second Reading** Romans 8:28:30  
*He predestined us to become true images of his Son.*

**Gospel Reading** Matthew 13:44:52  
*He sells everything he owns and buys the field.*

### Next Week's Readings

**First Reading** Isaiah 55:1-3  
**Psalm** 144

**Second Reading** Romans 8:35, 37-39  
**Gospel Reading** Matthew 14:13-21



### Last Sunday's Collection

Total: \$4665

### Missing Parish Statue

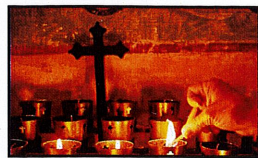
The statue of Our Lady, which the *Legion of Mary* provides for weekly loan to promote Daily Rosary around the parish is currently missing. Perhaps understandably, it has not been returned to the Sacristy, nor the List (at the back of the church) filled-in, since before the COVID-19 Level 4 Lock-down. Could anyone who knows of the current whereabouts of the statue please contact the Legion Praesidium Chairman as soon as possible by phoning Neil on 021 896 924

### Mass has been offered for:

**Recently Deceased:** Noreen Friel, Raymond O'Brien, Cecilia Bok, Patricia Smyth, Maria Blue, Barbara Kriebel

**Anniversaries:** James Healy, Mary-Rose Keller, John Gordon, Marion Alexander, Jadwiga Kolaczynska, Maria Sledzinski, Eileen Gregory

**Prayers for the Sick:** Peter Aldridge, Tony Crawley, John Adams, Geoff Sweet, Dianne Sweet, Losalia Leo, John Foden, John Mora, Kerry Barber, Pam Finlayson, Paul and Francisca Sparnaay, Brendan Gilmore, Pat Johnson, Peter Aston, Barbara and Vic Stairs, Shirley Mahony, Dennis Whimp, Doug Matthews



*Please remember these and any others in the Parish who are ill. If you know of anyone confined to their home or who needs a visit with Holy Communion, please contact Sister Frances at the parish office.*

### Responsorial Psalm 118

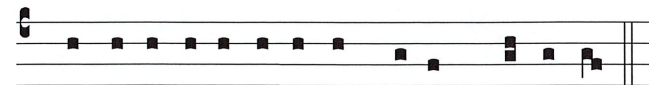
**R. Lord, I love your commands.**

My part, I have resolved, O Lord, is to obey your word.  
The law from your mouth means more to me than silver and gold. **R**

Let your love be ready to console me by your promise to your servant.  
Let your love come to me and I shall live for your law is my delight. **R**

That is why I love your commands more than finest gold.  
That is why I rule my life by your precepts: I hate false ways. **R**

Your will is wonderful indeed; therefore I obey it.  
The unfolding of your word gives light and teaches the simple. **R**



Quomodo di-le-xi le-gem tu-am Domi-ni.

*O how I have loved thy law, O Lord!*

### Reminder: Feast of the Assumption

A reminder that **Saturday 15 August** is the Feast of the Assumption—a Holy Day of Obligation. There will be one Mass only at 11am, as well as Vespers at 7.30pm.

### Notice to Parishioners

During the recent COVID-19 lockdown we discovered that our database of parishioners was out-of-date. Contact details for many parishioners were incorrect. Over the coming weeks, then, we would like to validate your addresses, emails and phone numbers. We will try and make contact with everyone on the parish database in a systematic way. **We ask you please to respond to our email or text message once you receive it.**

For privacy reasons we will not send your details to you. Instead we will request that you reply with your correct details by return email or by contacting the parish office. Even if you only confirm that we already hold the right details that would also be useful for us to know.

Should you have any questions on this matter please contact Alexandra at the Parish Office by phone (04) 473 8074 or by email at [smoaoffice@xtra.co.nz](mailto:smoaoffice@xtra.co.nz)

—Fr Kevin Mowbray SM, Parish Priest

### Planned Giving Receipts & Envelopes

The remaining donation receipts and donation envelopes are in the church now. Please collect these if you haven't done so already.

### A Quiet Day with Suzanne Aubert

A time for gentle reflection on insights from the life and works of Venerable Suzanne Aubert—**Thursday 13 August** from 10am to 2pm at the Crombie Chapel at Our Lady's Home of Compassion (2 Rhine Street, Island Bay). A simple lunch is provided, or bring your own. There is no fee but a koha is greatly appreciated. Registration is required: email [sr.sue@compassion.org.nz](mailto:sr.sue@compassion.org.nz)

### Wellington Curtain Bank

Spread the word that those with a Community Services Card or a SuperGold Combo Card and live in the Wellington region can get free double-layered made-to-measure curtains from the Wellington Curtain Bank. For more information: [www.sustaintrust.org.nz/free-curtains](http://www.sustaintrust.org.nz/free-curtains)

### Alert Level 1 Parish Guidelines

- ◆ **Holy Communion** - The faithful are to receive Holy Communion in the hand only, and not from the chalice.
- ◆ **Sign of Peace** - The exchange of peace can be by spoken word, by a gesture such as bowing, or by a pause for silent prayer for peace. At this stage people should not feel obliged to shake hands.
- ◆ **Holy Water Fonts** - are to remain without Holy Water.

These guidelines will be re-evaluated as further health advice is given. The dispensation from Sunday Mass remains in place. People should stay home if they are sick, and contact their doctor if they have flu-like symptoms.

### Parish Office Support Roles at Wellington South Parish

Wellington South Parish are seeking to employ suitably qualified persons to join our Parish Office Support Team in administration and finance roles. Both are part-time, and the parish is open to one person with suitable skills doing both. Please send your application and CV to Fr Doug Shepherd at [doug.shepherd@wellingtonsouthcatholic.org](mailto:doug.shepherd@wellingtonsouthcatholic.org) and if you want a copy of the job descriptions email [office@wellingtonsouthcatholic.org](mailto:office@wellingtonsouthcatholic.org)

### Meditation in the Christian Tradition

An ancient form of contemplative prayer, deeply anchored in the teachings of the early Christian desert fathers and mothers. Held at Our Lady's Chapel at the Home of Compassion, 2 Rhine St, Island Bay on **Mondays 27 July**. All are welcome.

### Gianna's Choice

Pregnancy Options and Support. We are here 24/7 to answer your pregnancy questions and talk about your options. Call 0800 367 5433 or text 027 448 8070.



9 Francis Place,  
PO Box 9639, Wellington  
Phone (04) 384 8455 Fax (04) 801 8455  
Email: [ltm@mcguinness.co.nz](mailto:ltm@mcguinness.co.nz)



*Feeling a little peckish?*  
Dukes Arcade • Great food, coffee, service  
Office catering available  
Phone 04 499 7769 • Mobile 0274 461 650

**Councillor**  
**Nicola Young**  
representing Lambton ward

*Please contact me if I can help with a City Council issue*  
**021 654 844**  
[nicola.young@wcc.govt.nz](mailto:nicola.young@wcc.govt.nz)

**DEVINE LAW**  
**L I M I T E D**

For your legal requirements  
*legal knowledge, human wisdom*  
Phone **Fintan Devine** on (04) 495 3747  
Email [fintan@devinelaw.co.nz](mailto:fintan@devinelaw.co.nz)  
[www.devinelaw.co.nz](http://www.devinelaw.co.nz)

### ST MARY OF THE ANGELS ONGOING MAINTENANCE APPEAL

I would like to help preserve St Mary of the Angels Church

Name:

Address:

Email:  Tel:

My contribution will be made by:

- Direct Credit
- Cheque PLEASE SPECIFY AMOUNT
- Cash \$

Donations can be sent to:  
Ongoing Maintenance Fund  
St Mary of the Angels  
17 Boulcott St  
Wellington 6011

Bank Account Details:  
02-0536-0003242-23  
Bank of New Zealand  
Lambton Quay  
Wellington

St Mary of the Angels is registered with the Charities Commission. All donations are tax deductible and a receipt issued.