

## For Your Diaries : 2017

### 3 & 10 September, Parish Preparation for the Synod

Meetings will be held after the 9am, 11am and 5pm Masses to share responses with the Synod delegates. See Angelus for more information.

### 7 September, Quiet Day with Suzanne Aubert

An invitation to spend a few hours resting and reflecting on an aspect of the life and vision of Suzanne Aubert. 10.30am to 2.30pm at Our Lady's Home of Compassion, 2 Rhine Street, Island Bay.

### 7 September, NZ String Quartet

Join us on our 30th-anniversary tour for a concert filled with passion, yearning, joy and heartache. St Mary of the Angels Church at 7.30pm. Admission: Adult \$45, Seniors \$40, Tertiary Student \$15, School Children \$5

### 10-16 September, Social Justice Week

Challenge 2000 is running a week of fun and interactive activities for young people, children and young adults. All events will be based at 1 Wanaka Street, Johnsonville. To sign up, check out the flyer in the foyer for more information, all are welcome.

### 16 September, Vigil for the Unborn

St Anne's Catholic Church, Emmett Street, Newtown. 10 am - 12.00 p.m. includes Mass.

### 16 September, Christian Life Programme

Couples for Christ Wellington invites married couples and singles to a Christian Life Programme. Orientation & Talk at St Francis de Sales Church, Island Bay. Registration starts at 1.30pm.

### 17 September, The Bach Choir

The Bach Choir and guest conductor Maaikie Christie-Beekman will present a concert of music at St Andrews on the Terrace at 3.30pm. Ticket price is \$30 general, \$25 concession, available on Eventfinda, from Marsden Books, choir members, and door sales on the day.

### 22-24 September, 'Current of Grace' Conference

"Celebrating the diverse fruits and family of the Catholic Charismatic Renewal in New Zealand". At the Distinction Hotel and the Cathedral of the Holy Spirit, Palmerston North. For further information and to register on-line visit [www.ccrnz.org/register2017](http://www.ccrnz.org/register2017)

### 11-12 November, Engaged Encounter

Engaged Encounter is a weekend experience for couples intending to be married. Presbytery, 301 Karori Road, Karori. For details go to the website at [www.ceewellington.org.nz](http://www.ceewellington.org.nz) or phone Kate & Simon Olsen: (04) 801 6192, or email [simonolsen@gmail.com](mailto:simonolsen@gmail.com).

# Pleroma

## Christian Supplies

Specialists In Catholic Product

Books \* DVD's \* Statues \* Gifts  
Rosaries \* Missals \* Bibles \* Music  
Teaching \* Baptism \* Confirmation  
First Holy Communion  
Bible Study \* Advent & Christmas

[www.christiansupplies.co.nz](http://www.christiansupplies.co.nz)



# NEW WORLD

Wellington City

Open 7 days 7am – 11pm

279 Wakefield Street. Ph 04 384 8054

[www.newworld.co.nz/wellingtoncity](http://www.newworld.co.nz/wellingtoncity)



Is dealing with a  
**Locally Owned  
Funeral Director**  
important to you?



Wellington  
56 Onepu Road, Kilbirnie  
Telephone 387-8301

Email: [harbour@funeral-link.co.nz](mailto:harbour@funeral-link.co.nz)  
[www.harbourcityfunerals.co.nz](http://www.harbourcityfunerals.co.nz)

## A LEGACY OF FAITH



Remembering St Mary of the Angels in your will provides an ideal opportunity to make a statement of your faith and to give resources that will support your Church for years to come.

Please contact the Parish Office for further details.  
Phone (04) 473 8074.

## Quality Te Aro Offices

5-7 Vivian Street, Wellington

Great location close to Cafe district  
Busy arterial road  
Air conditioned  
Car parking available

Office suites available at an affordable price. Semi-serviced suites (approx 18sqm) that are fully furnished. There is also a company floor area (approx 200sqm) with 5x partitioned offices, Board room and Meeting room. Shared kitchen and shower facilities. Car parking available in the building at an additional rate.

This is a must see for new businesses on a budget. Earthquake Engineering Evaluation IEP Report NBS 80%.

Contact by e-mail for further information:  
[mariabaldock@gmail.com](mailto:mariabaldock@gmail.com)

# The Angelus

## St Mary of the Angels Parish

### Church and Presbytery:

17 Boulcott Street,

Wellington Central

Telephone: 473 8074

Parish website: [www.smoa.org.nz](http://www.smoa.org.nz)

*St Mary of the Angels is a diverse community which seeks to praise and thank God in a place of calm and beauty and strives to be Christ alive in Central Wellington*

## 3 September 2017, 22nd Sunday in Ordinary Time

### Adult Rite of Christian Initiation (RCIA)

The Adult Rite of Christian Initiation (RCIA) is the process through which adults learn about the Catholic Faith. The next RCIA meeting is this Tuesday 5 September at 7.15pm in the Parish Hall.

If you know someone whom you think may be interested in learning more about the Catholic Faith invite them along on Tuesday evening. A lovely way to support them would be to bring them along yourself. This would give them a great deal of encouragement in their search for God in their lives.

### Parish Preparation for the Archdiocesan Synod

The Wellington Archdiocesan Synod will be held over the weekend of 15-17 September. Cardinal John has explained that preparation for the Synod should be "a discernment process, listening to the Spirit then to one another as we seek to understand where God is leading us."

At St Mary of the Angels we followed a two-step process. During August we reflected and meditated on the topics for the Synod.

Now we are invited to share our responses with the Synod delegates after Masses today and next Sunday. The meetings will be held in the Presbytery after the 9am, the 11am and the 5pm Masses.

### No Evening Mass

There will no evening Mass at 5.15pm Mass this Thursday 7 September. The New Zealand String Quartet will be playing a concert in the Church at 7.30pm and they need to practice from 4pm. The Quartet have been very supportive of the Parish during the fundraising for the seismic strengthening of the Church.

Come along and enjoy this very accomplished Quartet in the acoustic beauty of our Church. Tickets for the concert are available on TicketTek or door sales will be available on the night.

*Father Barry Scannell s.m.  
Parish Priest*

### Parish Priest

Fr Barry Scannell SM

[smoapp@xtra.co.nz](mailto:smoapp@xtra.co.nz)

### Assistant Priests

Fr Kevin Conroy SM

Fr Joe Savesi SM

### Pastoral Worker

Sr Frances Gibbs CSB

### Director of Music

Robert Oliver

[robert.oliver@paradise.net.nz](mailto:robert.oliver@paradise.net.nz)

### Parish Accountant

Jeanette Temelo

[smoamanager@xtra.co.nz](mailto:smoamanager@xtra.co.nz)

### Parish Office

[smoaooffice@xtra.co.nz](mailto:smoaooffice@xtra.co.nz)

### MASSES

Sunday 7am, 9am, 11am, 5pm

Monday to Friday 7:30am, 12:05pm,  
& 5:15pm

Saturday 11am

### EACH MONTH

4th Saturday 11am Mass with  
Sacrament of Anointing

### ADORATION

Monday to Friday 6:45am-7:30am

Friday 11am-noon

### RECONCILIATION

Monday to Thursday 11:30am-noon  
12:30pm-1:00pm  
4:30pm-5:00pm

Friday 11:00am-noon  
12:30pm-1:00pm  
4:30pm-5:00pm

Saturday 10:30am-11:00am  
4:00pm-5:00pm

### This Week's Readings

**First Reading** Jer 20:7-9  
*The word of the Lord God has meant derision for me.*

**Second Reading** Rom 12:1-2  
*May you present your bodies as a living sacrifice.*

**Gospel Reading** Matthew 16:21-27  
*Whoever wishes to come after me must deny himself.*

### Next Week's Readings

**First Reading** Ezek 33:7-9

**Psalm** 94

**Second Reading** Rom 13:8-10

**Gospel Reading** Matthew 18:15-20

### Last Sunday's Collection

Total: \$5,143



### Altar Servers Needed

We require more Altar Servers for the 11am Mass. If you are interested please contact the Parish Office or Margaret Clark on 479 2820.

### NZ String Quartet

Join us on our 30th-anniversary tour for a concert filled with passion, yearning, joy and heartache. Each of our two programmes explores themes of love and desire and will take you on an emotional journey through some of the great works of the repertoire. Thursday 7 September in St Mary of the Angels Church at 7.30pm.

Admission: Adult \$45, Seniors \$40, Tertiary Student \$15, School Children \$5

### Mass has been offered for:

**Recently Deceased:** Terence Oliver

**Anniversaries:** Victorio Laureles, Patricia Smith, Judith Mary Blair, Carmel Pledger, Marie McWilliams

**Prayers for the Sick:** Mary Rose Keller, Geoff Sweet, Dianne Sweet, Margaret Such, Bryce Toimata, Colleen Kennedy, Gil Lescher, Mary Crompton, Jenni Rowell, Teresa Jeong, Dr Peter Brooke, Richard Wright, Losalia Leo, Patricia Smyth, John Foden, Imelda Reeve, Jan Tuinman, John Mora, Maria Kim, Carol Aldridge, Maureen McDonald, Leo Buchanan



*Please remember these and any others in the Parish who are ill. If you know of anyone confined to their home or who needs a visit with Holy Communion, please contact Sister Frances at the Parish Office.*

### Responsorial Psalm 62

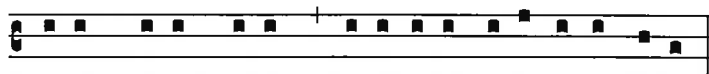
**R. My soul is thirsting for you, O Lord my God.**

O God, you are my God, for you I long;  
for you my soul is thirsting.  
My body pines for you  
like a dry, weary land without water. **R.**

So I gaze on you in the sanctuary  
to see your strength and your glory.  
For your love is better than life,  
my lips will speak your praise. **R.**

So I will bless you all my life,  
in your name I will lift up my hands.  
My soul shall be filled as with a banquet,  
my mouth shall praise you with joy. **R.**

For you have been my help;  
in the shadow of your wings I rejoice.  
My soul clings to you;  
your right hand holds me fast. **R.**



De-us, De-us me-us, si-ti-vit in te a-ni-ma me-a

*O God, my God, for thee my soul hath thirsted.*

### Quiet Day with Suzanne Aubert

An invitation to spend a few hours resting and reflecting on an aspect of the life and vision of Suzanne Aubert. Lunch included – please register for catering purposes. Thursday 7 September (10.30am to 2.30pm). Our Lady's Home of Compassion, 2 Rhine Street, Island Bay. Email: retreat@compassion.org.nz or phone 04 383 7769 for enquires.

### Prayer for Synod- 2017

God, whose power is at its best in weakness:  
You have entrusted us, in our frailty,  
with the awesome privilege  
of being your presence in our world.  
You say to each of us: *Go, you are sent.*

In naming and sending,  
you honour our ability to serve.  
Yet we know our need of you,  
even as we travel in the  
echo of your voice: *Go, you are sent.*

Bless our Archdiocese of Wellington as we set out  
and, as you have done for so many,  
strengthen our weariness; steady our trembling.  
May we never forget that you are with us  
and joyfully answer your call: *Go, you are sent.*

We go, gifting your mercy, proclaiming your truth,  
and celebrating your goodness;  
our words and actions  
revealing your face  
to all we meet.

Blessed are you, God of the journey. Amen

### Engaged Encounter

Engaged Encounter is a weekend experience for couples intending to be married, 11-12 November. Registrations close 2 weeks before. Presbytery, 301 Karori Road, Karori. For details go to the website at [www.ceewellington.org.nz](http://www.ceewellington.org.nz) or phone Kate & Simon Olsen: (04) 801 6192, or email [simonolsen@gmail.com](mailto:simonolsen@gmail.com)

### Vigil for the Unborn

Saturday 16th September . St Anne's Catholic Church, Emmett Street, Newtown. 10 am - 12.00 p.m. includes Mass. Come-Pray-Sacrifice for the Unborn and a Culture of Life in NZ. For more information contact Family Life International on 2378343

### 'Current of Grace' Conference

"Celebrating the diverse fruits and family of the Catholic Charismatic Renewal in New Zealand"  
On Friday 22 – Sunday 24 September at the Distinction Hotel and the Cathedral of the Holy Spirit, Palmerston North. Guest presenters include Bishop Denis Browne, Fr John Rea, Diana Ingle CCRNZ Chairperson. Ann Brereton from ICCRS will share on 2017 Vatican report Pope Francis's exciting new plans for us all! For further information and to register on-line visit [www.ccrnz.org/register2017](http://www.ccrnz.org/register2017)

### Church Guardians

Each day our Church is looked after by Guardians who take it in turn to spend an hour in the Church ensuring that the many visitors respect the sacred place that is St Mary of the Angels. We need more Guardians so that we can keep the Church open each day. If you would like to consider being part of this ministry please contact Terry Dodson on [terrydodson@vodafone.co.nz](mailto:terrydodson@vodafone.co.nz) or 0221035014

### The Bach Choir

The Bach Choir and guest conductor Maaikie Christie-Beekman will present a concert of music at St Andrews on the Terrace on Sunday 17th September at 3.30pm. The programme includes works by Mozart, Brahms, Rheinberger and Bruckner, with piano accompaniment by Douglas Mews and Emma Sayers. Ticket price is \$30 general, \$25 concession, available on Eventfinda, from Marsden Books, choir members, and door sales on the day.

### Social Justice Week

As a part of Social Justice Week 2017 and in response to Pope Francis' call to weave bonds of belonging in our local communities, Challenge 2000 is running a week of fun and interactive activities for young people, children and young adults. These will take place between Sunday 10<sup>th</sup> – Saturday 16<sup>th</sup> September. All events will be based at 1 Wanaka Street, Johnsonville. To sign up, check out the flyer in the foyer or visit [www.challenge2000.org.nz](http://www.challenge2000.org.nz) for more information, all are welcome.

### Christian Life Programme

Couples for Christ Wellington invites married couples and singles to a Christian Life Programme. Orientation & Talk on 16 September at St Francis de Sales Church, Island Bay. Registration starts at 1.30pm. Participation is free of charge and afternoon tea will be served. For more information, please contact Donald & Tin Elemento on 0278774488 or Roman & Lorna Zarate on 021 118 7925. visit us at [www.couplesforchristwellington.nz](http://www.couplesforchristwellington.nz)

## ST MARY OF THE ANGELS EARTHQUAKE STRENGTHENING APPEAL

I would like to help preserve St Mary of the Angels Church

Name: \_\_\_\_\_

Address: \_\_\_\_\_

Email: \_\_\_\_\_

Tel: \_\_\_\_\_

My contribution will be made by:

Direct Credit

Cheque

Cash

PLEASE SPECIFY AMOUNT

\$

Donations can be sent to:  
Seismic Strengthening Fund  
St Mary of the Angels  
17 Boulcott St  
Wellington 6011

Bank Account Details:  
02-0536-0003242-23  
Bank of New Zealand  
Lambton Quay  
Wellington

St Mary of the Angels is registered with the Charities Commission. All donations are tax deductible and a receipt issued.



9 Francis Place,

PO Box 9639, Wellington

Phone (04) 384 8455 Fax (04) 801 8455

Email: [ltm@mcguinness.co.nz](mailto:ltm@mcguinness.co.nz)



Feeling a little peckish?

Dukes Arcade · Great food, coffee, service  
Office catering available

Phone 499 7769 · Mobile 0274 461 650

This newsletter is kindly sponsored by:  
Michael Burrowes  
of Burrowes and Company  
Barristers and Solicitors  
phone (04) 473 7733

**BURROWES**  
and Company

Barristers and Solicitors