

## For Your Diaries : 2015

### 5 December, Christian meditation

There will be a day of reflection and meditation at the Home of Compassion, Island Bay on Saturday 5th December from 10am to 3pm. Bring a lunch and donation to cover expenses. Contact Sr Sue Cosgrove 3837769 for further information. All are most welcome.

### 8 December, Year of Mercy

Pope Francis has invited the Church to enter into a special Jubilee Year of Mercy, beginning on 8 December 2015. Please come to Eucharist and Opening of the Holy Door of Mercy at Cathedral of the Sacred Heart, Wellington on Tuesday 8 December 2015 at 7pm.

### 11 December, Friday Advent Meditations

All are invited to the series of Advent Meditations following 12pm Mass each Friday at St Mary of the Angels. Midday prayers for the Season of Advent, with a small group from the choir singing the 'O' antiphons and other music for Advent.

### 12 December, New Zealand Symphony Orchestra Handel's Messiah

With international Baroque specialist Nicholas McGegan at the helm, the New Zealand Symphony Orchestra combines with the cream of Wellington's choral talent in the NZSO Messiah Chorale and a host of jewel-bright opera stars to herald the joys of Christmas. 6.30pm Saturday 12 December at the Michael Fowler Centre. Tickets available through Ticketek.

### 16 December, Carols with the Angels

Our annual Carols with the Angels will be held on Wednesday 16 December, 7.30pm at St John's Presbyterian Church, corner Willis and Dixon St.

### 17 December, Joshua Catholic Men's Christmas Celebration Mass

Joshua Catholic Men's Fellowship invites you and your friends and family to the End of Year Mass on Thursday 17th December 2015 at 7.30pm at Sacred Heart Cathedral, Hill Street, Thorndon followed by refreshments. Celebrant: Fr Peter Ewart S.M. Ring John Taylor 04 389 8915 or 021 107 8538 or e-mail: jntaylor@paradise.net.nz

**13 & 25 December, Traditional Latin Mass** will be offered on 13 December and Christmas Day. San Antonio Church, 78 Oroua St., Eastbourne, at 12.30pm. See us on Facebook: [www.facebook.com/WellingtonLatinMass](http://www.facebook.com/WellingtonLatinMass). There will be no Traditional Latin Mass on Sunday 27 December. From January 2016, there is Latin Mass on 1st, 3rd, and 5th (if any) Sundays of the Month 12.30pm at San Antonio Church in Eastbourne. For Enquiries, ring/text Neil at 021896924.

**WEST PLAZA HOTEL**  
LOCATION • COMFORT • STYLE

**WEEKEND SPECIAL \$135**

One night's stay &  
cooked breakfast for two

**BOOK NOW**

*\*Subject to availability*

[westplaza.co.nz](http://westplaza.co.nz) / P 0800 731 444

E [reservations@westplaza.co.nz](mailto:reservations@westplaza.co.nz)

110 Wakefield St, Wellington

This newsletter is kindly sponsored by:

**Michael Burrowes**  
of Burrowes and Company  
Barristers and Solicitors  
phone (04) 473 7733

**BURROWES**  
and Company

Barristers and Solicitors

**Books \* DVD's \* Statues \* Gifts**  
**Rosaries \* Missals \* Bibles \* Music**  
**Teaching \* Baptism \* Confirmation**  
**First Holy Communion**  
**Bible Study \* Advent & Christmas**

[www.christiansupplies.co.nz](http://www.christiansupplies.co.nz)

**Pleroma**  
**Christian Supplies**  
Specialists In Catholic Product



Is dealing with a  
**Locally Owned**  
**Funeral Director**  
important to you?

**Harbour City**

FUNERAL HOME

**Wellington**

56 Onepu Road, Kilbirnie

Telephone 387-8301

Email: [harbour@funeral-link.co.nz](mailto:harbour@funeral-link.co.nz)

[www.harbourcityfunerals.co.nz](http://www.harbourcityfunerals.co.nz)

## A LEGACY OF FAITH



Remembering St Mary of the Angels in your will provides an ideal opportunity to make a statement of your faith and to give resources that will support your Church for years to come. Please contact the Parish Office for further details. Phone (04) 473 8074.

## Quality Te Aro Offices

5-7 Vivian Street, Wellington

Great location close to Cafe district  
Busy arterial road  
Air conditioned  
Car parking available

Office suites available at an affordable price. Semi-serviced suites (approx 18sqm) that are fully furnished. There is also a company floor area (approx 200sqm) with 5x partitioned offices, Board room and Meeting room. Shared kitchen and shower facilities. Car parking available in the building at an additional rate.

This is a must see for new businesses on a budget. Earthquake Engineering Evaluation IEP Report NBS 80 %

Contact by e-mail for further information: [mariabaldock@gmail.com](mailto:mariabaldock@gmail.com)

# The Angelus

## St Mary of the Angels Parish

### Church and Presbytery

17 Boulcott Street

Wellington Central

Telephone: 04 473 8074

Parish website: [www.smoa.org.nz](http://www.smoa.org.nz)

*St Mary of the Angels is a diverse community which seeks to praise and thank God in a place of calm and beauty and strives to be Christ alive in Central Wellington*

### MASS TIMES

#### Sunday

7am *St Mary of the Angels Parish Hall*

9am *Sacred Heart Cathedral*

12pm *St John's Presbyterian Church*

5pm *St Joseph's Church, Mt Victoria*

#### Monday to Friday

*St Mary of the Angels Parish Hall*

7:30am, 12:05pm & 5:15pm

#### Saturday

11am *St Mary of the Angels Parish Hall*

#### SACRAMENT OF ANOINTING

*St Mary of the Angels Parish Hall*

11am Mass 4th Saturday of each month

#### ADORATION

*St Mary of the Angels Parish Hall*

**Monday to Friday** 6:45am - 7:30am

**Friday** 11:00am-12:00pm

#### RECONCILIATION

*St Mary of the Angels Presbytery*

**Monday to Thursday** 11:30am-12:00pm

12:30pm - 1:00pm

4:30pm - 5:00pm

#### Friday

11:00am-12:00pm

12:30pm - 1:00pm

4:30pm - 5:00pm

#### Saturday

10:30am-11:00am

4:00pm - 5:00pm

#### Parish Priest

Fr Barry Scannell SM

[smoapp@xtra.co.nz](mailto:smoapp@xtra.co.nz)

#### Assistant Priest

Fr Carl Telford SM

#### Adult Education

Fr Michael Young SM

#### Pastoral Worker

Sr Frances Gibbs CSB

#### Director of Music

Robert Oliver

[robert.oliver@paradise.net.nz](mailto:robert.oliver@paradise.net.nz)

#### Parish Accountant

Jeanette Temelo

[smoamanager@xtra.co.nz](mailto:smoamanager@xtra.co.nz)

#### Parish Office

[smoaoffice@xtra.co.nz](mailto:smoaoffice@xtra.co.nz)

## 6 December 2015, 2nd Sunday of Advent, Year C

### Year of Mercy

Pope Francis has invited the Church to enter into a special Jubilee Year of Mercy, beginning on 8 December 2015. To mark this occasion you are all warmly invited to:

**Eucharist and Opening of the Holy Door of Mercy**

at

**Cathedral of the Sacred Heart, Wellington**

on

**Tuesday 8 December 2015 at 7pm**

### 21st Anniversary of the Korean Catholic Community of Wellington

Today we are proud to celebrate the 21st anniversary of the Korean Catholic Community of Wellington (KCCW).

In the beginning, a few Korean people met in their homes to promote fellowship among Korean Catholics throughout Wellington. Very soon a regular gathering was formed, but we still went to the Mass in different churches on Sundays. We felt keenly the necessity of a parish that we were able to participate in liturgy including the Mass together. As some of Korean people got baptised at St Mary of the Angels (SMOA) at that time, it was only natural for KCCW to make SMOA as our parish in early 1995. Since then we have been actively involved in various liturgical activities and events of SMOA – altar servers, collectors, special ministers of Holy Communion, and singing at the Mass and the Carols with Angels.

As a Community we have gathered in the Parish Hall after Mass each Sunday where we have Catholic teaching and Scripture studies, pray and practice singing with organist David Trott. Also we have Scripture sharing groups meeting fortnightly in the homes and run a regular retreat programme.

We are very proud of our history of Korean Catholic church that was started by lay people without any formal missionary priests and strengthened by the century-long persecution that produced thousands of martyrs, 103 of whom were canonised by Pope John Paul II in 1984 and 124 were beautified by Pope Francis in 2014.

Celebrating the 21st anniversary, we remember our martyrs and will try to follow the example of their spirituality.

We thank you Fr Barry Scannell, pastoral team and parishioners of SMOA for your support.

### This Week's Readings

**First Reading:** Baruch 5:1-9  
*Jerusalem - God will show you splendour.*

**Second Reading:** Philippians 1:3-6  
*Show yourselves sinless and without blame in the day of Christ.*

**Gospel:** Luke 3:1-6  
*All people shall see the salvation of God.*

### Next Week's Readings

**First Reading:** Zephaniah 3:14-18

**Psalm:** Isa 12:2-6

**Second Reading:** Philippians 4:4-7

**Gospel:** Luke 3:10-18

### Last Sunday's Collection

Total	\$4,800
Parish Expenses	\$3,264
Support of House	\$1,536



### Planned Giving

If you would like to join the St Mary of the Angels Planned Giving Scheme please contact the Parish Office. A tax rebate of 33.3% may be claimed on all your contributions.

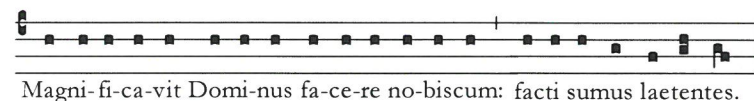
### Columban Calendars

2016 Columban Calendars are available for purchase from the Parish Office for \$12 each. All proceeds go toward supporting St Columbans Mission Society.



### Advent Meditations

The Choir of St Mary of the Angels invites everyone to Advent Meditations after 12pm Mass each Friday. Midday prayers for the Season of Advent, with a small group from the choir singing the 'O' antiphons and other music for Advent.



*The Lord hath done these things for us: we are become joyful.*

### Responsorial Psalm Ps 125

**R The Lord has done great things for us; we are filled with joy.**

When the Lord delivered Zion from bondage, it seemed like a dream.  
Then was our mouth filled with laughter, on our lips there were songs. **R.**

The heathens themselves said: 'What marvels the Lord worked for them!'  
What marvels the Lord worked for us! Indeed we were glad. **R.**

Deliver us, O Lord, from our bondage as streams in dry land.  
Those who are sowing in tears will sing when they reap. **R.**

They go out, they go out, full of tears carrying seed for the sowing:  
they come back, they come back, full of song, carrying their sheaves. **R.**

### Prayer for Seismic Strengthening Work

Gracious God, Creator of the Universe, you made us in your own image and likeness.

You gave us wisdom and understanding, grateful hearts and creative minds.

We pray that our beautiful Church will be strengthened against the peril of earthquake through the generosity of parishioners, the community of Wellington and people throughout New Zealand.

We ask, Lord, that you abundantly bless those who have already donated funds, skill and expertise to this project.

May St Mary of the Angels Church be a symbol of a unified community that will gather to praise and thank you.

Mary our Mother, pray for us.

### Carols with the Angels

Our annual Carols with the Angels will take place on Wednesday 16th December, 7.30pm at St John's Presbyterian Church, corner Willis and Dixon St. The St Mary of the Angels Choir will lead the singing along with the Salvation Army Band Please come and join in this special celebration!



### The Catholic Enquiry Centre

The Catholic Enquiry Centre is where you will find information about the Catholic Faith. Contact Fr Allan Jones: email - [info@catholicenquiry.org.nz](mailto:info@catholicenquiry.org.nz) or phone 04 385 8518 or visit [www.catholicenquiry.org.nz](http://www.catholicenquiry.org.nz)

### SMAYACs

*(Saint Mary of the Angels Young Adult Catholics)*

St Mary of the Angels staff and parishioners wish the SMAYACs and all youth and young adults in the parish safe and happy holidays.

Many students have recently completed their school and university exams and are returning home for the summer or leaving Wellington to begin summer jobs. We wish them success for their hard work this year and look forward to welcoming them back in 2016.

### SMOA Recipe Book

We are planning to publish a St Mary of the Angels Cook Book as a seismic strengthening fundraiser. We welcome your participation by providing recipes for the book. We would like a range of recipes to reflect the diversity of our congregation. Please send in as many recipes as you like with your name by email to: [terrydodson@vodafone.co.nz](mailto:terrydodson@vodafone.co.nz) or by leaving them at the Parish office. We would like every family at SMOA to give a recipe.

### Catholic Social Services Christmas gifts

Can you help make a difference to someone at Christmas? Some of the families that Catholic Social Services works with over the year find Christmas hard so we try to make a difference for them by giving them some gifts to share with their children. If you can help, please bring along a small gift to Mass on Sunday and leave it in the basket. If you wrap it, please indicate on the exterior if it is for a boy or girl and the approximate age it would suit.

### St Mary of the Angels Christmas Cards

St Mary of the Angels Christmas Cards are now available for purchase after Mass on Sunday or from the Parish Office.

A6 \$15 for a pack of 12  
DLE \$15 for a pack of 12



### Mass has been offered for:

**Recently Deceased:** Romola O'Sullivan, Zilla Gini, Peter McLeavey

**Anniversaries:** Judy Gibson, Marjorie Fietsma, Su-yen Bok, William Jenkins, Frances Haughey, James Coyle, Daniel McKone, Veronica Rigby, Fr Peter Kiley sm, Michael McMullen, Melva Gould, Nora Johnson, Grace Smith, Joan O'Shea, James O'Neill, Matthew Stevens

**Prayers for the Sick:** Ricky McDonald, Bill Prior, Peter Aston, Johanna van Zijl, Richard Wright, Losalia Leo, Patricia Smyth, Maureen McDonald, John Foden, Joanna Veltman, Imelda Reeve, Jan Tuinman, Kath Simes, Kathleen Phelan, Jeanette Parker.



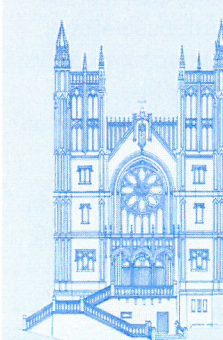
*Please remember in your prayers, these and the other sick of the Parish. If you know of anyone who is confined to their home or who needs a visit with Holy Communion, please contact Sister Frances at the Parish Office.*

**L.T. McGuinness LIMITED**  
BUILDING CONTRACTORS  
9 Francis Place,  
PO Box 9639, Wellington  
Phone (04) 384 8455 Fax (04) 801 8455  
Email: [ltm@mcguinness.co.nz](mailto:ltm@mcguinness.co.nz)

**Little Peckish Café**  
*Feeling a little peckish?*  
Dukes Arcade • Great food, coffee, service  
Office catering available  
Phone 499 7769 • Mobile 0274 461 650

**NEW WORLD WELLINGTON CITY**  
279 WAKEFIELD ST.  
OPEN 7 DAYS | 7AM - MIDNIGHT  
[WWW.WGTNCITYNEWWORLD.CO.NZ](http://WWW.WGTNCITYNEWWORLD.CO.NZ)

### ST MARY OF THE ANGELS EARTHQUAKE STRENGTHENING APPEAL



I would like to help preserve St Mary of the Angels Church

Name: \_\_\_\_\_

Address: \_\_\_\_\_

Email: \_\_\_\_\_

Tel: \_\_\_\_\_

My contribution will be made by:

☐ Direct Credit

☐ Cheque

☐ Cash

PLEASE SPECIFY AMOUNT

\$ \_\_\_\_\_

Donations can be sent to:  
Seismic Strengthening Fund  
St Mary of the Angels  
17 Boulcott St  
Wellington 6011

Bank Account Details:  
02-0536-0003242-23  
Bank of New Zealand  
Lambton Quay  
Wellington

St Mary of the Angels is registered with the Charities Commission. All donations are tax deductible and a receipt issued.