

## This Week's Readings

**First Reading** Acts 4:8-12  
*This is the only name by which we can be saved.*

**Second Reading** 1 Jn 3:1-2  
*We shall see God as he is.*

**Gospel** Jn 10:11-18  
*The good shepherd lays down his life for his sheep.*

## Next Week's Readings

**First Reading:** Acts 9:26-31  
**Psalm:** Psalm 21  
**Second Reading:** 1 Jn 3:18-24  
**Gospel:** Jn 15:1-8

## Last Sunday's Collection

Total	\$4,722
Parish Expenses	\$3,211
Support of House	\$1,511



## Planned Giving

If you would like to join the St Mary of the Angels Planned Giving Scheme please contact the Parish Office. A tax rebate of 33.3% may be claimed on all your contributions.

## Study Theology

Study Theology by distance or on-campus: Applications are invited for students wishing to study part-time GradDip in Theology from Good Shepherd College, Auckland, in Semester 2, 2015. Applications close 29 May 2015. Email admin@gsc.ac.nz for forms.

## Mass has been offered for:

**Recently Deceased:** Clare Dwyer, Rosalie Coyle, Des Brading, Wil Rutten

**Anniversaries:** Joseph Churchward, Czeslaw Tomaszuk, Jean Auld, Linton Eskridge, John Keating, Juing Jieng, Father Denis Mahony sm, Stewart Dickson, Mark Fitzgerald, David Butler, Ian Jones

**Prayers for the Sick:** Richard Wright, Fr Craig Larkin sm, Losalia Leo, Patricia Smyth, Maureen McDonald, John Foden, Joanna Veltman, Imelda Reeve, Jan Tuinman, Kath Symes, Kathleen Phelan



*Please remember in your prayers, these and the other sick of the Parish. If you know of anyone who is confined to their home or who needs a visit with Holy Communion, please contact Sister Frances at the Parish Office.*

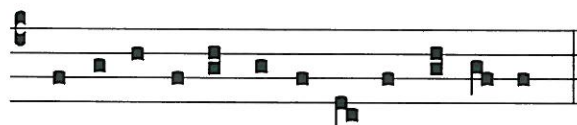
## Responsorial Psalm 117

**R. The stone rejected by the builders has become the corner-stone.**

Give thanks to the Lord for he is good,  
for his love has no end.  
It is better to take refuge in the Lord  
than to trust in men:  
it is better to take refuge in the Lord  
than to trust in princes. **R.**

I will thank you for you have given answer  
and you are my saviour.  
The stone which the builders rejected  
has become the corner stone.  
This is the work of the Lord,  
a marvel in our eyes. **R.**

Blessed in the name of the Lord  
is he who comes.  
We bless you from the house of the Lord;  
I will thank you for you have given answer  
and you are my saviour.  
Give thanks to the Lord for he is good;  
for his love has no end. **R.**



Alle-lu-ia, al-le-lu-ia, al-le-lu-ia.

## Taize Prayer

The Sisters of Compassion are offering Taize Prayer at the Island Bay Home of Compassion Chapel on Friday 1st May. The evening prayer is from 7.00 - 8.00 p.m. There is plenty of parking and it is the No. 1 bus route. You are most welcome.

## Prayer for Seismic Strengthening Work

Gracious God, Creator of the Universe,  
you made us in your own image and likeness.

You gave us wisdom and understanding,  
grateful hearts and creative minds.

We pray that our beautiful Church will be  
strengthened against the peril of earthquake  
through the generosity of parishioners,  
the community of Wellington and people  
throughout New Zealand.

We ask, Lord, that you abundantly bless those  
who have already donated funds,  
skill and expertise to this project.

May St Mary of the Angels Church  
be a symbol of a unified community that  
will gather to praise and thank you.

Mary our Mother, pray for us.

## Marriage Encounter

When was the last time you had a weekend away just for the two of you? Marriage Encounter is holding its weekend marriage enrichment experience on 15 - 17 May 2015 at the Magnificat Retreat Centre near Featherston. All couples deserve this special weekend which provides an atmosphere for couples to concentrate on each other in privacy, free of the usual distractions and pressures of modern life. To book on the weekend or obtain further information please phone Olivia

## St Mary's College

St Mary's College will be holding an open day on Wednesday 29 April from 8.30am-10.00am and 10.45-12.20. All welcome.

## SMAYACs Theology on Tap

April Theology on Tap: Fr Kevin Connors  
St Mary of the Angels Young Adults Group hosts Theology on Tap each month as a way of getting young adults together and learning more about our catholic faith. This month we have Fr Kevin Connors speaking. Fr Kevin is currently the Priest responsible for the chaplaincy at Victoria University and is also working towards completing his doctorate degree. Key details: - **Sunday 26th April 6.30-7.30pm**  
- Hotel Bristol (upstairs function room), 113-115 Cuba Street, Wellington  
- Further details: [www.facebook.com/SMOAYoungAdults](http://www.facebook.com/SMOAYoungAdults)

## Holy Hour

You are invited to a Holy Hour on Tuesday, 28 April beginning at 7.30 pm in the Cathedral chapel to pray for vocations to priesthood and religious life. This Holy Hour will include prayers, Scripture, times of silence and concluding with Benediction followed by supper.

## Guided Five Day Non-Residential Retreat

"Seen Through the Eyes of Mercy": An Ignatian retreat inspired by Pope Francis. Making use of his words, a favourite movie of his and his favourite artwork. Monday 13 July - Friday 17 July. 9.30am - 4.00pm each day. Cost \$200. Please bring your own lunch. Tea and coffee provided. VenMarist Spirituality Centre, 78 Hobson Street, Thorndon, Wellington. For further information and to register, phone (Pā Maria) 472 2734 or email [bgcummings@xtra.co.nz](mailto:bgcummings@xtra.co.nz).

## Adult Education in the Faith Ministry

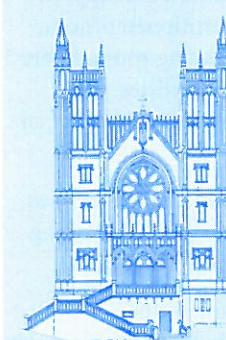
### First Level Course: An Introduction to Christian Spirituality

Venue: Pa Maria, 78 Hobson Street, 7.30 pm - 9.30 pm 30 April 2015  
Theme: A Brief History of Spirituality I Session 1 Jewish Antecedents and Jesus and the Apostolic Community

### Second Level Course (Restricted): The Incomparable God - the Testimony of Israel

Venue: Parish Hall, 5.30 pm - 7.30 pm 29 April 2015  
Theme: Israel's Unsolicited Testimony Session 15 E. Creation as God's Partner (Part 1) - E.1. A World Blessed and Fruitful; E.2. Creation in Jeopardy

## ST MARY OF THE ANGELS EARTHQUAKE STRENGTHENING APPEAL



I would like to help preserve St Mary of the Angels Church

Name:

Address:

Email:

Tel:

My contribution will be made by:

☐ Direct Credit

☐ Cheque

☐ Cash

PLEASE SPECIFY AMOUNT

\$

Donations can be sent to:  
Seismic Strengthening Fund  
St Mary of the Angels  
17 Boulcott St  
Wellington 6011

Bank Account Details:  
02-0536-0003242-23  
Bank of New Zealand  
Lambton Quay  
Wellington

St Mary of the Angels is registered with the Charities Commission. All donations are tax deductible and a receipt issued.

**LT**  
**McGuinness**  
BUILDING CONTRACTORS  
9 Francis Place.  
PO Box 9639, Wellington  
Phone (04) 384 8455 Fax (04) 801 8455  
Email: [ltm@mcguinness.co.nz](mailto:ltm@mcguinness.co.nz)

*Little Peckish*  
*Cafe*  
Feeling a little peckish?  
Dukes Arcade • Great food, coffee, service  
Office catering available  
Phone 499 7769 • Mobile 0274 461 650

**NEW WORLD**  
WELLINGTON CITY  
279 WAKEFIELD ST.  
OPEN 7 DAYS | 7AM - MIDNIGHT  
[WWW.WGTNCITYNEWWORLD.CO.NZ](http://WWW.WGTNCITYNEWWORLD.CO.NZ)



## For Your Diaries : 2015

### 26 April, Theology on Tap

Come listen to priests, religious and lay catholic leaders as they share their journey of faith. It is also an opportunity for you to meet and fellowship with other catholic youth from different parishes. Speaker: Fr Kevin Connors, Catholic Chaplain (VUW). Date/time: 26 April, 2015 (Sunday) at 6.30pm. Venue: Hotel Bristol, 131-133 Cuba Street, Te Aro, Wellington 6011.

### 28 April, Holy Hour

You are invited to a Holy Hour on Tuesday, 28 April beginning at 7.30 pm in the Cathedral chapel to pray for vocations to priesthood and religious life. This Holy Hour will include prayers, Scripture, times of silence and concluding with Benediction followed by supper.

### 29 April, St Mary's College Open Day

St Mary's College, Wellington, invites you to attend their open day on Wednesday 29 April from 8.30am - 10.00am and 10.45 - 12.20pm.

### 1 May, Taize Prayer

The Sisters of Compassion are offering Taize Prayer at the Island Bay Home of Compassion Chapel on Friday 1st May. The evening prayer is from 7.00 - 8.00 p.m. There is plenty of parking and it is the No. 1 bus route. You are most welcome.

### 15-17 May, Marriage Encounter

Marriage Encounter is holding its weekend marriage enrichment experience on 15 - 17 May 2015 at the Magnificat Retreat Centre near Featherston. All couples deserve this special weekend which provides an atmosphere for couples to concentrate on each other in privacy, free of the usual distractions and pressures of modern life. To book on the weekend or obtain further information please phone Olivia & Brett on 0800 362 686.

### 5-7 June, St Theresa's, Plimmerton 75 Jubilee

St Theresa's Catholic parish of Plimmerton, in the Wellington Archdiocese, will be celebrating their 75th jubilee on the weekend 5-7 June 2015. Anyone interested in celebrating with the parish is most welcome. To find out more go to [www.plimmertoncatholic.org.nz](http://www.plimmertoncatholic.org.nz) or phone the parish office 042331279.

### 13-17 July, Guided Five Day Non-Residential Retreat

"Seen Through the Eyes of Mercy": An Ignatian retreat inspired by Pope Francis. Making use of his words, a favourite movie of his and his favourite artwork. Monday 13 July - Friday 17 July. 9.30am - 4.00pm each day. Cost \$200. Please bring your own lunch. Tea and coffee provided. Venue: Pā Maria Marist Spirituality Centre, 78 Hobson Street, Thorndon, Wellington. For further information and to register, phone (04) 472 2734 or email [bgcumplings@xtra.co.nz](mailto:bgcumplings@xtra.co.nz).

**WEST PLAZA HOTEL**  
LOCATION • COMFORT • STYLE

### WEEKEND SPECIAL \$135

One night's stay & cooked breakfast for two

### BOOK NOW

*\*Subject to availability*

[westplaza.co.nz](http://westplaza.co.nz) / P 0800 731 444  
E [reservations@westplaza.co.nz](mailto:reservations@westplaza.co.nz)  
110 Wakefield St, Wellington

This newsletter is kindly sponsored by:

**Michael Burrowes**  
of Burrowes and Company  
Barristers and Solicitors  
phone (04) 473 7733

**BURROWES**  
and Company

Barristers and Solicitors

**Books \* DVD's \* Statues \* Gifts**  
**Rosaries \* Missals \* Bibles \* Music**  
**Teaching \* Baptism \* Confirmation**  
**First Holy Communion**  
**Bible Study \* Advent & Christmas**  
**www.christiansupplies.co.nz**

**Pleroma**  
**Christian Supplies**  
Specialists In Catholic Product



Is dealing with a  
**Locally Owned**  
**Funeral Director**  
important to you?



**Wellington**  
56 Onepu Road, Kilbirnie  
Telephone 387-8301  
Email: [harbour@funeral-link.co.nz](mailto:harbour@funeral-link.co.nz)  
[www.harbourcityfunerals.co.nz](http://www.harbourcityfunerals.co.nz)

## A LEGACY OF FAITH



Remembering St Mary of the Angels in your will provides an ideal opportunity to make a statement of your faith and to give resources that will support your Church for years to come. Please contact the Parish Office for further details. Phone (04) 473 8074.

### Quality Te Aro Offices

Great location close to Cafe district  
Busy arterial road  
Air conditioned  
Car parking available

Office suites available at an affordable price. Semi-serviced suites (approx 18sqm) that are fully furnished. There is also a company floor area (approx 200sqm) with 5x partitioned offices, Board room and Meeting room. Shared kitchen and shower facilities. Car parking available in the building at an additional rate.

This is a must see for new businesses on a budget. Earthquake Engineering Evaluation IEP Report NBS 80 %

Contact by e-mail for further information: [mariabaldock@gmail.com](mailto:mariabaldock@gmail.com)

# The Angelus

## St Mary of the Angels Parish

**Church and Presbytery**  
**17 Boulcott Street**  
**Wellington Central**  
**Telephone: 04 473 8074**  
**Parish website: [www.smoa.org.nz](http://www.smoa.org.nz)**

*St Mary of the Angels is a diverse community which seeks to praise and thank God in a place of calm and beauty and strives to be Christ alive in Central Wellington*

### MASS TIMES

#### Sunday

7am *St Mary of the Angels Parish Hall*  
9am *Sacred Heart Cathedral*  
12pm *St John's Presbyterian Church*  
5pm *St Joseph's Church, Mt Victoria*

#### Monday to Friday

*St Mary of the Angels Parish Hall*  
7:30am, 12:05pm & 5:15pm

#### Saturday

11am *St Mary of the Angels Parish Hall*

#### SACRAMENT OF ANOINTING

*St Mary of the Angels Parish Hall*  
11am Mass 4th Saturday of each month

#### ADORATION

*St Mary of the Angels Parish Hall*  
**Monday to Friday** 6:45am - 7:30am  
**Friday** 11:00am-12:00pm

#### RECONCILIATION

*St Mary of the Angels Presbytery*  
**Monday to Thursday** 11:30am-12:00pm  
12:30pm - 1:00pm  
4:30pm - 5:00pm

#### Friday

11:00am-12:00pm  
12:30pm - 1:00pm  
4:30pm - 5:00pm

#### Saturday

10:30am-11:00am  
4:00pm - 5:00pm

#### Parish Priest

Fr Barry Scannell SM  
[smoapp@xtra.co.nz](mailto:smoapp@xtra.co.nz)

#### Assistant Priest

Fr Carl Telford SM

#### Adult Education

Fr Michael Young SM

#### Pastoral Worker

Sr Frances Gibbs CSB

#### Director of Music

Robert Oliver  
[robert.oliver@paradise.net.nz](mailto:robert.oliver@paradise.net.nz)

#### Parish Accountant

Jeanette Temelo  
[smoamanager@xtra.co.nz](mailto:smoamanager@xtra.co.nz)

#### Parish Office

[smoaooffice@xtra.co.nz](mailto:smoaooffice@xtra.co.nz)

## 26th April 2015, Fourth Sunday of Easter - Year B

### Public Holiday

Tomorrow Monday 27 April is a public holiday. There will be only one Mass in the Parish Hall at 9am.

### Tax Receipts

Tax receipts for the last financial year are available at all Masses today. Please ensure we have your correct address. If you do not collect your receipt today, it will be posted to you in the coming week.

### Will There be Anyone to Follow?

A couple of weeks ago I attended a gathering of Marist priests in New Zealand under the age of 65. There were 31 of us at this meeting. It may interest you that:

14 were aged between 60 and 65

13 were aged between 50 and 60

4 were aged between 40 and 50

All of these priests work in a wide variety of ministries - youth and schools, parishes, Maori pastoral care, communications, seminary formation, lecturers etc. However, the reality is that we are getting older and we cannot as a Province sustain in the future all the works we are presently engaged in.

We have 4 fine young men currently in formation at the Marist Seminary in Auckland. However, that is not enough to replace those of us who in the next 10 years or so will not have the energy and perhaps the health to do the things we are engaged in now.

The Church and the Society of Mary need vocations. One of the highlights of our gathering was the influence and respect we have for those Marists who inspired and encouraged us as young men to consider a religious vocation.

If there are any young men reading this I encourage you to consider the possibility that God may be calling you to serve the Church as a priest. It is a worthwhile and fulfilling vocation. Yes, it takes courage in our secular world to be different - to discern what God is asking of me. However, the Bishops and the Provincials of religious orders need generous and faith filled young men and women to answer the need we have in the New Zealand Church for priests and religious.

Why not talk with someone about it?

Father Barry Scannell sm  
Parish Priest