

## This Week's Readings

**First Reading** Samuel 7:1-5. 8-12. 14. 16  
*The kingdom of David will be established for ever in the sight of the Lord.*

**Second Reading** Romans 16:25-27  
*The mystery kept secret for endless ages is now revealed.*

**Gospel Reading** Luke 1:26-38  
*You will conceive and bear a son.*

## Next Week's Readings

**First Reading** Genesis 15:1-6. 21:1-3  
**Psalm** 104  
**Second Reading** Hebrews 11:8. 11-12. 17-19  
**Gospel Reading** Luke 2:22-40

## Last Sunday's Collection

Total	\$4,909
Parish Expenses	\$3,338
Support of House	\$1,571



## St Mary of the Angels Christmas Cards

St Mary of the Angels Christmas Cards are now available for purchase either after Mass on Sunday or from the Parish Office.

A6 \$15 for a pack of 12  
DLE \$15 for a pack of 12



TO KEEP UP TO DATE WITH EVENTS AROUND THE ARCHDIOCESE VISIT [WWW.WN.CATHOLIC.ORG.NZ](http://WWW.WN.CATHOLIC.ORG.NZ)

## Mass has been offered for:

**Recently Deceased:** Marjorie Feitsma, Fred Scoon, Su-Yen Bok

**Anniversaries:** Edna Mary Jacobsen, Brian Johnson, William Jenkins, Frances Haughey, James Coyle, Daniel McKone, Maurice O'Brien, Janina Knapp, Fr George Duggan sm, Phyllis Clifford, Kura Turner, James Glover, Dianna Bartram, Marie Giles, Paul Giles

**Prayers for the Sick:** Paul Griffiths, Pat Perkins, Graham Townsley, Richard Wright, Fr Craig Larkin sm, Losalia Leo, Patricia Smyth, Maureen McDonald, John Foden, Joanna Veltman, Imelda Reeve, Jan Tuinman, Kath Symes, Dulcie Campbell, Kathleen Phelan



*Please remember in your prayers, these and the other sick of the Parish. If you know of anyone who is confined to their home or who needs a visit with Holy Communion, please contact Sister Frances at the Parish Office.*

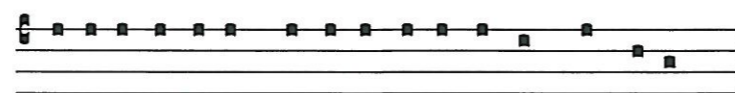
## Responsorial Psalm 88

**R. For ever I will sing the goodness of the Lord.**

I will sing for ever of your love, O Lord; through all ages my mouth will proclaim your truth. Of this I am sure, that your love lasts for ever, that your truth is firmly established as the heavens. **R.**

'I have made a covenant with my chosen one; I have sworn to David my servant: I will establish your dynasty for ever and set up your throne through all ages.' **R.**

He will say to me: 'You are my father, my God, the rock who saves me.' I will keep my love for him always; for him my covenant shall endure. **R.**



Mi-se-tri-cordi- as Domi-ni in aeternum can tabo.-

*The mercies of the Lord I will sing for ever.*

## Sacramental Gifts

Looking for a Sacramental Gift? The John Paul II Centre for Life 6 Parumoana St, Porirua, has a small selection of religious articles (including rosaries) for sale. Open Fridays 12pm to 2pm.

## Planned Giving

If you would like to join the St Mary of the Angels Planned Giving Scheme please contact the Parish Office. A tax rebate of 33.3% may be claimed on all your contributions.

## Prayer for Seismic Strengthening Work

Gracious God, Creator of the Universe, you made us in your own image and likeness.

You gave us wisdom and understanding, grateful hearts and creative minds.

We pray that our beautiful Church will be strengthened against the peril of earthquake through the generosity of parishioners, the community of Wellington and people throughout New Zealand.

We ask, Lord, that you abundantly bless those who have already donated funds, skill and expertise to this project.

May St Mary of the Angels Church be a symbol of a unified community that will gather to praise and thank you.

Mary our Mother, pray for us.

## Palliser Viols Concert

Palliser Viols with Pepe Becker will be presenting a programme of 5-part music by Philips, Ferrabosco, and Dowland, together with consort songs by Byrd and Anon, including some Christmas songs. The programme starts at 4:00pm and will finish by 5:30 and will be held on December 21st, in the bright and airy surroundings of the new hall at All Saints Church, Hataitai. The concert will be the group's third performance, and second this year. All welcome to come and enjoy this very special repertoire, so rarely heard in these parts.

## St Vincent de Paul Pregnancy Assistance

Do you know someone who may need clothing, bedding, cloth nappies or a bassinet? Pregnancy Assistance gives out free baby items to pregnant women and new parents on low wages or in need. Phone 389 7122 for more information, or come in and ask for us at the Vinnie's shop. 207 Riddiford St, Newtown. This service is available from 10am - 2pm, Wednesday to Friday. St Vincent de Paul also welcomes donations of baby clothes, and other items.

## Adult Education in the Faith Ministry

The spirituality course, "An Introduction to Christian Spirituality" (CSp101SMoA) will go into recess until it begins again on Thursday, 29 January 2015.

The second level spirituality course (CSp201SMoA) is in recess and will resume on Wednesday, 4 February 2015.

## St Mary of the Angels Choir

The St Mary of the Angels Choir is seeking new members. The choir sings Gregorian chant and polyphony at the 12pm Mass each Sunday. If you would like to join the choir please contact Robert Oliver on 934 2296 or email [brt.oliver@paradise.net.nz](mailto:brt.oliver@paradise.net.nz) or say hello to one of the friendly choir members after Mass. There is no audition.

## Peace in the Middle East

All of us are aware of the desperate situation of many people in the Middle East who are suffering from the effects of war. Caritas have issued a press release which can be found on their website: [www.caritas.org](http://www.caritas.org) We are asked to not only pray for peace in the Middle East but also to respond to the Caritas appeal.

## Advent Readings Study Group

You are invited to participate in a group to reflect on the Sunday Bible Readings of Advent (and Christmas), each Monday of December, 6-7pm in the SMOA Presbytery Meeting Room. If possible, please bring a copy of the Bible. Enquiries: Neil Coup 021896924.

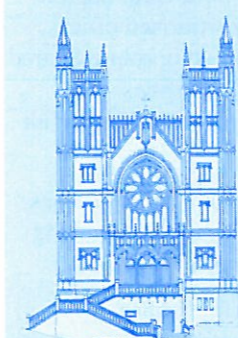
## Catholic Social Services Christmas Gifts

Can you help make a difference to someone at Christmas? Some of the families that Catholic Social Services works with over the year find Christmas hard so we try to make a difference for them by giving them some gifts to share with their children. If you can help, please bring along a small gift to Mass on Sunday and leave it in the basket. If you wrap it, please indicate on the outside if it is for a boy or girl and approximately the age it would suit.

## Catholic Discipleship College

The Catholic Discipleship College is now accepting applications for students for 2015. We offer a nine month, live-in course in Auckland beginning in February. Visit [www.cdc.ac.nz](http://www.cdc.ac.nz) or contact Anne Marie at [info@cdc.ac.nz](mailto:info@cdc.ac.nz) or (09) 480 0548.

## ST MARY OF THE ANGELS EARTHQUAKE STRENGTHENING APPEAL



I would like to help preserve St Mary of the Angels Church

Name:

Address:

Email:

Tel:

My contribution will be made by:

☐ Direct Credit

☐ Cheque

☐ Cash

PLEASE SPECIFY AMOUNT

\$

Donations can be sent to:  
Seismic Strengthening Fund  
St Mary of the Angels  
17 Boulcott St  
Wellington 6011

Bank Account Details:  
02-0536-0003242-23  
Bank of New Zealand  
Lambton Quay  
Wellington

St Mary of the Angels is registered with the Charities Commission. All donations are tax deductible and a receipt issued.

**LT**  
**McGuinness**  
BUILDING CONTRACTORS  
9 Francis Place,  
PO Box 9639, Wellington  
Phone (04) 384 8455 Fax (04) 801 8455  
Email: [ltm@mcguinness.co.nz](mailto:ltm@mcguinness.co.nz)

*Little Peckish*  
**Cafe**  
*Feeling a little peckish?*  
Dukes Arcade • Great food coffee, service  
Office catering available  
Phone 499 7769 • Mobile 0274 461 650

**NEW WORLD**  
**WELLINGTON CITY**  
279 WAKEFIELD ST.  
OPEN 7 DAYS | 7AM - MIDNIGHT  
[WWW.WGTNCITYNEWWORLD.CO.NZ](http://WWW.WGTNCITYNEWWORLD.CO.NZ)

## For Your Diaries : 2014

### 21 December, Palliser Viols Concert

Palliser Viols with Pepe Becker will be presenting a programme of 5-part music by Philips, Ferrabosco, and Dowland, together with consort songs by Byrd and Anon, including some Christmas songs. The programme starts at 4:00pm and will finish by 5:30 and will be held on December 21st, in the bright and airy surroundings of the new hall at All Saints Church, Hataitai. The concert will be the group's third performance, and second this year. All welcome to come and enjoy this very special repertoire, so rarely heard in these parts.

### 22 December, Advent Readings Study Group

You are invited to participate in a group to reflect on the Sunday Bible Readings of Advent [and Christmas], each Monday of December, 6-7pm in the SMOA Presbytery Meeting Room. If possible, please bring a copy of the Bible. Enquiries: Neil Coup 021896924.

### 2-11 January, Hearts Aflame Summer Camp

Hearts Aflame is a ten day Catholic summer school that is open to young adults aged 18 to 35. This year Hearts Aflame will take place at Nga Tawa Diocesan School, Marton. For more information or to register, visit [www.heartsaflame.org.nz](http://www.heartsaflame.org.nz)

### 20-24 January, LifeTeen Summer Camp

The first ever LifeTeen Camp will take place at Forest lakes, Otaki in January 2015. The camp is for 13-18 year olds and is full of faith, friendship and activities. For more information or to register visit [www.wellington.lifeteen.org.nz](http://www.wellington.lifeteen.org.nz)

### 14-15 February, Engaged Encounter

Engaged Encounter is a weekend experience for couples intending to be married. Weekends in 2015 are 14th & 15th February (Valentine's Weekend), 25th & 26th July and 14th & 15th November. Registrations close 2 weeks before. Venue: Pa Maria, 78 Hobson Street, Thorndon, Wellington.

For more details go to the website at <http://www.ceewellington.org.nz> or phone Kate & Simon Olsen Telephone (+64 4) 801 6192, or email [simonolsen@gmail.com](mailto:simonolsen@gmail.com)

**Traditional Latin Mass** will be celebrated at 12.30pm on Christmas Day at Sacred Heart Cathedral (Blessed Sacrament Chapel.) Devotions: Rosary & Carols from 12 noon. Enquiries: Neil Coup 021896924.



**WEST PLAZA HOTEL**  
LOCATION • COMFORT • STYLE

### WEEKEND SPECIAL \$135

One night's stay & cooked breakfast for two

#### BOOK NOW

*\*Subject to availability*

[westplaza.co.nz](http://westplaza.co.nz) / P 0800 731 444  
E [reservations@westplaza.co.nz](mailto:reservations@westplaza.co.nz)  
110 Wakefield St, Wellington

This newsletter is kindly sponsored by:

**Michael Burrowes**  
of Burrowes and Company  
Barristers and Solicitors  
phone (04) 473 7733

**BURROWES**  
and Company

Barristers and Solicitors

**Books \* DVD's \* Statues \* Gifts**  
**Rosaries \* Missals \* Bibles \* Music**  
**Teaching \* Baptism \* Confirmation**  
**First Holy Communion**  
**Bible Study \* Advent & Christmas**  
**www.christiansupplies.co.nz**

**Pleroma**  
**Christian Supplies**  
Specialists In Catholic Product



Is dealing with a  
**Locally Owned**  
**Funeral Director**  
important to you?

**Harbour City**

FUNERAL HOME

Wellington  
56 Onepu Road, Kilbirnie  
Telephone 387-8301  
Email: [harbour@funeral-link.co.nz](mailto:harbour@funeral-link.co.nz)  
[www.harbourcityfunerals.co.nz](http://www.harbourcityfunerals.co.nz)

## A LEGACY OF FAITH



Remembering St Mary of the Angels in your will provides an ideal opportunity to make a statement of your faith and to give resources that will support your Church for years to come. Please contact the Parish Office for further details. Phone (04) 473 8074.

## Quality Te Aro Offices

5-7 Vivian Street, Wellington

Great location close to Cafe district  
Busy arterial road  
Air conditioned  
Car parking available

Office suites available at an affordable price. Semi-serviced suites (approx 18sqm) that are fully furnished. There is also a company floor area (approx 200sqm) with 5x partitioned offices, Board room and Meeting room. Shared kitchen and shower facilities. Car parking available in the building at an additional rate.

This is a must see for new businesses on a budget. Earthquake Engineering Evaluation IEP Report NBS 80 %

Contact by e-mail for further information: [mariabaldock@gmail.com](mailto:mariabaldock@gmail.com)

# The Angelus

St Mary of the Angels Parish

### Church and Presbytery

17 Boulcott Street

Wellington Central

Telephone: 04 473 8074

Parish website: [www.smoa.org.nz](http://www.smoa.org.nz)

*St Mary of the Angels is a diverse community which seeks to praise and thank God in a place of calm and beauty and strives to be Christ alive in Central Wellington*

### MASS TIMES

#### Sunday

7am St Mary of the Angels Parish Hall

9am Sacred Heart Cathedral

12pm St John's Presbyterian Church

5pm St Joseph's Church, Mt Victoria

#### Monday to Friday

St Mary of the Angels Parish Hall

7:30am, 12:05pm & 5:15pm

#### Saturday

11am St Mary of the Angels Parish Hall

#### SACRAMENT OF ANOINTING

St Mary of the Angels Parish Hall

11am Mass 4th Saturday of each month

#### ADORATION

St Mary of the Angels Parish Hall

Monday to Friday 6:45am - 7:30am

Friday 11:00am-12:00pm

#### RECONCILIATION

St Mary of the Angels Presbytery

Monday to Thursday 11:30am-12:00pm

12:30pm - 1:00pm

4:30pm - 5:00pm

#### Friday

11:00am-12:00pm

12:30pm - 1:00pm

4:30pm - 5:00pm

#### Saturday

10:30am-11:00am

4:00pm - 5:00pm

#### Parish Priest

Fr Barry Scannell SM

[smoapp@xtra.co.nz](mailto:smoapp@xtra.co.nz)

#### Assistant Priest

Fr Carl Telford SM

#### Adult Education

Fr Michael Young SM

#### Pastoral Worker

Sr Frances Gibbs CSB

#### Director of Music

Robert Oliver

[robert.oliver@paradise.net.nz](mailto:robert.oliver@paradise.net.nz)

#### Parish Accountant

Jeanette Temelo

[smoamanager@xtra.co.nz](mailto:smoamanager@xtra.co.nz)

#### Parish Office

[smoaoffice@xtra.co.nz](mailto:smoaoffice@xtra.co.nz)

## 21 December 2014, Fourth Sunday of Advent - Year B

### Thank You

This will be the final Angelus for 2014 and I would like to take this opportunity of sincerely thanking so many people who have contributed so much to St Mary of the Angels over the past year.

When I look back over the year it has been a very busy one. We have settled into the routine of having to celebrate our Sunday Masses at 4 different venues. The Parish Hall has become our 'chapel' where weekday Masses are celebrated. The meeting rooms in the Presbytery are shared by many groups who formerly used the Hall or the Crypt under the Church for their gatherings. We now celebrate the sacrament of reconciliation each day in the Presbytery.

In August we launched the Fundraising for the seismic strengthening of the Church at Parliament. Many people have responded with generosity and have contributed funds. We urgently need more generous donors before March 2015 to ensure that we can reach 1/3 of the total amount of the project (i.e. \$3.1 million) in order to qualify for the present round of Lottery funding. Please give this prayerful consideration because if we miss this round of funding it will be another year before we can apply again.

The plans have been signed off for the strengthening of the Church. Resource and Building Consent have been received. We need to begin work but that requires more funds. Ask your friends and family if they have considered making a donation to this most important project. All donations are tax deductible.

Thank you to everyone who has made a contribution to the Parish throughout the course of this year. On behalf on the Pastoral Team I hope you have a very happy and blessed Christmas.

### Farewell

As indicated in last week's Angelus, Father Tom has been appointed to the Parish of Addington next year. We will farewell him at a luncheon in the Parish Hall on Sunday 25 January at 1.15pm. We need to know the numbers attending for catering purposes so please advise the Parish Office.

If you wish to contribute towards a Parish Gift for Father Tom you are welcome to do so. Please give it to the Office, to Sister Frances or Father Barry.

*Father Barry Scannell s.m.*

*Parish Priest*