

## For Your Diaries : 2014

### 15 December, Advent Readings Study Group

You are invited to participate in a group to reflect on the Sunday Bible Readings of Advent [and Christmas], each Monday of December, 6-7pm in the SMOA Presbytery Meeting Room. If possible, please bring a copy of the Bible. Enquiries: Neil Coup 021896924.

### 17 December, Carols with the Angels

Carols with the Angels is on Wednesday 17th December, at 7.30pm in the Salvation Army Citadel Hall, 92 Vivian St. Please come and join in this special celebration as we prepare for the birth of Christ.

### 18 December, Joshua Catholic Men's Fellowship End Of Year Mass

We extend a warm invitation to all men and woman, friends and family to come, celebrate and join us for our end of year celebration Mass. Mass will be held at Sacred Heart Cathedral on Thursday 18th December at 7.30 pm. Refreshments afterwards.

### 21 December, Palliser Viols Concert

Palliser Viols with Pepe Becker will be presenting a programme of 5-part music by Philips, Ferrabosco, and Dowland, together with consort songs by Byrd and Anon, including some Christmas songs. The programme starts at 4:00pm and will finish by 5:30 and will be held on December 21st, in the bright and airy surroundings of the new hall at All Saints Church, Hataitai. The concert will be the group's third performance, and second this year. All welcome to come and enjoy this very special repertoire, so rarely heard in these parts.

### 2-11 January, Hearts Aflame Summer Camp

Hearts Aflame is a ten day Catholic summer school that is open to young adults aged 18 to 35. This year Hearts Aflame will take place at Nga Tawa Diocesan School, Marton. For more information or to register, visit [www.heartsaflame.org.nz](http://www.heartsaflame.org.nz)

### 20-24 January, LifeTeen Summer Camp

The first ever LifeTeen Camp will take place at Forest lakes, Otaki in January 2015. The camp is for 13-18 year olds and is full of faith, friendship and activities. For more information or to register visit [www.wellington.lifeteen.org.nz](http://www.wellington.lifeteen.org.nz)

### 14-15 February, Engaged Encounter

Engaged Encounter is a weekend experience for couples intending to be married. Weekends in 2015 are 14th & 15th February (Valentine's Weekend), 25th & 26th July and 14th & 15th November. Registrations close 2 weeks before. Venue: Pa Maria, 78 Hobson Street, Thorndon, Wellington. For more details go to the website at <http://www.ceewellington.org.nz> or phone Kate & Simon Olsen Telephone (+64 4) 801 6192

**Traditional Latin Mass** is celebrated each Sunday at 12.30pm at Pa Maria, 78 Hobson Street, Thorndon. Enquiries: Neil Coup 021 896 924

**WEST PLAZA HOTEL**  
LOCATION • COMFORT • STYLE

### WEEKEND SPECIAL \$135

One night's stay &  
cooked breakfast for two

#### BOOK NOW

*\*Subject to availability*

[westplaza.co.nz](http://westplaza.co.nz) / P 0800 731 444

E [reservations@westplaza.co.nz](mailto:reservations@westplaza.co.nz)

110 Wakefield St, Wellington

This newsletter is kindly sponsored by:

Michael Burrowes  
of Burrowes and Company  
Barristers and Solicitors  
phone (04) 473 7733

**BURROWES**  
and Company

Barristers and Solicitors

Books \* DVD's \* Statues \* Gifts  
Rosaries \* Missals \* Bibles \* Music  
Teaching \* Baptism \* Confirmation  
First Holy Communion  
Bible Study \* Advent & Christmas

[www.christiansupplies.co.nz](http://www.christiansupplies.co.nz)

**Pleroma**  
**Christian Supplies**  
Specialists In Catholic Product



Is dealing with a  
**Locally Owned  
Funeral Director**  
important to you?

**Harbour City**

FUNERAL HOME

#### Wellington

56 Onepu Road, Kilbirnie  
Telephone 387-8301

Email: [harbour@funeral-link.co.nz](mailto:harbour@funeral-link.co.nz)  
[www.harbourcityfunerals.co.nz](http://www.harbourcityfunerals.co.nz)

## A LEGACY OF FAITH



Remembering St Mary of the Angels in your will provides an ideal opportunity to make a statement of your faith and to give resources that will support your Church for years to come. Please contact the Parish Office for further details. Phone (04) 473 8074.

## Quality Te Aro Offices

5-7 Vivian Street, Wellington

Great location close to Cafe district  
Busy arterial road  
Air conditioned  
Car parking available

Office suites available at an affordable price. Semi-serviced suites (approx 18sqm) that are fully furnished. There is also a company floor area (approx 200sqm) with 5x partitioned offices, Board room and Meeting room. Shared kitchen and shower facilities. Car parking available in the building at an additional rate.

This is a must see for new businesses on a budget. Earthquake Engineering Evaluation IEP Report NBS 80 %

Contact by e-mail for further information: [mariabaldock@gmail.com](mailto:mariabaldock@gmail.com)

# The Angelus

## St Mary of the Angels Parish

### Church and Presbytery

17 Boulcott Street

Wellington Central

Telephone: 04 473 8074

Parish website: [www.smoa.org.nz](http://www.smoa.org.nz)

*St Mary of the Angels is a diverse community which seeks to praise and thank God in a place of calm and beauty and strives to be Christ alive in Central Wellington*

### MASS TIMES

#### Sunday

7am *St Mary of the Angels Parish Hall*  
9am *Sacred Heart Cathedral*  
12pm *St John's Presbyterian Church*  
5pm *St Joseph's Church, Mt Victoria*

#### Monday to Friday

*St Mary of the Angels Parish Hall*  
7:30am, 12:05pm & 5:15pm

#### Saturday

11am *St Mary of the Angels Parish Hall*

#### SACRAMENT OF ANOINTING

*St Mary of the Angels Parish Hall*  
11am Mass 4th Saturday of each month

#### ADORATION

*St Mary of the Angels Parish Hall*  
Monday to Friday 6:45am - 7:30am  
Friday 11:00am-12:00pm

#### RECONCILIATION

*St Mary of the Angels Presbytery*  
Monday to Thursday 11:30am-12:00pm  
12:30pm - 1:00pm  
4:30pm - 5:00pm

#### Friday

11:00am-12:00pm  
12:30pm - 1:00pm  
4:30pm - 5:00pm

#### Saturday

10:30am-11:00am  
4:00pm - 5:00pm

#### Parish Priest

Fr Barry Scannell SM  
[smoapp@xtra.co.nz](mailto:smoapp@xtra.co.nz)

#### Assistant Priest

Fr Carl Telford SM

#### Adult Education

Fr Michael Young SM

#### Pastoral Worker

Sr Frances Gibbs CSB

#### Director of Music

Robert Oliver  
[robert.oliver@paradise.net.nz](mailto:robert.oliver@paradise.net.nz)

#### Parish Accountant

Jeanette Temelo  
[smoamanager@xtra.co.nz](mailto:smoamanager@xtra.co.nz)

#### Parish Office

[smooffice@xtra.co.nz](mailto:smooffice@xtra.co.nz)

## 14 December 2014, Third Sunday of Advent - Year B

### Carols with the Angels

Our annual celebration of 'Carols with the Angels' will be held this Wednesday evening 17 December at 7.30pm at the Salvation Army Cidael in Vivian Street. I hope that parishioners will support this very important event. Last Christmas was the first time that the Carols were not held in St Mary of the Angels Church because of its closure in July 2013. There was a disappointing attendance from St Mary of the Angels parishioners at last year's event. The Salvation Army have been very generous to us over the years by playing and singing in our Church and now their generosity has extended to inviting us to use their facilities for the Carols again this year. I hope that all parishioners will give this careful thought and support our Carol service this week.

### Ordination to Priesthood

Yesterday I attended the ordination to priesthood of Deacon Philip Bennenbroek s.m., at Pukekohe. Father Philip is only the third Marist in New Zealand to be ordained in the past 13 years. Our last ordination was four years ago. Philip lived with us in the St Mary of the Angels Marist community in 2012 when he had a pastoral year at St Patrick's College.

Philip's ordination is a great joy for the Society of Mary and for the Church. However, it once again highlights how we must pray and support vocations to priesthood. The average age of Marists in New Zealand is now 73. If we continue to have only a small number of ordinations over the next few years it is not difficult to work out that there will be only a few priests to undertake the work of the Society of Mary.

On a brighter note we have three young men joining the Marist Seminary in Auckland next year.

Please continue to pray that many more young men will offer themselves for priesthood and religious life in the Church.

*Father Barry Scannell s.m.*  
Parish Priest



## This Week's Readings

**First Reading** Isaiah 61:1-2. 10-11

*I exult for joy in the Lord.*

**Second Reading** 1 Thess 5:16-24

*May you all be kept blameless, spirit, soul and body, for the coming of our Lord Jesus Christ.*

**Gospel Reading** John 1:6-8. 19-28

*There stands among you, unknown to you, the one who is coming after me.*

## Next Week's Readings

**First Reading** Samuel 7:1-5. 8-12. 14. 16

**Psalm** 88

**Second Reading** Romans 16:25-27

**Gospel Reading** Luke 1:26-38

## Last Sunday's Collection

Total	\$5,039
Parish Expenses	\$3,427
Support of House	\$1,612



## St Mary of the Angels Christmas Cards

St Mary of the Angels Christmas Cards are now available for purchase either after Mass on Sunday or from the Parish Office.

A6 \$15 for a pack of 12  
DLE \$15 for a pack of 12



TO KEEP UP TO DATE WITH EVENTS AROUND THE ARCHDIOCESE VISIT [WWW.WN.CATHOLIC.ORG.NZ](http://WWW.WN.CATHOLIC.ORG.NZ)

## Mass has been offered for:

**Recently Deceased:** Marjorie Feitsma, Fred Scoon, Su-Yen Bok

**Anniversaries:** Brian Johnson, William Jenkins, Frances Haughey, James Coyle, Daniel McKone, Maurice O'Brien, Janina Knapp, Fr George Duggan sm, Phyllis Clifford, Kura Turner, James Glover, Dianna Bartram, Marie Giles, Paul Giles

**Prayers for the Sick:** Paul Griffiths, Pat Perkins, Graham Townsley, Richard Wright, Fr Craig Larkin sm, Losalia Leo, Patricia Smyth, Maureen McDonald, John Foden, Joanna Veltman, Imelda Reeve, Jan Tuinman, Kath Symes, Dulcie Campbell, Kathleen Phelan, Fr Kevin O'Donoghue sm



*Please remember in your prayers, these and the other sick of the Parish. If you know of anyone who is confined to their home or who needs a visit with Holy Communion, please contact Sister Frances at the Parish Office.*



9 Francis Place,  
PO Box 9639, Wellington  
Phone (04) 384 8455 Fax (04) 801 8455  
Email: [ltm@mcguinness.co.nz](mailto:ltm@mcguinness.co.nz)



*Feeling a little peckish?*  
Dukes Arcade - Great food, coffee, service  
Office catering available  
Phone 499 7769 • Mobile 0274 461 650



**NEW WORLD  
WELLINGTON CITY**  
279 WAKEFIELD ST.  
OPEN 7 DAYS | 7AM - MIDNIGHT  
[WWW.WGTNCITYNEWWORLD.CO.NZ](http://WWW.WGTNCITYNEWWORLD.CO.NZ)

## Responsorial Psalm Luke 1:46-50. 53-54

**R. My soul rejoices in my God.**

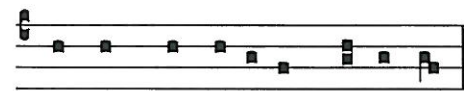
My soul glorifies the Lord,  
my spirit rejoices in God, my saviour.  
He looks on his servant in her nothingness;  
henceforth all ages will call me blessed. **R.**

The Almighty works marvels for me.  
Holy his name!

His mercy is from age to age,  
on those who fear him. **R.**

He fills the starving with good things,  
sends the rich away empty.

He protects Israel, his servant,  
remembering his mercy. **R.**



Gaudens gaudebo in Domi-no.-

*Rejoicing I rejoice in God*

## Study Theology

Applications are invited for students wishing to study part-time GradDip in Theology from Good Shepherd College, Auckland, in 2015. Study is available both on-campus or by distance. Applications close Dec 15. Please email [admin@gsc.ac.nz](mailto:admin@gsc.ac.nz) for forms.

## Planned Giving

If you would like to join the St Mary of the Angels Planned Giving Scheme please contact the Parish Office. A tax rebate of 33.3% may be claimed on all your contributions.

## Prayer for Seismic Strengthening Work

Gracious God, Creator of the Universe,  
you made us in your own image and likeness.

You gave us wisdom and understanding,  
grateful hearts and creative minds.

We pray that our beautiful Church will be strengthened against the peril of earthquake through the generosity of parishioners, the community of Wellington and people throughout New Zealand.

We ask, Lord, that you abundantly bless those who have already donated funds, skill and expertise to this project.

May St Mary of the Angels Church be a symbol of a unified community that will gather to praise and thank you.

Mary our Mother, pray for us.

## Palliser Viols Concert

Palliser Viols with Pepe Becker will be presenting a programme of 5-part music by Philips, Ferrabosco, and Dowland, together with consort songs by Byrd and Anon, including some Christmas songs. The programme starts at 4:00pm and will finish by 5:30 and will be held on December 21st, in the bright and airy surroundings of the new hall at All Saints Church, Hataitai. The concert will be the group's third performance, and second this year. All welcome to come and enjoy this very special repertoire, so rarely heard in these parts.

## Advent Readings Study Group

You are invited to participate in a group to reflect on the Sunday Bible Readings of Advent [and Christmas], each Monday of December, 6-7pm in the SMOA Presbytery Meeting Room. If possible, please bring a copy of the Bible. Enquiries: Neil Coup 021896924.

## Wool Wanted

Wool (any colour!) to be knitted into small woollen items for Catholic charities. Contact Neil: 021 896 924.

## Adult Education in the Faith Ministry

The spirituality course, "An Introduction to Christian Spirituality" (CSp101SMoA) will go into recess until it begins again on Thursday, 29 January 2015.

The second level spirituality course (CSp201SMoA) is in recess and will resume on Wednesday, 4 February 2015.

## Carols with the Angels

Carols with the Angels is on Wednesday 17th December, at 7.30pm in the Salvation Army Citadel Hall, 92 Vivian St. Please come and join in this special celebration as we prepare for the birth of Christ.

## Registration for Hearts Aflame 2015

Hearts Aflame 2015 is an annual ten day Catholic summer school for anyone aged 18 to 35 featuring an awesome line up of international and local speakers, including the Sisters of Life from New York and the world-renowned author and speaker Father Jacques Philippe. It is a transformative event that has been changing lives every January in NZ for almost 25 years, and it is on again from the 2 to 11 January at Nga Tawa College in Marton. Registrations close on Sunday December 14. Visit [www.HeartsAflame.org.nz](http://www.HeartsAflame.org.nz) to register, or for more details (don't forget to check out the great line up of speakers and other events happening at Hearts 2015 on our Facebook page: [www.facebook.com/heartsaflame](http://www.facebook.com/heartsaflame)).

## Catholic Social Services Christmas Gifts

Can you help make a difference to someone at Christmas? Some of the families that Catholic Social Services works with over the year find Christmas hard so we try to make a difference for them by giving them some gifts to share with their children. If you can help, please bring along a small gift to Mass on Sunday and leave it in the basket. If you wrap it, please indicate on the outside if it is for a boy or girl and approximately the age it would suit.

## Catholic Discipleship College

The Catholic Discipleship College is now accepting applications for students for 2015. We offer a nine month, live-in course in Auckland beginning in February. Visit [www.cdc.ac.nz](http://www.cdc.ac.nz) or contact Anne Marie at [info@cdc.ac.nz](mailto:info@cdc.ac.nz) or (09) 480 0548.

## ST MARY OF THE ANGELS EARTHQUAKE STRENGTHENING APPEAL

I would like to help preserve St Mary of the Angels Church

Name:

Address:

Email:

Tel:

My contribution will be made by:

☐ Direct Credit

☐ Cheque

☐ Cash

PLEASE SPECIFY AMOUNT

\$

Donations can be sent to:  
Seismic Strengthening Fund  
St Mary of the Angels  
17 Boulcott St  
Wellington 6011

Bank Account Details:  
02-0536-0003242-23  
Bank of New Zealand  
Lambton Quay  
Wellington

St Mary of the Angels is registered with the Charities Commission. All donations are tax deductible and a receipt issued.