

This Week's Readings

First Reading Isaiah 63:16-17; 64:1. 3-8
Oh that you would tear the heavens apart and come down.

Second Reading 1 Cor 1:3-9
The revelations we looked for, Christ Jesus our Lord.

Gospel Reading Mark 13:33-37
Stay awake! You never know when the Lord will come.

Next Week's Readings

First Reading Isaiah 40:1-5. 9-11
Psalm 84
Second Reading Peter 3:8-14
Gospel Reading Mark 1:1-8

Last Sunday's Collection

Total	\$4,659
Parish Expenses	\$3,168
Support of House	\$1,491



St Mary of the Angels Christmas Cards

St Mary of the Angels Christmas Cards are now available for purchase either after Mass on Sunday or from the Parish Office.

A6 \$15 for a pack of 12
DLE \$15 for a pack of 12



TO KEEP UP TO DATE WITH EVENTS AROUND THE ARCHDIOCESE VISIT WWW.WN.CATHOLIC.ORG.NZ

Mass has been offered for:

Recently Deceased: Su-Yen Bok

Anniversaries: Leslie Kriebel, James O'Neill, Joan O'Shea, Grace Smith, Melva Gould, Michael McMullen, Fr Peter Kiley sm, Veronica Rigby, Nora Johnson

Prayers for the Sick: Paul Griffiths, Pat Perkins, Marjorie Feitsma, Graham Townsley, Richard Wright, Fr Craig Larkin sm, Losalia Leo, Patricia Smyth, Maureen McDonald, John Foden, Joanna Veltman, Imelda Reeve, Jan Tuinman, Kath Symes, Dulcie Campbell, Kathleen Phelan, Fr Kevin O'Donoghue sm



Please remember in your prayers, these and the other sick of the Parish. If you know of anyone who is confined to their home or who needs a visit with Holy Communion, please contact Sister Frances at the Parish Office.

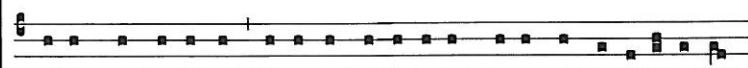
Responsorial Psalm 79

R. Lord, make us turn to you, let us see your face and we shall be saved.

O shepherd of Israel, hear us,
shine forth from your cherubim throne.
O Lord, rouse up your might,
O Lord, come to our help. **R.**

God of hosts, turn again, we implore,
look down from heaven and see.
Visit this vine and protect it,
the vine your right hand has planted. **R.**

May your hand be on the man you have chosen,
the man you have given your strength.
And we shall never forsake you again:
give us life that we may call upon your name. **R.**



De-us, converte nos: et ostende fa-ci-em tu-am et salvi e-rimus.

Convert us O Lord: and show us thy face and we shall be saved.

Columban Calendars

2015 Columban Calendars are available for purchase from the Parish Office for \$10 each.

All proceeds go toward supporting St Columbans Mission Society.



Planned Giving

If you would like to join the St Mary of the Angels Planned Giving Scheme please contact the Parish Office. A tax rebate of 33.3% may be claimed on all your contributions.

Prayer for Seismic Strengthening Work

Gracious God, Creator of the Universe,
you made us in your own image and likeness.

You gave us wisdom and understanding,
grateful hearts and creative minds.

We pray that our beautiful Church will be strengthened against the peril of earthquake through the generosity of parishioners, the community of Wellington and people throughout New Zealand.

We ask, Lord, that you abundantly bless those who have already donated funds, skill and expertise to this project.

May St Mary of the Angels Church be a symbol of a unified community that will gather to praise and thank you.

Mary our Mother, pray for us.

Korean Catholic Community of Wellington Invites You

We cordially invite you to join us for a special Mass to celebrate the 20th anniversary of the Korean Catholic Community of Wellington.

Date: Saturday, 6th December 2014 at 5 p.m. (Reception follows)

Venue: St Thomas Moore Church (30 Worcester St, Wilton)

Please contact 021-150 1471 or kccw@live.co.kr with any questions.

Study Theology

Applications are invited for students wishing to study part-time GradDip in Theology from Good Shepherd College, Auckland, in 2015. Study is available both on-campus or by distance. Applications close Dec 15. Please email admin@gsc.ac.nz for forms.

Adult Education in the Faith Ministry

First Level Course: An Introduction to Christian Spirituality

Thursday 4th December, 7.30 - 9.30pm at Pa Maria, 78 Hobson St. **Theme:** Spirituality & Prayer

Session 6: Methods of Prayer (Part 4) – (D) Notable Phenomena Associated with Mystical Prayer; (F) Intensive and Extensive Prayer; the Lord's Prayer and Conclusion.

The second level spirituality course (CSp201SMoA) is in recess and will resume on Wednesday, 4 February 2015.



Save with the CDF and you'll be helping the needy; each year all of CDF's operating surplus goes to the Archdiocese for social caring and pastoral services.

Saving with us helps your Archdiocese.
Call 0800 4 233 233 or visit www.cdf.co.nz



LT McGuinness LIMITED
BUILDING CONTRACTORS
9 Francis Place,
PO Box 9639, Wellington
Phone (04) 384 8455 Fax (04) 801 8455
Email: ltm@mcguinness.co.nz

Little Peckish Café
Feeling a little peckish?
Dukes Arcade · Great food, coffee, service
Office catering available
Phone 499 7769 · Mobile 0274 461 650

NEW WORLD WELLINGTON CITY
279 WAKEFIELD ST.
OPEN 7 DAYS | 7AM - MIDNIGHT
WWW.WGTNCITYNEWWORLD.CO.NZ

For Your Diaries : 2014

30 November, Advent Vespers

All are invited to the St Mary of the Angels and St John's Presbyterian Church combined Advent Carols Service on Sunday 30th November at 7.30pm at St John's Presbyterian Church. St Mary of the Angels choir will join with St John's choir in leading the music for this service.

4 December, Celebration of 200 Years of Christianity in New Zealand

All are welcome to attend a Marsden Lecture celebrating 200 years of Christianity in New Zealand on Thursday the 4th December at 7.30pm. The lecture will be held in the Loaves and Fishes Hall - Cathedral of St Paul, Corner Hill and Molesworth St, Thorndon with speakers Dr Geoff Troughton, Rev Dr Merv Duffy, Jo Anne Rosandich. Entry by koha. Refreshments provided.

4 December, Healing Service with Fr John Rea

All are invited to a Healing Service led by Fr John Rea at St Bernadette's Church 194 Naenae Rd at 7.30pm Thursday 4th December. Come and encounter Jesus Christ as your healer. For further enquiries please contact Mary Boyle, Ph:567 6316

5 December, Taize Prayer at the Home of Compassion

The Sisters of Compassion are offering Taize Prayer on the first Friday of each month from 7pm-8pm at the Home of Compassion Chapel in Island Bay. The next day will be Friday 5th December. All are welcome to join the prayer group.

6 December, Music Book Fair

All musicians, music lovers, music teachers and students and anyone interested are welcome to attend a one day only Music Book Fair at the St Mary of the Angels Parish Hall on Saturday 6th December from 12 noon until 5.00pm. Three collections of music books including scores and didactic material will be on sale.

17 December, Carols with the Angels

Carols with the Angels is on Wednesday 17th December, at 7.30pm in the Salvation Army Citadel Hall, 92 Vivian St. Please come and join in this special celebration as we prepare for the birth of Christ.

2-11 January, Hearts Aflame Summer Camp

Hearts Aflame is a ten day Catholic summer school that is open to young adults aged 18 to 35. This year Hearts Aflame will take place at Nga Tawa Diocesan School, Marton. For more information or to register, visit www.heartsaflame.org.nz

20-24 January, LifeTeen Summer Camp

The first ever LifeTeen Camp will take place at Forest lakes, Otaki in January 2015. The camp is for 13-18 year olds and is full of faith, friendship and activities. For more information or to register visit www.wellington.lifeteen.org.nz

Traditional Latin Mass is celebrated each Sunday at 12.30pm at Pa Maria, 78 Hobson Street, Thorndon. Enquiries: Neil Coup 021 896 924

Quality Te Aro Offices 5-7 Vivian Street, Wellington

Great location close to Cafe district
Busy arterial road
Air conditioned
Car parking available

Office suites available at an affordable price. Semi-serviced suites (approx 18sqm) that are fully furnished. There is also a company floor area (approx 200sqm) with 5x partitioned offices, Board room and Meeting room. Shared kitchen and shower facilities. Car parking available in the building at an additional rate.

This is a must see for new businesses on a budget. Earthquake Engineering Evaluation IEP Report NBS 80 %

Contact by e-mail for further information: mariabaldock@gmail.com

This newsletter is kindly sponsored by:
Michael Burrowes
of Burrowes and Company
Barristers and Solicitors
phone (04) 473 7733

**BURROWES
and Company**

Barristers and Solicitors

GLOBUS RELIGIOUS TRAVEL

Faith-based travel is the perfect way to build community. Explore the stories, follow in the footsteps of spiritual leaders and discover the roots of our faith.

For more information call **0800 Globus** or speak with **Tracey Driscoll**, Area Sales Manager, Globus family of brands.

Please Support our Sponsors



Is dealing with a
**Locally Owned
Funeral Director**
important to you?



Wellington
56 Onepu Road, Kilbirnie
Telephone 387-8301
Email: harbour@funeral-link.co.nz
www.harbourcityfunerals.co.nz

WEST PLAZA HOTEL

LOCATION • COMFORT • STYLE

**Weekend Special
\$125**

One night's stay & cooked breakfast for two
Available Friday, Saturday and Sunday
Subject to availability
110 - 116 Wakefield Street, Wellington
p 0800 731 444
e reservations@westplaza.co.nz
book now westplaza.co.nz



Christian Supplies

www.christiansupplies.co.nz

- See our monthly newsletter in 'The Angelus'
- Freephone 0508 988 988 - Freefax 0508 988 989
email: order@pleroma.org.nz

GLOBUS

Sistine Chapel, Vatican City

The Angelus

St Mary of the Angels Parish

Church and Presbytery:

17 Boulcott Street,

Wellington Central

Telephone: 473 8074

Parish website: www.smoa.org.nz

St Mary of the Angels is a diverse community which seeks to praise and thank God in a place of calm and beauty and strives to be Christ alive in Central Wellington

Parish Priest

Fr Barry Scannell SM

smoapp@xtra.co.nz

Assistant Priest

Fr Tom O'Connor SM

Adult Education

Fr Michael Young SM

Pastoral Worker

Sr Frances Gibbs CSB

Director of Music

Robert Oliver

robert.oliver@paradise.net.nz

Parish Accountant

Jeanette Temelo

smoamanager@xtra.co.nz

Parish Office

smoaoffice@xtra.co.nz

MASSES

Sunday 7am, 9am, 11am, 5pm

Monday to Friday 7:30am, 12:05pm, & 5:15pm

Saturday 11am

EACH MONTH

4th Saturday 11am Mass with Sacrament of Anointing

ADORATION

Monday to Friday 6:45am-7:30am

Friday 11am-noon

RECONCILIATION

Monday to Thursday 11:30am-noon
12:30pm-1:00pm
4:30pm-5:00pm

Friday 11:00am-noon
12:30pm-1:00pm
4:30pm-5:00pm

Saturday 10:30am-11:00am
4:00pm-5:00pm

30 November 2014, First Sunday of Advent - Year B

Korean Catholic Community of Wellington - 20th Anniversary

The Korean Catholic Community of Wellington (KCCW) celebrates its 20th anniversary on 6th December this year.

Twenty years ago, a few Korean people met in their homes to promote fellowship among Korean Catholics throughout Wellington. Very soon a regular gathering was formed, but we still went to Mass in different Parishes on Sundays. We felt the necessity of a Parish where we were able to participate in liturgy and the Mass together.

Some Korean people were baptised at St Mary of the Angels (SMOA) so it was only natural for our community to make SMOA our Parish in early 1995. Since then we have been actively involved in various liturgical activities and ministries such as altar serving, collecting, being extraordinary ministers of Holy Communion and singing at the Mass and at Carols with the Angels.

As a community we gather in the Parish Hall after Mass each Sunday. We have Catholic teaching and Scripture studies, we pray, and practice singing with organist David Trott. We have Scripture sharing groups each fortnight and run a regular retreat programme. We are now truly blessed to have a Korean priest, Fr Inseok Andrew Kim in Wellington Archdiocese, so that we can celebrate a Korean Mass once a month.

We are very proud of the history of the Korean Catholic Church that began with lay people without any formal missionary priests and was strengthened by the century-long persecution that produced thousands of martyrs. One hundred and three were canonised by Pope John Paul II in 1984 and one hundred and twenty four were beautified by Pope Francis in 2014.

In celebrating our 20th anniversary, we remember our martyrs and will try to follow the example of their spirituality.

We thank Fr Barry Scannell, the pastoral team and parishioners of SMOA for your support.

Cecilia Kim

Korean Liturgy Committee

INVEST IN YOUR FAITH

CATHOLIC DEVELOPMENT FUND of WELLINGTON