

For Your Diaries : 2014

October and November, Recharge, Catholic Men's Retreat

Joshua Catholic Mens Fellowship have organised two Catholic Men's Retreats around the theme "Be Strong and Stand Firm". The first takes place on 10-12 October, Willow Park, Auckland. The second is on 31 October - 2 November, Wainui, Canterbury. Retreat speakers are Brendan Malone and Bishop Denis Browne. For registration details go to www.recharge.org.nz or call Jim Gribble 09 278 6326 or Greg Sullivan 09 846 0691. Enquiries to David Monastra phone 043881079 or text 0274477280

12 October, SMAYACs Potluck Dinner

You are warmly invited to join the St Mary of the Angels Young Adults for a potluck dinner after the 5pm Mass at St Joseph's Mt Victoria on Sunday 12 October. The main meal will be provided, but if you are able to bring a savoury dish or a dessert, it would be greatly appreciated.

24 October, St Brigid's Feilding 125th Jubilee

St Brigid's Parish in Feilding invite you to their 125th Jubilee on 24th - 26th October (Labour weekend). Registration and meet & greet over nibbles and drinks will happen on Friday 24th October. Saturday will include the Stations of the cross, morning tea, memorial Mass, lunch, visits to local sites of interest to the parish, family games and a Jubilee dinner. The weekend will end on Sunday with a Jubilee Mass and BBQ lunch. Cost: \$40 per person. For more information contact: stjubilee@gmail.com or 0800 505 194

28 October, St John's Fellowship Group

St John's Fellowship Group extend a warm invitation to our parishioners to join them at their monthly meetings. The next gathering is on Tuesday 28 October, 11am at St John's Presbyterian Parish Hall, corner of Dixon and Willis Sts. Fr Barry Scannell will speak about the seismic strengthening.

1 November, Vespers for All Saints

All are invited to Vespers for All Saints Day with the St Mary of the Angels Choir at Sacred Heart Cathedral. Vespers start at 4.40pm followed by Mass at 5.30pm. After Mass the choir will present a short concert.

Quality Te Aro Offices

5-7 Vivian Street, Wellington

Great location close to Cafe district
Busy arterial road
Air conditioned
Car parking available

Office suites available at an affordable price. Semi-serviced suites (approx 18sqm) that are fully furnished. There is also a company floor area (approx 200sqm) with 5x partitioned offices, Board room and Meeting room. Shared kitchen and shower facilities. Car parking available in the building at an additional rate.

This is a must see for new businesses on a budget. Earthquake Engineering Evaluation IEP Report NBS 80 %

Contact by e-mail for further information: mariabaldock@gmail.com

This newsletter is kindly sponsored by:
Michael Burrowes
of Burrowes and Company
Barristers and Solicitors
phone (04) 473 7733

BURROWES
and Company

Barristers and Solicitors

GLOBUS RELIGIOUS TRAVEL

Faith-based travel is the perfect way to build community. Explore the stories, follow in the footsteps of spiritual leaders and discover the roots of our faith.

For more information call **0800 Globus** or speak with **St Mary of the Angels** parishioner **Tracey Driscoll**, Area Sales Manager, Globus family of brands.

Please Support our Sponsors



Is dealing with a
**Locally Owned
Funeral Director**
important to you?



Wellington
56 Onepu Road, Kilbirnie
Telephone 387-8301
Email: harbour@funeral-link.co.nz
www.harbourcityfunerals.co.nz

WEST PLAZA HOTEL

LOCATION • COMFORT • STYLE

Weekend Special

\$125

One night's stay & cooked breakfast for two

Available Friday, Saturday and Sunday
Subject to availability

110 - 116 Wakefield Street, Wellington
p 0800 731 444

e reservations@westplaza.co.nz
book now westplaza.co.nz



Christian Supplies

www.christiansupplies.co.nz

- See our monthly newsletter in 'The Angelus'
- Freephone 0508 988 988 - Freefax 0508 988 989
email: order@pleroma.org.nz



Sistine Chapel, Vatican City

The Angelus

St Mary of the Angels Parish

Church and Presbytery:

17 Boilcott Street,

Wellington Central

Telephone: 473 8074

Parish website: www.smoa.org.nz

St Mary of the Angels is a diverse community which seeks to praise and thank God in a place of calm and beauty and strives to be Christ alive in Central Wellington

Parish Priest

Fr Barry Scannell SM

smoapp@xtra.co.nz

Assistant Priest

Fr Tom O'Connor SM

Adult Education

Fr Michael Young SM

Pastoral Worker

Sr Frances Gibbs CSB

Director of Music

Robert Oliver

robert.oliver@paradise.net.nz

Parish Accountant

Jeanette Temelo

smoamanager@xtra.co.nz

Parish Office

smoaoffice@xtra.co.nz

MASSES

Sunday 7am, 9am, 11am, 5pm

Monday to Friday 7:30am, 12:05pm,
& 5:15pm

Saturday 11am

EACH MONTH

4th Saturday 11am Mass with
Sacrament of Anointing

ADORATION

Monday to Friday 6:45am-7:30am

Friday 11am-noon

RECONCILIATION

Monday to Thursday 11:30am-noon
12:30pm-1:00pm
4:30pm-5:00pm

Friday 11:00am-noon
12:30pm-1:00pm
4:30pm-5:00pm

Saturday 10:30am-11:00am
4:00pm-5:00pm

5th October 2014, 27th Sunday in Ordinary Time - Year A

Thank You

A sincere thank you to the parishioners who have responded during the past week to the article in last week's Angelus about the fundraising for the Seismic Strengthening of the Church. The Fundraising Committee are working extremely hard to reach the goal of \$3.1 million dollars so that we can:

- make application to the Lotteries Grants Board for assistance
- begin work on Stage 1 of the project

Please continue to keep this in your prayers and, more importantly, consider what you are able to give to ensure this goal is reached in the next few weeks.

Synod on the Family

Archbishop John is in Rome attending the 'Synod on the Family' which begins on Sunday. The Synod was called by Pope Francis and is a very important event in the life of the Church. The Pope and our Bishops are deeply concerned about many family issues. This was reflected in the number of submissions received by our Bishops in preparation for the Synod.

Please pray for the success of the Synod and for the participants.

SMAYACs Pot Luck Dinner

Everyone is warmly invited to a 'potluck dinner' after the 5pm Mass at St Joseph's Church, Mt Victoria on Sunday 12 October. The main course will be provided, but if you are able to bring a savoury dish or a dessert it would be greatly appreciated.

This is a good opportunity to support our young adults and especially our university students who only have a couple of weeks of term time left. They will then be studying for exams and then many of them will be returning home for the summer holidays.

These 'potluck dinners' are always great fun and we look forward to seeing you there.

Fr Barry Scannell s.m.

Parish Priest

INVEST IN YOUR FAITH

CATHOLIC DEVELOPMENT FUND of WELLINGTON

This Week's Readings

First Reading	Is	5:1-7
<i>The vineyard of the Lord God of hosts is the House of Israel.</i>		
Second Reading	Phil	4:6-9
<i>Do these things and the God of peace will be with you.</i>		
Gospel Reading	Matthew	21:33-43
<i>He leased his vineyard to other farmers.</i>		

Next Week's Readings

First Reading	Is	25:6-10
Psalm	22	
Second Reading	Phil	4:12-14, 19-20
Gospel Reading	Matthew	22:1-14

Last Sunday's Collection

Total	\$4,885
Parish Expenses	\$3,322
Support of House	\$1,563



Planned Giving

If you would like to join the St Mary of the Angels Planned Giving Scheme please contact the Parish Office. A tax rebate of 33.3% may be claimed on all your contributions.

Columban Calendars

2015 Columban Calendars are now available for purchase from the Parish Office for \$10 each.

All proceeds go toward supporting St Columbans Mission Society.



Mass has been offered for:

Recently Deceased: Fr John Griffin, Sister Ethel Bignell RSM, Lloyd Salud, Su-Yen Bok

Anniversaries: John Casserly, Sidney Hall, Maria Dorriguzzi

Prayers for the Sick: Richard Wright, Ann Ross, Fr Craig Larkin sm, Losalia Leo, Patricia Smyth, Maureen McDonald, Philip Birch, John Foden, Joanna Veltman, Imelda Reeve, Jan Tuinman, Dulcie Campbell, Kathleen Phelan, Fr Kevin O'Donoghue sm
Please remember in your prayers, these and the other sick of the Parish. If you know of anyone who is confined to their home or who needs a visit with Holy Communion, please contact Sister Frances at the Parish Office.



Responsorial Psalm 79

R. The vineyard of the Lord is the House of Israel.

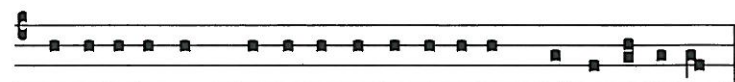
You brought a vine out of Egypt;
to plant it you drove out the nations.
It stretched out its branches to the sea,
to the Great River it stretched out its shoots. **R.**

Then why have you broken down its walls?
It is plucked by all who pass.
It is ravaged by the boar of the forest,
devoured by the beasts of the field. **R.**

God of hosts, turn again, we implore,
look down from heaven and see.

Visit this vine and protect it,
the vine your right hand has planted. **R.**

And we shall never forsake you again:
give us life that we may call upon your name.
God of hosts, bring us back;
let your face shine on us and we shall be saved. **R.**



Vi-ne-a e-nim Domi-ni ex-erci-tu-um domus Isra-el.

The vineyard of the Lord of Hosts is the house of Israel.

Adult Education in the Faith Ministry

The first and second level spirituality courses will take a short break. The second level course will recommence on Wednesday, 15 October. The first level course will recommence on Thursday, 16 October.

Prayer for Seismic Strengthening Work

Gracious God, Creator of the Universe,
you made us in your own image and likeness.

You gave us wisdom and understanding,
grateful hearts and creative minds.

We pray that our beautiful Church will be
strengthened against the peril of earthquake
through the generosity of parishioners,
the community of Wellington and people
throughout New Zealand.

We ask, Lord, that you abundantly bless those
who have already donated funds,
skill and expertise to this project.

May St Mary of the Angels Church
be a symbol of a unified community that
will gather to praise and thank you.

Mary our Mother, pray for us.

Direction by Discernment

Throughout October the Young Church of the Wellington Archdiocese is running a 'Month of Discernment', a time to walk together exploring personal and collective discernment.

Upcoming Events include:

Prayer Group at St Mary of the Angels

9th October, 6pm St Mary of the Angels Parish Hall
Come and join the young adults from St Mary of the Angels for an hour of prayer and reflection following the 5.15pm Mass in the Parish Hall.

For more events visit www.wn.catholic.org.nz or email youth@wn.catholic.org.nz

SMAYACs Pot Luck Dinner

Everyone is warmly invited to a 'potluck dinner' after the 5pm Mass at St Joseph's Church, Mt Victoria on Sunday 12 October. The main course will be provided, but if you are able to bring a savoury dish or a dessert it would be greatly appreciated. This is a good opportunity to support our young adults and especially our university students who only have a couple of weeks of term time left.

SMAYACs Prayer Group

All young adults and the young at heart are invited to a time of prayer, reflection and readings every Thursday at 6pm in the Parish Hall.

Suzanne Aubert Tertiary Scholarship

This scholarship is available within the Archdiocese to assist students with their tertiary education. Apply in writing to: Sisters of Compassion, PO Box 1474, Wellington. Applications close 3 November 2014.

St Mary of the Angels Choir

The St Mary of the Angels Choir is seeking new members. The choir sings Gregorian chant and polyphony at the 12pm Mass each Sunday. If you would like to join the choir please contact Robert Oliver: phone 934 2296 or email robert.oliver@paradise.net.nz or say hello to one of the friendly choir members after Mass. There is no audition.

Are you a Saint Bernard's College Old Boy?

The old boys Association is being re-established and all Saint Bernard's Old Boys are invited to the Saint Bernard's College Old Boys Association Inaugural AGM, Thursday 30 October 2014, at Saint Bernard's College Staffroom, 183 Waterloo Road Lower Hutt. 7:30PM -8:30PM followed by nibbles and drinks. RSVP or any questions please contact Jim Nicolle: phone 027-5058421 ; email jamesnicolle@xtra.co.nz

Catholic Discipleship College

The Catholic Discipleship College is now taking applications for students for 2015. We offer a nine month, live-in course in Auckland starting in February which includes prayer, Catholic faith teachings and development of outreach skills. Check out our web page: www.cdc.ac.nz or contact Anne Marie at info@cdc.ac.nz or (09) 480 0548.

Wool Wanted

Wool (any colour!) to be knitted into small woollen items for Catholic charities Please contact Neil (OL Refuge SMOA Legion of Mary), ph: 021896924.

LT McGuinness
BUILDING CONTRACTORS
9 Francis Place,
PO Box 9639, Wellington
Phone (04) 384 8455 Fax (04) 801 8455
Email: ltm@mcguinness.co.nz

Little Peckish
Cafe
Feeling a little peckish?
Dukes Arcade • Great food, coffee, service
Office catering available
Phone 499 7769 • Mobile 0274 461 650

NEW WORLD
WELLINGTON CITY
279 WAKEFIELD ST.
OPEN 7 DAYS | 7AM - MIDNIGHT
WWW.WGTNCITYNEWWORLD.CO.NZ

CDF
Catholic Development Fund of Wellington

Save with the CDF and you'll be helping the needy;
each year all of CDF's operating surplus goes to the
Archdiocese for social caring and pastoral services.

Saving with us helps your Archdiocese.
Call 0800 4 233 233 or visit www.cdf.co.nz

