

For Your Diaries : 2014

28 September, Theology on Tap

Come and join the St Mary of the Angels Young Adults Group at Theology on Tap, tonight at 6.30pm upstairs at Hotel Bristol, Cuba St.

3 October, First Friday Taize Prayer at the Home of Compassion

All are welcome to join the Taize prayer group on the first Friday of each month. 7pm-8pm at the Home of Compassion Chapel, Island Bay.

3-5 October, Rachel's Vineyard Retreat

A retreat weekend for those whose lives have been touched by abortion. Information is available for men and women. All enquiries strictly confidential. "There is hope for your future." Jer 31. Contact Wendy Hill on 027 254 9222 or visit: www.rachelsvineyard.org.nz

5 October, Young Church Mass

All are invited to the next Archdiocese Young Church Mass, 7pm Sunday 5th October at Sacred Heart Cathedral. Young Church Masses are for all teenagers, young adults, families and the young at heart! Please bring a plate to share for supper following Mass. For more information contact youth@wn.catholic.org.nz or phone 04 496 1731.

October and November, Recharge, Catholic Men's Retreat

Joshua Catholic Mens Fellowship have organised two Catholic Men's Retreats around the theme "Be Strong and Stand Firm". The first takes place on 10-12 October, Willow Park, Auckland. The second is on 31 October - 2 November, Wainui, Canterbury. Retreat speakers are Brendan Malone and Bishop Denis Browne. For registration details go to www.recharge.org.nz or call Jim Gribble 09 278 6326 or Greg Sullivan 09 846 0691. Enquiries to David Monastra phone 043881079 or 0274477280

12 October, SMAYACs Potluck Dinner

You are warmly invited to join the St Mary of the Angels Young Adults for a potluck dinner after the 5pm Mass at St Joseph's Mt Victoria on Sunday 12 October. The main meal will be provided, but if you are able to bring a savoury dish or a dessert, it would be greatly appreciated.

28 October, St John's Fellowship Group

St John's Fellowship Group extend a warm invitation to our parishioners to join them at their monthly meetings. The next gathering is on Tuesday 28 October, 11am at St John's Presbyterian Parish Hall, corner of Dixon and Willis Sts.. Fr Barry Scannell will speak about seismic strengthening.

Quality Te Aro Offices

5-7 Vivian Street, Wellington

Great location close to Cafe district
Busy arterial road
Air conditioned
Car parking available

Office suites available at an affordable price. Semi-serviced suites (approx 18sqm) that are fully furnished. There is also a company floor area (approx 200sqm) with 5x partitioned offices, Board room and Meeting room. Shared kitchen and shower facilities. Car parking available in the building at an additional rate.

This is a must see for new businesses on a budget. Earthquake Engineering Evaluation IEP Report NBS 80 %

Contact by e-mail for further information: mariabaldock@gmail.com

This newsletter is kindly sponsored by:
Michael Burrowes
of Burrowes and Company
Barristers and Solicitors
phone (04) 473 7733

BURROWES
and Company

Barristers and Solicitors

GLOBUS RELIGIOUS TRAVEL

Faith-based travel is the perfect way to build community. Explore the stories, follow in the footsteps of spiritual leaders and discover the roots of our faith.

For more information call **0800 Globus** or speak with **St Mary of the Angels** parishioner **Tracey Driscoll**, Area Sales Manager, Globus family of brands.

Please Support our Sponsors



Is dealing with a
**Locally Owned
Funeral Director**
important to you?

Harbour City
FUNERAL HOME

Wellington
56 Onepu Road, Kilbirnie
Telephone 387-8301
Email: harbour@funeral-link.co.nz
www.harbourcityfunerals.co.nz

WEST PLAZA HOTEL

LOCATION • COMFORT • STYLE

Weekend Special
\$125

One night's stay & cooked breakfast for two
Available Friday, Saturday and Sunday
Subject to availability
110 - 116 Wakefield Street, Wellington
p 0800 731 444
e reservations@westplaza.co.nz
book now westplaza.co.nz



Christian Supplies

www.christiansupplies.co.nz

- See our monthly newsletter in 'The Angelus'
- Freephone 0508 988 988 - Freefax 0508 988 989
email: order@pleroma.org.nz

GLOBUS

Sistine Chapel, Vatican City

The Angelus

St Mary of the Angels Parish

Church and Presbytery:

17 Boulcott Street,
Wellington Central
Telephone: 473 8074
Parish website: www.smoa.org.nz

St Mary of the Angels is a diverse community which seeks to praise and thank God in a place of calm and beauty and strives to be Christ alive in Central Wellington

Parish Priest

Fr Barry Scannell SM
smoapp@xtra.co.nz

Assistant Priest

Fr Tom O'Connor SM

Adult Education

Fr Michael Young SM

Pastoral Worker

Sr Frances Gibbs CSB

Director of Music

Robert Oliver
robert.oliver@paradise.net.nz

Parish Accountant

Jeanette Temelo
smoamanager@xtra.co.nz

Parish Office

smoaoffice@xtra.co.nz

MASSES

Sunday 7am, 9am, 11am, 5pm

Monday to Friday 7:30am, 12:05pm,
& 5:15pm

Saturday 11am

EACH MONTH

4th Saturday 11am Mass with
Sacrament of Anointing

ADORATION

Monday to Friday 6:45am-7:30am

Friday 11am-noon

RECONCILIATION

Monday to Thursday 11:30am-noon
12:30pm-1:00pm
4:30pm-5:00pm

Friday 11:00am-noon
12:30pm-1:00pm
4:30pm-5:00pm

Saturday 10:30am-11:00am
4:00pm-5:00pm

28th September 2014, 26th Sunday in Ordinary Time - Year A

Fundraising for the Seismic Strengthening of the Church

I think it is timely to give parishioners an update on the progress on the fundraising appeal for the seismic strengthening of the Church. You will remember that:

- 1) The official launch took place at Parliament on 7 August. Approximately 300 people attended that launch;
- 2) All parishioners received a copy of the fundraising brochure at Masses on Sunday 17 August;

The total either raised or committed by generous benefactors so far for the seismic strengthening of the Church is \$1,876,890.

The cost of preparing the seismic plans has been \$562,215. This includes the work undertaken by structural engineers, architects, geo-tech engineers, a conservation architect and our quantity surveyor. This also includes the removal and storage of the Maxwell Fernie Organ. Plans were submitted to the Wellington City Council and Resource Consent and Stage 1 Building Consent have been received.

The Friends of St Mary of the Angels Charitable Trust has funds which are fully committed to the seismic strengthening. The Parish also has an investment with Catholic Development Fund. The total of funds available from these two sources for the seismic strengthening of the Church is \$310,231.

The most urgent challenge is to raise the initial \$3.1 million that will enable us to begin work on Stage 1 and to apply to the New Zealand Lotteries Grants Board for assistance. The next round of Lottery Grant applications are in December this year. We cannot take either of these steps until that first mark is reached. This means we need to raise approximately \$1.2 million in the next few weeks.

We are relying on parishioners and many others from the wider community to help us reach this first crucial goal. So far only 10 percent of parishioners (approximately 60 people) have returned their 'donor card'.

We ask that all parishioners give earnest thought and consideration to the contribution that you are able to make so that we can quickly achieve this first goal of \$3.1 million. If we are not in a position to apply for a Lottery Grant in December then work on the seismic strengthening of the Church will be delayed for several months.

Fr Barry Scannell s.m.
Parish Priest

INVEST IN YOUR FAITH

CATHOLIC DEVELOPMENT FUND of WELLINGTON

This Week's Readings

First Reading Ezek 18:25-28
The sinner who decides to turn against sinfulness deserves to live.

Second Reading Phil 2:1-11
In your minds you must be the same Christ Jesus.

Gospel Reading Matthew 21:28-32
He went out moved by regret. The tax collectors and prostitutes will precede you in the kingdom of God.

Next Week's Readings

First Reading Is 5:1-7
Psalm 79
Second Reading Phil 4:6-9
Gospel Reading Matthew 21:33-43

Last Sunday's Collection

Total	\$5,048
Parish Expenses	\$3,433
Support of House	\$1,615



Planned Giving

If you would like to join the St Mary of the Angels Planned Giving Scheme please contact the Parish Office. A tax rebate of 33.3% may be claimed on all your contributions.

Columban Calendars

2015 Columban Calendars are now available for purchase from the Parish Office for \$10 each.

All proceeds go toward supporting St Columbans Mission Society.



Mass has been offered for:

Recently Deceased: Fr John Griffin, Helen Havasi, Vaughn Laken, Mrs Noiseux, Tess Petheran, Su-Yen Bok

Anniversaries: Norma Burns, O'Brien Reeve, John Casserley, Peter Carr, Joan Lynch, Fr John Aitken sm, Mary Chinnock, Mary Frawley, Pepe Va'a, Zoe Moriarty, Breda Smith, Freda Fernie

Prayers for the Sick: Jeanette Parker, Richard Wright, Ann Ross, Fr Craig Larkin sm, Losalia Leo, Patricia Smyth, Maureen McDonald, Philip Birch, John Foden, Joanna Veltman, Imelda Reeve, Jan Tuinman, Dulcie Campbell, Kathleen Phelan



Please remember in your prayers, these and the other sick of the Parish. If you know of anyone who is confined to their home or who needs a visit with Holy Communion, please contact Sister Frances at the Parish Office.

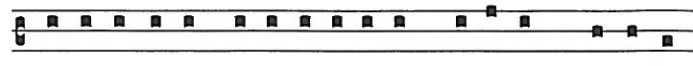
Responsorial Psalm 24

R. Remember your mercies, O Lord.

Lord, make me know your ways.
 Lord, teach me your paths.
 Make me walk in your truth, and teach me:
 for you are God my saviour. **R.**

Remember your mercy, Lord,
 and the love you have shown from of old.
 Do not remember the sins of my youth.
 In your love remember me,
 because of your goodness, O Lord. **R.**

The Lord is good and upright.
 He shows the path to those who stray,
 he guides the humble in the right path;
 he teaches his way to the poor. **R.**



Remi-nisce-re mi-se-ra-ti- onum tu-a-rum Domi-ne.

Remember, O Lord the depths of thy compassion.

National Organ Month Concerts

St John's in the City is celebrating National Organ Month by showcasing its historic 1875 Lewis organ and fundraising for it's refurbishment. The final recital is at 2.30pm today. Door sales tickets: \$20 or \$10 concession, (children free).

Adult Education in the Faith Ministry

The first and second level spirituality courses will take a short break. The second level course will recommence on Wednesday, 15 October. The first level course will recommence on Thursday, 16 October.

Prayer for Seismic Strengthening Work

Gracious God, Creator of the Universe,
 you made us in your own image and likeness.

You gave us wisdom and understanding,
 grateful hearts and creative minds.

We pray that our beautiful Church will be strengthened against the peril of earthquake through the generosity of parishioners, the community of Wellington and people throughout New Zealand.

We ask, Lord, that you abundantly bless those who have already donated funds, skill and expertise to this project.

May St Mary of the Angels Church be a symbol of a unified community that will gather to praise and thank you.

Mary our Mother, pray for us.

Direction by Discernment

Throughout October the Young Church of the Wellington Archdiocese is running a 'Month of Discernment', a time to walk together exploring personal and collective discernment. Upcoming Events include:

Tools for Discernment

5th October, 3.30pm - 5.30pm at the Catholic Centre
 Come and get equipped with some great tools for discernment and meet other young people who will be exploring this topic over the next month.

Young Church Mass

5th October, 7pm at Sacred Heart Cathedral
 Come and celebrate Mass with youth and young adults from around the Archdiocese.

Prayer Group at St Mary of the Angels

9th October, 6pm St Mary of the Angels Parish Hall
 Come and join the young adults from St Mary of the Angels for an hour of prayer and reflection following the 5.15pm Mass in the Parish Hall.

For more events visit www.wn.catholic.org.nz or email youth@wn.catholic.org.nz

SMAYACs Prayer Group

All young adults and the young at heart are invited to a time of prayer, reflection and readings every Thursday at 6pm in the Parish Hall.

Theology on Tap

St Mary of the Angels Young Adults Group invite everyone to join them at this month's Theology on Tap session tonight at 6.30pm upstairs at Hotel Bristol. This month Chris Duthie-Jung is speaking on the topic "Where have all the young Catholics gone? The Catholic Church in a secular age". Chris is Head of Partnerships and Director of NCRS at The Catholic Institute of New Zealand (TCI). This will be a fascinating talk and we hope to see you there!

SMAYACs Pot Luck Dinner

You are warmly invited to a potluck dinner after the 5pm Mass at St Joseph's Mt Victoria on Sunday 12 October. The main meal will be provided, but if you are able to bring a savoury dish or a dessert, it would be greatly appreciated. They are always great fun, and we look forward to seeing you there.

Suzanne Aubert Tertiary Scholarship

This scholarship is available within the Archdiocese to assist students with their tertiary education. Apply in writing to: Sisters of Compassion, PO Box 1474, Wellington. Applications close 3 November 2014.

Young Adult & Youth Catholic Summer Camps

Hearts Aflame Summer Camp: 2-11 January 2015

Hearts Aflame is a ten day Catholic summer school that is open to young adults aged 18 to 35. This year Hearts Aflame will take place at Nga Tawa Diocesan School, Marton. For more information or to register, visit www.heartsaflame.org.nz

LifeTeen Summer Camp: 20-24 January 2015

The first ever LifeTeen Camp will take place at Forest lakes, Otaki in January 2015. The camp is for 13-18 year olds and is full of faith, friendship and activities. For more information or to register visit www.wellington.lifeteen.org.nz

TO KEEP UP TO DATE WITH EVENTS AROUND THE ARCHDIOCESE VISIT WWW.WN.CATHOLIC.ORG.NZ

LT McGuinness
 BUILDING CONTRACTORS LIMITED
 9 Francis Place,
 PO Box 9639, Wellington
 Phone (04) 384 8455 Fax (04) 801 8455
 Email: ltm@mcguinness.co.nz

Little Peckish
 Cafe
 Feeling a little peckish?
 Dukes Arcade · Great food, coffee, service
 Office catering available
 Phone 499 7769 · Mobile 0274 461 650

NEW WORLD
 Wellington City
 Wellington's only
 inner city supermarket
 Open 7 days 7am - midnight
 279 Wakefield Street. Ph 04 384 8054
www.newworld.co.nz/wellington-city

CDF
 Catholic Development Fund of Wellington

Save with the CDF and you'll be helping the needy;
 each year all of CDF's operating surplus goes to the
 Archdiocese for social caring and pastoral services.

Saving with us helps your Archdiocese.
 Call 0800 4 233 233 or visit www.cdf.co.nz

