

For Your Diaries : 2014

21 & 28 September, National Organ Month

St John's in the City is celebrating National Organ Month by showcasing its historic instrument in recitals at 2.30pm each Sunday in September. Door sales: \$20/\$10 concession/children free.

23 September, Holy Hour at the Cathedral

You are invited to a Holy Hour on Tuesday 23 September, beginning at 7.30pm in the Cathedral chapel to pray for vocations to priesthood and religious life. This Holy Hour will include prayers, Scripture, times of silence and concluding with Benediction followed by supper.

24 September, Public Meeting: Abortion

Debbie Garratt, founder and director of Real Choices Australia, is hosting a public meeting to discuss abortion risks, the problem of coercion and true informed consent. 7.30pm Wednesday 24 September, Room SU 217, Student Union Building, Victoria University Kelburn Campus. For more info, including a map to the venue please visit: www.prolife.org.nz

26 September, Prayer for Peace

The Focolare movement of Wellington invites everyone to a peace vigil to be held at Sacred Heart Cathedral, Hill St, Thorndon at 6pm, 26 September.

26-27 September, Seasons for Growth Training

Seasons for Growth Training to Companion Adults through grief. Date and time: 9am-3pm over both Friday 26th and Saturday 27th of September. Venue: Catholic Centre, Hill Street, Thorndon. Cost: \$ 150 (inclusive of GST). Last date for Registration is 22nd of September. Contact Esther Saldanha for pre-registration 04 496 5182 e.saldanha@wn.catholic.org.nz

3 October, First Friday Taize Prayer at the Home of Compassion

All are welcome to join the Taize prayer group on the first Friday of each month. 7pm-8pm at the Home of Compassion Chapel, Island Bay.

3-5 October, Rachel's Vineyard Retreat

A retreat weekend for those whose lives have been touched by abortion. Information is available for men and women. All enquiries strictly confidential. "There is hope for your future." Jer 31. Contact Wendy Hill on 027 254 9222 or visit: www.rachelsvineyard.org.nz

Traditional Latin Mass is celebrated each Sunday at 12.30pm at Pa Maria, 78 Hobson Street, Thorndon. Enquiries: Neil Coup 021 896 924

Quality Te Aro Offices

5-7 Vivian Street, Wellington

Great location close to Cafe district
Busy arterial road
Air conditioned
Car parking available

Office suites available at an affordable price. Semi-serviced suites (approx 18sqm) that are fully furnished. There is also a company floor area (approx 200sqm) with 5x partitioned offices, Board room and Meeting room. Shared kitchen and shower facilities. Car parking available in the building at an additional rate.

This is a must see for new businesses on a budget. Earthquake Engineering Evaluation IEP Report NBS 80 %

Contact by e-mail for further information: mariabaldock@gmail.com

This newsletter is kindly sponsored by:
Michael Burrowes
of Burrowes and Company
Barristers and Solicitors
phone (04) 473 7733

BURROWES
and Company

Barristers and Solicitors

GLOBUS RELIGIOUS TRAVEL

Faith-based travel is the perfect way to build community. Explore the stories, follow in the footsteps of spiritual leaders and discover the roots of our faith.

For more information call **0800 Globus** or speak with *St Mary of the Angels* parishioner **Tracey Driscoll**, Area Sales Manager, Globus family of brands.

Please Support our Sponsors



Is dealing with a
**Locally Owned
Funeral Director**
important to you?



Wellington
56 Onepu Road, Kilbirnie
Telephone 387-8301
Email: harbour@funeral-link.co.nz
www.harbourcityfunerals.co.nz

WEST PLAZA HOTEL

LOCATION • COMFORT • STYLE

Weekend Special

\$125

One night's stay & cooked breakfast for two
Available Friday, Saturday and Sunday
Subject to availability

110 - 116 Wakefield Street, Wellington
p 0800 731 444
e reservations@westplaza.co.nz
book now westplaza.co.nz



Christian Supplies

www.christiansupplies.co.nz

- See our monthly newsletter in 'The Angelus'
- Freephone 0508 988 988 - Freefax 0508 988 989
email: order@pleroma.org.nz



Sistine Chapel, Vatican City

The Angelus

St Mary of the Angels Parish

Church and Presbytery:

17 Boilcott Street,
Wellington Central

Telephone: 473 8074

Parish website: www.smoa.org.nz

St Mary of the Angels is a diverse community which seeks to praise and thank God in a place of calm and beauty and strives to be Christ alive in Central Wellington

Parish Priest

Fr Barry Scannell SM
smoapp@xtra.co.nz

Assistant Priest

Fr Tom O'Connor SM

Adult Education

Fr Michael Young SM

Pastoral Worker

Sr Frances Gibbs CSB

Director of Music

Robert Oliver
robert.oliver@paradise.net.nz

Parish Accountant

Jeanette Temelo
smoamanager@xtra.co.nz

Parish Office

smoaoffice@xtra.co.nz

MASSES

Sunday 7am, 9am, 11am, 5pm

Monday to Friday 7:30am, 12:05pm, & 5:15pm

Saturday 11am

EACH MONTH

4th Saturday 11am Mass with Sacrament of Anointing

ADORATION

Monday to Friday 6:45am-7:30am

Friday 11am-noon

RECONCILIATION

Monday to Thursday 11:30am-noon
12:30pm-1:00pm
4:30pm-5:00pm

Friday 11:00am-noon
12:30pm-1:00pm
4:30pm-5:00pm

Saturday 10:30am-11:00am
4:00pm-5:00pm

21st September 2014, 25th Sunday in Ordinary Time - Year A

The Spirit of Co-operation

I am sure that all parishioners of St Mary of the Angels have felt the loss of our Church since its closure in July 2013. We do miss the beauty and sacredness of a space that the Parish has worshipped in since 1922. However, there have also been some very special things that have happened since the closure and so many people and other Christian communities who have reached out to help us in our need.

The spirit of co-operation which we have been the benefactors of in so many ways has helped us as a Parish to continue with our week-day and Sunday Masses and it has deepened our friendship with our Christian brothers and sisters.

Another example of this generosity is the St John's Presbyterian Fellowship Group. They have asked me to speak at their October meeting about the seismic strengthening plans for the Church which I am very happy to do. They have also extended an invitation for any of our elderly parishioners to attend their regular monthly meetings. Those meetings for the rest of this year are:

- 11am Tuesday 23 September - *Speaker: Roger Lloyd "The Impact of Flowers"*
- 11am Tuesday 28 October - *Speaker: Father Barry Scannell sm*
- 11am Tuesday 25 November - *An early Advent Church Service and lunch*

I think it is important for us to respond to this generous invitation. I would like to hear from any elderly parishioners who would be prepared to attend these meetings of the Fellowship Group. The next meeting is at 11am this Tuesday.

Hospital Chaplaincy Appeal

This week is National Hospital Chaplaincy Week. Hospital Chaplaincy is a very important service. The Inter-Church Council for Hospital Chaplaincy (IHC) provides Hospital Chaplaincy Services in 48 public hospitals from Kaitia to Invercargill. The current contract between IHC and the Ministry of Health has brought the government's contribution back to almost 50% of the total cost of the service nationally and so it is necessary for the IHC Trust Board and its Local Service Provider Committees to seek the other portion (\$2.4 million) from the Churches and the wider community, if it is to maintain its current service. Donation slips are available Masses today. Please give generously and keep the work of the IHC Chaplains in your prayers.

Fr Barry Scannell s.m.
Parish Priest

INVEST IN YOUR FAITH

CATHOLIC DEVELOPMENT FUND of WELLINGTON

This Week's Readings

First Reading	Is	55:6-9
<i>My thoughts are not your thoughts.</i>		
Second Reading	Phil	1:20-24, 27
<i>For me to live is Christ.</i>		
Gospel Reading	Matthew	20:1-16
<i>Why are you jealous because I am generous?</i>		

Next Week's Readings

First Reading	Ezek	18:25-28
Psalm	24	
Second Reading	Phil	2:1-11
Gospel Reading	Matthew	21:28-32

Last Sunday's Collection

Total	\$4,923
Parish Expenses	\$3,495
Support of House	\$1,428



Planned Giving

If you would like to join the St Mary of the Angels Planned Giving Scheme please contact the Parish Office. A tax rebate of 33.3% may be claimed on all your contributions.

Columban Calendars

2015 Columban Calendars are now available for purchase from the Parish Office for \$10 each.

All proceeds go toward supporting St Columbans Mission Society.



Mass has been offered for:

Recently Deceased: Helen Havasi, Vaughn Laken, Mrs Noiseux, Tess Petheran, Su-Yen Bok

Anniversaries: Peter Carr, Joan Lynch, Fr John Aitken sm, Mary Chinnock, Mary Frawley, Pepe Va'a, Zoe Moriarty, Breda Smith, Freda Fernie, Francis Renouf, Peter Feenan, Pip Baxter, Marie McWilliams, Gerry Zuccollo

Prayers for the Sick: Jeanette Parker, Richard Wright, Ann Ross, Fr Craig Larkin sm, Losalia Leo, Patricia Smyth, Maureen McDonald, Philip Birch, John Foden, Joanna Veltman, Imelda Reeve, Jan Tuinman, Dulcie Campbell, Kathleen Phelan



Please remember in your prayers, these and the other sick of the Parish. If you know of anyone who is confined to their home or who needs a visit with Holy Communion, please contact Sister Frances at the Parish Office.

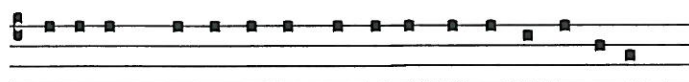
Responsorial Psalm 114

R. The Lord is near to all who call him.

I will bless you day after day and praise your name for ever. The Lord is great, highly to be praised, his greatness cannot be measured. **R.**

The Lord is kind and full of compassion, slow to anger, abounding in love. How good is the Lord to all, compassionate to all his creatures. **R.**

The Lord is just in all his ways and loving in all his deeds. He is close to all who call him, who call on him from their hearts. **R.**



Prope est Domi-nus omni-bus invo-canti-bus e-um.

The Lord is nigh unto all them that call on him.

National Organ Month Concerts

St John's in the City is celebrating National Organ Month by showcasing its historic instrument recitals at 2.30pm on Sunday 21st and 28th September. Door sales tickets: \$20 or \$10 concession, (children free). The recitals are a fundraiser for the refurbishing of the 1875 Lewis organ.

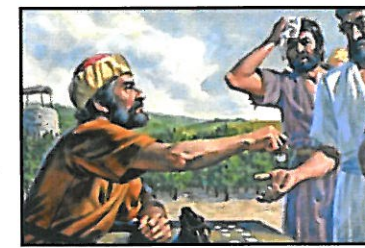
RCIA

The Rite of Christian Initiation of Adults (RCIA) is the process through which adults are invited to learn about the Catholic faith and way of life. The St Mary of the Angels programme is held on Tuesday evenings at 7.15pm in the Parish Hall, 17 Boulcott St Wellington.

If you would like more information or wish to enrol please contact the Parish Office.

Reflection: The last shall be first

In today's gospel parable the labourers who worked all day receive the same wage as those who work one hour, and so they complain. You can see their point. Justice is about giving a person what is owed to them and, on the surface of it, the labourers hired first should have been paid more but as it is stated in Isaiah 55, "my thoughts are not your thoughts and my ways are not your ways."



The hired labourers in the Gospel were the lowest of class of Jewish workingmen. They and their families lived at the poverty level. If they were unemployed, even for a day, the family would go hungry. Their situation was so bad that when they were hired for a days' work they had to be paid before sundown so that they were able to shop and put bread on the table. The market place was the labour exchange and so workers would arrive early with their implements and stay until the end of the day in the hope of being hired.

What does the story mean? I think the answer is in sensing the scene rather than intellectualizing it. Let your imagination see the kindness in the owner's face, call to mind the gloom of the ones hired so late. See their gratefulness now.

The wages are not remuneration for hours worked. They are a gift from a fond heart. Didn't Jesus tell this parable to show how God's caring heart works, how he gives a depth of love to each person, especially to those who suffer and are left behind? There is no greater reward than the gift of God himself, and joy is the only response to the gift.

We are each challenged to reflect something of God's indiscriminate goodness and generosity in our dealings with one another. God's ways are indeed not our ways, but our ways can become a little more like God's ways.

Mary-Anne Peetz, Lay Pastoral Leader, Otari Parish

SMAYACs Prayer Group

All young adults and the young at heart are invited to a time of prayer, reflection and readings every Thursday at 6pm in the Parish Hall.

Theology on Tap

St Mary of the Angels Young Adults Group invite everyone to join them at this month's Theology on Tap session on Sunday 28th September, 6.30pm upstairs at Hotel Bristol. This month Chris Duthie-Jung is speaking on the topic "Where have all the young Catholics gone? The Catholic Church in a secular age". Chris is Head of Partnerships and Director of NCRS at The Catholic Institute of New Zealand (TCI). This will be a fascinating talk and we hope to see you there!

Prayer for Seismic Strengthening Work

Gracious God, Creator of the Universe, you made us in your own image and likeness.

You gave us wisdom and understanding, grateful hearts and creative minds.

We pray that our beautiful Church will be strengthened against the peril of earthquake through the generosity of parishioners, the community of Wellington and people throughout New Zealand.

We ask, Lord, that you abundantly bless those who have already donated funds, skill and expertise to this project.

May St Mary of the Angels Church be a symbol of a unified community that will gather to praise and thank you.

Mary our Mother, pray for us.

Adult Education in the Faith Ministry

First Level Course: *An Introduction to Christian Spirituality*

Thursday 25th September, 7.30 - 9.30pm at Pa Maria, 78 Hobson St. **Theme:** Spirituality & Growth and Development in the Spiritual Life **Session 3:** The Affirmative Way and the Negative Way

Second Level Course (**Restricted**): *The Incomparable God - the Testimony of Israel*

Wednesday 24th September, 5.30pm - 7.30pm in the Parish Hall. **Theme:** Israel's Counter Testimony. **Session 9:** D. God and Negativity (Part 2) - D.1. The First Consideration of God's Negativity: Covenant Sanctions - continued; D.2. The Second Consideration of God's Negativity: Theodicy in the Old Testament

LT McGuinness
LIMITED
BUILDING CONTRACTORS
9 Francis Place,
PO Box 9639, Wellington
Phone (04) 384 8455 Fax (04) 801 8455
Email: ltm@mcguinness.co.nz

Little Peckish
Cafe
Feeling a little peckish?
Dukes Arcade · Great food, coffee, service
Office catering available
Phone 499 7769 · Mobile 0274 461 650

NEW WORLD
Wellington City
Wellington's only
inner city supermarket
Open 7 days 7am - midnight
279 Wakefield Street. Ph 04 384 8054
www.newworld.co.nz/wellington-city

CDF
Catholic Development Fund of Wellington

Save with the CDF and you'll be helping the needy; each year all of CDF's operating surplus goes to the Archdiocese for social caring and pastoral services.

Saving with us helps your Archdiocese.
Call 0800 4 233 233 or visit www.cdf.co.nz

