

For Your Diaries : 2014

29 July - 2 September, Life in the Spirit Seminar

You are invited to attend a Life in the Spirit Seminar taking place over 6 weeks, each Tuesday, from 29th July to 2nd September 2014, 10.30am to 12 noon. Please note change of venue to: St Joseph's Church, 42 Ellice Street, Mt Victoria, Wellington. There will be guest speakers and a Koha will be taken up each week. For further information and to register please contact Judith Milio, ph 4 389 3272; email: j.milio@xtra.co.nz. Registrations will close on 18th July 2014.

30 July, St Catherine's College Open Day

Prospective pupils and parents are invited to St Catherine's Open Day, Wednesday 30th July, 14 Upper Bourke St, Kilbirnie. Come along and find out the benefits of joining a smaller college. (04) 939 8988.

15 August, Vespers for the Feast of the Assumption

All are warmly invited to join the choir of St Mary of the Angels as they celebrate the Feast of the Assumption with a full sung Vespers service at 7.30pm, Friday 15th August. This year it will be held in St Joseph's Church, Mt Victoria. The liturgy lasts about 50 minutes, and is followed by a short concert of choral music, where the choir will sing music from their traditional repertoire of Peter Philips, Palestrina and Byrd, including settings of Ave Maria by Victoria, Rachmanninov and Stravinsky.

3-5 October, Rachel's Vineyard Retreat

A retreat weekend for those whose lives have been touched by abortion. Information is available for men and women. All enquiries strictly confidential. "There is hope for your future." Jer 31. Contact Wendy Hill on 027 254 9222 or visit: www.rachelsvineyard.org.nz

24 October, St Brigid's Feilding 125th Jubilee

St Brigid's Parish in Feilding invite you to their 125th Jubilee on 24th - 26th October (Labour weekend). Registration and meet & greet over nibbles and drinks will happen on Friday 24th October. Saturday will include the Stations of the cross, morning tea, memorial Mass, lunch, visits to local sites of interest to the parish, family games and a Jubilee dinner. The weekend will end on Sunday with a Jubilee Mass and BBQ lunch. Cost: \$40/person. For more information contact: stbjubilee@gmail.com or 0800 505 194

Traditional Latin Mass is celebrated each Sunday at 12.30pm at Pa Maria, 78 Hobson Street, Thorndon. Enquiries: Neil Coup 021 896 924

Quality Te Aro Offices 5-7 Vivian Street, Wellington

Great location close to Cafe district
Busy arterial road
Air conditioned
Car parking available

Office suites available at an affordable price. Semi-serviced suites (approx 18sqm) that are fully furnished. There is also a company floor area (approx 200sqm) with 5x partitioned offices, Board room and Meeting room. Shared kitchen and shower facilities. Car parking available in the building at an additional rate.

This is a must see for new businesses on a budget. Earthquake Engineering Evaluation IEP Report NBS 80 %

Contact by e-mail for further information: mariabaldock@gmail.com

This newsletter is kindly sponsored by:
Michael Burrowes
of Burrowes and Company
Barristers and Solicitors
phone (04) 473 7733

BURROWES and Company

Barristers and Solicitors

GLOBUS RELIGIOUS TRAVEL

Faith-based travel is the perfect way to build community. Explore the stories, follow in the footsteps of spiritual leaders and discover the roots of our faith.

For more information call **0800 Globus** or speak with **St Mary of the Angels** parishioner **Tracey Driscoll**, Area Sales Manager, Globus family of brands.

Please Support our Sponsors



Is dealing with a
**Locally Owned
Funeral Director**
important to you?



Wellington
56 Onepu Road, Kilbirnie
Telephone 387-8301
Email: harbour@funeral-link.co.nz
www.harbourcityfunerals.co.nz

WEST PLAZA HOTEL LOCATION • COMFORT • STYLE

Weekend Special \$125

One night's stay & cooked breakfast for two
Available Friday, Saturday and Sunday
Subject to availability
110 - 116 Wakefield Street, Wellington
p 0800 731 444
e reservations@westplaza.co.nz
book now westplaza.co.nz



Christian Supplies

www.christiansupplies.co.nz

- See our monthly newsletter in 'The Angelus'
- Freephone 0508 988 988 - Freefax 0508 988 989
email: order@pleroma.org.nz



Sistine Chapel, Vatican City

The Angelus

St Mary of the Angels Parish

Church and Presbytery:

17 Bouldcott Street,
Wellington Central
Telephone: 473 8074
Parish website: www.smoa.org.nz

St Mary of the Angels is a diverse community which seeks to praise and thank God in a place of calm and beauty and strives to be Christ alive in Central Wellington

Parish Priest

Fr Barry Scannell SM
smoapp@xtra.co.nz

Assistant Priest

Fr Tom O'Connor SM

Adult Education

Fr Michael Young SM

Pastoral Worker

Sr Frances Gibbs CSB

Director of Music

Robert Oliver
robert.oliver@paradise.net.nz

Parish Accountant

Jeanette Temelo
smoamanager@xtra.co.nz

Parish Office

smoaoffice@xtra.co.nz

MASSES

Sunday 7am, 9am, 11am, 5pm

Monday to Friday 7:30am, 12:05pm, & 5:15pm

Saturday 11am

EACH MONTH

4th Saturday 11am Mass with
Sacrament of Anointing

ADORATION

Monday to Friday 6:45am-7:30am

Friday 11am-noon

RECONCILIATION

Monday to Thursday 11:30am-noon
12:30pm-1:00pm
4:30pm-5:00pm

Friday 11:00am-noon
12:30pm-1:00pm
4:30pm-5:00pm

Saturday 10:30am-11:00am
4:00pm-5:00pm

27th July 2014, 17th Sunday in Ordinary Time - Year A

First Anniversary

It is one year since St Mary of the Angels Church closed following the earthquakes of 21 July 2013. Since that time the Parish has celebrated Masses in four different venues each Sunday. We are extremely grateful to the Cathedral and St Joseph's Parishes and to St John's Presbyterian Church for allowing us to use their Churches for Sunday Mass. This has enabled us to continue as a worshipping community.

During the past year I have heard many stories of how much people miss being able to go into St Mary of the Angels Church. There are the obvious ones: families not being able to celebrate their special occasions such as baptisms and weddings. Many elderly people have told me of their fear that the Church will not be open again for their funerals. However, there are other stories from people whom I never knew visited the Church. One from a non-catholic man who would come each morning before work just to enjoy the peace and calm the Church offered before a busy day at the office. People who came to light a candle in prayer for a particular need or person. These stories help me even more to understand why St Mary of the Angels is:

'an oasis in the middle of a busy city'

All this gives me energy to focus on the challenging task of raising the money to have the Church strengthened to the best possible seismic standard. We have the Resource and Building Consent to do the work - now the hard part: raising the necessary funds.

We need support from the whole of Wellington and throughout New Zealand if we are going to achieve the goal of completing this strengthening work. The Church cannot reopen until it is done. It will involve generosity from each and every one of us.

Please keep this project in your prayers. We can only begin the work when sufficient funds have been raised.

Fr Barry Scannell sm
Parish Priest

INVEST IN YOUR FAITH

CATHOLIC DEVELOPMENT FUND of WELLINGTON

This Week's Readings

| | | |
|--|----------------|------------------|
| First Reading | Kings | 3:5. 7-12 |
| <i>You have asked for wisdom.</i> | | |
| Second Reading | Romans | 8:28-30 |
| <i>He predestined us to become true images of his Son.</i> | | |
| Gospel Reading | Matthew | 13:44-52 |
| <i>He sells everything he owns and buys the field.</i> | | |

Next Week's Readings

| | | |
|-----------------------|----------------|--------------------|
| First Reading | Is | 55:1-3 |
| Psalm | 144 | |
| Second Reading | Rom | 8:35, 37-39 |
| Gospel Reading | Matthew | 14:13-21 |

Last Sunday's Collection

| | |
|------------------|---------|
| Total | \$4,707 |
| Parish Expenses | \$3,342 |
| Support of House | \$1,365 |



Planned Giving and Tax Receipts

If you would like to join the St Mary of the Angels Planned Giving Scheme please contact the Parish Office. A tax rebate of 33.3% may be claimed on all your contributions.

Adult Education in the Faith Ministry

First Level Course: *An Introduction to Christian Spirituality*

Thursday 31st July, 7.30pm - 9.30pm at Pa Maria, 78 Hobson Street. **Theme:** Spirituality and the Moral Life
Session 7: Evil, Sin and the Seven Deadly Sins (Part 2)

Second Level Course: *The Incomparable God - the Testimony of Israel*

Wednesday 30th July, 5.30pm - 7.30pm in the Presbytery Boardroom. **Theme:** Israel's Counter Testimony
Session 1: Cross examining Israel's core testimony (Part 1) - A1. Hiddenness, Ambiguity, Negativity; A2. Israel's questions to God.

Mass has been offered for:

Recently Deceased: Veronica Nolan, Vincent Meagher, Josefina Fronda Loria, Su Yen Bok

Anniversaries: Ellen O'Neill, Marian Gibbs, Sheila Fama, Toni Brennan, Eileen Gregory, James Healy, Jadwiga Kolaczynska, Bernard Lynch, Marion Alexander, Peter Schmidt, Agnes Mora, Thomas O'Shaughnessy

Prayers for the Sick: Jeanette Parker, Richard Wright, Ann Ross, Fr Craig Larkin sm, Barbara Ross, Losalia Leo, Patricia Smyth, Maureen McDonald, Jack Body, Philip Birch, John Foden, Eoghan Grimes, Joanna Veltman, Kathleen Phelan, Imelda Reeve, Jan Tuinman
Please remember in your prayers, these and the other sick of the Parish. If you know of anyone who is confined to their home or who needs a visit with Holy Communion, please contact Sister Frances at the Parish Office.

Responsorial Psalm 118

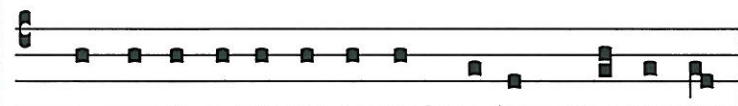
R. Lord, I love your commands.

My part, I have resolved, O Lord, is to obey your word.
The law from your mouth means more to me than silver and gold. **R.**

Let your love be ready to console me by your promise to your servant.
Let your love come to me and I shall live for your law is my delight. **R.**

That is why I love your commands more than finest gold.
That is why I rule my life by your precepts: I hate false ways. **R.**

Your will is wonderful indeed; therefore I obey it.
The unfolding of your word gives light and teaches the simple. **R.**



Quomodo di-le-xi le-gem tu-am Domi-ni.

O how I have loved thy law, O Lord!

Prayer for Seismic Strengthening Work

Gracious God, Creator of the Universe, you made us in your own image and likeness.

You gave us wisdom and understanding, grateful hearts and creative minds.

We pray that our beautiful Church will be strengthened against the peril of earthquake through the generosity of parishioners, the community of Wellington and people throughout New Zealand.

We ask, Lord, that you abundantly bless those who have already donated funds, skill and expertise to this project.

May St Mary of the Angels Church be a symbol of a unified community that will gather to praise and thank you.

Mary our Mother, pray for us.

Vocation Weekend at Marist Seminary

For the third time this year a weekend is being held at the Marist Seminary in Auckland. It is for men between the ages of 18-33, who want a closer look at religious life and priesthood. Friday 1st August at 7.30pm - Sunday 3rd August. Cost: \$20 koha. Could one of your family serve God and God's people in this way? Please encourage him. More info on facebook.com/Marists or phone the organiser Fr Peter McAfee anytime (09) 360 0923 or speak to one of the priests. Thank you.

Adult Rite of Christian Initiation (RCIA)

Perhaps you know someone who is curious about the Catholic Faith? The Adult Rite of Christian Initiation (RCIA) is the process through which adults are gradually introduced to the Catholic faith and way of life. St Mary of the Angels is holding an introductory evening on Tuesday 19th August at 7.15pm in the Parish Hall. If you would like more information or wish to enrol please contact the Parish Office 473 8074 or email: smoaoffice@xtra.co.nz. Parishioners, please invite someone whom you know to be interested in our Catholic Faith and pray for the RCIA Candidates, Sponsors, and Leaders.

SMAYACs Prayer Group

All young adults and the young at heart are invited to a time of prayer, readings and reflection every Thursday at 6pm in the Parish Hall.

Theology on Tap

St Mary of the Angels Young Adults invite everyone to join them at tonight's Theology on Tap session, 6.30pm in the pool room at Hotel Bristol on Cuba St. This month Br Kieran Fenn will speak about "An Intelligent Understanding of Gospel Differences". Br Kieran is a Marist Brother, based at The Grove in Lower Hutt. He works in Adult Education, teaching scripture, and also helps with the 'Faith and Light' group.

St Catherine's College Open Day

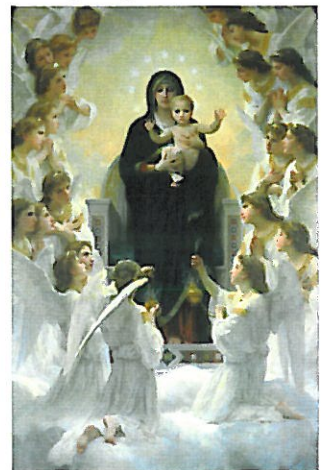
Prospective pupils and parents are invited to St Catherine's Open Day, Wednesday 30th July, 14 Upper Bourke St, Kilbirnie. Come along and find out the benefit's of joining a smaller college. (04) 939 8988.

Taize Prayer

The Sisters of Compassion are offering Taize Prayer on the first Friday of each month from 7pm-8pm at the Home of Compassion Chapel in Island Bay. The first day will be Friday 1st August 2014. All are welcome to join the prayer group.

Vespers for the Feast of the Assumption

All are warmly invited to join the choir of St Mary of the Angels as they celebrate the Feast of the Assumption with a full sung Vespers service at 7.30pm, Friday 15th August. This year it will be held in St Joseph's Church, Mt Victoria. The liturgy consists of the Psalms with their Gregorian antiphons, and Palestrina's setting of the Magnificat. It lasts about 50 minutes, and is followed by a short concert of choral music, where the choir will sing music from their traditional repertoire of Peter Philips, Palestrina and Byrd, including settings of Ave Maria by Victoria, Rachmanninov and Stravinsky.



LT McGuinness LIMITED
BUILDING CONTRACTORS
9 Francis Place,
PO Box 9639, Wellington
Phone (04) 384 8455 Fax (04) 801 8455
Email: ltm@mcguinness.co.nz

Little Peckish Cafe
Feeling a little peckish?
Dukes Arcade · Great food, coffee, service
Office catering available
Phone 499 7769 · Mobile 0274 461 650

NEW WORLD WELLINGTON CITY
279 WAKEFIELD ST.
OPEN 7 DAYS | 7AM - MIDNIGHT
WWW.WGTNCITYNEWWORLD.CO.NZ

CDF
Catholic Development Fund of Wellington

Save with the CDF and you'll be helping the needy; each year all of CDF's operating surplus goes to the Archdiocese for social caring and pastoral services.

Saving with us helps your Archdiocese.
Call 0800 4 233 233 or visit www.cdf.co.nz

