

For Your Diaries : 2014

8 June, Ecumenical Pentecost Vespers

St Mary of the Angels Choir invite everyone to join with them at the Ecumenical Pentecost Vespers celebration held at St Peter's Anglican Church, Willis St, on Sunday 8th June at 7.30pm. This beautiful Vespers celebration will feature Stanford's Opus 115 Evening Canticles, plainchant, Anglican chant and congregational hymns. All are welcome.

20 - 21 June, Marriage Enrichment Retreat

The Josephite Retreat Centre in Whangnui is holding a Marriage Enrichment Weekend for married & de facto couples who wish to spend some valuable time exploring their relationship. The retreat runs from Friday 20 June, 7pm - 9pm & Saturday 21 June, 10am - 4pm and will be lead by Debbie & Andrew Jameson of Palmerston North. Contact Pam Hopper for more information. Phone 06 345 5047 ext 3, email ssjoseph@ssj.org.nz or visit www.ssj.org.nz

21 June, Dove Catholic Fellowship for women

Dove Catholic Fellowship for women invites all women to their meeting on Saturday 21st June 1.15- 3.30pm at Connolly Hall (off Hill St) Thorndon. Speaker: Helen McGhie. Join us for praise and worship, solid biblical teaching, prayer ministry and fellowship. Enquiries Sandra 475 5541 www.dove.org.nz

21 June, Open Arms Remembrance Service

All are invited to a memorial service at 3pm on Saturday 21st June at Sts Peter and Paul's Church, Knights Rd, Lower Hutt. The service is an opportunity to pray and reflect on those whose lives were very brief - children lost during pregnancy or soon after. All are welcome to attend and refreshments will follow the service.

29 June, St Patrick's College Kilbirnie, Open Day

Prospective pupils and parents are invited to St Patricks College Open Day, 581 Evans Bay Parade, Kilbirnie, on Sunday 29th June, 1.30-4pm. The Rector will address visitors at 1.30pm in the Hall and tours of the College will follow. For more information phone: (04) 939 3070 or email admin@stpats.school.nz or visit www.stpats.school.nz

Traditional Latin Mass is celebrated each Sunday at 12.30pm at Pa Maria, 78 Hobson Street, Thorndon. Enquiries: Neil Coup 021896924.

Quality Te Aro Offices 5-7 Vivian Street, Wellington

Great location close to Cafe district
Busy arterial road
Air conditioned
Car parking available

Office suites available at an affordable price. Semi-serviced suites (approx 18sqm) that are fully furnished. There is also a company floor area (approx 200sqm) with 5x partitioned offices, Board room and Meeting room. Shared kitchen and shower facilities. Car parking available in the building at an additional rate.

This is a must see for new businesses on a budget. Earthquake Engineering Evaluation IEP Report NBS 80 %

Contact by e-mail for further information: mariabaldock@gmail.com

This newsletter is kindly sponsored by:
Michael Burrowes
of Burrowes and Company
Barristers and Solicitors
phone (04) 473 7733

BURROWES
and Company

Barristers and Solicitors

GLOBUS RELIGIOUS TRAVEL

Faith-based travel is the perfect way to build community. Explore the stories, follow in the footsteps of spiritual leaders and discover the roots of our faith.

For more information call **0800 Globus** or speak with *St Mary of the Angels* parishioner **Tracey Driscoll**, Area Sales Manager, Globus family of brands.

Please Support our Sponsors



Is dealing with a
**Locally Owned
Funeral Director**
important to you?



Wellington
56 Onepu Road, Kilbirnie
Telephone 387-8301
Email: harbour@funeral-link.co.nz
www.harbourcityfunerals.co.nz

WEST PLAZA HOTEL LOCATION • COMFORT • STYLE

Weekend Special

\$125

One night's stay & cooked breakfast for two

Available Friday, Saturday and Sunday
Subject to availability

110 - 116 Wakefield Street, Wellington
p 0800 731 444
e reservations@westplaza.co.nz
book now westplaza.co.nz



Christian Supplies

www.christiansupplies.co.nz

- See our monthly newsletter in 'The Angelus'
- Freephone 0508 988 988 - Freefax 0508 988 989
email: order@pleroma.org.nz

GLOBUS

Sistine Chapel, Vatican City

The Angelus

St Mary of the Angels Parish

Church and Presbytery:

17 Boilcott Street,

Wellington Central

Telephone: 473 8074

Parish website: www.smoa.org.nz

St Mary of the Angels is a diverse community which seeks to praise and thank God in a place of calm and beauty and strives to be Christ alive in Central Wellington

Parish Priest

Fr Barry Scannell SM

smoapp@xtra.co.nz

Assistant Priest

Fr Tom O'Connor SM

Adult Education

Fr Michael Young SM

Pastoral Worker

Sr Frances Gibbs CSB

Director of Music

Robert Oliver

robert.oliver@paradise.net.nz

Parish Accountant

Jeanette Temelo

smoamanager@xtra.co.nz

Parish Office

smoaoffice@xtra.co.nz

MASSES

Sunday 7am, 9am, 11am, 5pm

Monday to Friday 7:30am, 12:05pm, & 5:15pm

Saturday 11am

EACH MONTH

4th Saturday 11am Mass with Sacrament of Anointing

ADORATION

Monday to Friday 6:45am-7:30am

Friday 11am-noon

RECONCILIATION

Monday to Thursday 11:30am-noon
12:30pm-1:00pm
4:30pm-5:00pm

Friday 11:00am-noon
12:30pm-1:00pm
4:30pm-5:00pm

Saturday 10:30am-11:00am
4:00pm-5:00pm

8th June 2014, Pentecost Sunday - Year A

Ecumenical Pentecost Vespers

Tonight at 7.30pm we gather at St Peter's Anglican Church in Willis Street for Ecumenical Pentecost Vespers. This has been a great tradition for many years between our own Church and the Churches of St Peter's and St John's.

Please make an effort to attend this ecumenical gathering. It is very important for us as a Catholic Parish to show our solidarity with our Anglican and Presbyterian neighbours especially when they have been so generous to us since the Church closed.

Congratulations

One of our parishioners, Judge Shonagh Kenderdine, was honoured with the Queen's Service Order (QSO) for services to the judiciary in the Queen's Birthday Honours list.

Shonagh is an old girl of Erskine College, she obtained an MA in History from Otago University in 1959 and after several years overseas studied law at Auckland University, graduating in 1980.

Shonagh then enjoyed a distinguished career in environmental law. She was a Senior Counsel at the Crown Law Office, worked as a private lawyer and as a lecturer at Victoria and Sydney Universities. Her expertise and interests encompassed cultural, historical and environmental matters, notably The Treaty of Waitangi and climate change.

In 2006 she was the recipient of the New Zealand Resource Management Law Association's Award for outstanding judicial leadership in the development of the law, theory and practice of resource management. After retiring from the Bench, Shonagh was appointed the Chair of the Board of the NZ Historic Places Trust. She is a Patron of the Futuna Chapel Charitable Trust.

We warmly congratulate Shonagh on this well deserved award.

Fr Barry Scannell sm,
Parish Priest

INVEST IN YOUR FAITH

CATHOLIC DEVELOPMENT FUND of WELLINGTON

This Week's Readings

First Reading Acts 2:1-11
They were filled with the Holy Spirit, and began to speak different languages.

Second Reading 1 Cor 12:3-7, 12-13
In the one Spirit we were all baptised, making one body.

Gospel Reading John 20:19-23
As the Father sent me, so I send you: Receive the Holy Spirit.

Next Week's Readings

First Reading Ex 34:4-6
Psalm Dan 3:52-56
Second Reading 2 Cor 13:11-13
Gospel Reading John 3:16-18

Last Sunday's Collection

Total	\$5,075
Parish Expenses	\$3,603
Support of House	\$1,472



Planned Giving and Tax Receipts

If you would like to join the St Mary of the Angels Planned Giving Scheme please contact the Parish Office. A tax rebate of 33.3% may be claimed on all your contributions.

St Mary of the Angels Choir

The St Mary of the Angels Choir is seeking new members. The choir sings Gregorian chant and polyphony at the 12pm Mass each Sunday. If you would like to join the choir please contact Robert Oliver: phone 934 2296 or email robert.oliver@paradise.net.nz, or approach a choir member after Mass. There is no audition.

Mass has been offered for:

Recently Deceased: Colleen Pocock, Mary Egan, Su Yen Bok

Anniversaries: Nigel Gini, Hilary Proctor, Marie Robinson, Fr. Alex Taylor sm, Peter Gilbert, Da van Luyn, Kevin Fouhy, Vic Valdez, Clare Abbott, William Shirer, Lindsay Haas, Bruno Grinskis, Maxwell Fernie, Jim Sweeney, Margaret Doe, Robert Bell, Anton Paris

Prayers for the Sick: Richard Wright, Ann Ross, Fr Craig Larkin sm, Barbara Ross, Losalia Leo



Please remember in your prayers, these and the other sick of the Parish. If you know of anyone who is confined to their home or who needs a visit with Holy Communion, please contact Sister Frances at the Parish Office.

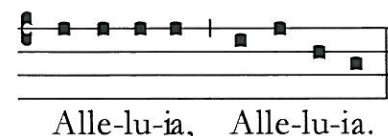
Responsorial Psalm 103

R. Lord, send out your Spirit, and renew the face of the earth.

Bless the Lord, my soul!
Lord God, how great you are,
How many are your works, O Lord!
In wisdom you have made them all.
The earth is full of your riches. **R**

You take back your spirit, they die,
returning to the dust from which they came.
You send forth your spirit, they are created;
and you renew the face of the earth. **R**

May the glory of the Lord last for ever!
May the Lord rejoice in his works!
May my thoughts be pleasing to him.
I find my joy in the Lord. **R**



Alle-lu-ia, Alle-lu-ia.

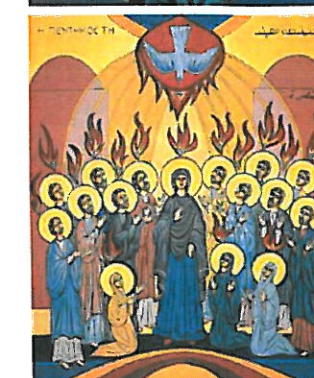
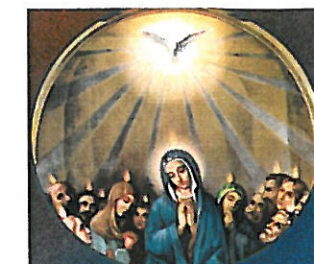


Detail from El Greco's 'Pentecost'

Come Holy Spirit - Prayer for Pentecost

Come Holy Spirit;
fill the hearts of your faithful.
Kindle in them, the fire of your love.
Send forth your spirit
and they shall be created.
And you will renew
the face of the earth.
Lord, by the light of the Holy Spirit,
you have taught
the hearts of your faithful.
In the same Spirit,
help us to relish what is right
and always rejoice in your consolation.
We ask this through Christ, our Lord.
Amen.

Haere mai e te Wairua Tapu,
Whakakūia ngā ngākau o āu tāngata whakapono.
Whakaūria ki roto i a rātou te kōpura o tōu aroha.
Tonoa mai tōu Wairua,
ā, ka hou ō mātou ngākau,
Ka hou anō hoki te mata o te whenua.
Kia inoi tātou,
E te Atua, nāu i tonono mai te Wairua Tapu
ki āu tāngata whakapono
hei whakamārama hei whakaako i ō rātou ngākau:
tukua mai taua Wairua
kia painga ai e mātou ngā mea tika,
ā kia hari tonu ai i tāna whakamarietanga.
Mā to mātou Ariki, ma Henu Karaiti.
Āmene.



Prayer for Seismic Strengthening Work

Gracious God, Creator of the Universe,
you made us in your own image and likeness.

You gave us wisdom and understanding,
grateful hearts and creative minds.

We pray that our beautiful Church will be
strengthened against the peril of earthquake
through the generosity of parishioners,
the community of Wellington and people
throughout New Zealand.

We ask, Lord, that you abundantly bless those
who have already donated funds,
skill and expertise to this project.

May St Mary of the Angels Church
be a symbol of a unified community that
will gather to praise and thank you.

Mary our Mother, pray for us.

SMAYACs Prayer Group

All young adults and the young at heart are invited to a
time of prayer, readings and reflection every Thursday at
6pm in the Parish Hall.

'The Shortest Lives on the Shortest Day' Open Arms Remembrance Service

Greenstone Doors Charitable Trust, in association with
SANDS and the Bereavement Group from Sts Peter and
Paul's Parish, invite you to a remembrance service at
3pm, Saturday 21 June at Sts Peter and Paul's Church,
Knights Rd, Lower Hutt.

The service is an opportunity to pray and reflect on
those whose lives were very brief - children lost during
pregnancy or soon after. All are welcome to attend and
refreshments will follow the service.

TO KEEP UP TO DATE WITH EVENTS AROUND THE
ARCHDIOCESE VISIT WWW.WN.CATHOLIC.ORG.NZ

Adult Education in the Faith Ministry

First Level Course: *Introduction to Christian Spirituality*

12th June, 7.30pm - 9.30pm at Pa Maria, 78 Hobson St. **Theme:** Spirituality and the Moral Life
Session 2: Faith, Hope and Love (Part 2)

Second Level Course (Restricted): *The Incomparable God - The Testimony of Israel*

11th June 5.30pm - 7.30pm in the Presbytery Boardroom. **Theme:** Israel's Core Testimony.
Session 17: E.4 A Proximate Resolution in Righteousness - continued; E.5. Summary Observations



Save with the CDF and you'll be helping the needy;
each year all of CDF's operating surplus goes to the
Archdiocese for social caring and pastoral services.

Saving with us helps your Archdiocese.
Call 0800 4 233 233 or visit www.cdf.co.nz



LT McGuinness LIMITED
BUILDING CONTRACTORS
9 Francis Place,
PO Box 9639, Wellington
Phone (04) 384 8455 Fax (04) 801 8455
Email: ltm@mcguinness.co.nz

Little Peckish Cafe
Feeling a little peckish?
Dukes Arcade · Great food, coffee, service
Office catering available
Phone 499 7769 · Mobile 0274 461 650

NEW WORLD WELLINGTON CITY
279 WAKEFIELD ST.
OPEN 7 DAYS | 7AM - MIDNIGHT
WWW.WGTNCITYNEWWORLD.CO.NZ