

For Your Diaries : 2014

28 May St Catherine's College Open Day

Prospective pupils and parents are invited to St Catherine's Open Day, 14 Upper Bourke St, Kilbirnie. The first open day is Wednesday 28 May, 1pm - 2.30pm & 6pm-7pm. The second open day is on Wednesday 30 July. Come along and find out the benefit's of joining a smaller college. (04) 939 8988.

8 June, Young Church Ministries Mass

You are invited to celebrate Pentecost with Archbishop John at the Young Church Mass on Sunday 8th June at 7pm at Sacred Heart Cathedral. Young Church Masses are for everyone – teenagers, young adults, families and the young at heart. For more details please contact youth@wn.catholic.org.nz or phone 4961731.

8 June, Challenge 2000 Quiz Night

Challenge 2000 invite everyone to their Quiz Night at the Johnsonville Rugby Clubrooms, 80 Helston Rd, Paparangi on Sunday 8th June at 6.45pm. Come along to this great evening and put your knowledge to a good cause! Eight people per team; \$12 per person. Make up a team or contact us and we will put you in a team. To register your team contact Challenge 2000 Ph: (04) 477 6827 or email challenge2000@xtra.co.nz

13 – 15 June, St Anthony's School Huntly, 100 Year Reunion

St Anthony's Catholic School, Huntly will celebrate it's 100 Year Anniversary on 13th – 15th June 2014. All past students and teaching staff are invited to attend this reunion. For more information visit the website www.stanthony.school.nz, email stanthony100years@hotmail.com, or contact St Anthony's Catholic School 07 8288516.

21 June, Open Arms Remembrance Service

All are invited to a memorial service at 3pm on Saturday 21st June at Sts Peter and Paul's Church, Knights Rd, Lower Hutt. The service is an opportunity to pray and reflect on those whose lives were very brief - children lost during pregnancy or soon after. All are welcome to attend and refreshments will follow the service.

Traditional Latin Mass is celebrated each Sunday at 12.30pm at Pa Maria, 78 Hobson Street, Thorndon. Enquiries: Neil Coup 021896924.

Quality Te Aro Offices

5-7 Vivian Street, Wellington

Great location close to Cafe district
Busy arterial road
Air conditioned
Car parking available

Office suites available at an affordable price. Semi-serviced suites (approx 18sqm) that are fully furnished. There is also a company floor area (approx 200sqm) with 5x partitioned offices, Board room and Meeting room. Shared kitchen and shower facilities. Car parking available in the building at an additional rate.

This is a must see for new businesses on a budget. Earthquake Engineering Evaluation IEP Report NBS 80 %

Contact by e-mail for further information: mariabaldock@gmail.com

This newsletter is kindly sponsored by:
Michael Burrowes
of Burrowes and Company
Barristers and Solicitors
phone (04) 473 7733

BURROWES
and Company

Barristers and Solicitors

Please Support our Sponsors



Is dealing with a
**Locally Owned
Funeral Director**
important to you?



Wellington
56 Onepu Road, Kilbirnie
Telephone 387-8301
Email: harbour@funeral-link.co.nz
www.harbourcityfunerals.co.nz

WEST PLAZA HOTEL

LOCATION • COMFORT • STYLE

Weekend Special

\$125

One night's stay & cooked breakfast for two

Available Friday, Saturday and Sunday
Subject to availability

110 – 116 Wakefield Street, Wellington
p 0800 731 444
e reservations@westplaza.co.nz
book now westplaza.co.nz



Christian Supplies

www.christiansupplies.co.nz

- See our monthly newsletter in 'The Angelus'
- Freephone 0508 988 988 - Freefax 0508 988 989
email: order@pleroma.org.nz

GLOBUS RELIGIOUS TRAVEL

Faith-based travel is the perfect way to build community. Explore the stories, follow in the footsteps of spiritual leaders and discover the roots of our faith.

For more information call **0800 Globus** or speak with
St Mary of the Angels parishioner **Tracey Driscoll**,
Area Sales Manager, Globus family of brands.

Sistine Chapel, Vatican City

The Angelus

St Mary of the Angels Parish

Church and Presbytery:

17 Boulcott Street,

Wellington Central

Telephone: 473 8074

Parish website: www.smoa.org.nz

St Mary of the Angels is a diverse community which seeks to praise and thank God in a place of calm and beauty and strives to be Christ alive in Central Wellington

Parish Priest

Fr Barry Scannell SM

smoapp@xtra.co.nz

Assistant Priest

Fr Tom O'Connor SM

Adult Education

Fr Michael Young SM

Pastoral Worker

Sr Frances Gibbs CSB

Director of Music

Robert Oliver

robert.oliver@paradise.net.nz

Parish Accountant

Jeanette Temelo

smoamanager@xtra.co.nz

Parish Office

smoaoffice@xtra.co.nz

MASSES

Sunday 7am, 9am, 11am, 5pm

Monday to 7:30am, 12:05pm,
Friday & 5:15pm

Saturday 11am

EACH MONTH

4th Saturday 11am Mass with
Sacrament of Anointing

ADORATION

Monday to Friday 6:45am-7:30am

Friday 11am-noon

RECONCILIATION

Monday to 11:30am-noon
Thursday 12:30pm-1:00pm
4:30pm-5:00pm

Friday 11:00am-noon
12:30pm-1:00pm
4:30pm-5:00pm

Saturday 10:30am-11:00am
4:00pm-5:00pm

25th May 2014, 6th Sunday of Easter - Year A

Sacrament of Confirmation

On Saturday 21 June at the Vigil Mass at St Teresa's Church, Karori, the sacrament of Confirmation will be celebrated for our Pastoral Area by Archbishop John for the children who are participating in the First Sacraments Programme.

It is also an opportunity for any adults in the Parish who have not been confirmed to take this opportunity of receiving this sacrament. A short preparation programme will be held if there is sufficient interest.

If you are interested in being confirmed please contact a member of the Pastoral Team by Sunday 1 June.

Seismic Strengthening of the Church

We have received Resource Consent from the Wellington City Council and we expect to receive Building Consent in the next week for Stage I of the seismic strengthening work on our Church. This represents an important milestone and is the result of many months of commitment and hard work from our consultants.

The cost to undertake Stage 1 of the project is 3 million dollars. The focus of our initial fundraising planning is to secure this amount so that work can begin. Please keep this in your prayers.

Ecumenical Pentecost Vespers

St Mary of the Angels Choir invite everyone to join with them at the Pentecost Vespers celebration on Sunday 8th June at 7.30pm. This year the service will be held at St Peter's Anglican Church, Willis St.

This Ecumenical service sees our choir combine with the choirs from St John's Presbyterian Church and St Peter's Anglican Church in a traditional Anglican Evensong. This beautiful Vespers celebration will feature Stanford's Opus 115 Evening Canticles, plainchant, Anglican chant and congregational hymns. All are welcome.

Fr Barry Scannell sm,
Parish Priest

INVEST IN YOUR FAITH

CATHOLIC DEVELOPMENT FUND of WELLINGTON

This Week's Readings

First Reading Acts 8:5-8, 14-17
They laid hands on them, and they received the Holy Spirit.

Second Reading 1 Peter 3:15-18
In the body he was put to death, in the spirit he was raised to life.

Gospel Reading John 14:15-21
I shall ask the Father and he will give you another Advocate.

Next Week's Readings

First Reading Acts 1:1-11
Psalm 46
Second Reading Eph 1:17-23
Gospel Reading Matthew 28:16-20

Last Sunday's Collection

Total	\$4,584
Parish Expenses	\$3,255
Support of House	\$1,329



Planned Giving and Tax Receipts

If you would like to join the St Mary of the Angels Planned Giving Scheme please contact the Parish Office. A tax rebate of 33.3% may be claimed on all your contributions.

'The Shortest Lives on the Shortest Day' - Open Arms Remembrance Service

Greenstone Doors Charitable Trust, in association with SANDS and the Bereavement Group from Sts Peter and Paul's Parish, invite you to a remembrance service at 3pm, Saturday 21 June at Sts Peter and Paul's Church, Knights Rd, Lower Hutt. The service is an opportunity to pray and reflect on those whose lives were very brief - children lost during pregnancy or soon after. All are welcome to attend and refreshments will follow the service.

Mass has been offered for:

Recently Deceased: Mary Egan, Su Yen Bok

Anniversaries: Maxwell Fernie, Jim Sweeny, Mary Davidson, Brian Flynn, Margaret Fogarty, Michael Cenek, Ruth McKay, Margaret Doe, Robert Bell, Anton Paris, John Smith, Oinah MacPherson, Michael Mahoney, Michael John O'Sullivan, Jane Martin

Prayers for the Sick: Jack Body, Richard Wright, Philip Birch, John Foden, Ann Ross, Lisa Alo, Maureen McDonald, Fr Craig Larkin sm, Reny Thomas, Colleen Pocock, Barbara Ross, Helen Havasi, Losalia Leo, Patricia Smyth, Dulcie Campbell, Joanna Veltman, Kathleen Phelan.



Please remember in your prayers, these and the other sick of the Parish. If you know of anyone who is confined to their home or who needs a visit with Holy Communion, please contact Sister Frances at the Parish Office.

Responsorial Psalm 65

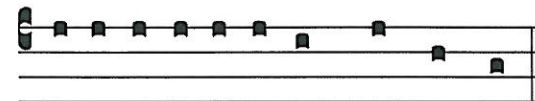
R. Let all the earth cry out to God with joy.

Cry out with joy to God all the earth,
 O sing to the glory of his name.
 O render him glorious praise.
 Say to God: 'How tremendous your deeds!' **R**

'Before you all the earth shall bow;
 shall sing to you, sing to your name!
 Come and see the works of God,
 tremendous his deeds among men. **R**

He turned the sea into dry land,
 they passed through the river dry-shod.
 Let our joy then be in him;
 he rules for ever by his might. **R**

Come and hear, all who fear God.
 I will tell what he did for my soul:
 Blessed be God who did not reject my prayer
 nor withhold his love from me. **R**



Jubilá-te Deo, om-nis ter-ra:

Shout with joy to God, all the earth.

Prayer for Seismic Strengthening Work

Gracious God, Creator of the Universe,
 you made us in your own image and likeness.

You gave us wisdom and understanding,
 grateful hearts and creative minds.

We pray that our beautiful Church will be
 strengthened against the peril of earthquake
 through the generosity of parishioners,
 the community of Wellington and people
 throughout New Zealand.

We ask, Lord, that you abundantly bless those
 who have already donated funds,
 skill and expertise to this project.

May St Mary of the Angels Church
 be a symbol of a unified community that
 will gather to praise and thank you.

Mary our Mother, pray for us.

SMAYACs Prayer Group

All young adults and the young at heart are invited to a
 time of prayer, readings and reflection every Thursday at
 6pm in the Parish Hall.

Theology on Tap

All are welcome to join the St Mary of the Angels Young
 Adults for Theology on Tap, tonight 25th May at 6.30pm
 at Hotel Bristol, Cuba St. This month's guest speaker is
 Fritz Mascarenhas who will speak on the theme: "Come
 unto Me all ye that labour and are heavy laden and I will
 give you rest." Mathew 11:28.

Fritz previously worked as a Navigating Officer in the
 Merchant Marine when he had an experience of Jesus that
 radically changed his life. He resigned his job and
 devoted his life entirely to sharing the Good News of
 Jesus Christ. Presently Fritz is the Director of the
 Institute for World Evangelisation, ICPE Mission in
 Bangalore, India.

MISSIONZ Pontifical Appeal

Missionz is the New Zealand national office of the worldwide Pontifical Mission Societies. The objective of Missionz is to promote awareness of the mission of the Catholic Church - to present the good news of Jesus Christ to all peoples, and to generate spiritual, material and financial support for those working in mission and third world territories. The Pontifical Mission Societies have the common aim of assisting the Holy Father, in spreading missionary awareness among priests, religious, adults and children; encouraging aid to the poor, and gathering financial support for different projects in third world countries. The funds collected during the year by the Pontifical Mission Societies are sent directly to mission dioceses in need, as decided at Council in Rome each May.



The three societies Pope Francis is calling for us to support are:

Propagation of the Faith - enabling missionaries to be more effective in their works of evangelization.

St Peter the Apostle - funding the formation of seminarians and religious in mission territories.

Holy Childhood - supporting the health and religious formation needs of mission children.

For more information visit www.missionz.co.nz, email mission@missionz.co.nz.

Direct credit deposits can be made to: ANZ 060411-0021447-00

Adult Education in the Faith Ministry

First Level Course: Introduction to Christian Spirituality

29th May, 7.30pm - 9.30pm at Pa Maria, 78 Hobson St. **Theme:** Spirituality and the Human Person

Session 6: The Body, the Visible and Tangible

Second Level Course (Restricted): The Incomparable God - The Testimony of Israel

28th May, 5.30pm - 7.30pm in the Presbytery Boardroom. **Theme:** Israel's Core Testimony.

Session 15: E.1. The Disjunctive Rendering of God; E.2. Responses to the Disjunctive Rendering of God.



Save with the CDF and you'll be helping the needy;
 each year all of CDF's operating surplus goes to the
 Archdiocese for social caring and pastoral services.

Saving with us helps your Archdiocese.
 Call 0800 4 233 233 or visit www.cdf.co.nz



LT
McGuinness
 BUILDING CONTRACTORS
 9 Francis Place,
 PO Box 9639, Wellington
 Phone (04) 384 8455 Fax (04) 801 8455
 Email: ltm@mcguinness.co.nz

Little Peckish
 Café
 Feeling a little peckish?
 Dukes Arcade • Great food, coffee, service
 Office catering available
 Phone 499 7769 • Mobile 0274 461 650

NW
NEW WORLD
WELLINGTON CITY
 279 WAKEFIELD ST.
 OPEN 7 DAYS | 7AM - MIDNIGHT
WWW.WGTNCITYNEWWORLD.CO.NZ