

For Your Diaries : 2014

21 May, St Mary's College Open Day

St Mary's College invites all prospective students to the College Open Day on Wednesday 21st May from 8am - 10am. For further information, contact Principals Assistant 473 5554 ext 844 www.st-marys-wellington.school.nz

28 May St Catherine's College Open Day

Prospective pupils and parents are invited to St Catherine's Open Day, 14 Upper Bourke St, Kilbirnie. The first open day is Wednesday 28 May, 1pm - 2.30pm & 6pm - 7pm. The second open day is on Wednesday 30 July. Come along and find out the benefit's of joining a smaller college. (04) 939 8988.

11 June, Broken Bay Institute E-Conference

The Broken Bay Institute are pleased to announce the topic for the 10th E-Conference: 'Pope Francis: Modelling the Ministry of St Peter'. The E-Conference will take place on Wednesday 11 June from 12pm - 5pm (NZST) and will include five outstanding speakers. For further details and to register visit www.bbi.catholic.edu.au/adult-faith

13 - 15 June, St Anthony's School Huntly, 100 Year Reunion

St Anthony's Catholic School, Huntly will celebrate it's 100 Year Anniversary on 13th - 15th June 2014. All past students and teaching staff are invited to attend this reunion. For more information visit the website www.stanthonys.school.nz, email stanthonys100years@hotmail.com, or contact St Anthony's Catholic School 07 8288516.

20 - 21 June, Marriage Enrichment Retreat

The Josephite Retreat Centre in Whangnui is holding a Marriage Enrichment Weekend for married & de facto couples who wish to spend some valuable time exploring their relationship. The retreat runs from Friday 20 June, 7pm - 9pm & Saturday 21 June, 10am - 4pm and will be lead by Debbie & Andrew Jameson of Palmerston North. Contact Pam Hopper for more information. Phone 06 345 5047 ext 3, email ssjoseph@ssj.org.nz or visit www.ssj.org.nz

29 June, St Patrick's College Kilbirnie, Open Day

Prospective pupils and parents are invited to St Patricks College Open Day, 581 Evans Bay Parade, Kilbirnie, on Sunday 29th June, 1.30-4pm. The Rector will address visitors at 1.30pm in the Hall and tours of the College will follow. For more information phone: (04) 939 3070 or email admin@stpatricks.school.nz or visit www.stpatricks.school.nz

Traditional Latin Mass is celebrated each Sunday at 12.30pm at Pa Maria, 78 Hobson Street, Thorndon. Enquiries: Neil Coup 021896924.

Quality Te Aro Offices 5-7 Vivian Street, Wellington

Great location close to Cafe district
Busy arterial road
Air conditioned
Car parking available

Office suites available at an affordable price. Semi-serviced suites (approx 18sqm) that are fully furnished. There is also a company floor area (approx 200sqm) with 5x partitioned offices, Board room and Meeting room. Shared kitchen and shower facilities. Car parking available in the building at an additional rate.

This is a must see for new businesses on a budget. Earthquake Engineering Evaluation IEP Report NBS 80 %

Contact by e-mail for further information: mariabaldock@gmail.com

This newsletter is kindly sponsored by:
Michael Burrowes
of Burrowes and Company
Barristers and Solicitors
phone (04) 473 7733

**BURROWES
and Company**

Barristers and Solicitors

GLOBUS RELIGIOUS TRAVEL

Faith-based travel is the perfect way to build community. Explore the stories, follow in the footsteps of spiritual leaders and discover the roots of our faith.

For more information call **0800 Globus** or speak with **St Mary of the Angels** parishioner **Tracey Driscoll**, Area Sales Manager, Globus family of brands.

Please Support our Sponsors



Is dealing with a
**Locally Owned
Funeral Director**
important to you?



Wellington
56 Onepu Road, Kilbirnie
Telephone 387-8301
Email: harbour@funeral-link.co.nz
www.harbourcityfunerals.co.nz

WEST PLAZA HOTEL

LOCATION • COMFORT • STYLE

Weekend Special

\$125

One night's stay & cooked breakfast for two

Available Friday, Saturday and Sunday
Subject to availability

110 - 116 Wakefield Street, Wellington
p 0800 731 444

e reservations@westplaza.co.nz
book now westplaza.co.nz



Christian Supplies

www.christiansupplies.co.nz

- See our monthly newsletter in 'The Angelus'

- Freephone 0508 988 988 - Freefax 0508 988 989

email: order@pleroma.org.nz

GLOBUS

Sistine Chapel, Vatican City

The Angelus

St Mary of the Angels Parish

Church and Presbytery:

17 Boilecott Street,

Wellington Central

Telephone: 473 8074

Parish website: www.smoa.org.nz

St Mary of the Angels is a diverse community which seeks to praise and thank God in a place of calm and beauty and strives to be Christ alive in Central Wellington

18th May 2014, 5th Sunday of Easter - Year A

Changes in Mass Timetable

Because of the unavailability of priests there will be some changes to the Mass timetable this week. The changes are:

Monday 19 May

7.30am	Mass
12.05pm	Liturgy of the Word with Holy Communion
5.15pm	There will be no Mass or Liturgy

Tuesday 20 May

7.30am	Mass
12.05pm	Mass
5.15pm	Liturgy of the Word with Holy Communion

First Sacraments Programme

The first sacraments programme resumes this coming week with a meeting on Wednesday evening for the parents of the children who are preparing for the sacrament of Confirmation. The sacrament will be celebrated by Archbishop John on Saturday 21 June at St Teresa's Church in Karori.

Please keep the children and their parents in your prayers. They have already celebrated their first reconciliation and will receive their First Holy Communion on the Feast of Christ the King in November.

We join our neighbouring Parishes in the Central Pastoral Area (Cathedral and Otari) for this sacramental programme. I am very grateful to Bede Clarke who is the co-ordinator of the Sacramental Programme for St Mary of the Angels Parish.

Fr Barry Scannell sm
Parish Priest

Parish Priest

Fr Barry Scannell SM

smoapp@xtra.co.nz

Assistant Priest

Fr Tom O'Connor SM

Adult Education

Fr Michael Young SM

Pastoral Worker

Sr Frances Gibbs CSB

Director of Music

Robert Oliver

robert.oliver@paradise.net.nz

Parish Accountant

Jeanette Temelo

smoamanager@xtra.co.nz

Parish Office

smoaoffice@xtra.co.nz

MASSES

Sunday 7am, 9am, 11am, 5pm

Monday to Friday 7:30am, 12:05pm,
& 5:15pm

Saturday 11am

EACH MONTH

4th Saturday 11am Mass with
Sacrament of Anointing

ADORATION

Monday to Friday 6:45am-7:30am

Friday 11am-noon

RECONCILIATION

Monday to Thursday 11:30am-noon
12:30pm-1:00pm
4:30pm-5:00pm

Friday 11:00am-noon
12:30pm-1:00pm
4:30pm-5:00pm

Saturday 10:30am-11:00am
4:00pm-5:00pm

INVEST IN YOUR FAITH

CATHOLIC DEVELOPMENT FUND of WELLINGTON

This Week's Readings

First Reading	Acts	6:1-7
<i>They elected seven men filled with the Spirit and wisdom.</i>		
Second Reading	1 Peter	2:4-9
<i>You are a chosen race, a royal priesthood.</i>		
Gospel Reading	John	14:1-12
<i>I am the way, the truth, and the life.</i>		

Next Week's Readings

First Reading	Acts	8:5-8. 14-17
Psalm	65	
Second Reading	1 Peter	3:15-18
Gospel Reading	John	14:15-21

Last Sunday's Collection

Total	\$4,880
Parish Expenses	\$3,465
Support of House	\$1,415



Planned Giving and Tax Receipts

If you would like to join the St Mary of the Angels Planned Giving Scheme please contact the Parish Office. A tax rebate of 33.3% may be claimed on all your contributions.

St Vincent de Paul

The next meeting for the St Vincent de Paul Society is on Tuesday May 20th at 6pm in the Parish Hall. We welcome special guest Steve Flude from the home of Compassion to this meeting. All are welcome to attend.

Mass has been offered for:

Recently Deceased: Mary Egan, Su Yen Bok

Anniversaries: John Smith, Oinah MacPherson, Michael Mahoney, Michael John O'Sullivan, Norma O'Connell, Jane Martin, Fr Gus Hill sm, Marietta Hopman, Nola Griffen, Terry Chamberlain, Joseph Herman

Prayers for the Sick: Jack Body, Richard Wright, Philip Birch, John Foden, Ann Ross, Lisa Alo, Maureen McDonald, Fr Craig Larkin sm, Reny Thomas, Colleen Pocock, Barbara Ross, Helen Havasi, Losalia Leo, Patricia Smyth, Dulcie Campbell, Joanna Veltman, Kathleen Phelan.



Please remember in your prayers, these and the other sick of the Parish. If you know of anyone who is confined to their home or who needs a visit with Holy Communion, please contact Sister Frances at the Parish Office.

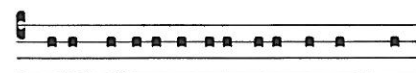
Responsorial Psalm 32

**R. Lord, let your mercy be on us,
as we place our trust in you.**

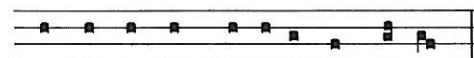
Ring out your joy to the Lord, O you just;
for praise is fitting for loyal hearts.
Give thanks to the Lord upon the harp,
with a ten-stringed lute sing him songs. **R**

For the word of the Lord is faithful
and all his works to be trusted.
The Lord loves justice and right
and fills the earth with his love. **R**

The Lord looks on those who revere him,
on those who hope in his love,
to rescue their souls from death,
to keep them alive in famine. **R**



Fiat misericórdia tua super nos:



quemádmódum sperá-vi-mus- in te.

Let Thy mercy, O Lord, be upon us, as we have hoped in Thee.

St Mary of the Angels Choir

The St Mary of the Angels Choir is seeking new members. The choir sings Gregorian chant and polyphony at the 12pm Mass each Sunday. If you would like to join the choir please contact Robert Oliver: phone 934 2296 or email robert.oliver@paradise.net.nz, or approach a choir member after Mass. There is no audition.

Prayer for Seismic Strengthening Work

Gracious God, Creator of the Universe,
you made us in your own image and likeness.
You gave us wisdom and understanding,
grateful hearts and creative minds.

We pray that our beautiful Church will be
strengthened against the peril of earthquake
through the generosity of parishioners,
the community of Wellington and people
throughout New Zealand.

We ask, Lord, that you abundantly bless those
who have already donated funds,
skill and expertise to this project.
May St Mary of the Angels Church
be a symbol of a unified community that will
gather to praise and thank you.
Mary our Mother, pray for us.

Adult Education in the Faith Ministry

First Level Course: Introduction to Christian Spirituality

22nd May, 7.30pm - 9.30pm at Pa Maria, 78 Hobson St.

Theme: Spirituality and the Human Person

Session 5: Human Truth, Imagination and Conscience (3)

**Second Level Course (Restricted): The Incomparable
God - The Testimony of Israel**

21st May, 5.30pm - 7.30pm in the Presbytery Boardroom.

Theme: Israel's Core Testimony.

Session 14: D. Nouns: God as Constant (4); D.4. Metaphors of Sustenance or Metaphors of Solidarity continued; D.4. Overview of Noun Testimony; D.5. Summary of Israel's Noun Testimony.

Challenge 2000 Require Home for Boarder

Challenge 2000 are looking for a home for a 17 year old boy boarder. Blake has been bought up by his Grandparents but they are moving to another township. He is a student at Wellington Polytechnic studying Hospitality. Blake is independent, will use public transport and receives a youth benefit.

If you are able to have him board with you, or know anyone who can please contact Marcia Clarke on 478 4229.

SMAYACs Prayer Group

All young adults and the young at heart are invited to a time of prayer, readings and reflection every Thursday at 6pm in the Parish Hall.

Theology on Tap

All are welcome to join the St Mary of the Angels Young Adults for Theology on Tap, next Sunday 25th May at 6.30pm at Hotel Bristol, Cuba St. This month's guest speaker is Fritz Mascarenhas who will speak on the theme: "Come unto Me all ye that labour and are heavy laden and I will give you rest " Mathew 11:28.

Fritz previously worked as a Navigating Officer in the Merchant Marine when he had an experience of Jesus that radically changed his life. He resigned his job and devoted his life entirely to sharing the Good News of Jesus Christ. Presently Fritz is the Director of the Institute for World Evangelisation, ICPE Mission in Bangalore, India.

SMAYACs Roast Dinner at The Realm

St Mary of the Angels Young Adults are going to The Realm Restaurant, 7 Moxham Ave, for their \$15 Sunday Roast after the 5pm Mass tonight. The more the merrier!

Sacrament of Confirmation

The first Parent Information Evening for Confirmation Preparation is on Wednesday 21st May 7.30pm at St Thomas More Church in Wilton. You will receive your child's/children's workbooks and important information about the programme. Please make sure a parent or caregiver attends this meeting.

Cathedral Car Park

The car park under the Diocesan Centre at Sacred Heart Cathedral, is now available for Parishioners attending the 9am Mass. The entrance to the car park is off Hill Street.

Minsters of the Word & Eucharistic Ministers

We require more Eucharistic Ministers and Readers for the 12pm Mass on Sunday. If you would like to be considered for this ministry please contact the Parish Office or approach Sr Frances after Mass.

TO KEEP UP TO DATE WITH EVENTS AROUND THE ARCHDIOCESE VISIT WWW.WN.CATHOLIC.ORG.NZ

LT
McGuinness
BUILDING CONTRACTORS
9 Francis Place,
PO Box 9639, Wellington
Phone (04) 384 8455 Fax (04) 801 8455
Email: ltm@mcguinness.co.nz

Little Peckish
Café
Feeling a little peckish?
Dukes Arcade · Great food, coffee, service
Office catering available
Phone 499 7769 · Mobile 0274 461 650

NEW WORLD
WELLINGTON CITY
279 WAKEFIELD ST.
OPEN 7 DAYS | 7AM - MIDNIGHT
WWW.WGTNCITYNEWWORLD.CO.NZ

CDF
Catholic Development Fund of Wellington

Save with the CDF and you'll be helping the needy;
each year all of CDF's operating surplus goes to the
Archdiocese for social caring and pastoral services.

Saving with us helps your Archdiocese.
Call 0800 4 233 233 or visit www.cdf.co.nz

