

## For Your Diaries : 2014

### 12-15 May, 50th Anniversary of Wellington Anglican Cathedral

Wellington Cathedral of St Paul is celebrating its 50th Anniversary in the spirit of Bob Dylan's "Blowin' in the Wind". From Monday 12th May - Thursday 15th May there will be four lunchtime seminars from 12.45pm - 1.45pm in the Loaves and Fishes Hall at the Cathedral of St Paul, corner of Molesworth and Hill Sts. Guest speakers include Prof. Peter Lineham (The changing culture & religious landscape), Bishop Richard Randerson (Ideology and Values in Economic Change), Stephanie McIntyre & Rev. Tric Malcolm (Ministry and Mission) & Claire Szabo (Habitat for Humanity).

### 15 May, Joshua Catholic Men's Fellowship Meeting

All men are invited to come and join us at our "Praise and Worship" meeting Thursday 15 May, 7.30pm, Connolly Hall, Guildford Terrace, Thorndon. For more information phone David 387 9714

### 16-18 May, Marriage Encounter Weekend Retreat

Marriage Encounter is holding its weekend marriage enrichment experience on 16 -18 May at the Magnificat Retreat Centre near Featherston. All couples deserve this special weekend which provides an atmosphere for couples to concentrate on each other in privacy, free of the usual distractions and pressures of modern life. To book on the weekend or obtain further information please phone Olivia & Brett on 0800 362 686.

### 17 May, Dove Fellowship for Women Retreat

Dove Fellowship for Women invites you to a retreat day on Saturday, 17 May 10am-3.30pm (1pm for half day session) at Connolly Hall, Thorndon. Spiritual Director, Mary Ebyarimpa, from Auckland will run the day themed "You Are The Beloved". Bring own lunch/bible/notepaper. Doors open 9.30am. Enquiries: Sandra 475 5541 [www.dove.org.nz](http://www.dove.org.nz)

### 18 May, Catholic Deaf Community Mass

The Catholic Deaf Community Mass invites all Deaf to join them for the 9.30am Mass at St Peter and Paul's Church, 60 Knights Road, Lower Hutt, on Sunday 18 May. A NZSL interpreter will be present.

### 21 May, St Mary's College Open Day

St Mary's College invites all prospective students to the College Open Day on Wednesday 21st May from 8am - 10am. For further information, contact Principals Assistant 473 5554 ext 844 [www.st-marys-wellington.school.nz](http://www.st-marys-wellington.school.nz)

**Traditional Latin Mass** is celebrated each Sunday at 12.30pm at Pa Maria, 78 Hobson Street, Thorndon. Enquiries: Neil Coup 021896924.

## Quality Te Aro Offices

5-7 Vivian Street, Wellington

Great location close to Cafe district  
Busy arterial road  
Air conditioned  
Car parking available

Office suites available at an affordable price. Semi-serviced suites (approx 18sqm) that are fully furnished. There is also a company floor area (approx 200sqm) with 5x partitioned offices, Board room and Meeting room. Shared kitchen and shower facilities. Car parking available in the building at an additional rate.

This is a must see for new businesses on a budget. Earthquake Engineering Evaluation IEP Report NBS 80 %

Contact by e-mail for further information: [mariabaldock@gmail.com](mailto:mariabaldock@gmail.com)

This newsletter is kindly sponsored by:  
Michael Burrowes  
of Burrowes and Company  
Barristers and Solicitors  
phone (04) 473 7733

**BURROWES**  
and Company

Barristers and Solicitors

## GLOBUS RELIGIOUS TRAVEL

Faith-based travel is the perfect way to build community. Explore the stories, follow in the footsteps of spiritual leaders and discover the roots of our faith.

For more information call **0800 Globus** or speak with *St Mary of the Angels* parishioner **Tracey Driscoll**, Area Sales Manager, Globus family of brands.

**GLOBUS**

Sistine Chapel, Vatican City

## Please Support our Sponsors



Is dealing with a  
**Locally Owned  
Funeral Director**  
important to you?



Wellington  
56 Onepu Road, Kilbirnie  
Telephone **387-8301**  
Email: [harbour@funeral-link.co.nz](mailto:harbour@funeral-link.co.nz)  
[www.harbourcityfunerals.co.nz](http://www.harbourcityfunerals.co.nz)

## WEST PLAZA HOTEL

LOCATION • COMFORT • STYLE

**Weekend Special**  
**\$125**

One night's stay & cooked breakfast for two

Available Friday, Saturday and Sunday  
Subject to availability

110 - 116 Wakefield Street, Wellington  
p 0800 731 444

e [reservations@westplaza.co.nz](mailto:reservations@westplaza.co.nz)  
book now [westplaza.co.nz](http://westplaza.co.nz)



**Christian Supplies**

[www.christiansupplies.co.nz](http://www.christiansupplies.co.nz)

- See our monthly newsletter in 'The Angelus'  
- Freephone 0508 988 988 - Freefax 0508 988 989  
email: [order@pleroma.org.nz](mailto:order@pleroma.org.nz)

# The Angelus

St Mary of the Angels Parish

### Church and Presbytery:

**17 Boulcott Street,  
Wellington Central**

**Telephone: 473 8074**

**Parish website: [www.smoa.org.nz](http://www.smoa.org.nz)**

*St Mary of the Angels is a diverse community which seeks to praise and thank God in a place of calm and beauty and strives to be Christ alive in Central Wellington*

### Parish Priest

Fr Barry Scannell SM  
[smoapp@xtra.co.nz](mailto:smoapp@xtra.co.nz)

### Assistant Priest

Fr Tom O'Connor SM

### Adult Education

Fr Michael Young SM

### Pastoral Worker

Sr Frances Gibbs CSB

### Director of Music

Robert Oliver  
[robert.oliver@paradise.net.nz](mailto:robert.oliver@paradise.net.nz)

### Parish Accountant

Jeanette Temelo  
[smoamanager@xtra.co.nz](mailto:smoamanager@xtra.co.nz)

### Parish Office

[smoaoffice@xtra.co.nz](mailto:smoaoffice@xtra.co.nz)

### MASSES

Sunday 7am, 9am, 11am, 5pm

Monday to Friday 7:30am, 12:05pm, & 5:15pm

Saturday 11am

### EACH MONTH

4th Saturday 11am Mass with Sacrament of Anointing

### ADORATION

Monday to Friday 6:45am-7:30am

Friday 11am-noon

### RECONCILIATION

Monday to Thursday 11:30am-noon  
12:30pm-1:00pm  
4:30pm-5:00pm

Friday 11:00am-noon  
12:30pm-1:00pm  
4:30pm-5:00pm

Saturday 10:30am-11:00am  
4:00pm-5:00pm

## 11th May 2014, 4th Sunday of Easter - Year A

### Good Shepherd Sunday and Mother's Day

Happy Mother's Day to all our mothers and grandmothers. Today is also Good Shepherd Sunday. In today's gospel Jesus tells us that the sheep 'hear his voice'; he 'leads them'; he keeps them 'safe'. These qualities of the good shepherd are also the qualities of our mothers. Theirs is the first voice we hear as children; they lead and guide us; they offer protection and nurture, and, together with our fathers and community, introduce us to Christ the Good Shepherd.

We are all shepherds and we are all sheep. We are called to provide safety and meaningful leadership for the children and vulnerable of our parish, families, and community.

We are all called to lead - to find ways of bringing nurturing qualities of safety, inclusion and welcome to our various ministries in Christ.

We are called to follow - to find ways to tend to our souls, to be still in prayer, to allow Christ to love us and to shepherd us through the nurture of others.

### Assembly of the Federation of Catholic Bishops Conferences of Oceania

The Assembly of the Federation of Catholic Bishops Conference of Oceania (FCBCO) will take place in Wellington this week. It is a unique time of prayer, fellowship, reflection and discussion on topics which are of concern throughout this region. The Assembly takes place every four years in a different part of Oceania. There will be 86 bishops in Wellington for the event, from Papua New Guinea, Solomon Islands, the countries of the Pacific and from Australia and New Zealand. It is a valuable opportunity for collegial support for one another.

It is 20 years since this Assembly was held in New Zealand when the inaugural Assembly was held in 1994 in Auckland, but it is a first for the Archdiocese of Wellington. This also marks the end of Archbishop John's terms as President of the FCBCO.

Please keep this Assembly in your prayer over the coming week.

Fr Barry Scannell sm  
Parish Priest

# INVEST IN YOUR FAITH

CATHOLIC DEVELOPMENT FUND of WELLINGTON



## This Week's Readings

<b>First Reading</b>	<b>Acts</b>	<b>2:14. 36-41</b>
<i>God has made Jesus both Lord and Christ.</i>		
<b>Second Reading</b>	<b>1 Peter</b>	<b>2:20-25</b>
<i>You had gone astray but now you have come back to the shepherd and guardian of your souls.</i>		
<b>Gospel Reading</b>	<b>John</b>	<b>10:1-10</b>
<i>I am the gate of the sheepfold.</i>		

## Next Week's Readings

<b>First Reading</b>	<b>Acts</b>	<b>6:1-7</b>
<b>Psalm</b>	<b>32</b>	
<b>Second Reading</b>	<b>1 Peter</b>	<b>2:4-9</b>
<b>Gospel Reading</b>	<b>John</b>	<b>14:1-12</b>

## Last Sunday's Collection

Total	\$4,365
Parish Expenses	\$3,099
Support of House	\$1,266



## Planned Giving and Tax Receipts

Tax receipts for the 2013/14 financial year have been posted to those on Planned Giving and who contribute through Direct Debit. If you have not received your receipt please contact the Parish Office: email [smaoffice@extra.co.nz](mailto:smaoffice@extra.co.nz) or phone (04) 473 8074

If you would like to join the St Mary of the Angels Planned Giving Scheme please contact the Parish Office. A tax rebate of 33.3% may be claimed on all your contributions.

## Mass has been offered for:

**Recently Deceased:** Patsy Spillane, Chia Yuet Lin

**Anniversaries:** Michael Mahoney, Jane Martin, Michael John O'Sullivan, Norma O'Connell, Fr Gus Hill sm, Marietta Hopman, Nola Griffen, Terry Chamberlain, Joseph Herman

**Prayers for the Sick:** Jack Body, Richard Wright, Philip Birch, John Foden, Ann Ross, Lisa Alo, Mary Egan, Maureen McDonald, Fr Craig Larkin sm, Reny Thomas, Colleen Pocock, Barbara Ross, Helen Havasi, Patricia Smyth, Dulcie Campbell, Joanna Veltman, Losalia Leo, Kathleen Phelan.



*Please remember in your prayers, these and the other sick of the Parish. If you know of anyone who is confined to their home or who needs a visit with Holy Communion, please contact Sister Frances at the Parish Office.*

## Responsorial Psalm 22

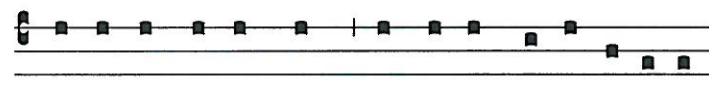
**R. The Lord is my shepherd;  
there is nothing I shall want.**

The Lord is my shepherd;  
there is nothing I shall want.  
Fresh and green are the pastures  
where he gives my repose.  
Near restful waters he leads me,  
to revive my drooping spirit. **R**

He guides me along the right path;  
he is true to his name.  
If I should walk in the valley of darkness  
no evil would I fear.  
You are there with your crook and your staff;  
with these you give me comfort. **R**

You have prepared a banquet for me  
in the sight of my foes.  
My head you have anointed with oil;  
my cup is overflowing. **R**

Surely goodness and kindness shall follow me  
all the days of my life.  
In the Lord's own house shall I dwell  
for ever and ever. **R**



Domi-nus re-git me, et ni-hil mi-hi de-e-rit.

*The Lord ruleth me, and I shall want nothing.*

**Reflection:** *Miranda Williamson is a Parishioner of St Mary of the Angels and works as a Researcher for a Heritage Consultant. She recently spent ten weeks in the Solomon Islands working as a volunteer for Mahitahi, a Catholic overseas volunteer organisation.*

"As a Researcher for a Heritage Consultant I am usually found researching in the archives, but in late January I flew to the Solomon Islands to undertake a ten week placement for Mahitahi, working in the capital city, Honiara. My assignment was to assist the Archbishop Adrian Smith sm and Father Cor Hoomayers sm with organising the archive at Holy Cross Cathedral and the financial records.

During my stay I became part of the community of the Missionary Sisters of the Society of Mary. The group consisted of one Fijian, one Tongan, one Kiribati and two Solomon Islanders. They showed me many kindnesses including how to scrape coconuts, explained Pijin phrases, took me to the market, cooked amazing meals from limited ingredients, explained the Solomon Island culture, and we shared a lot of stories and a lot of laughs.

The days were long. House prayers began at 5.35am after which we piled in the van and were at Mass at the Cathedral at 6.15am. The Cathedral was open-sided and it was stunning to see the sun rise during Mass. I enjoyed the work in the archive and found ways to contribute to the organisation of the material. Like most of the Solomon Islanders I met, my counterparts were hardworking, patient, resilient and committed to their families.

Honiara was more like a town than a city and the rubbish that clogged the streets was a constant source of despair for locals and foreigners alike. However, I enjoyed the bustle and friendliness of the people; there were always people wanting to talk about their relatives in New Zealand, the price of cell phones or whatever gossip was splashed across the eccentric and somewhat unreliable local paper.

In the my final week of my stay, terrible flooding hit Guadalcanal. The Matanikau river rose higher than anyone could remember and soon we saw trees, pigs and people being swept along in the swift current. Soon people were searching the river mouth looking for missing family members. The water and power were cut, and it kept raining. The parish hall became one of the evacuee centres and sheltered hundreds of people and I helped with the distribution of food, water and other necessities. It was inspiring to see everyone pull together to make the best of a terrible situation.

I feel very blessed to have had this opportunity to work and live in the Solomon Islands and gained much from the experience. I would encourage everyone to consider volunteering for Mahitahi." ([www.mahitahi.org](http://www.mahitahi.org))

*Miranda Williamson, Parishioner*

## Prayer for Seismic Strengthening Work

Gracious God, Creator of the Universe,  
you made us in your own image and likeness.  
You gave us wisdom and understanding,  
grateful hearts and creative minds.  
We pray that our beautiful Church will be  
strengthened against the peril of earthquake  
through the generosity of parishioners,  
the community of Wellington and people  
throughout New Zealand.

We ask, Lord, that you abundantly bless those who  
have already donated funds,  
skill and expertise to this project.  
May St Mary of the Angels Church  
be a symbol of a unified community that will  
gather to praise and thank you.  
Mary our Mother, pray for us.

## SMAYACs Prayer Group

All young adults and the young at heart are invited to a time of prayer, readings and reflection every Thursday at 6pm in the Parish Hall.

## Adult Education in the Faith Ministry

**First Level Course: *Introduction to Christian Spirituality***  
15th May, 7.30pm - 9.30pm at Pa Maria, 78 Hobson St.

**Theme:** Spirituality and the Human Person  
**Session 4:** Human Truth, Imagination and Conscience (2)

**Second Level Course (Restricted): *The Incomparable God - The Testimony of Israel***

14th May, 5.30pm - 7.30pm in the Parish Hall.

**Theme:** Israel's Core Testimony.  
**Session 13:** D. Nouns: God as Constant(3); D.2. Metaphors of Governance or Metaphors of Sovereignty continued; D.3. Metaphors of Sustenance or Metaphors of Solidarity

**LT McGuinness**  
BUILDING CONTRACTORS LIMITED  
9 Francis Place,  
PO Box 9639, Wellington  
Phone (04) 384 8455 Fax (04) 801 8455  
Email: [ltm@mcguinness.co.nz](mailto:ltm@mcguinness.co.nz)

**Little Peckish**  
Cafe  
Feeling a little peckish?  
Dukes Arcade • Great food, coffee, service  
Office catering available  
Phone 499 7769 • Mobile 0274 461 650

**NEW WORLD**  
Wellington City  
Wellington's only  
inner city supermarket  
Open 7 days 7am - midnight  
279 Wakefield Street. Ph 04 384 8054  
[www.newworld.co.nz/wellington-city](http://www.newworld.co.nz/wellington-city)



Save with the CDF and you'll be helping the needy;  
each year all of CDF's operating surplus goes to the  
Archdiocese for social caring and pastoral services.

Saving with us helps your Archdiocese.  
Call 0800 4 233 233 or visit [www.cdf.co.nz](http://www.cdf.co.nz)

