

## For Your Diaries : 2014

### 6 April, Young Church Mass

All are invited to the Young Church Mass tonight at 7pm at Sacred Heart Cathedral. This is a chance to celebrate the Catholic faith with other young Catholics from the Archdiocese. It will be followed by supper afterwards.

### 11 April, Pope Francis and the Catholic Social Justice Tradition

All are invited to hear Fr Gerard Burns provide an exploration of what Pope Francis is bringing to modern Catholic social teaching and practice at 5.30pm, Friday 11th April in Connolly Hall. Fr Burns' presentation will include a reflection on the Pope's own experience in the Argentinian and Latin American context including the debate around liberation theology. It will also cover Pope Francis's 2013 letter Evangelii Gaudium and its critique of speculative financial capitalism.

### 12 April, Dove Catholic Fellowship for women

Dove Catholic Fellowship for women invites all women to a full day meeting with outstanding international teacher/prayer minister Sandra Sellmer Kerston on Saturday 12th April 10am-3.30pm at Connolly Hall, off Hill St. Doors open at 9.30am for a cuppa, and prompt start at 10am. Tea and coffee will be supplied but please bring your own lunch. Enquiries Sandra 475 5541 or Margaret 973 0512 or visit [www.dove.org.nz](http://www.dove.org.nz)

### 13 April, Catholic Deaf Community Mass

The Catholic Deaf Community invites all deaf to join them for the 9.30am Mass at St Peter and Paul's Church, 60 Knights Road, Lower Hutt, on Sunday 13 April. A NZSL interpreter will be present.

### 15 April, St John's Fellowship Group Lenten Service

St John's Presbyterian Church Fellowship Group extends a warm invitation to all parishioners to attend their annual Lenten Service on Tuesday 15th April at 11am at St John's Presbyterian Church. This is a short service conducted by Rev Allister Lane followed by a shared finger lunch in St Johns Hall. The Fellowship Group is a mixed group of mostly retirees. If you are interested in attending please contact Mary Gibbs ph: 383 8446.

### 30 April, Evangelization with Martha Fernandez-Sardina

You are invited to an evening with Martha Fernandez-Sardina on evangelization. Martha will show us how to proclaim the Joy of the Gospel with a smile on our face. Wednesday 30th April 7.30-9.30pm at Connolly Hall, Guildford Tce.

**Traditional Latin Mass** is celebrated each Sunday at 12.30pm at Pa Maria, 78 Hobson Street, Thorndon. Enquiries: Neil Coup 021896924.

### Quality Te Aro Offices

5-7 Vivian Street, Wellington

Great location close to Cafe district  
Busy arterial road  
Air conditioned  
Car parking available

Office suites available at an affordable price. Semi-serviced suites (approx 18sqm) that are fully furnished. There is also a company floor area (approx 200sqm) with 5x partitioned offices, Board room and Meeting room. Shared kitchen and shower facilities. Car parking available in the building at an additional rate.

This is a must see for new businesses on a budget. Earthquake Engineering Evaluation IEP Report NBS 80 %

Contact by e-mail for further information: [mariabaldock@gmail.com](mailto:mariabaldock@gmail.com)

This newsletter is kindly sponsored by:  
Michael Burrowes  
of Burrowes and Company  
Barristers and Solicitors  
phone (04) 473 7733

**BURROWES**  
and Company

Barristers and Solicitors

### GLOBUS RELIGIOUS TRAVEL

Faith-based travel is the perfect way to build community. Explore the stories, follow in the footsteps of spiritual leaders and discover the roots of our faith.

For more information call **0800 Globus** or speak with *St Mary of the Angels* parishioner **Tracey Driscoll**, Area Sales Manager, Globus family of brands.

**GLOBUS**

Sistine Chapel, Vatican City

## Please Support our Sponsors



Locally Owned Funeral Directors  
Caring in our Community

Is dealing with a  
**Locally Owned  
Funeral Director**  
important to you?

**Harbour City**  
FUNERAL HOME

Wellington  
56 Onepu Road, Kilbirnie  
Telephone 387-8301  
Email: [harbour@funeral-link.co.nz](mailto:harbour@funeral-link.co.nz)  
[www.harbourcityfunerals.co.nz](http://www.harbourcityfunerals.co.nz)

### WEST PLAZA HOTEL

LOCATION • COMFORT • STYLE

Weekend Special

**\$125**

One night's stay & cooked breakfast for two

Available Friday, Saturday and Sunday  
Subject to availability

110 - 116 Wakefield Street, Wellington  
p 0800 731 444

e [reservations@westplaza.co.nz](mailto:reservations@westplaza.co.nz)  
book now [westplaza.co.nz](http://westplaza.co.nz)



**Christian Supplies**

[www.christiansupplies.co.nz](http://www.christiansupplies.co.nz)

- See our monthly newsletter in 'The Angelus'

- Freephone 0508 988 988 - Freefax 0508 988 989

email: [order@pleroma.org.nz](mailto:order@pleroma.org.nz)

# The Angelus

St Mary of the Angels Parish

**Church and Presbytery:**

**17 Boulcott Street,**

**Wellington Central**

**Telephone: 473 8074**

**Parish website: [www.smoa.org.nz](http://www.smoa.org.nz)**

*St Mary of the Angels is a diverse community which seeks to praise and thank God in a place of calm and beauty and strives to be Christ alive in Central Wellington*

**Parish Priest**

Fr Barry Scannell SM

[smoapp@extra.co.nz](mailto:smoapp@extra.co.nz)

**Assistant Priest**

Fr Tom O'Connor SM

**Adult Education**

Fr Michael Young SM

**Pastoral Worker**

Sr Frances Gibbs CSB

**Director of Music**

Robert Oliver

[robert.oliver@paradise.net.nz](mailto:robert.oliver@paradise.net.nz)

**Parish Accountant**

Jeanette Temelo

[smoamanager@extra.co.nz](mailto:smoamanager@extra.co.nz)

**Parish Office**

[smoaoffice@extra.co.nz](mailto:smoaoffice@extra.co.nz)

### MASSES

Sunday 7am, 9am, 11am, 5pm

Monday to Friday 7:30am, 12:05pm,  
& 5:15pm

Saturday 11am

### EACH MONTH

4th Saturday 11am Mass with  
Sacrament of Anointing

### ADORATION

Monday to Friday 6:45am-7:30am

Friday 11am-noon

### RECONCILIATION

Monday to Thursday 11:30am-noon  
12:30pm-1:00pm  
4:30pm-5:00pm

Friday 11:00am-noon  
12:30pm-1:00pm  
4:30pm-5:00pm

Saturday 10:30am-11:00am  
4:00pm-5:00pm

## 6th April 2014, 5th Sunday of Lent - Year A

### Palm Sunday Masses

The Palm Sunday Mass timetable is as follows. Please note that our usual Sunday 9am Mass is now a combined Mass with the Cathedral Parish at 10am.

7am St Mary of the Angels Parish Hall  
10am Sacred Heart Cathedral  
12pm St John's Presbyterian Church  
5pm St Joseph's Church, Mt Victoria

### Easter Timetables

Easter timetables are available at each Mass today. Please take one home so you are fully informed of Mass times and venues over the Easter period.

### Minsters of the Word and Eucharistic Ministers

We require more Readers and Eucharistic Ministers for the 12pm Mass on Sunday. If you would like to be considered for this ministry please contact the Parish Office or approach Sr Frances after Mass.

### Planned Giving and Tax Receipts

As we begin the new 2014-2015 financial year it is a good time to review your financial commitment to the Parish. Please contact the Parish Office if you would like to join the St Mary of the Angels Planned Giving Scheme. A tax rebate of 33.3% may be claimed on all your contributions.

Tax receipts will be issued in April for the 2013/2014 financial year.

### St John's Fellowship Group Lenten Service

St John's Presbyterian Church Fellowship Group extends a warm invitation to all parishioners to attend their annual Lenten Service on Tuesday 15th April at 11am at St John's Presbyterian Church. If you are interested in attending please contact Mary Gibbs ph: 383 8446.

*Fr Barry Scannell sm, Parish Priest*

# INVEST IN YOUR FAITH

CATHOLIC DEVELOPMENT FUND of WELLINGTON



## This Week's Readings

**First Reading** Ezek 37:12-14  
*I shall put my spirit in you, and you will live.*

**Second Reading** Rom 8:8-11  
*If the Spirit of him who raised Jesus from the dead is living in you, then he will give life to your own mortal bodies.*

**Gospel Reading** John 11:1-45  
*I am the resurrection and the life.*

## Next Week's Readings

**First Reading** Is 50:4-7  
**Psalm** 21  
**Second Reading** Phil 2:6-11  
**Gospel Reading** Matthew 26:14-27:66

## Last Sunday's Collection

Total	\$4,011
Parish Expenses	\$2,848
Support of House	\$1,163



## Adult Education in the Faith Ministry

### First Level Course:

#### Introduction to Christian Spirituality

10th April, 7.30pm - 9.30pm at Pa Maria, 78 Hobson St.

**Theme:** Spirituality and the Human Person

**Session 2:** Religious Experience, Feeling, Love, Passion.

### Second Level Course (Restricted):

#### The Incomparable God

9th April, 5.30pm - 7.30pm in the Parish Hall.

**Theme:** Israel's Core Testimony.

**Session 10:** Adjectives: God with characteristic markings (Part 2); Typical uses of Adjectival Formula.

## Mass has been offered for:

**Recently Deceased:** Gerard Barker, Deidre Sweeney, Su-Yen Bok, Fr Frank Garty

**Anniversaries:** Jack Ryan, Leo Connolly

**Prayers for the Sick:** Richard Wright, Chia Yuet Lin, Tham Ynet Lin, Philip Birch, John Foden, Ann Ross, Lisa Alo, Mary Egan, Maureen McDonald, Fr Craig Larkin sm, Reny Thomas, Colleen Pocock, Barbara Ross, Helen Havasi, Patricia Smyth, Dulcie Campbell, Joanna Veltman, Losalia Leo, Kathleen Phelan.



*Please remember in your prayers, these and the other sick of the Parish. If you know of anyone who is confined to their home or who needs a visit with Holy Communion, please contact Sister Frances at the Parish Office.*

## Responsorial Psalm 129

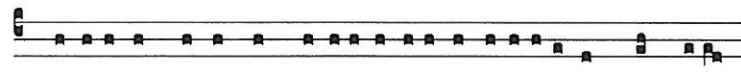
**R. With the Lord there is mercy and fullness of redemption.**

Out of the depths I cry to you, O Lord,  
 Lord, hear my voice!  
 O let your ears be attentive  
 to the voice of my pleading. **R**

If you, O Lord, should mark our guilt,  
 Lord, who would survive?  
 But with you is found forgiveness:  
 for this we revere you. **R**

My soul is waiting for the Lord  
 I count on his word.  
 My soul is longing for the Lord  
 more than watchman for daybreak.  
 (Let the watchman count on daybreak  
 and Israel on the Lord). **R**

Because with the Lord there is mercy  
 and fullness of redemption,  
 Israel indeed he will redeem  
 from all its iniquity. **R**



Quia apud Dóminum misericórdia: et copió-sa re-démp-ti-o.

*Because with the Lord there is mercy, and plentiful redemption.*

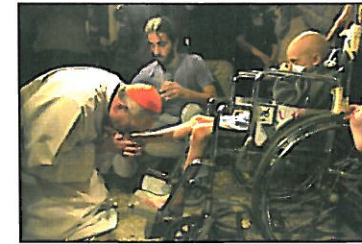
## Lenten Reflection Group

All are invited to join the Lenten Reflection group who meet on Mondays during Lent from 6 -7pm in the Boardroom of the Presbytery. Please email Monica O'Connell for more details: [toobeautifulforyou@gmail.com](mailto:toobeautifulforyou@gmail.com)

## Reflection: Lent - A time to adjust your life

*An extract from Pope Francis' homily at Casa Santa Marta, March 2014.*

**"He became poor,  
 so that by his poverty  
 you might become rich"**  
 (2 Cor 8:9)



Pope Francis began his homily stressing "conversion" as the key word of Lent, a favourable time "to grow closer" to Jesus.

This is the invitation. But, Pope Francis asked, "what is the sign that we are going along on a good path?". He said that we must "...Redress the wronged, hear the orphan's plea, defend the widow, take care of the neighbour, the sick, the poor, the needy, the ignorant. This is the yardstick... ..When one walks a little bit and comes closer to the Lord, the light of the Lord makes him see these things and he goes to help the brothers. This is the sign, this is the sign of conversion. ...Lent is to adjust life, to fix life, to change life, to draw closer to the Lord. The sign that we are far from the Lord is hypocrisy. The hypocrite does not need the Lord, he is saved by himself — so he thinks — and he disguises himself as a saint. The sign that we are drawing closer to the Lord with repentance, asking for forgiveness, is that we care for the needy brethren. May the Lord give us all light and courage: light to know what's happening within us, and courage to convert, to draw closer to the Lord. It is beautiful to be close to the Lord."

## 2014 Home of Compassion Annual Street Appeal

The 2014 Home of Compassion Annual Street Day is on Friday 4th July. The Sisters require volunteers to help as collectors and area co-ordinators. Collection times are from 7am – 3pm. If you can help please phone Suzanne Aubert Compassion Centre on 385 9299 or Home of Compassion Island Bay on 383 4952 with your name email telephone and preferred collection area.

## St Mary of the Angels Choir

The St Mary of the Angels Choir is seeking new members. The choir sings Gregorian chant and polyphony at the 12pm Mass each Sunday. If you would like to join the choir please contact Robert Oliver: [robert.oliver@paradise.net.nz](mailto:robert.oliver@paradise.net.nz) or approach a choir member after Mass. There is no audition.

TO KEEP UP TO DATE WITH EVENTS AROUND THE  
 ARCHDIOCESE VISIT [WWW.WN.CATHOLIC.ORG.NZ](http://WWW.WN.CATHOLIC.ORG.NZ)

## Prayer for Seismic Strengthening Work

Gracious God, Creator of the Universe,  
 you made us in your own image and likeness.

You gave us wisdom and understanding,  
 grateful hearts and creative minds.

We pray that our beautiful Church will be  
 strengthened against the peril of earthquake  
 through the generosity of parishioners,  
 the community of Wellington  
 and people throughout New Zealand.

We ask, Lord, that you abundantly bless  
 those who have already donated funds,  
 skill and expertise to this project.

May St Mary of the Angels Church  
 be a symbol of a unified community  
 that will gather to praise and thank you.

Mary our Mother, pray for us.

## SMAYACs Prayer Group

All young adults and the young at heart are invited  
 to a time of prayer, readings and reflection every  
 Thursday at 6.00pm in the Parish Hall.

## Young Church Mass

All are invited to the Young Church Mass tonight  
 at 7pm at Sacred Heart Cathedral. The Young  
 Church Ministries Monthly Masses are a new  
 Archdiocese initiative to provide a time for all  
 youth, young adults and young at heart to come  
 and celebrate Mass together on the first Sunday of  
 each month. All are most welcome to join.



**LT**  
**McGuinness**  
 BUILDING CONTRACTORS  
 9 Francis Place,  
 PO Box 9639, Wellington  
 Phone (04) 384 8455 Fax (04) 801 8455  
 Email: [ltm@mcguinness.co.nz](mailto:ltm@mcguinness.co.nz)

*Little Peckish*  
  
*Feeling a little peckish?*  
 Dukes Arcade · Great food, coffee, service  
 Office catering available  
 Phone 499 7769 · Mobile 0274 461 650

**NEW WORLD**  
**WELLINGTON CITY**  
 279 WAKEFIELD ST.  
 OPEN 7 DAYS | 7AM - MIDNIGHT  
[WWW.WGTNCITYNEWWORLD.CO.NZ](http://WWW.WGTNCITYNEWWORLD.CO.NZ)

Catholic Development Fund of Wellington

**Save with the CDF and you'll be helping the needy;  
 each year all of CDF's operating surplus goes to the  
 Archdiocese for social caring and pastoral services.**

**Saving with us helps your Archdiocese.  
 Call 0800 4 233 233 or visit [www.cdf.co.nz](http://www.cdf.co.nz)**

