

For Your Diaries : 2014

23 March, SMAYACs Potluck dinner

All university students and young adults are invited to a pot luck dinner on Sunday 23rd March following the 5pm Mass at St Joseph's Church, Mt Victoria. Invite your friends and bring a plate of food to share. Contact James Boyle for more information: smayacs@gmail.com or 027 778 9774.

28-30 March, Engaged Encounter

Engaged Encounter is a weekend experience for couples intending to be married. Weekends in 2014 are 28-30 March, 11-13 July, 21-23 November. Weekends are held at the Home of Compassion, Island Bay. For more details go to the website at www.ceewellington.org.nz or phone Kate & Simon Olsen Telephone (04) 801 6192.

28 March, Healing Service with Fr John Rea

There will be a Healing Service with Fr John Rea on Friday, 28 March, beginning at 7.30pm in Sacred Heart Cathedral. All are welcome. Come and experience the healing touch of Jesus.

29 March, Stewardship Reflection Day with Archbishop John Dew

Archbishop John Dew invites you to a Stewardship Reflection Day on Saturday 29 March from 9.30am - 4pm at St Joseph's Church, Mt Victoria. RSVP by 25 March to Ann Williams at a.williams@wn.catholic.org.nz or by calling 04 496 1777.

5 April, Bach Choir - Music for Easter

The Bach Choir presents a concert featuring Faure's Requiem and shorter works by Orlando Gibbons, Henry Purcell, Antonio Lotti, Sir Edward Elgar and John Sanders. 5pm Saturday 5 April at St Peter's on Willis. Tickets \$20 from www.eventfinder.co.nz, Marsden Books or at the door.

13th - 15th June, St Anthony's School Huntly, 100 Year Reunion

St Anthony's Catholic School, Huntly will celebrate it's 100 Year Anniversary on 13th - 15th June 2014. All past students and teaching staff are invited to attend this reunion. For more information visit the website www.stanthonys.school.nz, email stanthonys100years@hotmail.com, or contact St Anthony's Catholic School 07 8288516.

Traditional Latin Mass is celebrated each Sunday at 12.30pm at Pa Maria, 78 Hobson Street, Thorndon. Enquiries: Neil Coup 021896924.

Quality Te Aro Offices 5-7 Vivian Street, Wellington

Great location close to Cafe district
Busy arterial road
Air conditioned
Car parking available

Office suites available at an affordable price. Semi-serviced suites (approx 18sqm) that are fully furnished. There is also a company floor area (approx 200sqm) with 5x partitioned offices, Board room and Meeting room. Shared kitchen and shower facilities. Car parking available in the building at an additional rate.

This is a must see for new businesses on a budget. Earthquake Engineering Evaluation IEP Report NBS 80 %

Contact by e-mail for further information: mariabaldock@gmail.com

This newsletter is kindly sponsored by:
Michael Burrowes
of Burrowes and Company
Barristers and Solicitors
phone (04) 473 7733

BURROWES
and Company
Barristers and Solicitors

GLOBUS RELIGIOUS TRAVEL

Faith-based travel is the perfect way to build community. Explore the stories, follow in the footsteps of spiritual leaders and discover the roots of our faith.

For more information call **0800 Globus** or speak with **Tracey Driscoll**, Area Sales Manager, Globus family of brands.

Please Support our Sponsors



Locally Owned Funeral Directors
Caring in our Community

Is dealing with a
**Locally Owned
Funeral Director**
important to you?



Wellington
56 Onepu Road, Kilbirnie
Telephone **387-8301**
Email: harbour@funeral-link.co.nz
www.harbourcityfunerals.co.nz

WEST PLAZA HOTEL LOCATION - COMFORT - STYLE

**Weekend Special
\$125**

One night's stay & cooked breakfast for two
Available Friday, Saturday and Sunday
Subject to availability

110 - 116 Wakefield Street, Wellington
p 0800 731 444
e reservations@westplaza.co.nz
book now westplaza.co.nz



Christian Supplies
www.christiansupplies.co.nz

- See our monthly newsletter in 'The Angelus'
- Freephone 0508 988 988 - Freefax 0508 988 989
email: order@pleroma.org.nz

GLOBUS

Sistine Chapel, Vatican City

The Angelus

St Mary of the Angels Parish

Church and Presbytery:

**17 Boulcott Street,
Wellington Central**
Telephone: **473 8074**
Parish website: www.smoa.org.nz

St Mary of the Angels is a diverse community which seeks to praise and thank God in a place of calm and beauty and strives to be Christ alive in Central Wellington

Parish Priest

Fr Barry Scannell SM
smoapp@xtra.co.nz

Assistant Priest

Fr Tom O'Connor SM

Adult Education

Fr Michael Young SM

Pastoral Worker

Sr Frances Gibbs CSB

Director of Music

Robert Oliver
robert.oliver@paradise.net.nz

Parish Accountant

Jeanette Temelo
smoamanager@xtra.co.nz

Parish Office

smoaoffice@xtra.co.nz

MASSES

Sunday 7am, 9am, 11am, 5pm

Monday to Friday 7:30am, 12:05pm,
& 5:15pm

Saturday 11am

EACH MONTH

4th Saturday 11am Mass with
Sacrament of Anointing

ADORATION

Monday to Friday 6:45am-7:30am

Friday 11am-noon

RECONCILIATION

Monday to Thursday 11:30am-noon
12:30pm-1:00pm
4:30pm-5:00pm

Friday 11:00am-noon
12:30pm-1:00pm
4:30pm-5:00pm
Saturday 10:30am-11:00am
4:00pm-5:00pm

23 March 2014, 3rd Sunday of Lent - Year A

University Students & SMAYACs Pot-luck dinner

There will be a potluck dinner tonight following the 5pm Mass at St Joseph's, Mt Victoria, to welcome back all university students and young adults. This is a great opportunity to gather and meet other young adults from our Parish. Invite your friends and bring a plate of food to share. For more information please contact James Boyle 027 778 9774.

Planned Giving Envelopes

Planned Giving envelopes for the next financial year are available today. The envelopes are labelled alphabetically by surname and can be found in the entrance foyer of each Church after Mass on Sundays, and in the entrance to the St Mary of the Angels Parish Hall during the week. Please collect your envelopes as it will save us the cost of postage.

If you are not part of the Planned Giving process you are very welcome to contribute to the Parish in this way. We really need the generosity of all parishioners at this time of real financial challenge. Please contact the Parish Office for details.

Planned Giving and Donations

As we come to the end of the tax year (31 March) it is a good time to review your financial commitment to the Parish. Any lump sum given before 31 March can be claimed in the current tax year. A tax rebate of 33.3% may be claimed on all your contributions. Tax receipts will be issued in April for the 2013/2014 financial year.

Presentation of Seismic Design Plans

Some parishioners were not able to attend the Parish meeting on 2nd March at which the Seismic Design Plans were presented. If enough Parishioners are interested we will hold a second presentation on Sunday 30th March at 10.30am in the Parish Hall (we have only received interest from two parishioners so far). Please contact the Parish Office by 25th March if you are interested in attending the presentation.

Parish Office contact details: smoaoffice@xtra.co.nz or phone (04) 473 8074.

Fr Barry Scannell sm, Parish Priest

INVEST IN YOUR FAITH

CATHOLIC DEVELOPMENT FUND of WELLINGTON

This Week's Readings

First Reading	Exodus	17:3-7
<i>Give us water to drink.</i>		
Second Reading	Rom	5:1-2, 5-8
<i>The love of God had been poured into our hearts by the Holy Spirit which has been given to us.</i>		
Gospel Reading	John	4:5-42
<i>The water that I shall give will turn into a spring of eternal life.</i>		

Next Week's Readings

First Reading	Sam	16:1. 6-7. 10-13
Psalm	22	
Second Reading	Eph	5:8-14
Gospel Reading	John	9:1-41

Last Sunday's Collection

Total	\$3,994
Parish Expenses	\$2,836
Support of House	\$1,158



Thank You from St Vincent de Paul

The St Mary of the Angels Conference of the Society of St Vincent de Paul would like to thank the Parish and visitors for the generous cash donations received over the past six months.

The money is used to assist us in our work with those in need, especially those in the St Mary of the Angels and inner city community.

We feel blessed by your support.

God bless you all,

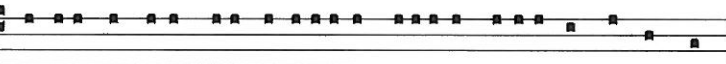
James Ring, *President*

Responsorial Psalm 94

**R. If today you hear his voice,
harden not your hearts.**

Come, ring out our joy to the Lord;
hail the rock who saves us.
Let us come before him, giving thanks,
with songs let us hail the Lord. **R**

Come in; let us bow and bend low;
let us kneel before the God who made us
for he is our God and we
the people who belong to his pasture,
the flock that is led by his hand. **R**
O that today you would listen to his voice!
'Harden not your hearts as at Meribah,
as on that day at Massah in the desert
when your fathers put me to the test;
when they tried me, though they saw my work.' **R**



Hódie, si vocem ejus audiéritis, nolíte obduráre cor-da ves-tra:

Today if thou shalt hear his voice, harden not your hearts.

CARITAS Lenten Appeal

CARITAS Lenten
Appeal Envelopes are
available for collection
after Mass today.

Please give generously.



Mass has been offered for:

Recently Deceased: Deidre Sweeney, Su-Yen Bok, Fr Frank Garty

Anniversaries: John Keating, Coralie Leyland, Joan Smart, Michael O'Calloghan, Elizabeth O'Calloghan, Bina Corgoran, Fr Michael Tomasi sm, Anita Rae

Prayers for the Sick: Richard Wright, Chia Yuet Lin, Tham Ynet Lin, Philip Birch, John Foden, Ann Ross, Lisa Alo, Mary Egan, Maureen McDonald, Fr Craig Larkin sm, Reny Thomas, Colleen Pocock, Barbara Ross, Helen Havasi, Patricia Smyth, Dulcie Campbell, Joanna Veltman, Losalia Leo, Kathleen Phelan.



Please remember in your prayers, these and the other sick of the Parish. If you know of anyone who is confined

Prayer for Seismic Strengthening Work

Gracious God, Creator of the Universe,
you made us in your own image and likeness.

You gave us wisdom and understanding,
grateful hearts and creative minds.

We pray that our beautiful Church will be
strengthened against the peril of earthquake
through the generosity of parishioners,
the community of Wellington
and people throughout New Zealand.

We ask, Lord, that you abundantly bless
those who have already donated funds,
skill and expertise to this project.

May St Mary of the Angels Church
be a symbol of a unified community
that will gather to praise and thank you.

Mary our Mother, pray for us.

40 Days for Life

You are invited to join other Christians in the 40 Days for Life Campaign; 40 days of prayer and fasting for an end to abortion. The vigil commenced at the beginning of Lent and ends on the 13th April. A peaceful prayer vigil will take place outside the abortion clinic at Wellington Hospital daily from 8am to 8pm. Email clare.fli@xtra.co.nz for further details.

This Friday, 28th March, at 7.30pm in St Anne's Hall, Emmett Street, Newtown there will be a DVD screening of Abby Johnson's inspirational story. It's never too late to join the praying and fasting to end abortion. Bring a friend! Enquiries to Family Life International on 237 8343.

SMAYACs Prayer Group

All young adults and the young at heart are invited to a time of prayer, readings and reflection every Thursday at 6.00pm in the Parish Hall.

Ministers of the Word and Eucharistic Ministers needed

We require more Readers and Eucharistic Ministers, especially for the 12pm and 5pm Masses on Sunday. If you are able to assist in this ministry please contact the Parish Office (473 8074) or approach Sister Frances Gibbs after Mass.

Lenten Reflections

All are invited to join the Lenten Reflection group who meet on Mondays during Lent from 6 -7pm in the Boardroom of the Presbytery.

The reflection's are based around Pope Francis' Inauguration Homily where he said: "Today too, amid so much darkness, we need to see the light of hope and to be men and women who bring hope to others".

Please email Monica O'Connell for more details: toobeautifulforyou@gmail.com

Stewardship Reflection Day

Archbishop John Dew invites you to a Stewardship Reflection Day. The theme is: The Joy of the Gospel, Pope Francis' exhortation, Evangelii Gaudium. The day will take place at St Joseph's Church, Mt Victoria on Saturday 29 March from 9.30am - 4pm. Please RSVP by 25 March to Ann Williams: a.williams@wn.catholic.org.nz or call 04 496 1777

TO KEEP UP TO DATE WITH EVENTS AROUND
THE WELLINGTON ARCHDIOCESE VISIT
WWW.WN.CATHOLIC.ORG.NZ

Adult Education in the Faith Ministry

First Level Course

Introduction to Christian Spirituality

27th March, 7.30pm - 9.30pm at Pa Maria, 78 Hobson St.

Theme: Spirituality and the Christian Mysteries.

Session 6: Trinity: Foundation of All the Christian Mysteries and of Christian Spirituality

Second Level Course (Restricted)

The Incomparable God

26th March, 5.30pm - 7.30pm in the Parish Hall.

Theme: Israel's Core Testimony. **Session 8:** Testimony in Verbal Sentences (Part 6) – The God Who Commands (continued). The God Who Leads.

LT
McGuinness
LIMITED
BUILDING CONTRACTORS
9 Francis Place,
PO Box 9639, Wellington
Phone (04) 384 8455 Fax (04) 801 8455
Email: ltm@mcguinness.co.nz

Little Peckish

Café
Feeling a little peckish?
Dukes Arcade • Great food, coffee, service
Office catering available
Phone 499 7769 • Mobile 0274 461 650

NEW WORLD
WELLINGTON CITY
279 WAKEFIELD ST.
OPEN 7 DAYS | 7AM - MIDNIGHT
WWW.WGTNCITYNEWWORLD.CO.NZ

Catholic Development Fund of Wellington

Save with the CDF and you'll be helping the needy;
each year all of CDF's operating surplus goes to the
Archdiocese for social caring and pastoral services.

Saving with us helps your Archdiocese.
Call 0800 4 233 233 or visit www.cdf.co.nz

