

For Your Diaries : 2014

18 March, St Pats College Old Boys Association AGM

Calling all St Pats Town & Stream Old Boys: All are invited to attend our Annual General Meeting on Tuesday 18th March 2014 at 6pm, in the staff room of St Patricks College, Kilbirnie. Mass in the Chapel will commence at 5.30pm. The AGM will be followed by refreshments and a chance for attendees to catch up with other Old Boys.

18 March, Holy Hour at the Cathedral

All are invited to a Holy Hour on Tuesday, 18 March, 7.30pm in the Cathedral chapel to pray for vocations to priesthood and religious life. The Holy Hour will include prayers, Scripture, times of silence and conclude with Benediction followed by supper.

19 March, Picnic at Parliament

Archbishop John Dew invites you to a picnic at Parliament to raise awareness of inequality and poverty in New Zealand. Wednesday 19 March 5.30 – 7.30pm on the lawns in front of the Beehive. Please bring food to share. For more information phone Mary-Ann Greaney (04) 496 1784.

23 March, Legion of Mary Annual Acies Consecration Service

All Religious, active, auxiliary members and parishioners are warmly invited to the Annual Acies Consecration Service of the Legion of Mary at St Patrick's Church, Kilbirnie on Sunday, 23rd March at 2:00pm. The celebrant will be Monsignor Jean-Sylvain Emien.

23 March, SMAYACs Potluck dinner

All university students and young adults are invited to a pot luck dinner on Sunday 23rd March following the 5pm Mass at St Joseph's Church, Mt Victoria. Invite your friends and bring a plate of food to share. Contact James Boyle for more information: smayacs@gmail.com or 027 778 9774.

28 March, Healing Service with Fr John Rea

There will be a Healing Service with Fr John Rea on Friday, 28 March, beginning at 7.30pm in Sacred Heart Cathedral. All are welcome. Come and experience the healing touch of Jesus.

29 March, Stewardship Reflection Day with Archbishop John Dew

Archbishop John Dew invites you to a Stewardship Reflection Day on Saturday 29 March from 9.30am - 4pm at St Joseph's Church, Mt Victoria. RSVP by 25 March to Ann Williams at a.williams@wn.catholic.org.nz or by calling 04 496 1777

Quality Te Aro Offices 5-7 Vivian Street, Wellington

Great location close to Cafe district
Busy arterial road
Air conditioned
Car parking available

Office suites available at an affordable price. Semi-serviced suites (approx 18sqm) that are fully furnished. There is also a company floor area (approx 200sqm) with 5x partitioned offices, Board room and Meeting room. Shared kitchen and shower facilities. Car parking available in the building at an additional rate.

This is a must see for new businesses on a budget. Earthquake Engineering Evaluation IEP Report NBS 80 %

Contact by e-mail for further information: mariabaldock@gmail.com

This newsletter is kindly sponsored by:
Michael Burrowes
of Burrowes and Company
Barristers and Solicitors
phone (04) 473 7733

BURROWES
and Company

Barristers and Solicitors

GLOBUS RELIGIOUS TRAVEL

Faith-based travel is the perfect way to build community. Explore the stories, follow in the footsteps of spiritual leaders and discover the roots of our faith.

For more information call **0800 Globus** or speak with **St Mary of the Angels** parishioner **Tracey Driscoll**, Area Sales Manager, Globus family of brands.

GLOBUS

Sistine Chapel, Vatican City

Please Support our Sponsors



Locally Owned Funeral Directors
Caring in our Community

Is dealing with a
**Locally Owned
Funeral Director**
important to you?



Wellington
56 Onepu Road, Kilbirnie
Telephone 387-8301
Email: harbour@funeral-link.co.nz
www.harbourcityfunerals.co.nz

WEST PLAZA HOTEL

LOCATION • COMFORT • STYLE

Weekend Special

\$125

One night's stay & cooked breakfast for two

Available Friday, Saturday and Sunday
Subject to availability

110 – 116 Wakefield Street, Wellington
p 0800 731 444

e reservations@westplaza.co.nz
book now westplaza.co.nz



Christian Supplies

www.christiansupplies.co.nz

- See our monthly newsletter in 'The Angelus'
- Freephone 0508 988 988 - Freefax 0508 988 989
email: order@pleroma.org.nz

The Angelus

St Mary of the Angels Parish

Church and Presbytery:

**17 Boulcott Street,
Wellington Central**

Telephone: 473 8074

Parish website: www.smoa.org.nz

St Mary of the Angels is a diverse community which seeks to praise and thank God in a place of calm and beauty and strives to be Christ alive in Central Wellington

Parish Priest

Fr Barry Scannell SM
smoapp@xtra.co.nz

Assistant Priest

Fr Tom O'Connor SM

Adult Education

Fr Michael Young SM

Pastoral Worker

Sr Frances Gibbs CSB

Director of Music

Robert Oliver
robert.oliver@paradise.net.nz

Parish Accountant

Jeanette Temelo
smoamanager@xtra.co.nz

Parish Office

smoaoffice@xtra.co.nz

MASSES

Sunday 7am, 9am, 11am, 5pm

Monday to Friday 7:30am, 12:05pm,
& 5:15pm

Saturday 11am

EACH MONTH

4th Saturday 11am Mass with
Sacrament of Anointing

ADORATION

Monday to Friday 6:45am-7:30am

Friday 11am-noon

RECONCILIATION

Monday to Thursday 11:30am-noon
12:30pm-1:00pm

Friday 11:00am-noon
12:30pm-1:00pm

4:30pm-5:00pm
Saturday 10:30am-11:00am
4:00pm-5:00pm

16th March 2014, 2nd Sunday of Lent - Year A

University Students & SMAYACs Pot-luck dinner

A warm welcome back to all our students! The first University semester is now well underway and we would like to invite all university students and young adults to a pot luck dinner on Sunday 23rd March following the 5pm Mass at St Joseph's Church, Mt Victoria. This is a great opportunity to gather and meet other young adults from our Parish. Invite your friends and bring a plate of food to share. For more information please contact James Boyle: smayacs@gmail.com or 027 778 9774.

Planned Giving Envelopes

Planned Giving envelopes for the next financial year are available today. The envelopes are labelled alphabetically by surname and can be found in the entrance foyer of each Church after Mass on Sundays, and in the entrance to the St Mary of the Angels Parish Hall during the week.. Please collect your envelopes as it will save the us cost of postage.

If you are not part of the Planned Giving process you are very welcome to contribute to the Church in this way. We really need the generosity of all parishioners at this time of real financial challenge. Please contact the Parish Office for details.

Planned Giving and Donations

As we come to the end of the tax year (31 March) it is a good time to review your financial commitment to the Parish. Any lump sum given before 31 March can be claimed in the current tax year. A tax rebate of 33.3% may be claimed on all your contributions. Tax receipts will be issued in April for the 2013/2014 financial year.

Presentation of Seismic Design Plans

Some parishioners were not able to attend the Parish meeting on 2nd March at which the Seismic Design Plans were presented. If enough Parishioners are interested we will hold a second presentation on Sunday 30th March at 10.30am in the Parish Hall. Please contact the Parish Office by 25th March if you are interested in coming to the presentation.

Parish Office contact details: smoaooffice@xtra.co.nz or phone (04) 473 8074.

Fr Barry Scannell sm, Parish Priest

INVEST IN YOUR FAITH

CATHOLIC DEVELOPMENT FUND of WELLINGTON

This Week's Readings

First Reading	Gen	12:1-4
<i>The call of Abraham, the father of God's people.</i>		
Second Reading	2 Tim	1:8-10
<i>God has saved us, and called us to be holy.</i>		
Gospel Reading	Matthew	17:1-9
<i>His face shone like the sun.</i>		

Next Week's Readings

First Reading	Exodus	17:3-7
Psalm	94	
Second Reading	Rom	5:1-2, 5-8
Gospel Reading	John	4:5-42

Last Sunday's Collection

Total	\$4,754
Parish Expenses	\$3,375
Support of House	\$1,379



40 Days for Life

You are invited to join other Christians in the 40 Days for Life Campaign; 40 days of prayer and fasting for an end to abortion. The vigil commenced at the beginning of Lent and ends on the 13th April. A peaceful prayer vigil will take place outside the abortion clinic at Wellington Hospital daily from 8am to 8pm. Email clare.fli@xtra.co.nz for further details.

Engaged Encounter

Engaged Encounter is a weekend experience for couples intending to be married. Weekends in 2014 are 28-30 March, 11-13 July, 21-23 November. Weekends are held at the Home of Compassion, Island Bay. For more details go to the website at www.ceewellington.org.nz or phone Kate & Simon Olsen Telephone (04) 801 6192.

Mass has been offered for:

Recently Deceased: Su-Yen Bok, Fr Barry Edwards, Fr Chris Penders A.A, Alieen Gallagher, Leslie Kriebel, Don MacIver

Anniversaries: Baldo Sutich, Donal Duerr, Rita Kirwan, Denis Boyd

Prayers for the Sick: Colleen Pocock, Philip Birch, John Foden, Ann Ross, Reny Thomas, Barbara Ross, Fr Craig Larkin sm, Helen Havasi, Mary Egan, Lisa Alo, Patricia Smyth, Maureen McDonald, Dulcie Campbell, Joanna Veltman, Losalia Leo, Kathleen Phelan.
Please remember in your prayers, these and the other sick of the Parish. If you know of anyone who is confined to their home or who needs a visit with Holy Communion, please contact Sister Frances at the Parish Office.



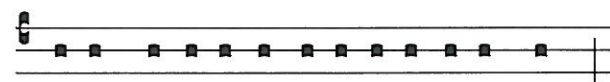
Responsorial Psalm 32

R. Lord, let your mercy be on us, as we place our trust in you.

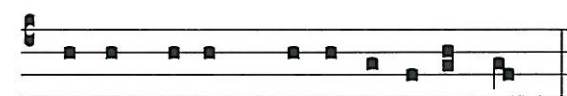
The word of the Lord is faithful and all his works to be trusted. The Lord loves justice and right and fills the earth with his love. **R**

The Lord looks on those who revere him, on those who hope in his love, to rescue their souls from death, to keep them alive in famine. **R**

Our soul is waiting for the Lord. The Lord is our help and our shield. May your love be upon us, O Lord, as we place all our hope in you. **R**



Fi- at mi-se-ri-cordi- a tu- a super nos:



quemadmodum spe-ra-vimus in te.

Let thy mercy, O Lord, be upon us, as we have hoped in thee.



CARITAS Lenten Appeal

CARITAS Lenten Appeal Envelopes are available for collection after Mass today. Please give generously.

Prayer for Seismic Strengthening Work

Gracious God, Creator of the Universe, you made us in your own image and likeness.

You gave us wisdom and understanding, grateful hearts and creative minds.

We pray that our beautiful Church will be strengthened against the peril of earthquake through the generosity of parishioners, the community of Wellington and people throughout New Zealand.

We ask, Lord, that you abundantly bless those who have already donated funds, skill and expertise to this project.

May St Mary of the Angels Church be a symbol of a unified community that will gather to praise and thank you.

Mary our Mother, pray for us.

Adult Education in the Faith Ministry

First Level Course: Introduction to Christian Spirituality

20th March from 7.30pm - 9.30pm at Pa Maria, 78 Hobson St.

Theme: Spirituality and the Christian Mysteries

Session 5: The Spirit, the Soul of the Church the Body of Christ (Part 2)

Second Level Course (Restricted): The Incomparable God

19th March from 5.30pm - 7.30pm in the Parish Hall.

Theme: Israel's Core Testimony

Session 7: B. Testimony in Verbal Sentences (Part 5) - B.4. The God Who Commands (continued).

Michael Young, S.M.

Stewardship Reflection Day

Archbishop John Dew invites you to a Stewardship Reflection Day. The theme is: The Joy of the Gospel, Pope Francis' exhortation, *Evangelii Gaudium*. The day will take place at St Joseph's Church, Mt Victoria on Saturday 29 March from 9.30am - 4pm. Please RSVP by 25 March to Ann Williams: a.williams@wn.catholic.org.nz or call 04 496 1777



Save with the CDF and you'll be helping the needy; each year all of CDF's operating surplus goes to the Archdiocese for social caring and pastoral services.

Saving with us helps your Archdiocese.
Call 0800 4 233 233 or visit www.cdf.co.nz



SMAYACs Prayer Group

All young adults and the young at heart are invited to a time of prayer, readings and reflection every Thursday at 6.00pm in the Parish Hall.

St Vincent de Paul

The next St Vincent de Paul Society meeting is on Tuesday 18th March at 6pm in the St Mary of the Angels Presbytery. New members are welcome.

Junior Sports Catholic Rugby Club

Marist St Pats welcomes children for the upcoming 2014 junior rugby season, from Nursery grade through to Under 13's.

MSP offers: experienced junior coaches; Wellington's best rugby facilities; a great family friendly environment; free rugby ball and mouth-guard.

For more information visit www.msprugby.co.nz

Lenten Reflections

All are invited to join the Lenten Reflection group who meet on Mondays during Lent from 6 -7pm in the Boardroom of the Presbytery.

The reflection's are based around Pope Francis' Inauguration Homily where he said: "Today too, amid so much darkness, we need to see the light of hope and to be men and women who bring hope to others".

Please email Monica O'Connell for more details: toobeaautifulforyou@gmail.com

Picnic at Parliament

On Wednesday 19 March from 5.30-7.30pm Archbishop John Dew is holding a 'picnic at Parliament' to raise awareness of inequality and poverty in New Zealand. All are invited to meet on the lawns in front of the Beehive and participate in this event. All members of Parliament have been invited and speakers will include Archbishop John Dew, Monsignor Gerard Burns, Teresa Homan (BEST) and Trevor McGlinchey (NZCCSS). Please bring food to share. For more information contact Mary-Ann Greaney 496 1784.

LT McGuinness LIMITED
BUILDING CONTRACTORS
9 Francis Place,
PO Box 9639, Wellington
Phone (04) 384 8455 Fax (04) 801 8455
Email: ltm@mcguinness.co.nz

Little Peckish Cafe
Feeling a little peckish?
Dukes Arcade • Great food, coffee, service
Office catering available
Phone 499 7769 • Mobile 0274 461 650

NEW WORLD WELLINGTON CITY
279 WAKEFIELD ST.
OPEN 7 DAYS | 7AM - MIDNIGHT
WWW.WGTNCITYNEWWORLD.CO.NZ