

## This Week's Readings

**First Reading** Sirach 15:15-20  
*He never commanded anyone to be godless.*

**Second Reading** Corinthians 2:6-10  
*God in his wisdom predestined our glory before the ages began.*

**Gospel Reading** Matthew 5:17-37  
*Such was said to your ancestors; but I am speaking to you.*

## Next Week's Readings

**First Reading** Leviticus 19:1-2  
**Psalm** 102  
**Second Reading** Corinthians 3:16-23  
**Gospel Reading** Matthew 5:38-48

## Last Sunday's Collection

Total	\$3,993
Parish Expenses	\$2,835
Support of House	\$1,158



## First Sacraments Programme 2014 Reconciliation, Confirmation and First Holy Communion

Sacred Heart Parish, Thorndon; St Mary of the Angels, Central Wgtn. and Otari Parish – St Teresa's, Karori and St Thomas More, Wilton, invite registration from children who wish to be part of the First Sacraments Programme. Registration forms are available from the Church or Parish Office. The deadline for enrolment is Friday 28<sup>th</sup> February 2014.

## Engaged Encounter

Engaged Encounter is a weekend experience for couples intending to be married. Weekends in 2014 are 28-30 March, 11-13 July, 21-23 November. Weekends are held at the Home of Compassion, Island Bay. For more details go to the website at <http://www.ceewellington.org.nz> or phone Kate & Simon Olsen Telephone (+64 4) 801 6192.

## Mass has been offered for:

**Recently Deceased:** Su-Yen Bok, Rosalie Piodena, Nora Stagg.

**Anniversaries:** Grace Smith, Fr. Ken Scully sm, Nomaza Sidma-Jacob, Father Paul Bergin s.m, Victor Carvalho.

**Prayers for the Sick:** Miriam Menzies, Colleen Pocock, Philip Birch, John Foden, Ann Ross, Reny Thomas, Barbara Ross, Fr Craig Larkin sm, Helen Havasi, Mary Egan, Lisa Alo, Patricia Smyth, Maureen McDonald, Dulcie Campbell, Joanna Veltman, Losalia Leo, Kathleen Phelan.



*Please remember in your prayers, these and the other sick of the Parish. If you know of anyone who is confined to their home or who needs a visit with Holy Communion, please contact Sister Frances at the Parish Office.*

## Responsorial Psalm 118

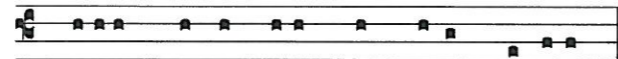
### R. Happy are they who follow the law of the Lord!

They are happy whose life is blameless,  
 who follow God's law!  
 They are happy those who do his will,  
 seeking him with all their hearts. **R**

You have laid down your precepts  
 to be obeyed with care.  
 May my footsteps be firm  
 to obey your statutes. **R**

Bless your servant and I shall live  
 and obey your word.  
 Open my eyes that I may consider  
 the wonders of your law. **R**

Teach me the demands of your statutes  
 and I will keep them to the end.  
 Train me to observe your law,  
 to keep it with my heart. **R**



Be-áti qui ámbulant in lege Dómini

*Blessed are they that walk in the law of the Lord*

## Offertory Hymn For 12pm Mass

Number 67

'A Mighty Fortress'

## Lenten Reflections

There will be a Lenten Reflection group beginning on Monday 3 March from 6 -7pm in the Boardroom of the Presbytery. The reflection will be based around Pope Francis' Inauguration Homily where he said: "Today too, amid so much darkness, we need to see the light of hope and to be men and women who bring hope to others".

If you would like to join this group please contact Monica O'Connell at [toobeautifulforyou@gmail.com](mailto:toobeautifulforyou@gmail.com) for more details.

## Stewardship Reflection Day

Archbishop John Dew invites you to a Stewardship "Reflection" Day. The theme is: The Joy of the Gospel, Pope Francis' exhortation, Evangelii Gaudium. The day will take place at St Joseph's Church, Mt Victoria, Wellington on Saturday 29 March and will commence at 9.30am.

Please RSVP by 25 March to Ann Williams at [a.williams@wn.catholic.org.nz](mailto:a.williams@wn.catholic.org.nz) or by calling 04 496 1777

## Catholic Social Services Street Day Appeal

Collectors are needed in Wellington and Petone on Thursday 27 February 2014 for the Catholic Social Services Street Day Appeal. If you are able to give an hour of your time to help please phone Lesley or Vivien on 385 8642 or email [v.chiu@wn-tholicsocialservices.org.nz](mailto:v.chiu@wn-tholicsocialservices.org.nz).

## Teachers Commissioning Mass

You are warmly invited to join with teachers and support staff in Catholic schools to celebrate Eucharist and to give support as they are commissioned and blessed in our ministry at 5.30pm Wednesday 26<sup>th</sup> February 2014 Sacred Heart Cathedral, Hill Street, Thorndon, Wellington. "**Jesus' Mission - Our Mission**". For further information please contact Sue Davis, Ph 04 4961710 or email: [s.davis@wn.catholic.org.nz](mailto:s.davis@wn.catholic.org.nz)

## Adult Education in the Faith Ministry

### First Level Course: Introduction to Christian Spirituality

20 February from 7.30pm - 9.30pm at Pa Maria, 78 Hobson Street.

**CM-1:** Introduction and the Presence of Grace (Part 1)

### Second Level Course (Restricted): The Incomparable God – the Testimony of Israel

19 February from 5.30pm - 7.30pm in the Parish Hall.

**I-CT-3:** B. Testimony in Verbal Sentences (Part 1) – B.1. The God Who Creates  
 Michael Young, S.M.

TO KEEP UP TO DATE WITH EVENTS AROUND THE WELLINGTON ARCHDIOCESE  
 VISIT: [WWW.WN.CATHOLIC.ORG.NZ](http://WWW.WN.CATHOLIC.ORG.NZ)

## SMAYACs Prayer Group

All young adults and the young at heart are invited to a time of prayer, readings and reflection every Thursday at 6.00pm in St Mary of the Angels Parish Hall. The first Theology on Tap for this year will be held on Sunday 23<sup>rd</sup> February 6.30pm at Hotel Bristol. This month's speaker is Fr Vaughan Leslie.

## St Vincent de Paul

The next St. Vincent de Paul meeting is this Tuesday February 18<sup>th</sup> at 6pm in the Parish Hall. New members are most welcome.

## Greenstone Doors Information Evening

Greenstone Doors is a new charitable trust operating in Central Lower Hutt with a focus on a positive experience in pregnancy and parenting. Volunteers are needed for fielding enquiries and pregnancy tests, supportive roles, counselling, manning the reception area, admin and more. Training will be provided. Find out more at an Information Evening: 26 February at 7pm, 15 Dudley St, Lower Hutt. Enquiries: Wendy Hill, [info@greenstonedoors.co.nz](mailto:info@greenstonedoors.co.nz) or 0272549222

## 40 Days for Life

From March 5 through April 13, you're invited to join other Christians for 40 Days for Life – 40 days of prayer and fasting for an end to abortion. If you'd like more information please contact: PH. 2378343 or [clare.fli@xtra.co.nz](mailto:clare.fli@xtra.co.nz).

**LT McGuinness LIMITED**  
 BUILDING CONTRACTORS  
 9 Francis Place,  
 PO Box 9639, Wellington  
 Phone (04) 384 8455 Fax (04) 801 8455  
 Email: [ltm@mcguinness.co.nz](mailto:ltm@mcguinness.co.nz)

**Little Peckish Café**  
*Feeling a little peckish?*  
 Dukes Arcade • Great food, coffee, service  
 Office catering available  
 Phone 499 7769 • Mobile 0274 461 650

**NEW WORLD WELLINGTON CITY**  
 279 WAKEFIELD ST.  
 OPEN 7 DAYS | 7AM - MIDNIGHT  
[WWW.WGTNCITYNEWWORLD.CO.NZ](http://WWW.WGTNCITYNEWWORLD.CO.NZ)



Save with the CDF and you'll be helping the needy; each year all of CDF's operating surplus goes to the Archdiocese for social caring and pastoral services.

Saving with us helps your Archdiocese.  
 Call 0800 4 233 233 or visit [www.cdf.co.nz](http://www.cdf.co.nz)



## For Your Diaries : 2014

### 20 February, Joshua Catholic Men's Fellowship

Joshua Catholic Men's Fellowship Wellington Branch invites all men to come and join their "Praise and Worship" meeting. The meeting will take place at 7.30pm at Connolly Hall, Guilford Tce, Thorndon (behind Sacred Heart Cathedral). Contact David if you wish to know more, on 387 9714 .

### 22 February, Dove Catholic Fellowship for Women

Dove Wellington invites all women to their first meeting for 2014 at at Connolly Hall (off Hill St) Thorndon, from 1.30 – 3.30pm. Speaker: Sheila Libano. Theme: Being Set Free. Please call Sandra on 475 5541 with any enquiries.

### 28 February – 2 March 2014, Rachel's Vineyard Retreat

A Retreat weekend for those whose lives have been touched by abortion. Information and support is available for men and women. Enquiries are strictly confidential. Contact Wendy Hill on 027 2549222 or email- info@rachelsvineyard.org.nz or visit www.rachelsvineyard.org.nz

### 1 March, A Lenten Retreat

A Lenten Retreat will be held on Saturday 1 March from 10.30am until 5.00pm. "Lent as a door to a deeper, intimate and powerful relationship with Jesus". An impressive line of Speakers, Reflections, Adoration and Confessions. Organised by the Centre for Divine Mercy and The ICPE Mission at St Gerard Monastery. It will be held at Sacred Heart Cathedral, Hill Street, Thorndon.

### 2 March, Eucharistic Congress Convention

The Wellington Eucharistic Convention program will be held at Saint Patrick's College, Upper Hutt and commences at 8.00am with Adoration. The day will include talks, prayers, and reconciliation and concludes with Mass at about 5.00pm.

### 3 March, Lenten Reflections

Lenten Reflections will begin on Monday 3rd March from 6 - 7pm in the Boardroom of the Presbytery. They will be held each Monday during Lent.

**Traditional Latin Mass** is celebrated each Sunday at 12.30pm at Pa Maria, 78 Hobson Street, Thorndon. Enquiries: Neil Coup 021896924.

## Quality Te Aro Offices

5-7 Vivian Street, Wellington

Great location close to Cafe district  
Busy arterial road  
Air conditioned  
Car parking available

Office suites available at an affordable price. Semi-serviced suites (approx 18sqm) that are fully furnished. There is also a company floor area (approx 200sqm) with 5x partitioned offices, Board room and Meeting room. Shared kitchen and shower facilities. Car parking available in the building at an additional rate.

This is a must see for new businesses on a budget. Earthquake Engineering Evaluation IEP Report NBS 80 %

Contact by e-mail for further information: mariabaldock@gmail.com

This newsletter is kindly sponsored by:

Michael Burrowes  
of Burrowes and Company  
Barristers and Solicitors  
phone (04) 473 7733

**BURROWES**  
and Company

Barristers and Solicitors

## Please Support our Sponsors



Locally Owned Funeral Directors  
Caring in our Community

Is dealing with a  
**Locally Owned  
Funeral Director**  
important to you?

**Harbour City**

FUNERAL HOME

Wellington  
56 Onepu Road, Kilbirnie  
Telephone 387-8301  
Email: harbour@funeral-link.co.nz  
www.harbourcityfunerals.co.nz

## WEST PLAZA HOTEL

LOCATION • COMFORT • STYLE

Weekend Special

**\$125**

One night's stay & cooked breakfast for two

Available Friday, Saturday and Sunday  
Subject to availability

110 – 116 Wakefield Street, Wellington  
p 0800 731 444

e reservations@westplaza.co.nz  
book now westplaza.co.nz



**Christian Supplies**

www.christiansupplies.co.nz

- See our monthly newsletter in 'The Angelus'  
- Freephone 0508 988 988 - Freefax 0508 988 989  
email: order@pleroma.org.nz

## GLOBUS RELIGIOUS TRAVEL

**GLOBUS**

Faith-based travel is the perfect way to build community. Explore the stories, follow in the footsteps of spiritual leaders and discover the roots of our faith.

For more information call **0800 Globus** or speak with *St Mary of the Angels* parishioner **Tracey Driscoll**, Area Sales Manager, Globus family of brands.

Sistine Chapel, Vatican City

# The Angelus

St Mary of the Angels Parish

**Church and Presbytery:**

**17 Boulcott Street,**

**Wellington Central**

**Telephone: 473 8074**

**Parish website: www.smoa.org.nz**

*St Mary of the Angels is a diverse community which seeks to praise and thank God in a place of calm and beauty and strives to be Christ alive in Central Wellington*

**Parish Priest**

Fr Barry Scannell SM

smoapp@xtra.co.nz

**Assistant Priest**

Fr Tom O'Connor SM

**Adult Education**

Fr Michael Young SM

**Pastoral Worker**

Sr Frances Gibbs CSB

**Director of Music**

Robert Oliver

robert.oliver@paradise.net.nz

**Parish Accountant**

Jeanette Temelo

smoamanager@xtra.co.nz

**Parish Office**

smoaooffice@xtra.co.nz

### MASSES

Sunday 7am, 9am, 11am, 5pm

Monday to Friday 7:30am, 12:05pm, & 5:15pm

Saturday 11am

### EACH MONTH

4th Saturday 11am Mass with Sacrament of Anointing

### ADORATION

Monday to Friday 6:45am-7:30am

Friday 11am-noon

### RECONCILIATION

Monday to Thursday 11:30am-noon  
12:30pm-1:00pm  
4:30pm-5:00pm

Friday 11:00am-noon  
12:30pm-1:00pm  
4:30pm-5:00pm

Saturday 10:30am-11:00am  
4:00pm-5:00pm

## 16th February 2014, 6th Sunday in Ordinary Time - Year A

### Seismic Design Plans

The design plans for the seismic strengthening of the Church are ready for presentation to the Parish. This will take place in our Parish Hall on:  
**Sunday 2 March at 2pm**

All parishioners are invited to attend this very important meeting. These plans are the fruit of several months of dedicated commitment by our consulting engineers, architects and building contractor. The plans will clearly set out what needs to be done to strengthen the Church and the enormous financial challenge this presents both to the Parish and the Archdiocese of Wellington. Please make an effort to attend this presentation.

### Car -Parking

The Church car-park will be closed from Monday 24 February until Saturday 1 March. There will be workmen on site carrying out 'drilling' and investigative work around the foundations of the Church. Please do not try and access this area during this time because your car will be towed away.

### Ash Wednesday

We have received an approach from St John's Presbyterian Church regarding a joint Ash Wednesday liturgy. I have indicated that we would be very happy to participate. That service will be at St John's Presbyterian Church at: **5.15pm on Wednesday 5 March.**

There will be no 5.15pm Mass in our Parish that day. Please make an effort to participate in this ecumenical service with St John's who have been so overwhelmingly generous to us during our time of need.

*Father Barry Scannell s.m.*  
*Parish Priest*

# INVEST IN YOUR FAITH

CATHOLIC DEVELOPMENT FUND of WELLINGTON