

For Your Diaries : 2013

1 December, 7pm Advent Carol Service

All are invited to the St Mary of the Angels and St John's Presbyterian Church combined Advent Carols Service on Sunday 1st December at 7pm at St John's Presbyterian Church. St Mary of the Angels choir will join with St John's choir in leading the music for this service.

7 - 8 December, Bake Sale for Friends of Cathedral Music

Over the weekend of 7th and 8th December the Friends of Cathedral Music at The Cathedral of the Sacred Heart are holding a fundraiser bake sale. Christmas cakes are being raffled and baked goods for sale. Come and buy to help our cause. Thank you.

18 December, Carols with the Angels

All are invited to celebrate Carols with the Angels at the Salvation Army Citadel, 92 Vivian St at 7.30pm on Wednesday 18th December. The Salvation Army Band will join the St Mary of the Angels Choir, Young Angel Voices and the Korean Community Choir in an evening of joyful music.

3 - 12 January, Hearts Aflame Young Adults Catholic Summer Camp

Hearts Aflame is a ten day Catholic summer school that is open to young adults aged 18 to 35. Hearts Aflame 2014 will take place in Nga Tawa Diocesan School, Marton, from Friday 3rd January until Sunday 12th January 2014. The cost is \$495 per person which covers all meals, accommodation and scheduled activities. For more information or to register visit the website www.heartsaflame.org.nz

16 February, St Pius X Parish Titahi Bay Golden Jubilee

On Sunday 16 February 2014, St Pius X Parish Titahi Bay will be celebrating its 50 years as a Parish. This celebration will take the form of the Parish Mass at 9.30am followed by light refreshments and opportunity for present and past parishioners to mingle and chat in the Parish Hall. The occasion has certain poignancy as from February 2015 the Parish will be amalgamated with Tawa to form a new parish. A warm invitation is extended to all ex-parishioners and others with an association with St Pius X Parish to join us on this occasion. Registration is not required but it would be helpful to know who might be coming. Enquiries to Bob Cater ph: 236 7381 email: rubob@xtra.co.nz

Quality Te Aro Offices 5-7 Vivian Street, Wellington

Great location close to Cafe district
Busy arterial road
Air conditioned
Car parking available

Office suites available at an affordable price. Semi-serviced suites (approx 18sqm) that are fully furnished. There is also a company floor area (approx 200sqm) with 5x partitioned offices, Board room and Meeting room. Shared kitchen and shower facilities. Car parking available in the building at an additional rate.

This is a must see for new businesses on a budget. Earthquake Engineering Evaluation IEP Report NBS 80 %

Contact by e-mail for further information: mariabaldock@gmail.com

This newsletter is kindly sponsored by:
Michael Burrowes
of Burrowes and Company
Barristers and Solicitors
phone (04) 473 7733

**BURROWES
and Company**

Barristers and Solicitors

GLOBUS RELIGIOUS TRAVEL

Faith-based travel is the perfect way to build community. Explore the stories, follow in the footsteps of spiritual leaders and discover the roots of our faith.

For more information call **0800 Globus** or speak with *St Mary of the Angels* parishioner **Tracey Driscoll**, Area Sales Manager, Globus family of brands.

GLOBUS

Sistine Chapel, Vatican City

Please Support our Sponsors



Is dealing with a
**Locally Owned
Funeral Director**
important to you?



Wellington
56 Onepu Road, Kilbirnie
Telephone 387-8301
Email: harbour@funeral-link.co.nz
www.harbourcityfunerals.co.nz

WEST PLAZA HOTEL

LOCATION • COMFORT • STYLE

Weekend Special

\$125

One night's stay & cooked breakfast for two

Available Friday, Saturday and Sunday
Subject to availability

110 - 116 Wakefield Street, Wellington
p 0800 731 444

e reservations@westplaza.co.nz
book now westplaza.co.nz



Christian Supplies

www.christiansupplies.co.nz

- See our monthly newsletter in 'The Angelus'

- Freephone 0508 988 988 - Freefax 0508 988 989

email: order@pleroma.org.nz

The Angelus

St Mary of the Angels Parish

Church and Presbytery:

17 Boulcott Street,

Wellington Central

Telephone: 473 8074

Parish website: www.smoa.org.nz

St Mary of the Angels is a diverse community which seeks to praise and thank God in a place of calm and beauty and strives to be Christ alive in Central Wellington

Parish Priest

Fr Barry Scannell SM
smoapp@xtra.co.nz

Assistant Priest

Fr Tom O'Connor SM

Adult Education

Fr Michael Young SM

Pastoral Worker

Sr Frances Gibbs CSB

Director of Music

Robert Oliver
robert.oliver@paradise.net.nz

Parish Accountant

Jeanette Temelo
smoamanager@xtra.co.nz

Parish Office

smoaoffice@xtra.co.nz

MASSES

Sunday 7am, 9am, 11am, 5pm

Monday to Friday 7:30am, 12:05pm,
& 5:15pm

Saturday 11am

EACH MONTH

4th Saturday 11am Mass with
Sacrament of Anointing

ADORATION

Monday to Friday 6:45am-7:30am

Friday 11am-noon

RECONCILIATION

Monday to Thursday 11:30am-noon
12:30pm-1:00pm

Friday 11:00am-noon
12:30pm-1:00pm

Saturday 10:30am-11:00am
4:00pm-5:00pm

1st December 2013, 1st Sunday of Advent - Year A

Advent Carol Service

Please note the time change - now 7pm

Tonight at 7pm, St Mary of the Angels and St John's Presbyterian Church come together for a Carol Service led by the Choir's of the two congregations.

St John's has been so generous to us this year following the earthquakes in July and our sung Mass each Sunday has been celebrated in their Church. It is very important for us to show our appreciation and I hope that a large number of St Mary of the Angels parishioners attend this Carol Service. We need to thank the St John's community for their wonderful generosity and what better way to do that than to worship with them in preparation for Christmas.

Please show our appreciation by attending tonight's Carol Service at St John's Presbyterian Church (corner of Willis and Dixon Streets).

Handmade Carved Olive Wood Work from the Holy Land

Over the next few Sundays before Christmas a Palestinian Christian couple Ashraf and Tamara Qumseya, will be displaying handmade carved olive wood products from the Holy Land. They have come to Wellington from Betz a Hor near Bethlehem with their little daughter Tia to allow Tamara to take up a scholarship at Victoria University.

All of us know how difficult it is for Palestinian Christians in the Holy Land. Ashraf and Tamara are selling these olive wood products so that they can send the money back to their family and friends for Christmas.

The products are beautifully crafted by people who struggle for the basic necessities of life. If you purchase any of these gifts you are not only giving someone a lovely Christmas present but you are also helping Palestinian families close to where Jesus was born.

First Friday

This Friday, 7th December, is the first Friday of the month. There will be four Masses celebrated in the Parish Hall.

Mass times: 7.30am, 12.05pm, 1.05pm, 5.15pm

INVEST IN YOUR FAITH

CATHOLIC DEVELOPMENT FUND of WELLINGTON

This Week's Readings

First Reading	Is	2:1-5
<i>The Lord will gather all nations in eternal peace in the kingdom of God.</i>		
Second Reading	Rom	13:11-14
<i>The time has come, our salvation is near.</i>		
Gospel Reading	Matthew	24:37-44
<i>Stay awake, you must be ready.</i>		

Next Week's Readings

First Reading	Is	11:1-10
Psalm	71	
Second Reading	Rom	15:4-9
Gospel Reading	Matthew	3:1-12

Last Sunday's Collection

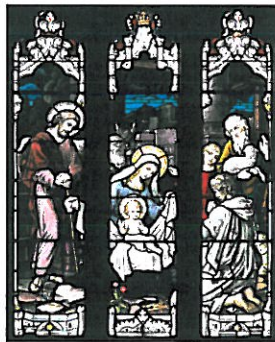
Total	\$4,038
Parish Expenses	\$2,867
Support of House	\$1,171



St Mary of the Angels Christmas Cards

St Mary of the Angels Christmas Cards are now available for purchase either after Mass on Sunday or from the Parish Office.

A6 \$15 for a pack of 12
DLE \$15 for a pack of 12



Adult Education in the Faith Ministry

The next meeting will be on Wednesday 4th December from 5.30pm - 7.30pm in the Presbytery Boardroom, above the Parish Hall. **Theme:** Types and schools of Spirituality II. **Session 2:** (IV) Non-Roman Catholic Christian Spiritualities: (2) Protestant Spiritualities (Part 1).

Mass has been offered for:

Recently Deceased:

Anniversaries: William Jenkins, Frances Haughey

Prayers for the Sick: Fr Craig Larkin sm, Philip Birch, Jeanette Parker, Paul Neazor, Jim Coyle, John Foden, Ann Ross, Reny Thomas, Barbara Ross, Helen Havasi, Mary Egan, Lisa Alo, Patricia Smyth, Maurice Yates, Maureen McDonald, Dulcie Campbell, Joanna Veltman, Losalia Leo, Kathleen Phelan.



Please remember in your prayers, these and the other sick of the Parish. If you know of anyone who is confined to their home or who needs a visit with Holy Communion, please contact Sister Frances at the Parish Office.

Responsorial Psalm 121

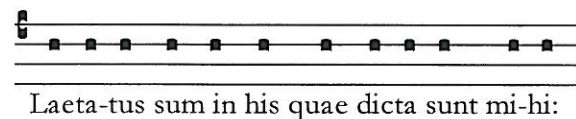
R. Let us go rejoicing to the house of the Lord.

I rejoiced when I heard them say:
'Let us go to God's house.'
And now our feet are standing
within your gates, O Jerusalem. **R**

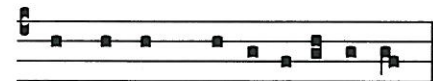
It is there that the tribes go up,
the tribes of the Lord.
For Israel's law it is,
there to praise the Lord's name.
There were set the thrones of judgement
of the house of David. **R**

For the peace of Jerusalem pray:
'Peace be to your homes!
May peace reign in your walls,
in your palaces, peace!'. **R**

For love of my brethren and friends
I say: 'Peace upon you!'
For the love of the house of the Lord
I will ask for your good. **R**



Laeta-tus sum in his quae dicta sunt mi-hi:



in domum Domi-ni i-bimus.

*I rejoiced at the things that were said to me:
we shall go into the house of the Lord.*

Reflection: Advent - 'Lock it in'

It seems unfashionably early to say, "Happy New Year", but as the Church's liturgical cycle turns from Ordinary Time to Advent, we find ourselves plunged quite suddenly into a new season. It shouldn't really surprise us, but for some reason, it always does. Advent occurs every year at this time and Christmas, now only four weeks' away, is firmly seared into our cultural consciousness socially, if not spiritually.

It will of course, be a different Advent experience for St Mary of the Angels' visitors and parishioners this year. We will be celebrating the liturgies of Advent, Christmas and Epiphany in a range of locations and we will be guests rather than hosts for some of our most familiar liturgical events; *Carols with the Angels* being one.

The insert in the Angelus this week offers some practical advice about spiritually preparing ourselves for Christmas. Barbara Reid OP reflects on beating swords into plough-shears and putting on an 'armour of light'. All very helpful, but sadly she offers very little advice about finding the perfect gift or even a car-park amidst a melee of Christmas shoppers. These latter tasks regrettably, are highly likely to occupy our thinking as we count down to Christmas Eve, and it would be a mistake to let the next few weeks slip by without at least some attempt to mentally prepare for an onslaught.

If you think all this sounds as though we are preparing ourselves for some ritual combat, you could be right. I recall with clarity attempting to board a train some years ago in London, during what would be the last shopping day before Christmas. Suffice to say, crowded trains arrived and left again with practically no one being able to alight or board – such was the density of people on the train and the platform. After several such trains had arrived and departed, the mood of the crowd had built to a dangerous hostility. Just at the moment when it seemed serious injury, or worse, was inevitable, an exasperated voice was heard to say, "That child has a lot to answer for!"

In an instant, the hostility cracked into laughter and it seemed as though a light had been switched on. People relaxed; some cheerfully, some less so, but the anger was gone. Eventually more trains arrived and departed, and I suspect everyone on the platform that afternoon found some safe place to celebrate Christmas.

'That Child', indeed.



HOPE

Suzanne O'Rourke, Liturgy Committee

SMAYACs Prayer Group

All young adults and the young at heart are invited to a time of prayer, reading and reflection, Thursday at 6pm in the Parish Hall.

Advent Reflection Group

All are invited to join the Scripture Reflection Group who meet on Monday evenings throughout Advent. We read and reflect on the following Sundays readings for Advent & Christmas, and discuss how we can carry these messages into our lives. The first meeting will be on Monday 25th November, 6pm-7pm. in the Presbytery Boardroom. Enquiries: Neil Coup, Ph: 021 896 924

Advent Mediations

On Fridays immediately after midday Mass there will be a 20 minute mediation on Advent, with prayers and chant, led by members of the choir. The Great 'O' Antiphons, the prophet Isaiah's foretelling of the coming of Christ, will be sung by the choir.

Catholic Social Services Christmas Gift Appeal

Catholic Social Services need donations of small Christmas gifts for children and adults to help make Christmas a special time for families in need.

Gifts can be left in the basket at the back of the Church or delivered to 152 Brougham St. Gifts can also be arranged to be collected by calling 385 8642 or email

v.chiu@wncatholicsocialservices.org.nz

If you wrap the gift please indicate on the outside of the wrapping what it is and which age it may suit.

The final date for collection is Friday 13 December 2013.

Thank you for your support.

LT McGuinness LIMITED
BUILDING CONTRACTORS
9 Francis Place,
PO Box 9639, Wellington
Phone (04) 384 8455 Fax (04) 801 8455
Email: ltm@mcguinness.co.nz

Little Peckish Cafe
Feeling a little peckish?
Dukes Arcade · Great food, coffee, service
Office catering available
Phone 499 7769 · Mobile 0274 461 650

NEW WORLD WELLINGTON CITY
279 WAKEFIELD ST.
OPEN 7 DAYS | 7AM - MIDNIGHT
WWW.WGTNCITYNEWWORLD.CO.NZ

CDF
Catholic Development Fund of Wellington

Save with the CDF and you'll be helping the needy; each year all of CDF's operating surplus goes to the Archdiocese for social caring and pastoral services.

Saving with us helps your Archdiocese.
Call 0800 4 233 233 or visit www.cdf.co.nz

