

For Your Diaries : 2013

14 November, Healing Meeting with Bill Subritzky

A Healing Meeting with Bill Subritzky will be held at Sacred Heart Cathedral, Hill Street, Wellington on Thursday, 14 November commencing at 7.00pm. All welcome.

23 November, St Mary of the Angels Parish Quiz Night

All parishioners, friends and families are invited to attend the St Mary of the Angels Parish Quiz Night, organised by the Parish Council, on Saturday 23rd November from 6.30pm - 10pm in Connolly Hall.

28 November, Healing Services with Fr John Rea sm

There will be a healing service with Father John at Our Lady of Fatima Church, 29 Parata Street, Waikanae on Thursday 28th November at 7.30pm. It will be a service (not a Mass); an opportunity for people to come together for collective and personal prayer. Everyone is welcome.

1 December, Advent Carol Service

All are invited to the St Mary of the Angels and St John's Presbyterian Church combined Advent Carols Service on Sunday 1st December at 7.30pm at St John's Presbyterian Church. St Mary of the Angels choir will join with St John's choir in leading the music for this service.

18 December, Carols with the Angels

All are invited to celebrate Carols with the Angels at the Salvation Army Citadel, 92 Vivian St at 7.30pm on Wednesday 18th December. The Salvation Army Band will join the St Mary of the Angels Choir, Young Angel Voices and the Korean Community Choir in and evening of joyful music.

3 - 12 January, Hearts Aflame Young Adults Catholic Summer Camp

Hearts Aflame is a ten day Catholic summer school that is open to young adults aged 18 to 35. Hearts Aflame 2014 will take place in Nga Tawa Diocesan School, Marton, from Friday 3rd January until Sunday 12th January 2014. The cost is \$495 per person which covers all meals, accommodation and scheduled activities. For more information or to register visit the website www.heartsaflame.org.nz

Traditional Latin Mass will be celebrated each Sunday at 12.30pm at Pa Maria, 78 Hobson Street, Thorndon. Enquiries: Neil Coup 021896924.

Quality Te Aro Offices

5-7 Vivian Street, Wellington

Great location close to Cafe district
Busy arterial road
Air conditioned
Car parking available

Office suites available at an affordable price. Semi-serviced suites (approx 18sqm) that are fully furnished. There is also a company floor area (approx 200sqm) with 5x partitioned offices, Board room and Meeting room. Shared kitchen and shower facilities. Car parking available in the building at an additional rate.

This is a must see for new businesses on a budget. Earthquake Engineering Evaluation IEP Report NBS 80 %

Contact by e-mail for further information: mariabaldock@gmail.com

This newsletter is kindly sponsored by:
Michael Burrowes
of Burrowes and Company
Barristers and Solicitors
phone (04) 473 7733

BURROWES
and Company

Barristers and Solicitors

Please Support our Sponsors



Is dealing with a
**Locally Owned
Funeral Director**
important to you?



Wellington
56 Onepu Road, Kilbirnie
Telephone 387-8301
Email: harbour@funeral-link.co.nz
www.harbourcityfunerals.co.nz

WEST PLAZA HOTEL

LOCATION • COMFORT • STYLE

Weekend Special

\$125

One night's stay & cooked breakfast for two
Available Friday, Saturday and Sunday
Subject to availability

110 - 116 Wakefield Street, Wellington
p 0800 731 444
e reservations@westplaza.co.nz
book now westplaza.co.nz



Christian Supplies

www.christiansupplies.co.nz

- See our monthly newsletter in 'The Angelus'
- Freephone 0508 988 988 - Freefax 0508 988 989
email: order@pleroma.org.nz

GLOBUS RELIGIOUS TRAVEL

GLOBUS

Faith-based travel is the perfect way to build community. Explore the stories, follow in the footsteps of spiritual leaders and discover the roots of our faith.

For more information call **0800 Globus** or speak with St Mary of the Angels parishioner **Tracey Driscoll**, Area Sales Manager, Globus family of brands.

Sistine Chapel, Vatican City

The Angelus

St Mary of the Angels Parish

Church and Presbytery:

**17 Boulcott Street,
Wellington Central**
Telephone: 473 8074
Parish website: www.smoa.org.nz

St Mary of the Angels is a diverse community which seeks to praise and thank God in a place of calm and beauty and strives to be Christ alive in Central Wellington

Parish Priest

Fr Barry Scannell SM
smoapp@xtra.co.nz

Assistant Priest

Fr Tom O'Connor SM

Adult Education

Fr Michael Young SM

Pastoral Worker

Sr Frances Gibbs CSB

Director of Music

Robert Oliver
robert.oliver@paradise.net.nz

Parish Accountant

Jeanette Temelo
smoamanager@xtra.co.nz

Parish Office

smoaoffice@xtra.co.nz

MASSES

Sunday 7am, 9am, 11am, 5pm

Monday to Friday 7:30am, 12:05pm, & 5:15pm

Saturday 11am

EACH MONTH

4th Saturday 11am Mass with Sacrament of Anointing

ADORATION

Monday to Friday 6:45am-7:30am

Friday 11am-noon

RECONCILIATION

Monday to Thursday 11:30am-noon
12:30pm-1:00pm
4:30pm-5:00pm

Friday 11:00am-noon
12:30pm-1:00pm
4:30pm-5:00pm

Saturday 10:30am-11:00am
4:00pm-5:00pm

10th November 2013, 32nd Sunday Ordinary Time Year C

Month of the Holy Souls

During the month of November we pray at every Mass for the Holy Souls. There is a box in front of the altar to place names in or a Remembrance book on the table at the back of the Church.

Mass Intentions

If you would like a special Mass celebrated for those who have died please write the name of the person(s) on the envelope provided on the table at the entrance to the Hall/Chapel, place a Mass stipend inside and either give it to one of the priests or Sister Frances or hand it into the Parish Office.

Faith on Foot

To close the Year of Faith Archbishop John is going on a pilgrimage to each Pastoral Area and the four corners of the Diocese from 17th - 24th November.

On the afternoon of Saturday 23rd November the Wellington Central Pastoral Area pilgrimage is scheduled for 3pm. This event will begin with a 30 minute walk from Karori Cemetery to St Thomas More Church, Wilton, arriving at the Church at approximately 3.40pm. A liturgy will be celebrated which will include the presentation of the Fitzgerald award, followed by a time of hospitality in the lounge.

Everyone is invited to this special occasion and to participate in as much or little as you are able. For those unable to walk you can drive to the stopping places on the pilgrimage or just be at the Church to welcome the arrival of the pilgrims.

A map and more details will follow in next week's newsletter. For the full Pilgrimage schedule visit - www.wn.catholic.org.nz/year-of-faith/calendar

Please consider joining others in our Pastoral Area to conclude the 'Year of Faith'.

Fr Barry Scannell sm
Parish Priest

INVEST IN YOUR FAITH

CATHOLIC DEVELOPMENT FUND of WELLINGTON

This Week's Readings

First Reading 2 Macc 7:1-2, 9-14
The king of the world will receive us into life eternal at the resurrection.

Second Reading 2 Thess 2:16-3:5
May the Lord strengthen you in everything good that you do or say.

Gospel Reading Luke 20:27-38
He is not a God of the dead but of the living.

Next Week's Readings

First Reading Mal 3:19-20
Psalm 97
Second Reading 2 Thess 3:7-12
Gospel Reading Luke 21:5-19

Last Sunday's Collection

Total	\$4,199
Parish Expenses	\$2,981
Support of House	\$1,218



Adult Education in the Faith Ministry

The next meeting will be on Wednesday 13th November from 5.30pm - 7.30pm in the Presbytery Boardroom, above the Parish Hall.

Theme: Types and schools of Spirituality II.

Session 1: Introduction and (III) Trends in Contemporary Spirituality: (1) Holistic Spirituality (2) Mission and Ministry.

The two year level one spirituality course, 'An Introduction to Christian Spirituality' will begin again next year (2014). The sessions will be held each Thursday from 7.30pm - 9.30pm at Pa Maria, Thorndon. If you wish to participate in this course please contact Father Michael Young sm. 473 8074 or smoaoffice@xtra.co.nz

Mass has been offered for:

Recently Deceased: Midge Moore

Anniversaries: Joan Welch, Leigh McGuinness, Paul Churchward, Peter O'Meehan, Leslius Thomas Jones, Marion Hyland, Denise Sutich

Prayers for the Sick: John Foden, Reny Thomas, Barbara Ross, Ann Ross, Helen Havasi, Mary Egan, Kathleen Phelan, Patricia Smyth, Maurice Yates, Maureen McDonald, Dulcie Campbell, Joanna Veltman, Losalia Leo, Lisa Alo.



Please remember in your prayers, these and the other sick of the Parish. If you know of anyone who is confined to their home or who needs a visit with Holy Communion, please contact Sister Frances at the Parish Office.

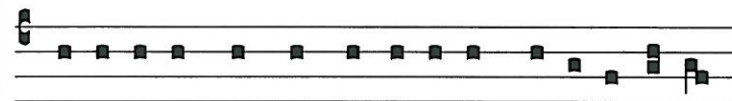
Responsorial Psalm 16

R. Lord, when your glory appears, my joy will be full.

Lord, hear a cause that is just,
 pay heed to my cry.
 Turn your ear to my prayer:
 no deceit is on my lips. **R**

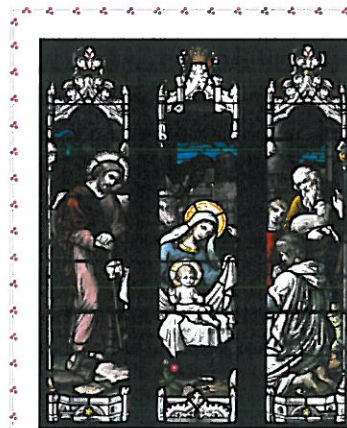
I kept my feet firmly in your paths;
 there was no faltering in my steps.
 I am here and I call, you will hear me, O God.
 Turn your ear to me; hear my words. **R**

Guard me as the apple of your eye.
 Hide me in the shadow of your wings.
 As for me, in my justice I shall see your face
 and be filled, when I awake,
 with the sight of your glory. **R**



Sa-ti- abor cum appa-ru- e-rit glo-ri- a tu- a.

I shall be satisfied when thy glory shall appear.



St Mary of the Angels Christmas Cards

St Mary of the Angels Christmas Cards are now available for purchase either after Mass on Sunday or from the Parish Office.

A6 - \$15 for a pack of 12,
 DLE - \$15 for a pack of 12,
 A5 - \$1.50 each

Closure of Church: Effects

The closing of the Church on 21 July following the earthquakes earlier that day has affected our Parish community in many ways. We now worship in four different places each Sunday. We have been very fortunate that the Cathedral Parish, St Joseph's in Mt Victoria and St John's



Presbyterian Church have been so generous in accommodating us for our Sunday Masses. However, as well as the sadness of not being able to worship in our beautiful Church there are some other very sobering realities associated with the closing of St Mary of the Angels Church.

There has been a dramatic 'drop-off' in numbers attending Sunday Mass. During the month of November each year the Archdiocese takes a Mass count of each Parish. Last Sunday (the first Sunday of the count for this year) 455 people attended our Sunday Masses. The average for November 2012 was 618. This means that there are approximately 163 less people attending Mass this year at St Mary of the Angels. This has significant pastoral and financial implications.

The closing of the Church also affected many young couples who had booked the Church for their weddings. There were 21 weddings scheduled and the young couples involved had to find an alternative venue. This resulted in a substantial loss of income for the Parish as couples always pay a significant donation for the use of the Church for their wedding.

Many parishioners and members of the public came to our Church to pray and to light candles for their loved ones. The votive candle stands in front of the altars of Our Lady and St Joseph were always glowing with candles so the closing of the Church has resulted in a significant loss of income from Votive Candles.

The Parish Finance Committee have been closely monitoring the financial impact following the closure of the Church. They estimate that this financial year (ending 31 March 2014) income will reduce by approximately \$60,000. During the first six months (April to September 2013) expenditure exceeded income by \$10,000.

The closing of the Church has affected our Parish in many ways. We pray that we can continue to manage the spiritual and material challenges that we face until the Church is strengthened and re-opened.

Father Barry Scannell sm, Parish Priest

SMAYACs Prayer Group

All young adults and the young at heart are invited to a time of reflection, prayer and readings, Thursday at 6pm in Parish Hall. This Thursday, 14th November, after 6pm Prayer Group, SMAYACs will form a team for the Quiz at The Grand on Courtenay Place (8pm Start). All are most welcome to join. Contact Bridget for more information: 021 473 397 or smayacs@gmail.com.

St Mary of the Angels Choir

The St Mary of the Angels Choir (who sing at 12pm Mass on Sunday) is seeking new members. If you would like to join the choir please contact the Director of Music, Robert Oliver: robert.oliver@paradise.net.nz or approach a choir member after Mass. There is no audition.

Columban Calendars

2014 Columban Calendars are now available for purchase from the St Mary of the Angels Parish Office for \$10 each.

PARISH QUIZ NIGHT

All parishioners, friends and families are invited to attend the St Mary of the Angels Parish Quiz Night, organised by the Parish Council, on Saturday 23rd November from 6.30pm - 10pm in Connolly Hall.

This is an opportunity to get together for an evening of community and friendly competition, amidst the disruption of closing of the Church for seismic strengthening. The quiz will begin at 7pm. Put together a team or just turn up on the night. Please bring a plate of food and drink to share for supper.

LT McGuinness LIMITED
 BUILDING CONTRACTORS
 9 Francis Place,
 PO Box 9639, Wellington
 Phone (04) 384 8455 Fax (04) 801 8455
 Email: ltm@mcguinness.co.nz

Little Peckish Cafe
 Feeling a little peckish?
 Dukes Arcade • Great food, coffee, service
 Office catering available
 Phone 499 7769 • Mobile 0274 461 650

NEW WORLD WELLINGTON CITY
 279 WAKEFIELD ST.
 OPEN 7 DAYS | 7AM - MIDNIGHT
 WWW.WGTNCITYNEWWORLD.CO.NZ

CDF
 Catholic Development Fund of Wellington

Save with the CDF and you'll be helping the needy; each year all of CDF's operating surplus goes to the Archdiocese for social caring and pastoral services.

Saving with us helps your Archdiocese.
 Call 0800 4 233 233 or visit www.cdf.co.nz

