

## For Your Diaries : 2013

### 3 & 28 November, Healing Services with Fr John Rea sm

Karori Combined Churches are hosting a healing service with Fr John Rea sm to be held at St Teresa's Church, 301 Karori Road, on Sunday 3rd November 2013 commencing at 7:30pm. All welcome. There will be a second healing service with Father John at Our Lady of Fatima Church, 29 Parata Street, Waikanae on Thursday 28th November commencing at 7.30pm. It will be a service (not a Mass); an opportunity for people to come together for collective and personal prayer. It is open to everyone.

### 6 November, Cathedral Seasonal Forum - Joy Cowley

All are invited to the final Cathedral Seasonal Forum on Wednesday 6th November at 7.30pm in Connolly Hall, Guilford Tce. Joy Cowley will speak on 'Psalms, our communication with God'. Supper served afterwards and everyone is welcome.

### 7 November, St Mary of the Angels Mass of Remembrance

All are invited to the St Mary of the Angels Parish annual Mass of Remembrance on Thurs 7th November 5.15pm in Parish Hall.

### 10 November, Catholic Deaf Community Mass

The Catholic Deaf Community invites all deaf to join them for the 9.30am Mass at St Peter and Paul's Church, 60 Knights Road, Lower Hutt on Sunday 10 November. A NZSL interpreter will be present.

### 14 November, Healing Meeting with Bill Subritzky

A Healing Meeting with Bill Subritzky will be held at Sacred Heart Cathedral, Hill Street, Wellington on Thursday, 14 November commencing at 7.00pm. All welcome.

### 23 November, St Mary of the Angels Parish Quiz Night

All parishioners, friends and families are invited to attend the St Mary of the Angels Parish Quiz Night, organised by the Parish Council, on Saturday 23rd November from 6.30pm - 10pm in Connolly Hall.

### 3 - 12 January, Hearts Aflame Young Adults Catholic Summer Camp

Hearts Aflame is a ten day Catholic summer school that is open to young adults aged 18 to 35. Hearts Aflame 2014 will take place in Nga Tawa Diocesan School, Marton, from Friday 3rd January until Sunday 12th January 2014. The cost is \$495 per person which covers all meals, accommodation and scheduled activities. For more information or to register visit the website [www.heartsaflame.org.nz](http://www.heartsaflame.org.nz)

## Quality Te Aro Offices

5-7 Vivian Street, Wellington

Great location close to Cafe district  
Busy arterial road  
Air conditioned  
Car parking available

Office suites available at an affordable price. Semi-serviced suites (approx 18sqm) that are fully furnished. There is also a company floor area (approx 200sqm) with 5x partitioned offices, Board room and Meeting room. Shared kitchen and shower facilities. Car parking available in the building at an additional rate.

This is a must see for new businesses on a budget. Earthquake Engineering Evaluation IEP Report NBS 80 %

Contact by e-mail for further information: [mariabaldock@gmail.com](mailto:mariabaldock@gmail.com)

This newsletter is kindly sponsored by:  
Michael Burrowes  
of Burrowes and Company  
Barristers and Solicitors  
phone (04) 473 7733

**BURROWES**  
and Company

Barristers and Solicitors

## GLOBUS RELIGIOUS TRAVEL

Faith-based travel is the perfect way to build community. Explore the stories, follow in the footsteps of spiritual leaders and discover the roots of our faith.

For more information call **0800 Globus** or speak with *St Mary of the Angels* parishioner **Tracey Driscoll**, Area Sales Manager, Globus family of brands.

**GLOBUS**

Sistine Chapel, Vatican City

## Please Support our Sponsors



Locally Owned Funeral Directors  
Caring in our Community

Is dealing with a  
**Locally Owned  
Funeral Director**  
important to you?



Wellington  
56 Onepu Road, Kilbirnie  
Telephone 387-8301

Email: [harbour@funeral-link.co.nz](mailto:harbour@funeral-link.co.nz)  
[www.harbourcityfunerals.co.nz](http://www.harbourcityfunerals.co.nz)

## WEST PLAZA HOTEL

LOCATION • COMFORT • STYLE

### Weekend Special

**\$125**

One night's stay & cooked breakfast for two

Available Friday, Saturday and Sunday  
Subject to availability

110 - 116 Wakefield Street, Wellington  
p 0800 731 444

e [reservations@westplaza.co.nz](mailto:reservations@westplaza.co.nz)  
book now [westplaza.co.nz](http://westplaza.co.nz)



**Christian Supplies**

[www.christiansupplies.co.nz](http://www.christiansupplies.co.nz)

- See our monthly newsletter in 'The Angelus'  
- Freephone 0508 988 988 - Freefax 0508 988 989  
email: [order@pleroma.org.nz](mailto:order@pleroma.org.nz)

# The Angelus

St Mary of the Angels Parish

### Church and Presbytery:

17 Boulcott Street,  
Wellington Central

Telephone: 473 8074

Parish website: [www.smoa.org.nz](http://www.smoa.org.nz)

*St Mary of the Angels is a diverse community which seeks to praise and thank God in a place of calm and beauty and strives to be Christ alive in Central Wellington*

### Parish Priest

Fr Barry Scannell SM  
[smoapp@xtra.co.nz](mailto:smoapp@xtra.co.nz)

### Assistant Priest

Fr Tom O'Connor SM

### Adult Education

Fr Michael Young SM

### Pastoral Worker

Sr Frances Gibbs CSB

### Director of Music

Robert Oliver  
[robert.oliver@paradise.net.nz](mailto:robert.oliver@paradise.net.nz)

### Parish Accountant

Jeanette Temelo  
[smoamanager@xtra.co.nz](mailto:smoamanager@xtra.co.nz)

### Parish Office

[smoaoffice@xtra.co.nz](mailto:smoaoffice@xtra.co.nz)

### MASSES

Sunday 7am, 9am, 11am, 5pm

Monday to Friday 7:30am, 12:05pm,  
& 5:15pm

Saturday 11am

### EACH MONTH

4th Saturday 11am Mass with  
Sacrament of Anointing

### ADORATION

Monday to Friday 6:45am-7:30am

Friday 11am-noon

### RECONCILIATION

Monday to Thursday 11:30am-noon  
12:30pm-1:00pm  
4:30pm-5:00pm

Friday 11:00am-noon  
12:30pm-1:00pm  
4:30pm-5:00pm

Saturday 10:30am-11:00am  
4:00pm-5:00pm

## 3rd November 2013, 31st Sunday Ordinary Time Year C

### Reimagining the Archdiocese

On Thursday last week Archbishop John promulgated a document called: **"A future full of Hope" – Reimagining the Archdiocese of Wellington.** This document is the result of many months of prayer, discussion and suggestions by many groups and individuals in Parishes throughout the Archdiocese. It has been obvious for quite some time that we could not continue to maintain all the Parishes we currently have and Archbishop John asked the people of the Archdiocese to respond to his proposal to reduce the number of Parishes by having two, three or four parishes combine as one.

You can view the results of this consultation process on the website [www.wn.catholic.org.nz](http://www.wn.catholic.org.nz). The document is also published in this month's Wel-Com which is available this weekend.

St Mary of the Angels Parish and Sacred Heart Cathedral Parish are to remain as stand-alone parishes.

### Memorial Mass for Deceased Parishioners & Family Members

Each year the Parish celebrates Mass for deceased parishioners and family members of parishioners who have died during the past year. This Mass will be celebrated this Thursday 7 November at 5.15pm followed by a light supper.

I hope many parishioners and friends will come to pray for those loved ones who have gone before us **'marked with the sign of faith'**. It would be appreciated, for catering purposes, if you could let the Parish Office know if you are coming.

### Month of the Holy Souls

During the month of November we have a Remembrance Book for the Holy Souls and you can write the names of any Holy Souls in the book and they will be prayed for at every Mass celebrated in our Chapel during November. The book is on a small table in the Chapel.

If you would like a special Mass Intention for those who have died please write the name of the person(s) on the envelope provided on the table at the entrance to the Hall/Chapel, place a Mass stipend inside and either give it to one of the priests or Sister Frances or hand it into the Parish Office.

*Fr Barry Scannell sm, Parish Priest*

# INVEST IN YOUR FAITH

CATHOLIC DEVELOPMENT FUND of WELLINGTON



## This Week's Readings

**First Reading** Wis 11:22 - 12:2

*You have mercy on all things because you love everything that exists.*

**Second Reading** 2 Thess 1:11 - 2:2

*The name of our Lord Jesus Christ will be glorified in you and you in him.*

**Gospel Reading** Luke 19:1-10

*The Son of Man came to seek and to find that which was lost.*

## Next Week's Readings

**First Reading** 2 Macc 7:1-2, 9-14

**Psalm** 16

**Second Reading** 2 Thess 2:16-3:5

**Gospel Reading** Luke 20:27-38

## Last Sunday's Collection

Total \$3,896

Parish Expenses \$2,766

Support of House \$1,130



## Adult Education in the Faith Ministry

The next meeting will be on Wednesday 6th November from 5.30pm - 7.30pm in the Presbytery Boardroom, above the Parish Hall.

**Theme:** Types and schools of Spirituality 1.

**Session 5:** (II) Apostolic Spirituality - (3) Ignatian Spirituality, (4) The French School of Spirituality, (5) Salesian Spirituality.

The two year level one spirituality course, 'An Introduction to Christian Spirituality' will begin again next year (2014). The sessions will be held each Thursday from 7.30pm - 9.30pm at Pa Maria, Thorndon. If you wish to participate in this course please contact Father Michael Young sm. 473 8074 or smoaoffice@extra.co.nz

## Mass has been offered for:

### Recently Deceased:

**Anniversaries:** Stephen Reidy, Paul Churchward, Leslie Jones, Leigh McGuinness

**Prayers for the Sick:** John Foden, Reny Thomas, Barbara Ross, Ann Ross, Helen Havasi, Mary Egan, Kathleen Phelan, Patricia Smyth, Maurice Yates, Maureen McDonald, Dulcie Campbell, Joanna Veltman, Losalia Leo, Lisa Alo.



*Please remember in your prayers, these and the other sick of the Parish. If you know of anyone who is confined to their home or who needs a visit with Holy Communion, please contact Sister Frances at the Parish Office.*

## Responsorial Psalm 144

**R. I will praise your name for ever, my king and my God.**

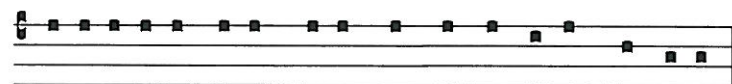
I will give you glory, O God my King,  
I will bless your name for ever.

I will bless you day after day  
and praise your name for ever. **R**

The Lord is kind and full of compassion,  
slow to anger, abounding in love.  
How good is the Lord to all,  
compassionate to all his creatures. **R**

All your creatures shall thank you, O Lord,  
and your friends shall repeat their blessing.  
They shall speak of the glory of your reign  
and declare your might, O God. **R**

The Lord is faithful in all his words  
and loving in all his deeds.  
The Lord supports all who fall  
and raises all who are bowed down. **R**



Exaltabo te De-us me-us Rex, in saecu-lum saecu-li.

*I will extol thee O God my King, for ever and ever.*

## Catholic Discipleship College

The Catholic Discipleship College is seeking a Household & Formation Leader who will live in as part of our small community of students at the Catholic Discipleship College in Auckland for 2014. Strong faith, leadership and communication skills essential. Contact Myriam Heynen on 021 920 414 or mheyne@ihug.co.nz for more information and a position description by Monday 4 November. [www.cdc.ac.nz](http://www.cdc.ac.nz)

## Reflection: Prayers and Remembrance

Among the many riches the world offers those who travel, the public memorials and expressions of cultural history in Jerusalem truly stand out.

The poignant simplicity of exhibits at Yad Vashem, the Holocaust Museum, connects deeply with all who have the opportunity to visit.



*The Family and Children's Memorial, Yad Vashem*

For some it's the idea of a world torn apart by power and madness that people find so disturbing. For others, it's the calculated disposal of human lives and the industrial scale of everything. For many though, it is the reality of being there, of being a witness to the lives and deaths of others that leaves people changed. Simply by visiting the place where so many ordinary people are remembered, is a deeply affecting honour.

Our Christian faith has deep roots in the Jewish tradition of memorial. Just as the Exodus is faithfully recalled in Jewish households each Passover, the Resurrection of Christ is made present in the celebration of every Mass. It's an extraordinary thing, an inexplicable grace that simply by being there, we should be participants, honoured guests.

It's amazing too, to consider that our every living breath connects the future with the past.

This idea of our lives being part of all eternity is worth considering. In November we remember in particular, the Holy Souls; those who have gone from this world, held in God's love for all eternity. It's an honour to think of them, and we pray for those who have died, as easily and as surely as we pray blessings on our friends and family who are alive today.

This year the 5.15pm Mass on Thursday 7 November is the annual St Mary of the Angels Mass of Remembrance. It will be held in the Parish Hall Chapel rather than the Church but in all other respects it will be the same. All those who have died and been buried from St Mary's will be remembered, and prayers offered for their families and loved ones. Likewise, those of our Parish Community who have died and been buried from other Churches.

We may be temporarily bereft of our beautiful Church building, but we carry a great truth; wherever we gather for Eucharist, we have a sacred and eternal space between us. We truly stand on holy ground.

*Suzanne O'Rourke, Liturgy Committee*

## SMAYACs Holy Hour

All young adults and the young at heart are invited to a Holy hour of adoration, prayer and reflection in the Parish Hall this Thursday, 7th November.

## Columban Calendars

2014 Columban Calendars are now available for purchase from the St Mary of the Angels Parish Office for \$10 each.

## Faith on Foot

To complete the Year of Faith, Archbishop John Dew is going on a pilgrimage to each Pastoral Area and the four corners of the Diocese from 17 - 24 November.

The Wellington Central Pastoral Area pilgrimage is scheduled for 3pm on Saturday 23 November. The pilgrimage will begin with a 30 minute walk from Karori Cemetery to St Thomas More Church, Wilton. A liturgy will be celebrated at St Thomas More Church, followed by a time of hospitality. Everyone is invited to this special occasion.

## PARISH QUIZ NIGHT

All parishioners, friends and families are invited to attend the St Mary of the Angels Parish Quiz Night, organised by the Parish Council, on Saturday 23rd November from 6.30pm - 10pm in Connolly Hall.

This is an opportunity to get together for an evening of community and friendly competition, amidst the disruption of closing of the Church for seismic strengthening.

The quiz will begin at 7pm. Put together a team or just turn up on the night. Please bring a plate of food and drink to share for supper.

**LT McGuinness**  
BUILDING CONTRACTORS LIMITED  
9 Francis Place,  
PO Box 9639, Wellington  
Phone (04) 384 8455 Fax (04) 801 8455  
Email: [ltm@mcguinness.co.nz](mailto:ltm@mcguinness.co.nz)

**Little Peckish**  
Café  
Feeling a little peckish?  
Dukes Arcade · Great food, coffee, service  
Office catering available  
Phone 499 7769 · Mobile 0274 461 650

**NEW WORLD**  
WELLINGTON CITY  
279 WAKEFIELD ST.  
OPEN 7 DAYS | 7AM - MIDNIGHT  
[WWW.WGTNCITYNEWWORLD.CO.NZ](http://WWW.WGTNCITYNEWWORLD.CO.NZ)

**CDF**  
Catholic Development Fund of Wellington

Save with the CDF and you'll be helping the needy; each year all of CDF's operating surplus goes to the Archdiocese for social caring and pastoral services.

Saving with us helps your Archdiocese.  
Call 0800 4 233 233 or visit [www.cdf.co.nz](http://www.cdf.co.nz)

