

For Your Diaries : 2013

1 November, Vespers for All Saints

All are invited to celebrate Vespers for All Saints at St Joseph's Church, Mt Victoria on Friday 1st November at 7.30pm.

1-3 November 2013, Rachel's Vineyard Retreats

A Retreat weekend for those whose lives have been touched by abortion. Information and support is available for men and women. All enquiries are strictly confidential. Contact Wendy Hill on 027 254 9222 or email info@rachelsvineyard.org.nz or visit www.rachelsvineyard.org.nz

2 November, Stewardship Day with Archbishop John Dew

Archbishop John Dew invites you to a Stewardship "How To" day at 9.30am on Saturday 2nd November at St Joseph's Church, Mt Victoria. RSVP to Ann Williams 496 1777 or a.williams@wn.catholic.org.nz

3 & 28 November, Healing Services with Fr John Rea sm

Karori Combined Churches are hosting a healing service with Fr John Rea sm to be held at St Teresa's Church, 301 Karori Road, on Sunday 3rd November 2013 commencing at 7.30pm. All welcome. There will be a second healing service with Father John at Our Lady of Fatima Church, 29 Parata Street, Waikanae on Thursday 28th November commencing at 7.30pm. It will be a service (not a Mass); an opportunity for people to come together for collective and personal prayer. It is open to everyone.

6 November, Cathedral Seasonal Forum - Joy Cowley

All are invited to the final Cathedral Seasonal Forum on Wednesday 6th November at 7.30pm in Connolly Hall, Guilford Tce. Joy Cowley will speak on 'Psalms, our communication with God'. Supper served afterwards and everyone is welcome.

23 November, St Mary of the Angels Parish Quiz Night

All parishioners, friends and families are invited to attend the St Mary of the Angels Parish Quiz Night, organised by the Parish Council, on Saturday 23rd November from 6.30pm - 10pm in Connolly Hall.

3 - 12 January, Hearts Aflame Young Adults Catholic Summer Camp

Hearts Aflame is a ten day Catholic summer school that is open to young adults aged 18 to 35. Hearts Aflame 2014 will take place in Nga Tawa Diocesan School, Marton, from Friday 3rd January until Sunday 12th January 2014. The cost is \$495 per person which covers all meals, accommodation and scheduled activities. For more information or to register visit the website www.heartsaflame.org.nz

Quality Te Aro Offices 5-7 Vivian Street, Wellington

Great location close to Cafe district
Busy arterial road
Air conditioned
Car parking available

Office suites available at an affordable price. Semi-serviced suites (approx 18sqm) that are fully furnished. There is also a company floor area (approx 200sqm) with 5x partitioned offices, Board room and Meeting room. Shared kitchen and shower facilities. Car parking available in the building at an additional rate.

This is a must see for new businesses on a budget. Earthquake Engineering Evaluation IEP Report NBS 80 %

Contact by e-mail for further information: mariabaldock@gmail.com

This newsletter is kindly sponsored by:
Michael Burrowes
of Burrowes and Company
Barristers and Solicitors
phone (04) 473 7733

BURROWES
and Company

Barristers and Solicitors

GLOBUS RELIGIOUS TRAVEL

Faith-based travel is the perfect way to build community. Explore the stories, follow in the footsteps of spiritual leaders and discover the roots of our faith.

For more information call **0800 Globus** or speak with **St Mary of the Angels** parishioner **Tracey Driscoll**, Area Sales Manager, Globus family of brands.

GLOBUS

Sistine Chapel, Vatican City

Please Support our Sponsors



Is dealing with a
**Locally Owned
Funeral Director**
important to you?



Wellington
56 Onepu Road, Kilbirnie
Telephone **387-8301**
Email: harbour@funeral-link.co.nz
www.harbourcityfunerals.co.nz

WEST PLAZA HOTEL

LOCATION • COMFORT • STYLE

**Weekend Special
\$125**

One night's stay & cooked breakfast for two

Available Friday, Saturday and Sunday
Subject to availability

110 - 116 Wakefield Street, Wellington
p 0800 731 444

e reservations@westplaza.co.nz
book now westplaza.co.nz



Christian Supplies

www.christiansupplies.co.nz

- See our monthly newsletter in 'The Angelus'
- Freephone 0508 988 988 - Freefax 0508 988 989
email: order@pleroma.org.nz

The Angelus

St Mary of the Angels Parish

Church and Presbytery:

**17 Boulcott Street,
Wellington Central**

Telephone: 473 8074

Parish website: www.smoa.org.nz

St Mary of the Angels is a diverse community which seeks to praise and thank God in a place of calm and beauty and strives to be Christ alive in Central Wellington

Parish Priest

Fr Barry Scannell SM
smoapp@xtra.co.nz

Assistant Priest

Fr Tom O'Connor SM

Adult Education

Fr Michael Young SM

Pastoral Worker

Sr Frances Gibbs CSB

Director of Music

Robert Oliver
robert.oliver@paradise.net.nz

Parish Accountant

Jeanette Temelo
smoamanager@xtra.co.nz

Parish Office

smoaoffice@xtra.co.nz

MASSES

Sunday 7am, 9am, 11am, 5pm

Monday to Friday 7:30am, 12:05pm, & 5:15pm

Saturday 11am

EACH MONTH

4th Saturday 11am Mass with Sacrament of Anointing

ADORATION

Monday to Friday 6:45am-7:30am

Friday 11am-noon

RECONCILIATION

Monday to Thursday 11:30am-noon
12:30pm-1:00pm
4:30pm-5:00pm

Friday 11:00am-noon
12:30pm-1:00pm
4:30pm-5:00pm

Saturday 10:30am-11:00am
4:00pm-5:00pm

27th October 2013, 30th Sunday Ordinary Time Year C

Memorial Mass for Deceased Parishioners and Family Members

Each year the Parish celebrates Mass for deceased parishioners and family members of parishioners who have died during the past year. This Mass will be celebrated on Thursday 7 November at 5.15pm followed by a light supper.

I hope many parishioners and friends will come to pray for those loved ones who have gone before us 'marked with the sign of faith'. It would be appreciated for catering purposes if you could let the Parish Office know if you are coming.

Month of the Holy Souls

During the month of November we have a Remembrance Book for the Holy Souls and you can write the names of any Holy Souls in the book and they will be prayed for at every Mass celebrated in our Chapel during November. The book is on a small table in the Chapel.

If you would like a special Mass Intention for those who have died please write the name of the person(s) on the envelope provided on the table at the entrance to the Hall/Chapel, place a Mass stipend inside and either give it to one of the priests or Sister Frances or hand it into the Parish Office.

Feast of All Saints - Friday 1 November

Next Friday is the Feast of All Saints. It is also the First Friday of the Month so there will be four Masses in our Parish Hall: 7.30am, 12.05pm, 1.05pm & 5.15pm.

Vespers for All Saints Day

The Feast of all Saints is one of the most ancient and important in the Church, and The Parish of St Mary of the Angels will celebrate it with Vespers in St Joseph's Church, Mt Victoria, on Friday 1st November at 7.30pm. The choir will sing the Gregorian antiphons, psalms and canticle for the day, with the Magnificat, in a setting by Palestrina. The liturgy, which lasts for 50 minutes, will be followed by a short concert of choral music appropriate to the day.

While our own Church is closed for seismic strengthening, we are very fortunate to be able to find such a sympathetic home as St Joseph's, which has a lovely organ, and acoustics which are particularly good for choral music. We are very grateful to St Joseph's Parish for hosting us and we hope you can join us there.

Labour Day

Monday 28th October is a Public Holiday. There will be only one Mass at 9am.

INVEST IN YOUR FAITH

CATHOLIC DEVELOPMENT FUND of WELLINGTON

This Week's Readings

| | | |
|---|---------------|------------------------|
| First Reading | Sirach | 35:12-14. 16-19 |
| <i>The prayer of the humble will penetrate the heavens.</i> | | |
| Second Reading | 2 Tim | 4:6-8. 16-18 |
| <i>All that remains is the crown of righteousness reserved for me.</i> | | |
| Gospel Reading | Luke | 18:9-14 |
| <i>The publican returned to his home justified; the Pharisee did not.</i> | | |

Next Week's Readings

| | | |
|-----------------------|----------------|---------------------|
| First Reading | Wis | 11:22 - 12:2 |
| Psalm | 144 | |
| Second Reading | 2 Thess | 1:11 - 2:2 |
| Gospel Reading | Luke | 19:1-10 |

Last Sunday's Collection

| | |
|------------------|---------|
| Total | \$3,879 |
| Parish Expenses | \$2,754 |
| Support of House | \$1,125 |



PARISH QUIZ NIGHT

All parishioners, friends and families are invited to attend the St Mary of the Angels Parish Quiz Night, organised by the Parish Council, on Saturday 23rd November from 6.30pm - 10pm in Connolly Hall. This is an opportunity to get together for an evening of community and friendly competition, amidst the disruption of closing of the Church for seismic strengthening. The quiz will begin at 7pm. Put together a team or just turn up on the night. Please bring a plate of food and drink to share for supper.

Mass has been offered for:

Recently Deceased:

Anniversaries: Margo McAuley, Stephen Reidy, Olive Va'a

Prayers for the Sick: John Foden, Reny Thomas, Barbara Ross, Ann Ross, Helen Havasi, Mary Egan, Kathleen Phelan, Patricia Smyth, Maurice Yates, Maureen McDonald, Dulcie Campbell, Joanna Veltman, Losalia Leo, Lisa Alo.



Please remember in your prayers, these and the other sick of the Parish. If you know of anyone who is confined to their home or who needs a visit with Holy Communion, please contact Sister Frances at the Parish Office.

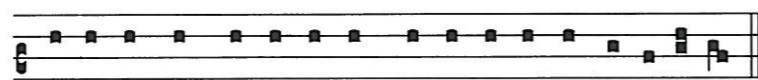
Responsorial Psalm 32

R. The Lord hears the cry of the poor.

I will bless the Lord at all times,
his praise always on my lips;
in the Lord my soul shall make its boast.
The humble shall hear and be glad. **R**

The Lord turns his face against the wicked
to destroy their remembrance from the earth.
The just call and the Lord hears
and rescues them in all their distress. **R**

The Lord is close to the broken-hearted;
those whose spirit is crushed he will save.
The Lord ransoms the should of his servants.
Those who hide in him shall not be condemned. **R**



Iste pauper clama-vit, et Domi-nus ex-audi-vit e-um.

This poor man called, and the Lord heard him.

Adult Education in the Faith Ministry

The next meeting will be on Wednesday 30th October from 5.30pm - 7.30pm in the Presbytery Boardroom, above the Parish Hall.

Theme: Types and schools of Spirituality 1.

Session 4: (II) Apostolic Spirituality - Introduction and (1) Dominican Spirituality, (2) Franciscan Spirituality.

The two year level one spirituality course, 'An Introduction to Christian Spirituality' will begin again next year (2014).

The sessions will be held each Thursday from 7.30pm - 9.30pm at Pa Maria, Thorndon. If you wish to participate in this course please contact Father Michael Young sm.

473 8074 or smoaoffice@xtra.co.nz

Mass Co-ordinators

Each Sunday in our Parish many generous people are involved in ministries to ensure that our liturgies are planned and celebrated in the best possible way so that we can give glory to God. Our choir's lead us in song and chant, readers proclaim the word of God for us, our special Eucharistic ministers distribute the Body and Blood of Christ and there are many other ways in which people contribute to the liturgical life of the Parish.

One ministry which we need to develop in our Parish is that of 'Mass Co-ordinator'. This ministry involves someone taking responsibility for coming to Mass at least 20 minutes early to ensure that all those rostered for their duty as Special Ministers, Readers, Collectors etc. are present. If the rostered person has not turned up five minutes before Mass begins then the Mass co-ordinator is responsible to find someone to replace them.

I would like to set up this new ministry with three or four parishioners for each of our Sunday Masses at 9am, midday and 5pm. I would particularly like to involve people who are not presently engaged in any ministry.

If you would like to consider this ministry I would be very pleased to hear from you.

Seismic Strengthening

The planning work for the seismic strengthening of the Church continues and it is hoped that preliminary design drawings will be completed by the end of November. Our Quantity Surveyor will then be able to price the project and tell us the cost.

There is tremendous effort going into this work and the Parish is benefiting from the amazing skills of those involved. It is very challenging to strengthen such a beautiful Church as St Mary of the Angels and at the same time retain the beauty and integrity of such a fine building. Please keep those involved in your prayers and thank God for their generosity, their hard work and their desire to ensure the future of the Church is there for many generations to come.

Father Barry Scannell sm
Parish Priest

Catholic Discipleship College Vacancy

The Catholic Discipleship College is seeking a Household & Formation Leader who will live in as part of our small community of students at the Catholic Discipleship College in Auckland for 2014. Strong faith, leadership and communication skills essential. Contact Myriam Heynen on 021 920 414 or mheyne@ihug.co.nz for more information and a position description by Monday 4 November. www.cdc.ac.nz



Save with the CDF and you'll be helping the needy; each year all of CDF's operating surplus goes to the Archdiocese for social caring and pastoral services.

Saving with us helps your Archdiocese.
Call 0800 4 233 233 or visit www.cdf.co.nz



SMAYACs Prayer Group

All young adults and the young at heart are invited to a time of reflection, prayer and readings, Thursday at 6pm in Parish Hall.

Theology on Tap

St Mary of the Angels Young Adult Catholic's invite everyone to Theology on Tap, tonight at 6.30pm at Hotel Bristol on Cuba St (upstairs in the pool room). This month's speaker is Archbishop John Dew who will speak about 'the Culture of Life'. Contact Sandra 022 171 0679 for details.

Stewardship "How To" Day with Archbishop John Dew

Archbishop John Dew invites you to a Stewardship "How To" day at 9.30am on Saturday 2nd November at St Joseph's Church, Mt Victoria.. The theme is 'Hospitality'. The programme for the day is as follows:

9.30am Tea/Coffee
10am Archbishop John
12pm Lunch (provided)
Afternoon Workshops:
12.45pm Hospitality to the Word
1.45pm Hospitality to Each Other
3pm Hospitality to the Stranger

RSVP by 24th October to Ann Williams
496 1777 or a.williams@wn.catholic.org.nz

Faith on Foot

To complete the Year of Faith, Archbishop John Dew is going on a pilgrimage to each Pastoral Area and the four corners of the Diocese from 17 - 24 November.

The Wellington Central Pastoral Area pilgrimage is scheduled for 3pm on Saturday 23 November. The pilgrimage will begin with a 30 minute walk from Karori Cemetery to St Thomas More Church, Wilton. A liturgy will be celebrated at St Thomas More Church, followed by a time of hospitality. Everyone is invited to this special occasion.

LT McGuinness
BUILDING CONTRACTORS
9 Francis Place,
PO Box 9639, Wellington
Phone (04) 384 8455 Fax (04) 801 8455
Email: ltm@mcguinness.co.nz

Little Peckish
Café
Feeling a little peckish?
Dukes Arcade · Great food, coffee, service
Office catering available
Phone 499 7769 · Mobile 0274 461 650

NEW WORLD
WELLINGTON CITY
279 WAKEFIELD ST.
OPEN 7 DAYS | 7AM - MIDNIGHT
WWW.WGTNCITYNEWWORLD.CO.NZ