

For Your Diaries : 2013

17 October, Joshua Catholic Men's Fellowship Meeting (Wellington Branch)
All men are invited to come and join us at our "Praise and Worship" meeting, 7.30pm Thursday 17th of October at Connolly Hall, Guilford Tce, (behind Sacred Heart Cathedral). Theme: "Our Faith in Jesus sets us free". For more information contact David; 387 9714.

17 October, St Pats Old Boys Assoc. Annual Dinner

All 'Town' and 'Stream' Old Boys are invited to attend our annual dinner & presentation of Old Boy of the Year to be held; Thurs 17th Oct 2013, at 6pm, St Pats College, Wellington. Guest Speaker: Steve Hinds. Cost: \$45.00. Contact Hadyn Nicholls for tickets: 04 9734244 or email secretary@spcob.org.nz. visit our website www.spcob.org.nz

18 - 23/27 October, Christian Life Community Retreat Opportunity

Christian Life Community, Wellington is hosting an Ignatian retreat at Magnificat Centre, near Featherston. This is a rare opportunity for an individually guided residential retreat given by 3 experienced spiritual guides. The retreat begins on Friday evening 18th October. The cost is \$600 for five days (ending Wednesday evening, 23rd October) or \$900 for 8 days (ending midday Sunday 27th October). Funding may be available, to subsidise these costs. Please contact Patricia Kane, pakane@ihug.co.nz or (04) 475 8837

19 October 10am - 2pm, St Bernadette's Parish Spring Gala

All are invited to St Bernadette's Parish Spring Gala in the Parish Hall, 194 Naenae Road, Naenae. Wear a flower or floral clothes to win a spot prize! The gala is a fundraiser toward the hall renovation.

19 October - A Quiet Day with Joy Cowley

All are invited to attend 'A Quiet Day with Joy Cowley' - a day of reflection. The theme is 'Holding it all together: the maps and journeys of life. Saturday 19th October, 10am - 3pm, St Andrews on the Terrace, Wellington. Bring your lunch, hot drinks provided. Gold coin donation.

20 October, Catholic Deaf Community Mass

The Catholic Deaf Community invites all deaf to join them for the 9.30am Mass at St Peter and Paul's Church, 60 Knights Road, Lower Hutt on Sunday 20 October. A NZSL interpreter will be present.

25 October, Vigil for Life

All are invited to the Vigil for Life on Friday 25th October at St Anne's Church, Emmett Street, Newtown. The Vigil will begin with Mass at 7pm and finish after Adoration at 9pm. Contact Family Life International ph 237 8343, www.fli.org.nz

Quality Te Aro Offices

5-7 Vivian Street, Wellington

Great location close to Cafe district
Busy arterial road
Air conditioned
Car parking available

Office suites available at an affordable price. Semi-serviced suites (approx 18sqm) that are fully furnished. There is also a company floor area (approx 200sqm) with 5x partitioned offices, Board room and Meeting room. Shared kitchen and shower facilities. Car parking available in the building at an additional rate.

This is a must see for new businesses on a budget. Earthquake Engineering Evaluation IEP Report NBS 80 %

Contact by e-mail for further information: mariabaldock@gmail.com

This newsletter is kindly sponsored by:
Michael Burrowes
of Burrowes and Company
Barristers and Solicitors
phone (04) 473 7733

BURROWES
and Company

Barristers and Solicitors

Please Support our Sponsors



Locally Owned Funeral Directors
Caring in our Community

Is dealing with a
Locally Owned
Funeral Director
important to you?



Wellington
56 Onepu Road, Kilbirnie
Telephone 387-8301

Email: harbour@funeral-link.co.nz
www.harbourcityfunerals.co.nz

WEST PLAZA HOTEL

LOCATION • COMFORT • STYLE

Weekend Special

\$125

One night's stay & cooked breakfast for two

Available Friday, Saturday and Sunday
Subject to availability

110 - 116 Wakefield Street, Wellington
p 0800 731 444

e reservations@westplaza.co.nz
book now westplaza.co.nz



Christian Supplies

www.christiansupplies.co.nz

- See our monthly newsletter in 'The Angelus'
- Freephone 0508 988 988 - Freefax 0508 988 989
email: order@pleroma.org.nz

GLOBUS RELIGIOUS TRAVEL

Faith-based travel is the perfect way to build community. Explore the stories, follow in the footsteps of spiritual leaders and discover the roots of our faith.

For more information call **0800 Globus** or speak with *St Mary of the Angels* parishioner **Tracey Driscoll**, Area Sales Manager, Globus family of brands.

Sistine Chapel, Vatican City

The Angelus

St Mary of the Angels Parish

Church and Presbytery:

17 Boulcott Street,

Wellington Central

Telephone: 473 8074

Parish website: www.smoa.org.nz

St Mary of the Angels is a diverse community which seeks to praise and thank God in a place of calm and beauty and strives to be Christ alive in Central Wellington

Parish Priest

Fr Barry Scannell SM

smoapp@xtra.co.nz

Assistant Priest

Fr Tom O'Connor SM

Adult Education

Fr Michael Young SM

Pastoral Worker

Sr Frances Gibbs CSB

Director of Music

Robert Oliver

robert.oliver@paradise.net.nz

Parish Accountant

Jeanette Temelo

smoamanager@xtra.co.nz

Parish Office

smoaoffice@xtra.co.nz

MASSES

Sunday 7am, 9am, 11am, 5pm

Monday to Friday 7:30am, 12:05pm, & 5:15pm

Saturday 11am

EACH MONTH

4th Saturday 11am Mass with Sacrament of Anointing

ADORATION

Monday to Friday 6:45am-7:30am

Friday 11am-noon

RECONCILIATION

Monday to Thursday 11:30am-noon

12:30pm-1:00pm

4:30pm-5:00pm

Friday 11:00am-noon

12:30pm-1:00pm

4:30pm-5:00pm

Saturday 10:30am-11:00am

4:00pm-5:00pm

13th October 2013, 28th Sunday Ordinary Time Year C

RCIA - Rite of Acceptance 2013

The *Rite of Acceptance* for those enquiring about the Catholic Church is to be celebrated this Sunday 13th October at the 5pm Mass - at St Josephs. This ceremony is the first of the Rites of the *Rite of Christian Initiation of Adults* (RCIA).

These people are saying 'we are interested in the Catholic Church and wish to keep enquiring and learning more about Christ and his Church.

Some of the enquirers are not baptised and they now become 'Catechumens'. As Catechumens, they have a special connection with the Church. The Ritual says of them: "From this time on the Church embraces the Catechumens as its own with a mother's love and concern." (RCIA #47)

Some enquirers have been baptised in one of our sister Christian Churches and we call them 'Candidates'. Their enquiry about and interest in the Catholic Church is one of Christian unity. Please pray for both Catechumens and Candidates.

Catechumens (Not Baptised)

Alice Chong
Christopher Chung
Danny Lee
Jim Jin-Moiku
Romana Vella
Tracy Wernicki

Candidates (Baptised)

Lucy MacLeod
Liam McGarvey
Joy Nicholls
Luisa Schuster
Mike Selwyn
Patrick Tierney

Mission Sunday

World Mission Sunday 2013 takes place next Sunday, 20th October. Collection envelopes are available this week. World Mission Sunday provides Catholics with the opportunity to unite with their missionary brothers and sisters, and to recommit themselves to the Church's missionary activity, through prayer, sacrifice and financial contribution. Funds raised are used to assist young Churches and missionaries in helping communities in need, both spiritually and materially. Thank you for your support.

MISSIONZ

INVEST IN YOUR FAITH

CATHOLIC DEVELOPMENT FUND of WELLINGTON

This Week's Readings

First Reading	Kings	5:14-17
<i>Naaman returned to Elisha, the prophet, and acknowledged the Lord.</i>		
Second Reading	2 Tim	2:8-13
<i>If we hold firm, we shall reign with Christ.</i>		
Gospel Reading	Luke	17:11-19
<i>It seems that no one had returned to give thanks to God except this foreigner.</i>		

Next Week's Readings

First Reading	Ex	17:8-13
Psalm	120	
Second Reading	2 Tim	3:14 - 4:2
Gospel Reading	Luke	18:1-8

Last Sunday's Collection

Total	\$4,031
Parish Expenses	\$2,862
Support of House	\$1,169



Vespers for All Saints Day

All are invited to join in celebrating Vespers for All Saints Day at 7.30pm on Friday 1st November at St Joseph's, Mt Victoria. The service will be lead with music by the St Mary of the Angels Choir.

Christmas Cards

St Vincent de Paul Christmas Card packs are now available for purchase from the Parish Office for \$2.50 per pack (5 card per pack).



Columban Calendars

2014 Columban Calendars are now available for purchase from the St Mary of the Angels Parish Office for \$10 each.

Mass has been offered for:

Recently Deceased: Eileen Dysart

Anniversaries: Bryan Outtrim, Colin Hooper, John Casserley

Prayers for the Sick: John Foden, Reny Thomas, Barbara Ross, Ann Ross, Helen Havasi, Mary Egan, Kathleen Phelan, Patricia Smyth, Maurice Yates, Maureen McDonald, Dulcie Campbell, Joanna Veltman.



Please remember in your prayers, these and the other sick of the Parish. If you know of anyone who is confined to their home or who needs a visit with Holy Communion, please contact Sister Frances at the Parish Office.

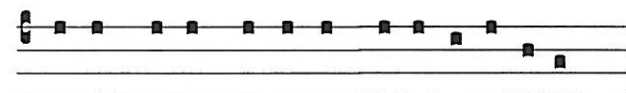
Responsorial Psalm 97

R. The Lord has revealed to the nations his saving power.

Sing a new song to the Lord
for he has worked wonders.
His right hand and his holy arm
have brought salvation. **R**

The Lord has made known his salvation;
has shown his justice to the nations.
He has remembered his truth and love
for the house of Israel. **R**

All the ends of the earth have seen
the salvation of our God.
Shout to the Lord all the earth,
ring out your joy. **R**



No-tum fe-cit Domi-nus sa-lu-ta-re su-um.

The Lord hath made known His salvation.

St Mary of the Angels Choir

The St Mary of the Angels Choir (which sing at 12pm Mass on Sunday) is seeking new members. If you would like to join the choir please contact the Director of Music, Robert Oliver: robert.oliver@paradise.net.nz or approach a choir member after Mass.

Adult Education in the Faith Ministry

The next meeting will be on Wednesday 16th October from 5.30pm - 7.30pm in the Presbytery Boardroom, above the Parish Hall.

Theme: Types and schools of Spirituality 1.

Session 1: (1) Monasticism, Monastic Spirituality:
(2) Augustinian Spirituality

Reflection: 'Wasting Time' With God

A priest-mentor once said to me that prayer is wasting time with God.

On first hearing it, this description of prayer sounded a little irreligious, a little disrespectful of God. Why? I guess because so often in my youth wasting time was associated with negative overtones of laziness, a lack of productivity and a squandering of time and energy.

But, on reflection, he was putting before me a kind of paradox challenging me to think of prayer a little differently than the conventional "talking to God" approach. And if I lessened the negative overtones associated with the notion of wasting time then wasting time would usually equate with moments of relaxation which some will argue is not wasting time at all!

Anyway, in moments such as these I realise that when I am wasting time I am usually doing the things I enjoy! When the chore is done, an onerous job is completed and the necessary duty has been satisfactorily executed, I am able to relax a little, unwind a bit, even give way to some wishful thinking, or a spot of idle day-dreaming; all the sweeter when shared with a friend. Then, one could say I am wasting time productively!

Wasting time with God becomes time spent with a friend.

This does not mean that my time with God is not challenging.

After all, a good friend knows how to challenge because he or she knows me well enough to say when I am not being myself, or when I am better than the way I am acting, or when there is more room for improvement rather than settling for the mediocre. If a true friend is likened to another self, being challenged actually enriches the bond of friendship.

Of course, every relationship requires effort if it is to be sustained. But if it is a question of enriching the heart then the effort required is given willingly and freely. If prayer is wasting time with God, spirituality is enrichment of the heart.

Grace is the presence and action of God. I am graced when I am open to God's presence and action in my life. Grace is a presence and action that is sometimes comforting, sometimes challenging and sometimes the enjoyment of simple pleasures. Grace is a presence and action that is constant and always open to my welcome.

If prayer is wasting time with God and spirituality is enrichment of the heart, I can only hope that those progressing through the levels of the spirituality course I have been giving under the auspices of the parish Adult Education in the Faith Ministry have found and are finding the material helpful for their own spiritual enrichment touching every moment of their lives including those moments of wasting time (an easy-chair time, a coffee break time) with God.

Fr Michael Young, S.M.



SMAYACs Holy Hour

All young adults and the young at heart are invited to a Holy hour of adoration, prayer and reflection in the Parish Hall this Thursday, 17th October at 6pm.

Heart Aflame

Hearts Aflame is a ten day Catholic summer school that is open to young adults aged 18 to 35. Hearts Aflame 2014 will take place in Nga Tawa Diocesan School, Marton, from Friday 3rd January until Sunday 12th January 2014. The cost is \$495 per person which covers all meals, accommodation and scheduled activities.

For more information or to register visit the website www.heartsaflame.org.nz

St Vincent de Paul

The next meeting of the St Vincent de Paul City Conference will be held on Tuesday 15th October at 6pm in the Parish Hall. New members are most welcome.

Communio Discussion Group

The last Communio meeting for 2013 will be held tonight, Sunday 13th October at 7.15pm in the Presbytery Boardroom. We will consider the 2002 paper by Francis Cardinal Stafford on the identity and mission of the laity in the light of the teachings of Vatican II. For copies of the paper contact Leo or Mary Buchanan at 387 8284 or leobuchanan@xtra.co.nz

LT McGuinness
BUILDING CONTRACTORS
9 Francis Place,
PO Box 9639, Wellington
Phone (04) 384 8455 Fax (04) 801 8455
Email: ltm@mcguinness.co.nz

Little Peckish
Café
Feeling a little peckish?
Dukes Arcade · Great food, coffee, service
Office catering available
Phone 499 7769 · Mobile 0274 461 650

NEW WORLD
WELLINGTON CITY
279 WAKEFIELD ST.
OPEN 7 DAYS | 7AM - MIDNIGHT
WWW.WGTNCITYNEWWORLD.CO.NZ

CDF
Catholic Development Fund of Wellington

Save with the CDF and you'll be helping the needy;
each year all of CDF's operating surplus goes to the
Archdiocese for social caring and pastoral services.

Saving with us helps your Archdiocese.
Call 0800 4 233 233 or visit www.cdf.co.nz

