

For Your Diaries : 2013

22 August, Winter Dialogue on Youth, Employment and Work

All are invited to a discussion on Young people's experience in the work place at St Joseph's Church, Mt. Victoria on Thursday 22nd August from 7.30pm - 9pm. The discussion will include speaker Cathy Bi from Caritas Aotearoa and a panel of young speakers. The evening will finish with a supper and a koha will be collected for the Refugee Family Reunification Trust. Parking is available. Any inquiries contact Marie Kearney on marie.kearney@hotmail.com or (04) 384 9891.

24 August, Catholic Men's One-Day Retreat

All men are invited to attend a one day retreat at Pa Maria, 78 Hobson St, Wellington on 24th August from 8.30am - 5pm. The theme is 'Recognise the call of Jesus'. The retreat will be lead by Fr Denis O'Hagan sm. Bring a lunch to share. For more information contact Steve on 027 547 0737 or email joshuawgthb@paradise.net.nz

25 August, Catholic Deaf Community Mass

The Catholic Deaf Community invites all deaf to join them for the 9.30am Mass at St Peter and Paul's Church, 60 Knights Road, Lower Hutt on Sunday 25 August. A NZSL interpreter will be present.

7 September, Vigil for Life

All are invited to a Vigil for Life at St Anne's Church, Emmett Street, Newtown. 10am Mass followed by Exposition until Noon. A peaceful rosary pilgrimage to the hospital will take place during Exposition. The Vigil will end with a shared lunch. For further information phone Family Life International on 237 8343

1-3 November 2013, Rachel's Vineyard Retreats

A Retreat weekend for those whose lives have been touched by abortion. Information and support is available for men and women. All enquiries are strictly confidential. Contact Wendy Hill on 027 254 9222 or email info@rachelsvineyard.org.nz or visit www.rachelsvineyard.org.nz

St Vincent de Paul requires donations of baby clothing, cloth nappies and pins, cot and bassinet bedding, toys etc... Donations can be dropped off at any St Vincent de Paul shop or please phone 389 7122 to have items collected. Thank you for your help.

Traditional Latin Mass is at 4.30pm each Sunday during August at St Peters on Willis St (Quire). Enquiries Neil Coup 021 896 924

Quality Te Aro Offices

5-7 Vivian Street, Wellington

Great location close to Cafe district
Busy arterial road
Air conditioned
Car parking available

Office suites available at an affordable price. Semi-serviced suites (approx 18sqm) that are fully furnished. There is also a company floor area (approx 200sqm) with 5x partitioned offices, Board room and Meeting room. Shared kitchen and shower facilities. Car parking available in the building at an additional rate.

This is a must see for new businesses on a budget. Earthquake Engineering Evaluation IEP Report NBS 80 %

Contact by e-mail for further information: mariabaldock@gmail.com

This newsletter is kindly sponsored by:
Michael Burrowes
of Burrowes and Company
Barristers and Solicitors
phone (04) 473 7733

BURROWES
and Company

Barristers and Solicitors

Please Support our Sponsors



Locally Owned Funeral Directors
Caring in our Community

Is dealing with a
Locally Owned
Funeral Director
important to you?

Harbour City

FUNERAL HOME

Wellington

56 Onepu Road, Kilbirnie
Telephone 387-8301

Email: harbour@funeral-link.co.nz
www.harbourcityfunerals.co.nz

WEST PLAZA HOTEL

LOCATION • COMFORT • STYLE

Weekend Special

\$125

One night's stay & cooked breakfast for two

Available Friday, Saturday and Sunday
Subject to availability

110 - 116 Wakefield Street, Wellington
p 0800 731 444
e reservations@westplaza.co.nz
book now westplaza.co.nz



Christian Supplies

www.christiansupplies.co.nz

- See our monthly newsletter in 'The Angelus'
- Freephone 0508 988 988 - Freefax 0508 988 989
email: order@pleroma.org.nz

GLOBUS RELIGIOUS TRAVEL

GLOBUS

Faith-based travel is the perfect way to build community. Explore the stories, follow in the footsteps of spiritual leaders and discover the roots of our faith.

For more information call **0800 Globus** or speak with
St Mary of the Angels parishioner **Tracey Driscoll**,
Area Sales Manager, Globus family of brands.

Sistine Chapel, Vatican City

The Angelus

St Mary of the Angels Parish

Church and Presbytery:

17 Boilcott Street,
Wellington Central

Telephone: 473 8074

Parish website: www.smoa.org.nz

St Mary of the Angels is a diverse community which seeks to praise and thank God in a place of calm and beauty and strives to be Christ alive in Central Wellington

Parish Priest

Fr Barry Scannell SM
smoapp@xtra.co.nz

Assistant Priest

Fr Tom O'Connor SM

Adult Education

Fr Michael Young SM

Pastoral Worker

Sr Frances Gibbs CSB

Director of Music

Robert Oliver
robert.oliver@paradise.net.nz

Parish Accountant

Jeanette Temelo
smoamanager@xtra.co.nz

Parish Office

smoaoffice@xtra.co.nz

MASSES

Sunday 7am, 9am, 11am, 5pm

Monday to Friday 7:30am, 12:05pm,
& 5:15pm

Saturday 11am

EACH MONTH

4th Saturday 11am Mass with
Sacrament of Anointing

ADORATION

Monday to Friday 6:45am-7:30am

Friday 11am-noon

RECONCILIATION

Monday to Thursday 11:30am-noon
12:30pm-1:00pm
4:30pm-5:00pm

Friday 11:00am-noon
12:30pm-1:00pm
4:30pm-5:00pm

Saturday 10:30am-11:00am
4:00pm-5:00pm

18th August 2013, 20th Sunday Ordinary Time Year C

Thank You

A sincere thank you to St Mary of the Angels Choir for leading us so magnificently in the beautiful prayer of Vespers on the Feast of the Assumption. I was truly reminded of what a 'jewel' we have in our Parish with our Choir when we are able to listen to such beautiful voices and the music of Gregorian Chant.

We are also blessed with our 9am Choir and the 5pm Music Group who both lead us in our singing for these Masses. All three music groups in the Parish have been severely disadvantaged with the closing of the Church as they now have to take music, instruments and other necessities to our other places of worship. I know all of us in the Parish would like to thank them for their commitment and dedication in these difficult circumstances and we wish to assure them that we appreciate their gifts and talents - which so enhances our Sunday liturgy.

If you would like to join the Choir or the 9am or 5pm Music Group please contact Robert Oliver (934 2296) - there is no audition.

Welcome

Today we welcome back Maxwell Fernie Scholar Thomas Gaynor. Thomas is currently studying Organ at the Eastman School of Music in Rochester, New York. He has returned to New Zealand briefly for a holiday and we are thrilled to have him playing for us at midday Mass today.

First Friday Masses

Last Thursday on the Feast of the Assumption we celebrated two Masses at lunch-time in our Parish Hall (now our Chapel) at 12.05pm and 1.05pm. This was because of our smaller worshipping space and by celebrating two Masses it meant that it was not so crowded.

We always get larger crowds on the First Friday of each month so beginning on Friday 6 September we will trial having two Masses on the first Friday of each month; i.e. 12.05pm and 1.05pm.

I would be grateful for any 'feedback' on this proposed arrangement.

Fr Barry Scannell sm
Parish Priest

INVEST IN YOUR FAITH

CATHOLIC DEVELOPMENT FUND of WELLINGTON

This Week's Readings

First Reading Jer 38:4-6, 8-10.
You bore me to be a man of strife for the whole world.

Second Reading Heb 12:1-4
Let us bear patiently the struggle placed upon us.

Gospel Reading Luke 12:49-53
I have come not to give peace, but discord.

Next Week's Readings

First Reading Isaiah 66:18-21
Psalm 116
Second Reading Heb 12:5-7, 11-13
Gospel Reading Luke 13:22-30

Last Sunday's Collection

Total	\$4,203
Parish Expenses	\$2,984
Support of House	\$1,219



RCIA

The Rite of Christian Initiation of Adults (RCIA) is the process through which adults are invited to learn about the Catholic faith and way of life. St Mary of the Angels is holding an introductory evening this Tuesday 20th August at 7.15pm in the Parish Hall, 17 Boulcott St Wellington. If you would like more information or wish to enrol please phone the Parish Office 473 8074. or email: smoaoffice@xtra.co.nz or Fr Tom O'Connor 027 437 7207.

Parishioners, please invite someone whom you know to be interested in our Catholic Faith and pray for the RCIA people in our Parish – Candidates, Sponsors, and Leaders.

Thank you.

Fr Tom O'Connor sm & RCLA team

Mass has been offered for:

Recently Deceased: Paul Veltman, Fr Neville Browne

Anniversaries: Kathleen Margaret Spencer, Kevin Fitzgerald, Anna Zanotto, Kathleen McCready, Catherine O'Neill, Noline Ryan, Dean Gifford

Prayers for the Sick: Janice Flowers, Reny Thomas, Joanna Veltman, Barbara Ross, Ann Ross, Maureen McDonald, Lisa Alo, Dulcie Campbell, Helen Havasi, Patricia Smyth, Miriam Menzies, Kathleen Phelan, Mary Egan.



Please remember in your prayers, these and the other sick of the Parish. If you know of anyone who is confined to their home or who needs a visit with Holy Communion, please contact Sister Frances at the Parish Office. Phone 473 8074.

Responsorial Psalm 39

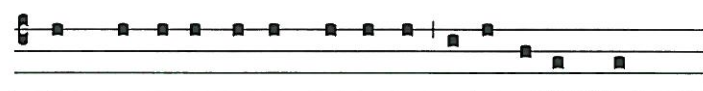
R. Lord, come to my aid!

I waited, I waited for the Lord
and he stooped down to me;
he heard my cry. **R**

He drew me from the deadly pit,
from the miry clay.
He set my feet upon a rock
and made my footsteps firm. **R**

He put a new song into my mouth,
praise of our God.
Many shall see and fear
and shall trust in the Lord. **R**

As for me wretched and poor,
the Lord thinks of me.
You are my rescuer, my help,
O God, do not delay. **R**



Compla-ce- at ti-bi, Domi-ne, ut e-ru- as me.

Be pleased, O Lord to deliver me.

Adult Education in the Faith Ministry

The next meeting will be on Wednesday 21st August from 5.30pm - 7.30pm in the Presbytery Boardroom, above the Parish Hall.

Theme: A Brief History of Spirituality 3.

Session 1: Introduction and 'Protestant' Reformation

St Mary of the Angels Choir

The St Mary of the Angels Choir is seeking new members. If you would like to join the choir please contact Robert Oliver (934 2296) - there is no audition.

Reflection: World Youth Day 2013

During the week of July 23 - 28 over 1 million Catholic and Christian pilgrims, young and old, gathered with Pope Francis in Rio de Janeiro for World Youth Day 2013. Below is an extract from Pope Francis' homily in the closing Mass on Copacabana Beach.



Dear Young Friends

*Go and make disciples of all nations. Jesus is calling you to be a disciple with a mission! Today, in the light of the word of God that we have heard, what is the Lord saying to us? Three simple ideas: **Go, do not be afraid, and serve.***

1. Go!

...Jesus did not say: "if you would like to, if you have the time", but: "Go and make disciples of all nations." Sharing the experience of faith, bearing witness to the faith, proclaiming the Gospel: this is a command that the Lord entrusts to the whole Church, and that includes you; but it is a command that is born not from a desire for domination or power but from the force of love, from the fact that Jesus first came into our midst and gave us, not a part of himself, but the whole of himself, he gave his life in order to save us and to show us the love and mercy of God. Jesus does not treat us as slaves, but as free men, as friends, as brothers and sisters; and he not only sends us, he accompanies us, he is always beside us in our mission of love. ...

2. Do not be afraid!

...Jesus did not say: "One of you go", but "All of you go": we are sent together. Dear young friends, be aware of the companionship of the whole Church and also the communion of the saints on this mission. When we face challenges together, then we are strong, we discover resources we did not know we had. Jesus did not call the Apostles to live in isolation, he called them to form a group, a community. I would like to address you, dear priests concelebrating with me at this Eucharist: you have come to accompany your young people, and this is wonderful, to share this experience of faith with them! But it is a stage on the journey. Continue to accompany them with generosity and joy, help them to become actively engaged in the Church; never let them feel alone!

3. Serve!

...The opening words of the psalm that we proclaimed are: "Sing to the Lord a new song" (Psalm 95:1). What is this new song? It does not consist of words, it is not a melody, it is the song of your life, it is allowing our life to be identified with that of Jesus, it is sharing his sentiments, his thoughts, his actions. And the life of Jesus is a life for others. It is a life of service.

***Go, do not be afraid, and serve.** If you follow these three ideas, you will experience that the one who evangelizes is evangelized, the one who transmits the joy of faith receives joy.*

-Pope Francis, WYD 2013

SMAYACs Prayer Group

All young adults and the young at heart are invited to a time of prayer, readings and reflection every Thursday at 6pm in St Mary of the Angels Parish Hall.

Theology of the Body

All are invited to the Theology of the Body sessions 6.30pm Tuesdays at Kohanga (4 Kelburn Parade). For more information contact Sandra 022 171 0679 or smayacs@gmail.com.

Theology on Tap

All are invited to the next Theology on Tap session on Sunday 25 August at 6.30pm. This month's speaker will be Sr Marie Gore who will speak about 'Unity in the midst of diversity'. This month's location will be advised next week, so keep your eyes peeled. For more information contact Sandra 022 171 0679 or smayacs@gmail.com.

Experienced Souls

Experienced Souls is a programme for people to come together to discuss and reflect on their faith journey in our Catholic community and your own heart. The programme is run by parishioner Monica O'Connell with support from Fr Michael Young sm and is intended for older Catholics, but all are welcome. The next session will take place on Saturday 24th August from 9am - 10.45am (before the 11am Mass).

St Vincent de Paul

The next meeting of the St Vincent de Paul Society City Conference is on Tuesday 20th August at 6pm in the Parish Hall. New members most welcome.

LT McGuinness LIMITED
BUILDING CONTRACTORS
9 Francis Place,
PO Box 9639, Wellington
Phone (04) 384 8455 Fax (04) 801 8455
Email: ltm@mcguinness.co.nz

Little Peckish Cafe
Feeling a little peckish?
Dukes Arcade • Great food, coffee, service
Office catering available
Phone 499 7769 • Mobile 0274 461 650

NEW WORLD WELLINGTON CITY
279 WAKEFIELD ST.
OPEN 7 DAYS | 7AM - MIDNIGHT
WWW.WGTNCITYNEWWORLD.CO.NZ

CDF
Catholic Development Fund of Wellington

Save with the CDF and you'll be helping the needy; each year all of CDF's operating surplus goes to the Archdiocese for social caring and pastoral services.

Saving with us helps your Archdiocese.
Call 0800 4 233 233 or visit www.cdf.co.nz



RESURRECTING AN ICON

It's tucked away in the heart of the city; an architectural treasure people pass daily: St Mary of the Angels Catholic church. Its garden is an urban oasis, especially during the summer, although many haven't even peered through the building's front door.



by Nicola Young
nicola@nicolayoung.co.nz
www.nicolayoung.co.nz

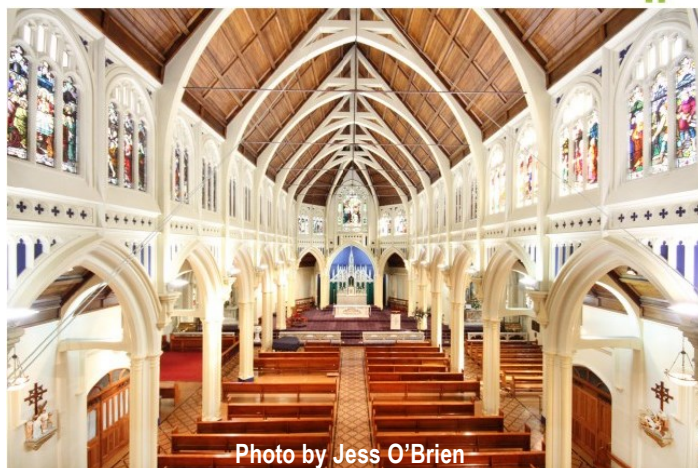


Photo by Jess O'Brien

They'll have to wait. Wellington's heritage Catholic Church, in Boulcott Street, is now closed until it's been earthquake strengthened.

It's the world's first reinforced concrete Gothic-style church, and the third church on the site. First was a simple wooden chapel; blessed by Bishop Pompallier in 1844. Next was a grander timber church, opened in 1873 and largely funded from Europe. After that burned down in 1918, the current church was built.

Rather ecumenically, it was designed by Anglican diocesan architect Frederick de Jersey Clere, a specialist in Gothic Revival. St Mary of the Angels is his best-known building; he considered it 'his cathedral', having missed out on St Paul's Anglican cathedral (designed by Cecil Wood in 1938, although construction didn't begin until 1955).

St Mary's traditional French Gothic appearance is deceptive. It's modelled on the 13th century Cathedral of St Michael and St Gudula in Brussels, but the use of reinforced concrete at St Mary's was highly innovative. Unskilled day labourers were used, once they'd been taught to use concrete mixers, using materials imported from France

and Canada (post-WWI shortages) at three times the normal price.

It was a difficult site, on a rocky slope right in the heart of Wellington. Then parish priest Father Stan Mahoney often couldn't pay the workmen until the Sunday church collection, and he became a familiar figure on the scaffolding; as noted on the foundation stone 'S Mahoney SM – parochus et aedificator' (pastor and builder).

The new St Mary's opened in May 1922. Three stained glass windows were salvaged from the earlier church; the rest came from Munich, and, following the tradition of Europe's Medieval cathedrals, they're an example of a 'Poor Man's Bible', explaining Biblical stories: 14 Parables and 14 Miracles.

The high altar, crafted in Lyon from Italian marble, wasn't completed until 1956; the original top had broken in transit, so a wooden one was used until the church became debt-free 24 years later.

Although geographically one of New Zealand's smallest parishes, it serves the burgeoning Te Aro area, and a much larger community attracted by the architecture, and the tradition of the choir

singing Gregorian Chant at Sunday's 11am Mass. It's bigger than the Basilica (the Catholic cathedral in Hill Street), seating 550, and often used for concerts because of its sublime acoustics. Gregorian chant has been a feature since 1905; regular broadcasts commenced in 1930 and its music became even better known after Maxwell Fernie was appointed organist and choirmaster in 1959 (featured in Tommy's Issue 82, July 2009). Fernie had been the organist at Westminster Cathedral in London and his musical traditional lives on. One choir member travels from Ohakune every Thursday for choir practice, staying with her children until returning home after Mass on Sunday.

Several famous Catholics have preached in the church, most famously Karol Wojtyla, now better known as Pope John Paul II.

St Mary's (as locals call it) is full of my family's history: the weddings of my paternal great-grandparents (1878) and grandparents (1913), both in the old timber church; my parents (Bill and Joan Young) in the current building (1946), and my father's funeral (2009).

When the church was built, my great-grandparents (George

and Annie Lambert) donated the baptismal font, the altar of St Joseph and, high above the main altar, the Nativity window, which – due to a trick of placement – is nearly always bathed in light, even on overcast days.

Some repairs were needed after the two 1942 earthquakes (7.2 and 6.8); it was brought up to code in the 1980s, with further restoration in 1990s. Now the goal is 100% of the new Building Code; there's been five years of geo-tech analysis, with engineers and architects working out how it can best be strengthened.

"It's very difficult to get an accurate assessment of its percentage of building code; it could be 38%, or it could 17%. We won't know until the columns and portals have been x-rayed and concrete samples taken", says parish priest, Father Barry Scannell.

"It's a challenge; bringing a heritage building up to standard, without ruining its architectural integrity. Active fundraising is about to start – a huge project, with costs estimated between \$5 million and \$8 million. We'll go everywhere for the money, because it's an icon in the middle of the city, for the whole of Wellington".