

For Your Diaries : 2013

5 August, Natural Fertility Workshop

Natural family planning is holding a workshop on Monday 5th August from 7pm-9pm at the Hutt Irish Society Rooms, 12 Raroa Road, Lower Hutt. To register or for further information please contact Wendy Hill: info@greenstoneddoors.co.nz, 027 254 9222. Cost \$25.

Friday 9 August - Catholic Institute Course On Sacraments

The course will be held at the Catholic Centre at 5.30pm. This course examines the key ideas associated with the theology and practice of the Catholic sacraments and significant aspects of their historical development. For more information and enrolment Ph 04 974 5384

10 August, 8pm, 'Live in the Crypt', St Mary of the Angels Parish Hall

All are invited to an evening of early baroque, Italian and English music with music by Frescobaldi, William Byrd, Alfonso Ferrabosco, Robert Jones Dowland, Campion, Monteverdi and their contemporaries. Pepe Becker (soprano), joins Douglas Mews (virginals) and Robert Oliver (bass viol) in this special concert. Please note the change in venue - This concert will now take place in the St Mary of the Angels Parish Hall. Admission is \$15 or (\$5 for students with ID).

9-11 August - Come away to be refreshed and renewed - Dove Retreat

Dove Catholic Fellowship for Women National team invites all women to a retreat weekend with special guest speaker Bev McDonald. Theme: 'Love like Mary'. Venue: El Rancho in Waikanae Christian Holiday Park Register online at www.dove.org.nz. **For late registrations or further information** please contact Shona Williams on 07 543 0101 or email shonawilliams58@gmail.com

11 August, Mary MacKillop - Woman of Faith in the Year of Faith

Come join us at Waiwhetu Parish on Sunday 11th August as we celebrate St Mary of the Cross (Mary MacKillop) - a Woman of Faith in this Year of Faith. We will celebrate an afternoon reflection of prayer, song and fellowship with the Josephite community beginning at 2.30pm at Our Lady of the Rosary Parish, 61 Waiwhetu Road, Lower Hutt. An afternoon tea will be provided afterwards.

1-3 November 2013, Rachel's Vineyard Retreats

A Retreat weekend for those whose lives have been touched by abortion. Information and support is available for men and women. All enquiries are strictly confidential. Contact Wendy Hill on 027 254 9222 or email info@rachelsvineyard.org.nz or visit www.rachelsvineyard.org.nz

Quality Te Aro Offices 5-7 Vivian Street, Wellington

Great location close to Cafe district
Busy arterial road
Air conditioned
Car parking available

Office suites available at an affordable price. Semi-serviced suites (approx 18sqm) that are fully furnished. There is also a company floor area (approx 200sqm) with 5x partitioned offices, Board room and Meeting room. Shared kitchen and shower facilities. Car parking available in the building at an additional rate.

This is a must see for new businesses on a budget. Earthquake Engineering Evaluation IEP Report NBS 80 %

Contact by e-mail for further information: mariabaldock@gmail.com

This newsletter is kindly sponsored by:
Michael Burrowes
of Burrowes and Company
Barristers and Solicitors
phone (04) 473 7733

**BURROWES
and Company**

Barristers and Solicitors

GLOBUS RELIGIOUS TRAVEL

Faith-based travel is the perfect way to build community. Explore the stories, follow in the footsteps of spiritual leaders and discover the roots of our faith.

For more information call **0800 Globus** or speak with **St Mary of the Angels** parishioner **Tracey Driscoll**, Area Sales Manager, Globus family of brands.

GLOBUS

Sistine Chapel, Vatican City

Please Support our Sponsors



Locally Owned Funeral Directors
Caring in our Community

Is dealing with a
**Locally Owned
Funeral Director**
important to you?

Harbour City

FUNERAL HOME

Wellington

56 Onepu Road, Kilbirnie
Telephone 387-8301

Email: harbour@funeral-link.co.nz
www.harbourcityfunerals.co.nz

WEST PLAZA HOTEL

LOCATION • COMFORT • STYLE

Weekend Special

\$125

One night's stay & cooked breakfast for two

Available Friday, Saturday and Sunday
Subject to availability

110 - 116 Wakefield Street, Wellington
p 0800 731 444

e reservations@westplaza.co.nz
book now westplaza.co.nz



Christian Supplies

www.christiansupplies.co.nz

- See our monthly newsletter in 'The Angelus'

- Freephone 0508 988 988 - Freefax 0508 988 989

email: order@pleroma.org.nz

The Angelus

St Mary of the Angels Parish

Church and Presbytery:

17 Boulcott Street,

Wellington Central

Telephone: 473 8074

Parish website: www.smoa.org.nz

St Mary of the Angels is a diverse community which seeks to praise and thank God in a place of calm and beauty and strives to be Christ alive in Central Wellington

Parish Priest

Fr Barry Scannell SM

smoapp@extra.co.nz

Assistant Priest

Fr Tom O'Connor SM

Adult Education

Fr Michael Young SM

Pastoral Worker

Sr Frances Gibbs CSB

Director of Music

Robert Oliver

robert.oliver@paradise.net.nz

Parish Accountant

Jeanette Temelo

smoamanager@extra.co.nz

Parish Office

smoaoffice@extra.co.nz

MASSES

Sunday 7am, 9am, 11am, 5pm

Monday to Friday 7:30am, 12:05pm,
& 5:15pm

Saturday 11am

EACH MONTH

4th Saturday 11am Mass with
Sacrament of Anointing

ADORATION

Monday to Friday 6:45am-7:30am

Friday 11am-noon

RECONCILIATION

Monday to Thursday 11:30am-noon
12:30pm-1:00pm

4:30pm-5:00pm

Friday 11:00am-noon
12:30pm-1:00pm

4:30pm-5:00pm

Saturday 10:30am-11:00am
4:00pm-5:00pm

4th August 2013, 18th Sunday Ordinary Time Year C

Thank You

The past few days have been very demanding and challenging for many of us after the decision to close St Mary of the Angels Church for seismic strengthening after the 6.5 earthquake on Sunday 21 July. So many practical things have to be worked when we found ourselves without a Parish Church.

I firstly wish to thank so many people who have shown extraordinary generosity in this time of need. Father James Lyons from the Cathedral Parish and Father Gerard Burns from St Joseph's in Mt Victoria have welcomed us into their Churches to celebrate our 9am and 5pm Masses. Reverend Allister Lane from St John's Presbyterian Church in Willis Street rang me to say that we would be very welcome to use St John's Church and we are transferring our Choral Mass there with a later starting time of mid-day.

I wish to especially thank Olivia Webb our Parish Secretary who has kept everyone informed by email and through the website of Mass changes and who has performed an extraordinary job of making signs and posters informing groups of the change of venue for their activities.

Thank you all for your support and generosity. It is so important to keep our Parish Community together during this time of transition and for the next 18 months while the Church is closed. I hope that any inconvenience will be quickly overcome and that we will settle into our new places of worship so that we can pray as a community for the challenging work ahead.

Finally, I sincerely thank Brian McGuinness, the Chairman of our Seismic Strengthening Committee. He has been a 'tower of strength' and already scaffolding is in the Church for the 'geo technical' work that needs to take place this week.

Fr Barry Scannell sm
Parish Priest

INVEST IN YOUR FAITH

CATHOLIC DEVELOPMENT FUND of WELLINGTON

This Week's Readings

First Reading Ecc 1:2; 2:21-23
What do people gain by all their work?

Second Reading Col 3:1-5. 9-11
Seek the things that are above where Christ is.

Gospel Reading Luke 12:13-21
To whom will all this wealth of yours go?

Next Week's Readings

First Reading Wis 18:6-9
Psalm 32:1. 12. 18-20. 22.
Second Reading Heb 11:1-2. 8-19
Gospel Reading Luke 12:32-48

Last Sunday's Collection

Total	\$4,495
Parish Expenses	\$3,191
Support of House	\$1,304



Seeking Christ? Wanting to become a Catholic?

Perhaps you are curious about Jesus, or the Catholic Church, or perhaps you know someone who is asking questions about the Catholic Faith?

The Rite of Christian Initiation of Adults (RCIA) is the process through which adults are gradually introduced to the Catholic faith and way of life. St Mary of the Angels is holding an introductory evening on Tuesday 20th August at 7.15pm in the Parish Hall, 17 Boulcott St. Wellington. If you would like more information or wish to enrol please phone the Parish Office 473 8074. or email: smoaoffice@xtra.co.nz or Fr Tom O'Connor 027 437 7207.

Parishioners, please invite someone whom you know to be interested in our Catholic Faith and pray for the RCIA people in our Parish – Candidates, Sponsors, and Leaders. Thank you. *Fr Tom O'Connor sm & RCL team*

Mass has been offered for:

Recently Deceased: Nicanor Uy Sr., Ruairi and Eoghan Chada.

Anniversaries: Fr John Goulter sm, Aiden McLean, James Baird.

Prayers for the Sick: Reny Thomas, Joanna Veltman, Paul Veltman, Barbara Ross, Ann Ross, Maureen McDonald, Lisa Alo, Dulcie Campbell, Helen Havasi, Patricia Smyth, Miriam Menzies, Kathleen Phelan, Mary Egan.



Please remember in your prayers, these and the other sick of the Parish. If you know of anyone who is confined to their home or who needs a visit with Holy Communion, please contact Sister Frances at the Parish Office. Phone 473 8074.

Responsorial Psalm 89

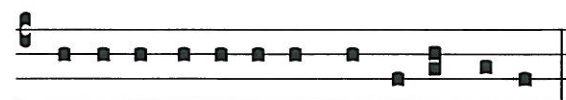
R. In every age, O Lord, you have been our refuge.

You turn men back into dust
and say: 'Go back, sons of men.'
To your eyes a thousand years
are like yesterday, come and gone,
no more than a watch in the night. **R**

You sweep men away like a dream,
like grass which springs up in the morning.
In the morning it springs up and flowers:
by the evening it withers and fades. **R**

Make us know the shortness of our life
that we may gain wisdom of heart.
Lord, relent! Is your anger for ever?
Show pity to your servants. **R**

In the morning, fill us with you love;
we shall exult and rejoice all our days.
Let the favour of the Lord be upon us:
give us success to the work of our hands. **R**



Domi-ne, re-fu-gi- um fac-tus es no-bis

Lord, thou hast been our refuge.

Offertory Hymn For 11am Mass

Number 151

Come down O love divine. Verses 1, 2 & 4.

St Mary of the Angels Choir

The St Mary of the Angels Choir is seeking new members.
If you would like to join the choir please contact Robert Oliver (934 2296) - there is no audition.

ST MARY OF THE ANGELS NEW MASS TIMETABLE

We are very grateful to St John's Presbyterian Church, Willis St; the Cathedral of the Sacred Heart in Thorndon; and St Joseph's Parish, Mt Victoria; for their generosity in accommodating us to celebrate our Parish Masses.

SUNDAY MASS TIMETABLE

7am: St Mary of the Angels Parish Hall

9am: Cathedral of the Sacred Heart

Midday (Choral Mass): St John's in the City, Presbyterian Church

5pm: St Joseph's, Mt Victoria

WEEKDAY AND SATURDAY TIMETABLE

The weekday and Saturday Mass timetable will be celebrated in the St Mary of the Angels Parish Hall.

MONDAY - THURSDAY

6.45am - Exposition
7.30am - Mass
11.30am - 12pm - Reconciliation
12.05pm - Mass
12.30pm - 1pm - Reconciliation
4.30pm - 5pm - Reconciliation
5.15pm - Mass

FRIDAY

6.45am - Exposition
7.30am - Mass
11am - 12pm - Exposition
11am - 12pm - Reconciliation
12.05pm - Mass
12.30pm - 1pm - Reconciliation
4.30pm - 5pm - Reconciliation
5.15pm - Mass

SATURDAY

10.30am - 11am - Reconciliation
11am - Mass
4pm - 5pm - Reconciliation

PUBLIC HOLIDAYS

9am - Mass (St Mary of the Angels Parish Hall)

Please visit our website or join our email list to stay informed on the current status of the seismic strengthening of the Church. Send you name and email address to the Parish Office: smoaoffice@xtra.co.nz. Website: www.smoa.org.nz

SMAYACs Prayer Group

All young adults and the young at heart are invited to a time of prayer, readings and reflection every Thursday at 6pm in St Mary of the Angels Parish Hall.

Theology of the Body

All are invited to the Theology of the Body sessions 6.30pm Tuesdays at Kohanga (4 Kelburn Parade). For more information contact Sandra 022 171 0679 or smayacs@gmail.com.

Communio Discussion Group

The next meeting will be on Sunday 11th August at 7.15pm in the Presbytery Board Room. This month we will consider two brief articles discussing the approach of the brilliant French Cardinal Jean Danielou on how one develops a sense of the presence of God. For further information please contact Leo or Mary Buchanan at 387 8284 or leobuhanan@xtra.co.nz

Adult Education in the Faith Ministry

The next meeting will be on Wednesday 7th August from 5.30pm - 7.30pm in the Parish Hall.

Theme: A Brief History of Spirituality 2.

Session 3: The Middle Ages: Monasticism, Scholasticism, Mysticism (continued) - the Rheno-Flemish Tradition and the English Mystical Tradition (Part 1)

LT McGuinness
BUILDING CONTRACTORS
9 Francis Place,
PO Box 9639, Wellington
Phone (04) 384 8455 Fax (04) 801 8455
Email: ltm@mcguinness.co.nz

Little Peckish
Cafe
Feeling a little peckish?
Dukes Arcade • Great food, coffee, service
Office catering available
Phone 499 7769 • Mobile 0274 461 650

NEW WORLD
WELLINGTON CITY
279 WAKEFIELD ST.
OPEN 7 DAYS | 7AM - MIDNIGHT
WWW.WGTNCITYNEWWORLD.CO.NZ

CDF
Catholic Development Fund of Wellington

Save with the CDF and you'll be helping the needy; each year all of CDF's operating surplus goes to the Archdiocese for social caring and pastoral services.

Saving with us helps your Archdiocese.
Call 0800 4 233 233 or visit www.cdf.co.nz

