

## For Your Diaries : 2013

### 5 May, 8pm, TCI Open Lecture, Sacred Heart Cathedral

All are invited to a lecture by Dr Megan McKenna - a U.S based Scripture storyteller, internationally recognised author, theologian, lecturer, retreat leader, spiritual director. There will be Sunday Eucharist at 7pm prior to the lecture and supper to follow in the Cathedral foyer.

### 17-19 May, Marriage Encounter Weekend

All couples are invited to the Marriage Encounter Weekend at the Magnificat Retreat Centre near Featherston. This special weekend provides an atmosphere for couples to concentrate on each other in privacy, free of the usual distractions and pressures of modern life. To book or for further information phone Francie or Neil on 0800 362 686

### 18 May, Marist College Mt Albert Auckland 85th Jubilee

Past pupils of Marist College, Auckland, are invited to the 85th Jubilee Celebration. Register online at [www.eventfinda.co.nz](http://www.eventfinda.co.nz) or send \$40.00 to Ex-students association, 31 Alberton Ave, Mt Albert, Auckland 1025. Please visit the webpage [www.maristcollege.school.nz/community/exstudents](http://www.maristcollege.school.nz/community/exstudents) for more information.

### 19 May, 7.30pm, Ecumenical Pentecost Vespers

All are invited to attend the Ecumenical Pentecost Vespers at St Mary of the Angels. The service will feature music by Buxtehude and Mozart, sung by the choirs of St John's Presbyterian Church, St Peter and Pauls Anglican Church, and our own choir.

### 22 May, St Mary's College Open Morning

St Mary's College, Guildford Terrace, invites all prospective students to the Open Morning from 8am - 10am. For more information please contact Marie Bradshaw 04 473 5554, or visit the schools website [www.st-marys-wellington.school.nz](http://www.st-marys-wellington.school.nz)

### 7-9 June and 1-3 November 2013, Rachel's Vineyard Retreats

A Retreat weekend for those whose lives have been touched by abortion. Information and support is available for men and women. All enquiries are strictly confidential. Contact Wendy Hill on 027 254 9222 or email [info@rachelsvineyard.org.nz](mailto:info@rachelsvineyard.org.nz) or visit [www.rachelsvineyard.org.nz](http://www.rachelsvineyard.org.nz)

### Traditional Latin Mass, Sundays, 12.30pm at St Mary of the Angels.

Contact: Neil Coup 021 896 924.

## Quality Te Aro Offices

5-7 Vivian Street, Wellington

Great location close to Cafe district  
Busy arterial road  
Air conditioned  
Car parking available

Office suites available at an affordable price. Semi-serviced suites (approx 18sqm) that are fully furnished. There is also a company floor area (approx 200sqm) with 5x partitioned offices, Board room and Meeting room. Shared kitchen and shower facilities. Car parking available in the building at an additional rate.

This is a must see for new businesses on a budget. Earthquake Engineering Evaluation IEP Report NBS 80 %

Contact by e-mail for further information: [mariabaldock@gmail.com](mailto:mariabaldock@gmail.com)

This newsletter is kindly sponsored by:

Michael Burrowes  
of Burrowes and Company  
Barristers and Solicitors  
phone (04) 473 7733

**BURROWES**  
and Company

Barristers and Solicitors

## GLOBUS RELIGIOUS TRAVEL

Faith-based travel is the perfect way to build community. Explore the stories, follow in the footsteps of spiritual leaders and discover the roots of our faith.

For more information call **0800 Globus** or speak with *St Mary of the Angels* parishioner **Tracey Driscoll**, Area Sales Manager, Globus family of brands.

**GLOBUS**

Sistine Chapel, Vatican City

## Please Support our Sponsors



Locally Owned Funeral Directors  
Caring in our Community

Is dealing with a  
**Locally Owned  
Funeral Director**  
important to you?

**Harbour City**  
FUNERAL HOME

Wellington  
56 Onepu Road, Kilbirnie  
Telephone 387-8301  
Email: [harbour@funeral-link.co.nz](mailto:harbour@funeral-link.co.nz)  
[www.harbourcityfunerals.co.nz](http://www.harbourcityfunerals.co.nz)

## WEST PLAZA HOTEL

LOCATION • COMFORT • STYLE

Weekend Special

**\$125**

One night's stay & cooked breakfast for two  
Available Friday, Saturday and Sunday  
Subject to availability

110 - 116 Wakefield Street, Wellington  
p 0800 731 444  
e [reservations@westplaza.co.nz](mailto:reservations@westplaza.co.nz)  
book now [westplaza.co.nz](http://westplaza.co.nz)



**Christian Supplies**

[www.christiansupplies.co.nz](http://www.christiansupplies.co.nz)

- See our monthly newsletter in 'The Angelus'  
- Freephone 0508 988 988 - Freefax 0508 988 989  
email: [order@pleroma.org.nz](mailto:order@pleroma.org.nz)

# The Angelus

St Mary of the Angels Parish

### Church and Presbytery:

**17 Boulcott Street,  
Wellington Central  
Telephone: 473 8074  
Parish website: [www.smoa.org.nz](http://www.smoa.org.nz)**

*St Mary of the Angels is a diverse community which seeks to praise and thank God in a place of calm and beauty and strives to be Christ alive in Central Wellington*

### Parish Priest

Fr Barry Scannell SM  
[smoapp@extra.co.nz](mailto:smoapp@extra.co.nz)

### Assistant Priest

Fr Tom O'Connor SM

### Adult Education

Fr Michael Young SM

### Pastoral Worker

Sr Frances Gibbs CSB

### Director of Music

Robert Oliver  
[robert.oliver@paradise.net.nz](mailto:robert.oliver@paradise.net.nz)

### Parish Accountant

Jeanette Temelo  
[smoamanager@extra.co.nz](mailto:smoamanager@extra.co.nz)

### Parish Office

[smoaoffice@extra.co.nz](mailto:smoaoffice@extra.co.nz)

### MASSES

Sunday 7am, 9am, 11am, 5pm

Monday to Friday 7:30am, 12:05pm,  
& 5:15pm

Saturday 11am

### EACH MONTH

4th Saturday 11am Mass with  
Sacrament of Anointing

### ADORATION

Monday to Friday 6:45am-7:30am

Friday 11am-noon

### RECONCILIATION

Monday to Thursday 11:30am-noon  
12:30pm-1:00pm  
4:30pm-5:00pm

Friday 11:00am-noon  
12:30pm-1:00pm  
4:30pm-5:00pm

Saturday 10:30am-11:00am  
4:00pm-5:00pm

## 6th Sunday of Easter, 5th May 2013 Year C

### Seismic Strengthening of St Mary of the Angels Church

The design work for the seismic strengthening of the Church is now underway. This is the fruit of nearly five year's work as our expert engineers, architects and building consultants grappled with the complexities associated with earthquake strengthening this beautiful Church. The challenge has been to design a solution to bring the building up to the current seismic code without comprising its integrity and beauty. I sincerely thank all those who have been engaged in that process.

The cost of this design work will be in the vicinity of \$300,000. We need generous benefactors to help us fund this commitment. If you are able to help or perhaps know of someone who would be prepared to assist please let me know.

The Finance Committee are facing significant challenges in funding the operation of our Parish Church. Our insurance premium has increased from \$16,000 two years ago to \$62,000 this year. We have asked the Archdiocese for support with this insurance premium, but as a Parish we will still have to find the majority of it.

Please keep these funding issues in your prayers. They present an enormous challenge to us as a Parish. However, this has been the story since the Church was first built in 1922. Somehow over the years the Parish has managed because of the generosity of so many parishioners and friends. Over the years, many benefactors have remembered St Mary of the Angels when writing their 'wills'. I pray that many more people will consider contributing towards the upkeep and maintenance of this beautiful Church when they too prepare their 'wills'. St Mary of the Angels Church is an 'icon' which must be preserved for future generations.

*Father Barry Scannell sm  
Parish Priest*

# INVEST IN YOUR FAITH

CATHOLIC DEVELOPMENT FUND of WELLINGTON



## This Week's Readings

**First Reading** Acts 15:1-2, 22-29  
*It has been decided by the Holy Spirit and ourselves not to burden you beyond what is essential.*

**Second Reading** Apoc 21:10-14, 22-23  
*He showed me the holy city coming down out of heaven.*

**Gospel Reading** John 14:23-29  
*The Holy Spirit will teach you everything and remind you of all I have said to you.*

## Next Week's Readings

**First Reading** Acts 1:1-11  
**Psalm** 46:2-3, 6-7, 8-9.  
**Second Reading** Eph 1:17-23  
**Gospel Reading** Luke 24:46-53

## Last Sunday's Collection

Total	\$5,004
Parish Expenses	\$3,553
Support of House	\$1,451



## 2012 - 2013 Tax Receipts

The 2012 - 2013 Planned Giving Tax receipts have been posted. If you have still not received your Tax Receipt please contact the Parish Office.

## Adult Education in the Faith Ministry

The next meeting will be on Wednesday 8th May from 5.30pm - 7.30pm in the Parish Hall.

**Theme:** Spirituality and Discipline(s).

**Session 1:** Introduction and Attention, Attentiveness and Study.

## Bach on Thursdays

All are invited to the final concert of the Bach lunchtime series at St Mary of the Angels, starting at 12.45pm. This week Penelope Evison (baroque flute) will play Bach's flute sonata in A - prelude and fugue in C 'Great'. All are most welcome.

## Mass has been offered for:

**Recently Deceased:** Fr Denis Mahony sm, Mons. Tim Hannigan, Joseph Churchward

**Anniversaries:** Jane Martin, David Butler, Stewart Dickson, Mark Fitzgerald

**Prayers for the Sick:** Jayson Edwardes, Barbara Ross, Ann Ross, Maureen McDonald, Dulcie Campbell, Helen Havasi, Patricia Smyth, Amanda Hagley, Miriam Menzies, Kathleen Phelan, Mary Egan, Oinah Macpherson, Joanna Veltman  
*Please remember in your prayers, these and the other sick of the Parish. If you know of anyone who is confined to their home or who needs a visit with Holy Communion, please contact Sister Frances at the Parish Office. Phone 473 8074.*



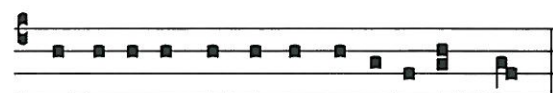
## Responsorial Psalm 66

**R. O God, let all the nations praise you!**

O God, be gracious and bless us  
 and let your face shed its light upon us.  
 So will your ways be known upon earth.  
 And all nations learn your saving help. **R**

Let the nations be glad and exult  
 for you rule the world with justice.  
 With fairness you rule the peoples,  
 you guide the nations on earth. **R**

Let the peoples praise you, O God;  
 let all the peoples praise you.  
 May God still give us his blessing  
 till the ends of the earth revere him. **R**



Confi-te- antur ti-bi popu-li omnes.

*Let all the people praise thee.*

## Offertory Hymn For 11am Mass

Number 86

Praise my soul the King of Heaven.

## The Sacrament of Confirmation

The Sacrament of Confirmation preparation Programme for Adults begins this Tuesday 7th May. There are four preparation sessions - Tuesday 7th, 14th, 21st and 28th May at 7.30pm in the Parish Hall. The Sacrament will be administered at 5.30pm Mass on 8th June at St Teresa's Parish, Karori for our Pastoral Area. If you would like to be confirmed please contact the Parish Office or complete one of the pink forms found at the back of the Church.

## Reflection: The Nicene Creed (10)

During this year of Faith we are looking at some of our Catholic beliefs. This is the tenth of our reflections on the Nicene Creed. "I believe in...one Lord Jesus Christ..." "He will come again in glory..."

### "...To judge the living and the dead..."

The second coming of Christ for the Last Judgement is what we Catholics refer to as the "parousia"; which is the Greek word for "presence" or "arrival." Jesus announced the judgement of the Last Day in his preaching (Mt 3:7-12). Then the conduct of each person and the secrets of hearts will be brought to light. (Mk 12:38-40; Lk 12:1-3.). It is then that deliberate unbelief in God will be condemned.

Our attitude towards our neighbour will reveal acceptance or refusal of grace and divine love. On the last day Jesus will say "In so far as you did this to one of the least of these brothers or sisters of mine, you did it to me." (Mt 25:40)

Christ is Lord of eternal life. Full right to pass definitive/final judgement on the works and hearts of people belongs to Jesus as redeemer of the world, because:

- He acquired this right by his cross.
- The father has given "all judgement to the Son." (Jn 5:22)
- Yet the Son did not come to judge, but to save and give life.
- By rejecting grace in this life we judge ourselves.
- We can condemn ourselves for all eternity by rejecting the Spirit of love. CCC 679

### "...and His kingdom will have no end."

Does the Kingdom of God have a beginning? Yes, for you and me it does... that's when we enter heaven. But for us, it will have no end. It's eternal.

### "We believe in the Holy Spirit, the Lord, the giver of life,..."



Notice that both the Son and the Holy Spirit are called "Lord." This is an Old Testament term for God. The Father, Son and Holy Spirit are the 3 persons of the One God.

The Holy Spirit is a "giver of life" in two distinct ways:

- Creation of man (Genesis 2:7)
- New life through the forgiveness of sins (John 20:21-23)

The Holy Spirit is also called "Lord." The Holy Spirit sustains our lives as Christians, illuminating us after the new birth of baptism.

*Father Tom O'Connor SM*

## SMAYACs Prayer Group

All young adults and the young at heart are invited to join in a time of prayer, readings and reflection. The group meet every Thursday at 6pm. During the winter months meetings will be in the Parish hall.

## Communio Discussion Group

The next Communio Discussion Group meeting will be on Sunday 12th May, 7.15pm in the Presbytery Boardroom. We will discuss an article by Gary Anderson - Adam, Eve and Us - and then look at what the Catechism of the Catholic Church says about Original Sin. Contact Mary or Leo Buchanan at 3878284 or leobuchanan@xtra.co.nz

## Clergy Healthcare Coordinator Needed

The Wellington Archdiocese is looking for a Clergy Healthcare Coordinator. For a job description contact the Archbishop's Office: 496 1766 j.dew@wn.catholic.org.nz Applications close 31 May 2013

## Reflection Group

All are invited to join the St Mary of the Angels Reflection Group who meet on Monday nights from 6-7.30pm in the Crypt. We read and reflect on the following Sundays readings and discuss how we can carry these messages into our lives. The group will run until Pentecost and all are welcome.

TO KEEP UP TO DATE WITH  
 EVENTS HAPPENING AROUND  
 THE WELLINGTON  
 ARCHDIOCESE VISIT THE  
 WEBSITE:  
**WWW.WN.CATHOLIC.ORG.NZ**

**LT**  
**McGuinness**  
 BUILDING CONTRACTORS  
 9 Francis Place,  
 PO Box 9639, Wellington  
 Phone (04) 384 8455 Fax (04) 801 8455  
 Email: ltm@mcguinness.co.nz

*Little Peckish*  
 Cafe  
*Feeling a little peckish?*  
 Dukes Arcade • Great food, coffee, service  
 Office catering available  
 Phone 499 7769 • Mobile 0274 461 650

**NW** **NEW WORLD**  
 Wellington City  
 Wellington's only  
 inner city supermarket  
 Open 7 days 7am - midnight  
 279 Wakefield Street. Ph 04 384 8054  
 www.newworld.co.nz/wellington-city

**CDF**  
 Catholic Development Fund of Wellington

Save with the CDF and you'll be helping the needy;  
 each year all of CDF's operating surplus goes to the  
 Archdiocese for social caring and pastoral services.

Saving with us helps your Archdiocese.  
 Call 0800 4 233 233 or visit [www.cdf.co.nz](http://www.cdf.co.nz)

