

For Your Diaries : 2013

1 May, 7:30pm, Seasonal Forum Lecture

All are invited to hear Dr Chris Duthie-Jung speak about Faith and Young People at Connolly Hall, Guildford Tce.

2-3 May Seasons 4 Growth

Seasons 4 Growth is a training course to learn how to companion children who are dealing with change, loss and grief. The course runs from 9am – 3pm each day. More info contact: Esther Saldanha 04 496 5182

5 May, 8pm, TCI Open Lecture, Sacred Heart Cathedral

All are invited to a lecture by Dr Megan McKenna - a U.S based Scripture storyteller, internationally recognised author, theologian, lecturer, retreat leader, spiritual director. There will be Sunday Eucharist at 7pm prior to the lecture and supper to follow in the Cathedral foyer.

17-19 May, Marriage Encounter Weekend

All couples are invited to the Marriage Encounter Weekend at the Magnificat Retreat Centre near Featherston. This special weekend provides an atmosphere for couples to concentrate on each other in privacy, free of the usual distractions and pressures of modern life. To book or for further information phone Francie or Neil on 0800 362 686

18 May, Marist College Mt Albert Auckland 85th Jubilee

Past pupils of Marist College, Auckland, are invited to the 85th Jubilee Celebration. Register online at www.eventfinda.co.nz or send \$40.00 to Ex-students association, 31 Alberton Ave, Mt Albert, Auckland 1025. Please visit the webpage www.maristcollege.school.nz/community/exstudents for more information.

7-9 June and 1-3 November 2013, Rachel's Vineyard Retreats

A Retreat weekend for those whose lives have been touched by abortion. Information and support is available for men and women. All enquiries are strictly confidential. Contact Wendy Hill on 027 254 9222 or email info@rachelsvineyard.org.nz or visit www.rachelsvineyard.org.nz

Traditional Latin Mass, Sundays, 12.30pm at St Mary of the Angels.

Contact: Neil Coup 021 896 924.

29 April, 7.30pm, Latin Mass in honour of St Peter Chanel, Patron Saint of New Zealand, at Futuna Chapel, Friend St., Karori, Wellington. Celebrant: Msgr. John Broadbent. Enquiries: Neil Coup, Ph: 021896924.

Quality Te Aro Offices

5-7 Vivian Street, Wellington

Great location close to Cafe district
Busy arterial road
Air conditioned
Car parking available

Office suites available at an affordable price. Semi-serviced suites (approx 18sqm) that are fully furnished. There is also a company floor area (approx 200sqm) with 5x partitioned offices, Board room and Meeting room. Shared kitchen and shower facilities. Car parking available in the building at an additional rate.

This is a must see for new businesses on a budget. Earthquake Engineering Evaluation IEP Report NBS 80 %

Contact by e-mail for further information: mariabaldock@gmail.com

This newsletter is kindly sponsored by:
Michael Burrowes
of Burrowes and Company
Barristers and Solicitors
phone (04) 473 7733

BURROWES
and Company

Barristers and Solicitors

GLOBUS RELIGIOUS TRAVEL

Faith-based travel is the perfect way to build community. Explore the stories, follow in the footsteps of spiritual leaders and discover the roots of our faith.

For more information call **0800 Globus** or speak with *St Mary of the Angels* parishioner **Tracey Driscoll**, Area Sales Manager, Globus family of brands.

GLOBUS

Sistine Chapel, Vatican City

Please Support our Sponsors



Locally Owned Funeral Directors
Caring in our Community

Is dealing with a
**Locally Owned
Funeral Director**
important to you?

Harbour City
FUNERAL HOME

Wellington
56 Onepu Road, Kilbirnie
Telephone 387-8301
Email: harbour@funeral-link.co.nz
www.harbourcityfunerals.co.nz

WEST PLAZA HOTEL

LOCATION • COMFORT • STYLE

Weekend Special

\$125

One night's stay & cooked breakfast for two
Available Friday, Saturday and Sunday
Subject to availability

110 – 116 Wakefield Street, Wellington
p 0800 731 444
e reservations@westplaza.co.nz
book now westplaza.co.nz



Christian Supplies

www.christiansupplies.co.nz

- See our monthly newsletter in 'The Angelus'
- Freephone 0508 988 988 - Freefax 0508 988 989
email: order@pleroma.org.nz

The Angelus

St Mary of the Angels Parish

Church and Presbytery:

17 Boulcott Street,

Wellington Central

Telephone: 473 8074

Parish website: www.smoa.org.nz

St Mary of the Angels is a diverse community which seeks to praise and thank God in a place of calm and beauty and strives to be Christ alive in Central Wellington

5th Sunday of Easter, 28th April 2013 Year C

The Holy Spirit at work in the Church

After the death of St Stephen, many of the disciples of Jesus fled from Jerusalem because of a fierce persecution. Some of them ended up in Antioch where a great number of people became believers and were converted to the Lord (Acts 11:21). St Barnabas was sent from Jerusalem, later joined by St Paul, to guide and support the rapidly expanding Church in Antioch. In the period following the resurrection and ascension of Jesus, there are many accounts of the power of the Holy Spirit at work in the early Church. For those who have eyes to see, something similar is taking place in our own time. On Easter Sunday, five weeks ago, in the Diocese of Hong Kong, 3560 adults were baptized into the Catholic faith after 18 months of instruction in the faith. Let us pray for the Church in China, and also for those from our own RCLIA program who were baptized at Easter as they continue their post-baptismal instruction.

Father Tim Costello sm

Theology on Tap

Each month the St Mary of the Angels Young Adults Group organise Theology on Tap - a social opportunity to come together and discuss aspects of our Faith and to be inspired.

All are invited to the talk tonight, Sunday 28 April in the Parish Hall following the 5pm Mass. This month Gordon Copeland, a former MP and father of five adult children will talk about "Steps in Strengthening your relationship with God." All are most welcome.

Parish Priest

Fr Barry Scannell SM

smoapp@extra.co.nz

Assistant Priest

Fr Tom O'Connor SM

Adult Education

Fr Michael Young SM

Pastoral Worker

Sr Frances Gibbs CSB

Director of Music

Robert Oliver

robert.oliver@paradise.net.nz

Parish Accountant

Jeanette Temelo

smoamanager@extra.co.nz

Parish Office

smoaoffice@extra.co.nz

MASSES

Sunday 7am, 9am, 11am, 5pm

Monday to Friday 7:30am, 12:05pm, & 5:15pm

Saturday 11am

EACH MONTH

4th Saturday 11am Mass with Sacrament of Anointing

ADORATION

Monday to Friday 6:45am-7:30am

Friday 11am-noon

RECONCILIATION

Monday to Thursday 11:30am-noon
12:30pm-1:00pm
4:30pm-5:00pm

Friday 11:00am-noon
12:30pm-1:00pm
4:30pm-5:00pm

Saturday 10:30am-11:00am
4:00pm-5:00pm

INVEST IN YOUR FAITH

CATHOLIC DEVELOPMENT FUND of WELLINGTON

This Week's Readings

First Reading Acts 14:21-27
They assembled the church and gave an account of all that God had done with them.

Second Reading Apoc 21:1-5
He will wipe away all the tears from their eyes.

Gospel Reading John 13:31-35
I give you a new commandment: love one another.

Next Week's Readings

First Reading Acts 15:1-2, 22-29
Psalm 66:2-3, 5-6, 8.
Second Reading Apoc 21:10-14, 22-23
Gospel Reading John 14:23-29

Last Sunday's Collection

Total	\$4,671
Parish Expenses	\$3,316
Support of House	\$1,355



Planned Giving Tax Receipts

Tax receipts were posted this week. If you have not received your tax receipt by Sunday 5th May please contact the Parish Office.

Bach on Thursdays

All are invited to a series of Thursday lunchtime concerts at St Mary of the Angels, starting at 12.45pm, featuring the music of J.S. Bach. This week Douglas Mews will play the 6th Organ Sonata, prelude and fugue in G 'Great'. The concert series will run until May 9th.

The Sacrament of Confirmation

The Sacrament of Confirmation preparation Programme for Adults begins on Tuesday 7th May. There are four preparation sessions - Tuesday 7th, 14th, 21st and 28th May at 7.30pm in the Parish Hall. The Sacrament will be administered at 5.30pm Mass on 8th June at St Teresa's Parish, Karori for our Pastoral Area. If you would like to be confirmed please contact the Parish Office or complete one of the pink forms found at the back of the Church.

Mass has been offered for:

Recently Deceased:

Anniversaries: John Keating, Ian Jones, Czeslaw Tomaszuk, Jean Auld, David Butler, Stewart Dickson, Mark Fitzgerald

Prayers for the Sick:

Joanna Veltman, Barbara Ross, Ann Ross, Maureen McDonald, Dulcie Campbell, Helen Havasi, Patricia Smyth, Amanda Hagley, Miriam Menzies, Kathleen Phelan, Mary Egan, Oinah Macpherson
Please remember in your prayers, these and the other sick of the Parish. If you know of anyone who is confined to their home or who needs a visit with Holy Communion, please contact Sister Frances at the Parish Office. Phone 473 8074.



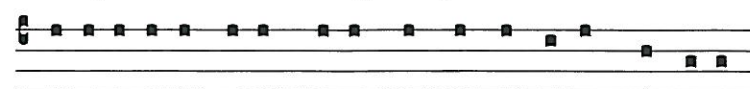
Responsorial Psalm 144

R. I will praise your name for ever, my king and my God.

The Lord is kind and full of compassion, slow to anger, abounding in love. How good is the Lord to all, compassionate to all his creatures. **R**

All your creatures shall thank you, O Lord, and your friends shall repeat their blessing. They shall speak of the glory of your reign and declare your might, O God, to make known to men your mighty deeds and the glorious splendour of your reign. **R**

Yours is an everlasting kingdom; your rule lasts from age to age. **R**



Exaltabo te De-us me-us Rex, in saecu-lum saecu-li.

I will extol thee O God my King, for ever and ever.

Offertory Hymn For 11am Mass

Number 100

Praise the Lord! Ye heavens adore Him.

Adult Education in the Faith Ministry

The next meeting will be on Wednesday 1st May from 5.30pm - 7.30pm in the Parish Hall.

Theme: Spirituality and Liturgy and Devotion.

Session 6: Popular Devotions and Music and Architecture

Reflection: The Nicene Creed (9)

During this year of Faith we are looking at some of our Catholic beliefs. This is the ninth of our reflections on the Nicene Creed. "I believe in...one Lord Jesus Christ..."

"He ascended into heaven..."

In ancient science, heaven was thought to be situated above the sky dome (people in Jesus day and earlier, noted that the sky looks like a dome and that one could pierce through, if one could get that high). So in the Scriptures, Jesus is said to ascend to heaven. Whatever happened that day or how it happened, Luke had to express the event in his own scientific paradigm/model, so he said Jesus "went up" to heaven.

Christ's ascension marks the definitive/final entrance of Jesus' humanity into God's heavenly domain/realm from where he will come again (cf. Acts 1:11)

"...and Is Seated at the Right Hand of the Father"

Again, we are limited by our language and experience of space/area. Jesus is at the right hand of the Father. This means He is sharing authority with the Father, and not literally sitting next to the Father. However Christ is bodily present with the Father.

"He will come again in glory..."

Christ the Lord already reigns through the Church, but all things of this world are not yet subjected to him. The reign of Christ is still under attack by evil powers even though they have been defeated definitively by Christ's death and resurrection. The triumph of Christ's kingdom will not come without one last assault by the powers of evil (Matthew 24:4-14). Christ's kingdom will not be destroyed, despite all of humanity's efforts. The Church will enter the glory of the kingdom only through this final trial. God's victory over the final unleashing of evil will be total and complete and will culminate in the Last Judgement.



At the end of the world Jesus will come again to judge the living and dead. We know this will happen, but we do not know when. The early church thought the Second Coming was not far away.

Father Tom O'Connor SM

SMAYACs Prayer Group

All young adults and the young at heart are invited to join in a time of prayer, readings and reflection every Thursday at 6pm in St Mary of the Angels Church.

Communio Discussion Group

The next Communio Discussion Group meeting will be on Sunday 12th May, 7.15pm in the Presbytery Boardroom. We will discuss an article by Gary Anderson - Adam, Eve and Us - and then look at what the Catechism of the Catholic Church says about Original Sin. Contact Mary or Leo Buchanan at 3878284 or leobuchanan@xtra.co.nz

Clergy Healthcare Coordinator Needed

The Wellington Archdiocese is looking for a Clergy Healthcare Coordinator. For a job description contact the Archbishop's Office: 496 1766 j.dew@wn.catholic.org.nz Applications close 31 May 2013

Reflection Group

All are invited to join the St Mary of the Angels Reflection Group who meet on Monday nights from 6-7.30pm in the Crypt. We read and reflect on the following Sundays readings and discuss how we can carry these messages into our lives. The group will run until Pentecost and all are welcome.



LT McGuinness
BUILDING CONTRACTORS
9 Francis Place,
PO Box 9639, Wellington
Phone (04) 384 8455 Fax (04) 801 8455
Email: ltm@mcguinness.co.nz

Little Peckish
Cafe
Feeling a little peckish?
Dukes Arcade · Great food, coffee, service
Office catering available
Phone 499 7769 · Mobile 0274 461 650

NEW WORLD
Wellington City
Wellington's only
inner city supermarket
Open 7 days 7am - midnight
279 Wakefield Street. Ph 04 384 8054
www.newworld.co.nz/wellington-city

CDF
Catholic Development Fund of Wellington

Save with the CDF and you'll be helping the needy; each year all of CDF's operating surplus goes to the Archdiocese for social caring and pastoral services.

Saving with us helps your Archdiocese.
Call 0800 4 233 233 or visit www.cdf.co.nz

