

## For Your Diaries : 2013

### 12&21 February, Adult Faith Education

The Catholic Institute is offering two courses this month:

*Church History: The Middle Ages* – a chance to meet those who lived, loved, suffered, fought, prayed & served God in the Church of the Middle Ages. Begins Tues 12 Feb 5.30pm.

*Introduction to Liturgy* - A chance to get to grips with a Catholic take on worship. Come and explore the thinking behind what we do in our liturgical practice. Begins 21 Feb 5.30pm.

For more info and enrolment ph 04 974 5384 or email [wgtn@tci.ac.nz](mailto:wgtn@tci.ac.nz)

### 16 February, 11am-3pm Saint Anthony's Parish & School Bazaar

Come and join us for a day full of good food, fun and entertainment at Ludlam St, Seatoun.

### 19 February, Healing Service

There will be a Healing Service led by Fr. John Rea, at St. Bernadette's Church, 194 Naenae Rd, Naenae at 7.30pm. Contact Mary Boyle on 5676 316

### 22-23 February, Hope and Joy Conference

Where can we find hope and joy in this Year of Faith? Come and explore the possibilities of living anew the joy and hope of the Second Vatican Council at St Patrick's College, Kilbirnie. For more information and to register visit [www.yearoffaith.org.nz](http://www.yearoffaith.org.nz)

### 22-24 February, Rachel's Vineyard Retreat

This is a weekend Retreat of spiritual and emotional healing for those who have been touched by abortion. For more information visit [www.rachelsvineyard.org.nz](http://www.rachelsvineyard.org.nz) All enquiries strictly confidential.

Contact Wendy Hill on 027 254 9222 or [info@rachelsvineyard.org.nz](mailto:info@rachelsvineyard.org.nz)

### 2 March, 8.30am, Workshop for Special Ministers and Readers

There will be a workshop for Special Ministers of the Eucharist and Readers in the Parish Hall. The morning will be lead by Fr David Kennerley sm. Please note the change of date.

### 15-17 March, Marriage Retreat Weekend

The next Marriage retreat weekend will be held at the Magnificat Retreat Centre near Featherston. For further information or to book please phone Francie or Neil on 0800 362 686.

### Traditional Latin Mass, Sundays, 12.30pm at St Mary of the Angels.

Contact: Neil Coup 021 896 924.

### Quality Te Aro Offices

5-7 Vivian Street, Wellington

Great location close to Cafe district  
Busy arterial road  
Air conditioned  
Car parking available

Office suites available at an affordable price. Semi-serviced suites (approx 18sqm) that are fully furnished. There is also a company floor area (approx 200sqm) with 5x partitioned offices, Board room and Meeting room. Shared kitchen and shower facilities. Car parking available in the building at an additional rate.

This is a must see for new businesses on a budget.

Contact by e-mail for further information: [mariabaldock@gmail.com](mailto:mariabaldock@gmail.com)

This newsletter is kindly sponsored by:

Michael Burrowes  
of Burrowes and Company  
Barristers and Solicitors  
phone (04) 473 7733

**BURROWES**  
and Company

Barristers and Solicitors



**A1 Auto Electrical Limited**

17 -19 Webb Street, Wellington  
Phone 384 2215

All Electrical Repairs  
ABS and Air Bag Faults

## Please Support our Sponsors



Locally Owned Funeral Directors  
Caring in our Community

Is dealing with a  
**Locally Owned  
Funeral Director**  
important to you?



Wellington  
56 Onepu Road, Kilbirnie  
Telephone 387-8301  
Email: [harbour@funeral-link.co.nz](mailto:harbour@funeral-link.co.nz)  
[www.harbourcityfunerals.co.nz](http://www.harbourcityfunerals.co.nz)

### WEST PLAZA HOTEL

LOCATION • COMFORT • STYLE

#### Weekend Special

**\$125**

One night's stay & cooked breakfast for two

Available Friday, Saturday and Sunday  
Subject to availability

110 – 116 Wakefield Street, Wellington  
p 0800 731 444  
e [reservations@westplaza.co.nz](mailto:reservations@westplaza.co.nz)  
book now [westplaza.co.nz](http://westplaza.co.nz)



Bullement.Fortune Architects Ltd

Proud to be architects for the interior and  
exterior refurbishment of St Mary of the Angels

Registered Architect: Denis Fortune

3 Francis Place Te Aro  
WELLINGTON  
Ph: 04 385 0286

Email: [bullement.fortune@xtra.co.nz](mailto:bullement.fortune@xtra.co.nz)



**Christian Supplies**

[www.christiansupplies.co.nz](http://www.christiansupplies.co.nz)

- See our monthly newsletter in 'The Angelus'  
- Freephone 0508 988 988 - Freefax 0508 988 989  
email: [order@pleroma.org.nz](mailto:order@pleroma.org.nz)

# The Angelus

St Mary of the Angels Parish

### Church and Presbytery:

17 Boulcott Street,

Wellington Central

Telephone: 473 8074

Parish website: [www.smoa.org.nz](http://www.smoa.org.nz)

*St Mary of the Angels is a diverse community which seeks to praise and thank God in a place of calm and beauty and strives to be Christ alive in Central Wellington*

### Parish Priest

Fr Barry Scannell SM

[smoapp@xtra.co.nz](mailto:smoapp@xtra.co.nz)

### Assistant Priest

Fr Tom O'Connor SM

### Adult Education

Fr Michael Young SM

### Pastoral Worker

Sr Frances Gibbs CSB

### Director of Music

Robert Oliver

[robert.oliver@paradise.net.nz](mailto:robert.oliver@paradise.net.nz)

### Parish Accountant

Jeanette Temelo

[smoamanager@xtra.co.nz](mailto:smoamanager@xtra.co.nz)

### Parish Office

[smoaoffice@xtra.co.nz](mailto:smoaoffice@xtra.co.nz)

### MASSES

Sunday 7am, 9am, 11am, 5pm

Monday to Friday 7:30am, 12:05pm,  
& 5:15pm

Saturday 11am

### EACH MONTH

4th Saturday 11am Mass with  
Sacrament of Anointing

### ADORATION

Monday to Friday 6:45am-7:30am

Friday 11am-noon

### RECONCILIATION

Monday to Thursday 11:30am-noon  
12:30pm-1:00pm  
4:30pm-5:00pm

Friday 11:00am-noon  
12:30pm-1:00pm  
4:30pm-5:00pm

Saturday 10:30am-11:00am  
4:00pm-5:00pm

## Fifth Sunday in Ordinary Time, 10 February 2013 Year C

### Ash Wednesday

This coming Wednesday 13th February we begin our Lenten Observance with the sign of the Cross on our forehead with Ashes. This reminds us that we are about to enter a time of penance, fasting and prayer for the next forty days to prepare for the Lord's suffering, death and resurrection at Easter. Ashes will be distributed during our three Masses: 7.30am, 12.05pm and 5.15pm.

### Caritas Lenten Appeal Envelopes

The Lenten Appeal is an opportunity for all Catholics to participate in making the world a better place - not only overseas but within our own community. We are asked to make a 'preferential option for the poor', meaning that we should imitate God in being especially concerned about the poor and vulnerable. We are all asked to support the work of Caritas by making a donation through their Lenten appeal envelopes. These are available on the tables at the Church entrances. Please give generously this Lent.

### Thank You

Thank you to those who attended the Archdiocese Waitangi Day Mass at St Mary of the Angels on Wednesday. Thank you to those who brought a plate of food for the shared morning tea with our visitors from the Maori communities of Te Ngakau Tapu from Porirua, and Te Kainga from Kilbirnie, and to those who helped serve our guests. Finally, a special thank you to Robert Oliver and the choir for providing such beautiful music for the Mass.

### The Door is Open for You

On the tables at the side door and back of the Church there is a leaflet to help us prepare for the sacrament of Reconciliation during Lent. As you know, in addition to the daily times for reconciliation in our Church, the Archbishop has asked that during the season of Lent every Church in the Archdiocese be open on a Wednesday evening from 7.30pm until 8.30pm for the celebration of the sacrament This will begin on Ash Wednesday.

Father Barry Scannell s.m.

Parish Priest

# INVEST IN YOUR FAITH

CATHOLIC DEVELOPMENT FUND of WELLINGTON



## This Week's Readings

**First Reading** Isaiah 6:1-8  
*Here am I! Send me.*

**Second Reading** 1 Corinthians 15:1-11  
*I preach what they preach, and this is what you believe.*

**Gospel Reading** Luke 5:1-11  
*They left everything and followed him.*

## Next Week's Readings

**First Reading** Jeremiah 17:5-8  
**Psalm** 1  
**Second Reading** 1 Corinthians 15:12, 16-20  
**Gospel Reading** Luke 6:17, 20-26

## Last Sunday's Collection

Total	\$5,067
Parish Expenses	\$3,598
Support of House	\$1,469



## Adult Education in the Faith Ministry

The next session will be on Wednesday 13 February 2013.

**Time:** 5.30pm - 7.30pm **Venue:** Parish Hall

**Theme:** Spirituality and Prayer

**Session 3:** Methods of Prayer (Part 1) – (A) Mental Prayer and Vocal Prayer; (B) Recollection and Hesychasm.

## Communio Study Group & Year of Faith

A programme has been developed. The first meeting will be in the Presbytery boardroom at 7.15pm on Sunday 10 February. The article for discussion is: **'The significance of Vatican II'** by Cardinal Francis George.

Contact Mary or Leo Buchanan for copy of article on 387 8284 or at leobuchanan@xtra.co.nz

## Mass has been offered for:

**Anniversaries:** Brendan O'Connor, Monica O'Grady, Ross Meads, Keith Clapham, Grace Smith.

**Prayers for the Sick:** Arthur Gibbs, Margaret Hyland, Joanna Veltman, Barbara Ross, Ann Ross, Maureen McDonald, Dulcie Campbell, Helen Havasi, Patricia Smyth.



*Please remember in your prayers, these and the other sick of the Parish. If you know of anyone who is confined to their home or who needs a visit with Holy Communion, please contact Sister Frances at the Parish Office. Phone 473 8074.*

## Responsorial Psalm 137

**R. In the sight of the angels I will sing your praises, Lord.**

I thank you, Lord, with all my heart,  
you have heard the words of my mouth.  
Before the angels I will bless you.  
I will adore before your holy temple. **R**

I thank you for your faithfulness and love  
which excel all we ever knew of you.  
On the day I called, you answered;  
you increased the strength of my soul. **R**

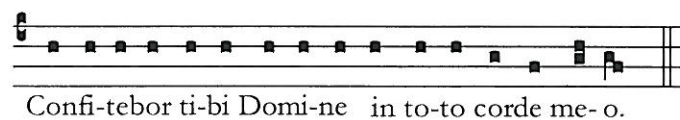
All earth's kings shall thank you  
when they hear the words of your mouth.  
They shall sing of the Lord's ways:  
'How great is the glory of the Lord!' **R**

You stretch out your hand and save me,  
your hand will do all things for me.  
Your love, O Lord, is eternal,  
discard not the work of your hands. **R**

## Offertory Hymn For 11am Mass

No : 195

'Holy holy holy'



## Dove Catholic Fellowship

Dove Catholic Fellowship for women invites all women to their first meeting of the year Saturday 16 February 1.30 – 3.30pm at Connolly Hall (off Hill St) Thorndon. Speaker: Rachel Blackaby sharing her testimony - from darkness into His light.  
Enquiries Sandra 475 5541, or at www.dove.org.nz

## Pastoral Area Sacramental Programme

Enrolments are now being accepted for the Pastoral Area Sacramental Programme which begins on Thursday 28th February. The three sacraments of Reconciliation, Confirmation and First Holy Communion are being offered to children in Year 4 and above. The preparation for these sacraments is co-ordinated by three Parishes in our Pastoral Area; St Thomas Moore Wilton, Sacred Heart Thorndon, and ourselves, St Mary of the Angels.

Enrolment forms are on the tables at the back and side doors of the Church. Please complete these and give them to one of the priests or bring them to the Parish Office. Enrolments close on 23rd February. For further information please contact Bede Clarke on 478 4202

## Caritas Lenten Reflection Group

**"Follow faithfully, tell courageously, live joyfully"**

As people of God, we are called to share the love that God has given us with our neighbours. As we hear this call, we already hold in our hearts examples of people who have gone before us, walking the same path of faith. Lent is a time of prayer, fasting and almsgiving. During Lent we have the opportunity to turn back to God, to re-examine our faith and our deepest values, and to consider what we want to change in our lives.

St Mary of the Angels is starting a Reflection Group which will meet in the Crypt (underneath the Church) every Monday evening at 6pm during Lent, starting on the 11th of February and running until the 18th of March. Resources are provided by Caritas so all you need to bring is your willingness to participate in this spiritual practice, and your Bible if you wish.

If you have any queries then please contact Monica on 021 94 9988 or email the Parish Office: smoaoffice@xtra.co.nz

*Monica O'Connell, Social Justice Coordinator*

## Organ Recital

The Maxwell Fernie Trust Organist Christopher Hainsworth will perform 'Organ Proms', a varied programme of organ music, on our marvellous Maxwell Fernie Organ on the 17th of February at 7.30pm. Proceeds will go to the Maxwell Fernie Trust. Chris, who trained in Wellington under Maxwell Fernie, is based in France, where he is the organist at Beziers Cathedral. He is touring New Zealand this month giving recitals.

## Situation Vacant

Pregnancy Counselling Services (a Charitable Trust) is looking for a National Administrator based in Wellington. This is a full-time position that encompasses general office management, fundraising skills and a willingness to comply with the special character of the organisation. If you are interested please contact Cynthia Piper 0800 217 411.

## SMAYACs Prayer Group

**When:** Thursdays @ 6pm

**Where:** St Mary of the Angels Church.

All are welcome to join this group of young adults and the young at heart to pray, read and reflect on the Scriptures.

This is a great way to strengthen your prayer life and also build relationships and community. Prayer is often around 40 minutes and we usually get together afterwards for a social catch up. For more information contact smayacs@gmail.com.

## Young Angel Voices

Young Angel Voices has its first session of the year on Thursday, the 14th of February. Thereafter practices will take place every Thursday in the Parish Hall from 4.30 to 5.30.

**Follow faithfully, tell courageously, live joyfully**

*Caritas Lenten Reflection Programme 2013*

"Dear brothers and sisters, in this season of Lent, as we prepare to celebrate the event of the Cross and the Resurrection- in which the love of God redeemed the world and shone its light upon history- I express my wish that all of you may spend this precious time rekindling your faith in Jesus Christ, so as to enter with him into the dynamic of love for the Father and for every brother and sister that we encounter in our lives". (Pope Benedict XVI: *Lenten Message*, 2013)

Please join us on Monday the 11th of February 2013 in the Crypt underneath the Church for a Lenten Prayer Group from 6pm-7.30pm.  
ALL WELCOME

**LT McGuinness**  
BUILDING CONTRACTORS  
9 Francis Place,  
PO Box 9639, Wellington  
Phone (04) 384 8455 Fax (04) 801 8455  
Email: ltm@mcguinness.co.nz

**Little Peckish**  
Cafe  
Feeling a little peckish?  
Dukes Arcade - Great food, coffee, service  
Office catering available  
Phone 499 7769 - Mobile 0274 461 650

**NEW WORLD**  
WELLINGTON CITY  
279 WAKEFIELD ST.  
OPEN 7 DAYS | 7AM - MIDNIGHT  
WWW.WGTNCITYNEWWORLD.CO.NZ



**Save with the CDF and you'll be helping the needy; each year all of CDF's operating surplus goes to the Archdiocese for social caring and pastoral services.**

**Saving with us helps your Archdiocese.**  
Call 0800 4 233 233 or visit [www.cdf.co.nz](http://www.cdf.co.nz)

