

For Your Diaries : 2012- 2013

22-23 February 2013, Hope and Joy Conference

Where can we find hope and joy in this Year of Faith? Come and explore the possibilities of living anew the joy and hope of the Second Vatican Council at St Patrick's College, Kilbirnie.

For more information and to register visit www.yearoffaith.org.nz

2-24 February 2013, Rachel's Vineyard Retreat

This is a weekend Retreat of spiritual and emotional healing for those who have been touched by abortion. For more information visit www.rachelsvineyard.org.nz All enquiries strictly confidential. Contact Wendy Hill on 027 254 9222 or info@rachelsvineyard.org.nz

2 March 2013, 8.30am, Workshop for Special Ministries and Readers

There will be a workshop for Special Ministers of the Eucharist and Readers. The morning will be lead by Fr David Kennerley.

Please note the change of date.

1st & 3rd Wednesdays, 7.15pm-9.15pm, Wildflowers

Is your abortion experience troubling you? This group meets to share and reflect and be with others who have had a similar experience. For more info contact Wendy Hill 027 254 9222 or email info@greenstonedoor.co.nz

Traditional Latin Mass

Sundays, 12.30pm at St Mary of the Angels. Mass will also be held on Christmas day at 12:30pm by Msgr. Charles Cooper. Latin masses will continue throughout January. Contact: Neil Coup 021 896 924.

Mass and Reconciliation Timetable for January

Daily until Wellington Anniversary Weekend

Each weekday from Thursday 3rd January

- Reconciliation: 11.30am - 12noon
- Mass: 12.05pm

Saturdays 5th, 12th & 19th January

- Reconciliation: 10.30am - 11am
- Mass: 11am

Sundays 6th, 13th & 20th January

- Mass Times: 7am, 9am, 11am & 5pm

Wellington Anniversary Day (Mon 21st January)

- Mass: 9am

Normal
timetable
resumes
after
anniversary
weekend.

Quality Te Aro Offices

5-7 Vivian Street, Wellington

Great location close to Cafe district
Busy arterial road
Air conditioned
Car parking available

Office suites available at an affordable price. Semi-serviced suites (approx 18sqm) that are fully furnished. There is also a company floor area (approx 200sqm) with 5x partitioned offices, Board room and Meeting room. Shared kitchen and shower facilities. Car parking available in the building at an additional rate.

This is a must see for new businesses on a budget.

Contact by e-mail for further information: mariabaldock@gmail.com

This newsletter is kindly sponsored by:

Michael Burrowes
of Burrowes and Company
Barristers and Solicitors
phone (04) 473 7733

BURROWES
and Company

Barristers and Solicitors



A1 Auto Electrical Limited

17 -19 Webb Street, Wellington
Phone 384 2215

All Electrical Repairs
ABS and Air Bag Faults

Please Support our Sponsors



Locally Owned Funeral Directors
Caring in our Community

Is dealing with a
**Locally Owned
Funeral Director**
important to you?

Harbour City

"... FUNERAL HOME ..."

Wellington
56 Onepu Road, Kilbirnie
Telephone 387-8301
Email: harbour@funeral-link.co.nz
www.harbourcityfunerals.co.nz

WEST PLAZA HOTEL

LOCATION • COMFORT • STYLE

Weekend Special

\$125

One night's stay & cooked breakfast for two

Available Friday, Saturday and Sunday
Subject to availability

110 - 116 Wakefield Street, Wellington
p 0800 731 444
e reservations@westplaza.co.nz
book now westplaza.co.nz



Bullement.Fortune Architects Ltd

Proud to be architects for the interior and
exterior refurbishment of St Mary of the Angels

Registered Architect: Denis Fortune

3 Francis Place Te Aro
WELLINGTON
Ph: 04 385 0286

Email: bullement.fortune@xtra.co.nz



Christian Supplies

www.christiansupplies.co.nz

- See our monthly newsletter in 'The Angelus'
- Freephone 0508 988 988 - Freefax 0508 988 989
email: order@pleroma.org.nz

The Angelus

St Mary of the Angels Parish

Church and Presbytery:

17 Boulcott Street,
Wellington Central

Telephone: 473 8074

Parish website: www.smoa.org.nz

St Mary of the Angels is a diverse community which seeks to praise and thank God in a place of calm and beauty and strives to be Christ alive in Central Wellington
Fourth Sunday of Advent, 23 December 2012 Year C

Parish Priest

Fr Barry Scannell SM
smoapp@xtra.co.nz

Assistant Priest

Fr Tom O'Connor SM

Adult Education

Fr Michael Young SM

Pastoral Worker

Sr Frances Gibbs CSB

Director of Music

Robert Oliver
robert.oliver@paradise.net.nz

Parish Accountant

Jeanette Temelo
smoamanager@xtra.co.nz

Parish Office

smoaooffice@xtra.co.nz

MASSES

Sunday 7am, 9am, 11am, 5pm

Monday to Friday 7:30am, 12:05pm,
& 5:15pm

Saturday 11am

EACH MONTH

4th Saturday 11am Mass with
Sacrament of Anointing

ADORATION

Monday to Friday 6:45am-7:30am

Friday 11am-noon

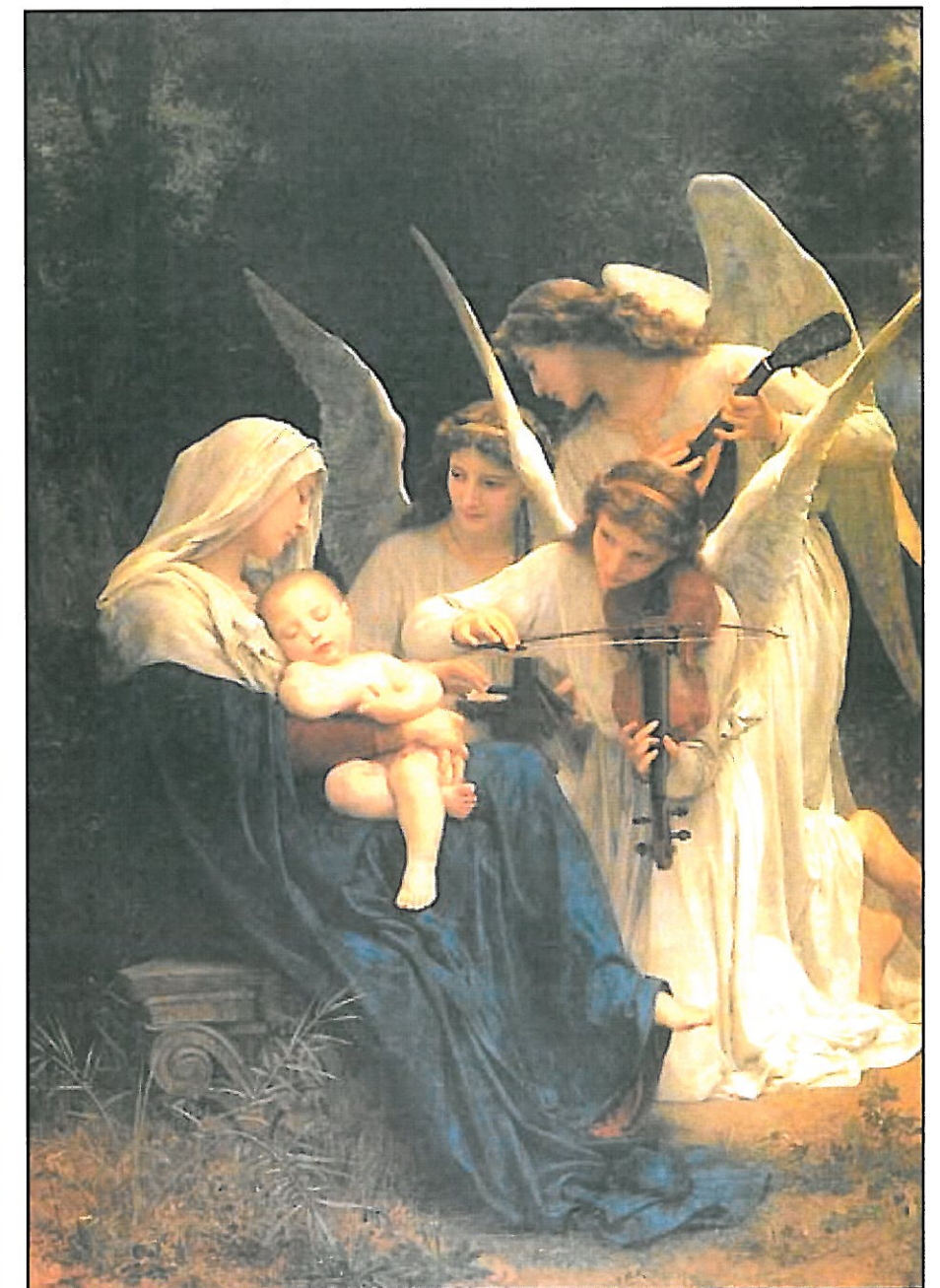
RECONCILIATION

Monday to Thursday 11:30am-noon
12:30pm-1:00pm

Friday 11:00am-noon
12:30pm-1:00pm

4:30pm-5:00pm

Saturday 10:30am-11:00am
4:00pm-5:00pm



Three angels playing music for Mother Mary and baby Jesus by Bouguereau

INVEST IN YOUR FAITH

CATHOLIC DEVELOPMENT FUND of WELLINGTON

This Week's Readings

First Reading Micah 5:1-4
Out of you will be born the one who is to rule over Israel.

Second Reading Hebrews 10:5-10
I am coming to do your will.

Gospel Reading Luke 1:39-44
Why should it happen that I am honoured with a visit from the mother of my Lord?

Next Week's Readings

First Reading Sirach 3:2-6, 12-14
Psalm 83
Second Reading Colossians 3:12-21
Gospel Reading Luke 2:41-52

Last Sunday's Collection

Total	\$4,755
Parish Expenses	\$3,376
Support of House	\$1,379



Christmas Gifts for St Vincent de Paul

Christmas gifts may be placed under the Christmas tree at any time leading up to Christmas, for collection by the St Vincent de Paul Society.

St Mary of the Angel's Christmas Cards

The beautiful St Mary of the Angels Christmas Cards depicting the Nativity Window in the Church will be on sale again this Sunday. The cards will be available on the table outside the main doors of the Church.

The cost is \$15 for a dozen cards and envelopes.

Mass has been offered for:

Recently Deceased: Fr George Duggan. sm, Joyce Canderle.

Anniversaries: Diana Bartram, James Glover, Paul Giles, Frances Carlsen, Margherita Ray, Magdolona Ladvensky.

Prayers for the Sick: Miriam Menzies, Arthur Gibbs, Barbara Ross, Ann Ross, Kathleen Phelan, Marjorie Feitsma, Phil Busby, Mary Egan, Dulcie Campbell, Oinah Macpherson, Helen Havasi, Maureen McDonald, Patricia Smyth, Catherine Symes; Pat Keane, James O'Connell, Catherine Jade van Zijl.



Please remember in your prayers, these and the other sick of the Parish. If you know of anyone who is confined to their home or who needs a visit with Holy Communion, please contact Sister Frances at the Parish Office. Phone 473 8074.

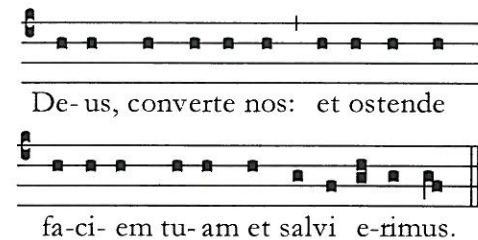
Responsorial Psalm 79

**R. Lord, make us turn to you;
let us see your face and we shall be saved**

O shepherd of Israel, hear us,
shine forth from your cherubim throne.
O Lord, rouse up your might,
O Lord, come to our help. **R**

God of hosts, turn again, we implore,
look down from heaven and see.
Visit this vine and protect it,
the vine your right hand has planted. **R**

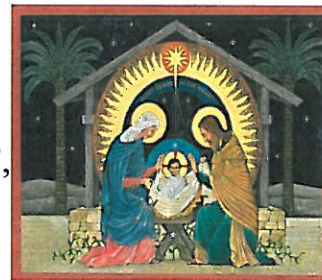
May your hand be on the man you have chosen,
the man you have given your strength.
And we shall never forsake you again:
give us life that we may call upon your name. **R**



Offertory Hymn For 11am Mass

No 238:

'O come, o come, Emmanuel',
verses 1,4,5 & 6.



Thank You

When I look back over the past year much has been achieved in the Parish. There are so many people to thank for their generosity and support in helping to ensure that our Parish community and the beautiful Church of St Mary of the Angels continues to be 'as oasis in the middle of a busy city'.

I wish to thank most sincerely our various Parish Committee's who quietly go about their work to ensure that everything for which they are responsible runs smoothly. Whether it be Liturgy, Parish Council, Finance or Maintenance Committees their valuable work and commitment to the Parish is so important.

There are parishioners who generously contribute each day in ways that are hidden and unknown. Those who so diligently wash our Altar Linen each week, prepare the morning tea after the 9am Mass, clean the Church in preparation for Christmas, those who have spent so much time ensuring that the grounds and gardens are looking so beautiful, those who count the weekly collection, those who assemble the beautiful crib and many others.

One of the 'jewels in the crown' at St Mary of the Angels is our wonderful tradition of music. I sincerely thank the 11am Choir, the 5pm Music Group, our Young Angels Voices and the 9am Music Group. You help us to lift our voices and ensure that our liturgies are of the highest standard.

On a special note I wish to sincerely thank Gerard McGreevy who has been the organist at the 9am mass for over 20 years. Gerard is retiring from this role at Christmas and on behalf of the whole Parish I sincerely thank him for his generous contribution to our Parish. May God bless you Gerard and I hope that from time to time you will come back and share your great musical gifts with us.

I know that in thanking people I will always forget someone. Please accept my sincere thanks to all of you who have contributed in any way to Parish life this year. On behalf of the Parish team may God bless you abundantly this Christmas and I pray that this is a very happy time for you and your families.

Father Barry Scannell s.m.
Parish Priest

Fundraising Concert

We are very grateful to Andrew Joyce, Julia Joyce and Anna Van Der Zee for the magnificent 'Goldberg Variations' concert in the Church on 12 December. This concert was a fundraising event for the preliminary design drawings for the seismic upgrade of the Church. A total of \$2,345 was raised.

This is the first of many fundraising events over the next few months to achieve our target of \$250,000.

Hope and Joy – Vatican 2day:

Vatican 2day is organized by the Archdiocese of Wellington. Keynote speakers include: Sister Helen Bergin OP, Father Bernard Espiritu SVD, Julianne Hickey CEO of Caritas, Dr Ann Tuohy Director of The Catholic Institute, and Father Patrick Bridgman.

For more information and to register visit www.yearoffaith.org.nz

Columban Calendars

Calendars for 2013 are now available for \$10 each from the Parish Office. They feature both beautiful religious art and Liturgical information.

Archbishop's Christmas Appeal

The envelopes for this Annual Appeal by the Archbishop are on the tables at the side and front entrances to the Church. This year the Appeal will support the Lay Pastoral Leaders Fund, international priests serving in the Archdiocese and Catholic Social Services 'social workers in schools project'. Envelopes can be returned in the Sunday Mass collection prior to Christmas.

*The Magi bearing gifts, by
Andrea Mantenga c1500*



LT McGuinness
BUILDING CONTRACTORS
9 Francis Place,
PO Box 9639, Wellington
Phone (04) 384 8455 Fax (04) 801 8455
Email: ltm@mcguinness.co.nz

Little Peckish
Cafe
Feeling a little peckish?
Dukes Arcade - Great food, coffee, service
Office catering available
Phone 499 7769 - Mobile 0274 461 650

NEW WORLD
WELLINGTON CITY
279 WAKEFIELD ST.
OPEN 7 DAYS | 7AM - MIDNIGHT
WWW.WGTNCITYNEWWORLD.CO.NZ

CDF
Catholic Development Fund of Wellington

Save with the CDF and you'll be helping the needy;
each year all of CDF's operating surplus goes to the
Archdiocese for social caring and pastoral services.

Saving with us helps your Archdiocese.
Call 0800 4 233 233 or visit www.cdf.co.nz

