

For Your Diaries : 2012

Tuesday 4 December, 7pm, Workshop on Scripture

Sr Elizabeth Julian will give a workshop on Dei Verbum (a document from Vatican II encouraging everyone to become familiar with Scripture) and Matthew 1:1-16, one of the Advent readings. The workshop is at St Anne's Church, 22 Emmet St, Newtown.

Wednesday 5 December, 5.30pm, Christmas Remembrance Service

If you are missing someone you love this Christmas you are welcome to come to this remembrance service to remember and gather strength from those there. The service is at Old St Paul's on Mulgrave Street.

Wednesday 12 December, 7.30pm, Fundraising Concert

Three members of the NZSO are presenting Bach's 'Goldberg Variations'. This piece of music is arranged for a string trio and will be played by Andrew Joyce, principal cello, his wife Julia, principal viola and Anna Van Der Zee on violin. The concert will begin at 7.30pm by candlelight and lasts about 75 minutes. You may wish to bring a cushion to be more comfortable.

Thursday 13 December, 7.30pm, Healing Service

Everyone is welcome to attend this healing service led by Fr John Rea at St Theresa's Church, St Andrews Road, Plimmerton.

Wednesday 19 December, 7.30pm Carols with the Angels

You are invited to bring your friends and enjoy the beautiful 'Carols with the Angels' in our Church. It is a wonderful way to prepare for the feast of the birth of Christ.

Thursday 20 December, 7.30pm, End of Year Christmas Mass

Joshua Catholic Men's Fellowship invite all men and women to their end of year Mass themed 'Let's Celebrate' and refreshments afterwards at Sacred Heart Cathedral, Hill Street. The celebrant is Fr Mateo Kivalu. For information contact David 0274477280.

1st & 3rd Wednesdays, 7.15pm-9.15pm, Wildflowers

Is your abortion experience troubling you? This group meets to share and reflect and be with others who have had a similar experience. For more info contact Wendy Hill 027 254 9222 or email info@greenstoneddoors.co.nz

Traditional Latin Mass Sundays, 12.30pm at St Mary of the Angels.

Contact: Neil Coup 021 896 924.

Quality Te Aro Offices 5-7 Vivian Street, Wellington

Great location close to Cafe district
Busy arterial road
Air conditioned
Car parking available

Office suites available at an affordable price. Semi-serviced suites (approx 18sqm) that are fully furnished. There is also a company floor area (approx 200sqm) with 5x partitioned offices, Board room and Meeting room. Shared kitchen and shower facilities. Car parking available in the building at an additional rate.

This is a must see for new businesses on a budget.

Contact by e-mail for further information: mariabaldock@gmail.com

This newsletter is kindly sponsored by:
Michael Burrowes
of Burrowes and Company
Barristers and Solicitors
phone (04) 473 7733

BURROWES and Company

Barristers and Solicitors



A1 Auto Electrical Limited

17 -19 Webb Street, Wellington
Phone 384 2215

All Electrical Repairs
ABS and Air Bag Faults

Please Support our Sponsors

INTRODUCING The Rosary Card with our compliments

Easy reference to regularly used Rosary Prayers is now available on the Rosary Card. Small enough to double as a bookmark the Rosary Card can be left within prayer or hymn books, for re-use or can be taken home for personal use. The Rosary Card features five regularly used prayers:

The Our Father, The Hail Mary, Doxology, The Apostles Creed, Hail Holy Queen.

Available free upon request. Simply call and we will send the quantity you require.



56 Onepu Road,
Kilbirnie
Telephone 3878-301

Members of Funeral Directors Association of New Zealand.

WEST PLAZA HOTEL

LOCATION • COMFORT • STYLE

Weekend Special \$120

One night's stay & cooked breakfast for two

Available Friday, Saturday and Sunday
Subject to availability

110 - 116 Wakefield Street, Wellington
p 0800 731 444

e reservations@westplaza.co.nz
book now westplaza.co.nz



Bullement.Fortune Architects Ltd

Proud to be architects for the interior and exterior refurbishment of St Mary of the Angels

Registered Architect: Denis Fortune

3 Francis Place Te Aro
WELLINGTON
Ph: 04 385 0286

Email: bullement.fortune@extra.co.nz



Christian Supplies

www.christiansupplies.co.nz

- See our monthly newsletter in 'The Angelus'
- Freephone 0508 988 988 - Freefax 0508 988 989
email: order@pleroma.org.nz

The Angelus

St Mary of the Angels Parish

Church and Presbytery:

17 Boulcott Street,

Wellington Central

Telephone: 473 8074

Parish website: www.smoa.org.nz

St Mary of the Angels is a diverse community which seeks to praise and thank God in a place of calm and beauty and strives to be Christ alive in Central Wellington

Parish Priest

Fr Barry Scannell SM

smoapp@extra.co.nz

Assistant Priest

Fr Tom O'Connor SM

Adult Education

Fr Michael Young SM

Pastoral Worker

Sr Frances Gibbs CSB

Director of Music

Robert Oliver

robert.oliver@paradise.net.nz

Parish Manager

Penny Holden

smoamanager@extra.co.nz

Parish Office

smoaooffice@extra.co.nz

MASSES

Sunday 7am, 9am, 11am, 5pm

Monday to Friday 7.30am, 12:05pm, & 5:15pm

Saturday 11am

EACH MONTH

1st Saturday Marian Devotions
10:30am

4th Saturday 11am Mass with
Sacrament of Anointing

ADORATION

Monday to Friday 7:00-7:30am

Friday 11am- noon

RECONCILIATION

Monday to 11:30am - 12pm

Thursday 12:30-1pm, 4:30-5pm

Saturday 10:30-11am, 4:00-5:00pm

First Sunday of Advent, 2 December 2012 Year C

Advent Carol Service with St John's Presbyterian Church

The Annual Carol Service with St John's Presbyterian Church will be held at St Mary of the Angels tonight at 7.30pm. We have had a very close relationship with St John's for over 150 years and our annual Carol service is a very important ecumenical event for both our Churches.

We need parishioners to provide a plate of food. Plates can be dropped off at the Presbytery any time on Sunday or in the Hall before the service begins.

I hope many of you will come and share this liturgy with our Christian neighbours.

Fundraising Concert

On Wednesday 12 December three members of the NZSO will present Bach's 'Goldberg Variations'. This piece of music is arranged for a string trio and will be played by Andrew Joyce, principal cello, Julia Joyce, principal viola and Anna Van Der Zee on violin.

Tickets available from the Parish Office for \$20. Encourage your friends to come and enjoy this wonderful cultural opportunity in our beautiful Church.

St Mary of the Angel's Christmas Cards

The beautiful St Mary of the Angels Christmas Cards depicting the Nativity Window in the Church will be on sale again this Sunday. The cards will be available on the table outside the main doors of the Church.

The cost is \$15 for a dozen cards and envelopes.

Carols with the Angels

The annual 'Carols with the Angels' will be held on Wednesday 19 December at 7.30pm in the Church.

Fr Barry Scannell
Parish Priest

INVEST IN YOUR FAITH

CATHOLIC DEVELOPMENT FUND of WELLINGTON

This Week's Readings

First Reading Jeremiah 33:14-16

I will cause a good seed to spring forth from David.

Second Reading 1 Thess 3:12-4:2

When Christ comes may he strengthen your hearts in holiness.

Gospel Reading Luke 21:25-28, 34-36

Your redemption is near at hand.

Next Week's Readings

First Reading Baruch 5:1-9

Psalm 125

Second Reading Philippians 1:4-6, 8-11

Gospel Reading Luke 3:1-6

Last Sunday's Collection

Total	\$4,624
Parish Expenses	\$3,283
Support of House	\$1,341



Church Cleaning

On Saturday 8th December from 12.30pm we will be looking for some people to help in the cleaning of the Church for Christmas. Many hands make light work. Your help would be most appreciated. Many thanks. Sr Frances.

Vincentian Foundation Hearing Aid Grants

The Vincentian Foundation provides hearing aid grants to those persons over 65 years of age who hold a SuperGold Card that has a Community Services endorsement.

For more information please contact the parish office on 473 8074.

Mass has been offered for:

Anniversaries: Fr Peter Kiley sm, Michael McMullan, William Jenkins, Frances Haughley, Felix Kane.

Prayers for the Sick: Richard Wharton, Miriam Menzies, Arthur Gibbs, Barbara Ross, Ann Ross, Kathleen Phelan, Marjorie Feitsma, Phil Busby, Mary Egan, Dulcie Campbell, Oinah Macpherson, Helen Havasi, Maureen McDonald, Patricia Smyth, Stanley Bright, Catherine Symes.



Please remember in your prayers, these and the other sick of the Parish. If you know of anyone who is confined to their home or who needs a visit with Holy Communion, please contact Sister Frances at the Parish Office. Phone 473 8074.

Responsorial Psalm 33

R To you, O Lord, I lift my soul.

Lord, make me know your ways.

Lord, teach me your paths.

Make me walk in your truth, and teach me: for you are God my saviour. **R**

The Lord is good and upright.

He shows the path to those who stray,

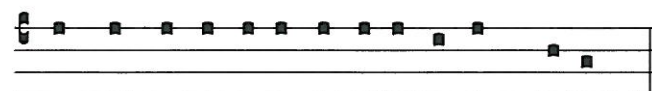
he guides the humble in the right path;

he teaches his way to the poor. **R**

His ways are faithfulness and love

for those who keep his covenant and will.

The Lord's friendship is for those who revere him; to them he reveals his covenant. **R**



Ad te Domi-ne le-va-vi a-nimam me-am.

Offertory Hymn For 11am Mass

No 230 - "My song is love unknown", verses 1, 2 & 5.

Columban Calendars

Calendars for 2013 are now available for \$10 each from the Parish Office. They feature both beautiful religious art and Liturgical information.

Adult Education in the Faith Ministry

The next session will be on Wednesday 5 December

Time: 5.30pm - 7.30pm **Venue:** Parish Hall

Theme: Spirituality and Growth and Development in the Spiritual Life

Session 5: The Three Ages and the Three Ways (Part 2) and Spiritual Direction

Saint Mary of the Angels: A Place of Welcome

2012 has been my first year studying Theatre and English Literature at Victoria University. It has also been my first time living away from home and without my family. Since moving to Wellington in March I have been coming to the 5pm Sunday Mass at Saint Mary of the Angels. I have often come along with some friends from my old high school who are also studying here. In retrospect, becoming part of the Parish at Saint Mary of the Angels was something that helped me considerably in the process of moving away from home and settling in to another city.

I became involved in the Parish. I was taught how to use the data projector and then began regularly putting together the data projector schedules for 5pm Masses. My friends and I had the same desire of maintaining our faith and relationship with the Church even though we were away from home. Attending Mass was a weekly focus of my life. My friends and I would meet up at Church on Sundays and we all took on some sort of responsibility within the Mass. This allowed us to share the experience of having the Church as part of lives, not because we were made to go by our parents or school, but for our own desire.

For me Saint Mary of the Angels became a place of comfort where I could deepen my relationship with God and find support and guidance through a year of uprooting and chaos. The relationships I formed within the Parish helped to strengthen my support network within Wellington. Although I had left behind family, friends and the established support networks from home, my involvement with the Parish and its role as a source of guidance and a provider of stability and security has helped enormously in my transition from school to tertiary study.

Angela Fouhy

Catholic Social Services Christmas gifts

Some of the families that Catholic Social Services works with find Christmas hard so we try to help by giving them some gifts to share with their children. We need small gifts for all ages of children and adults. If you can help, bring along the gift to Mass on Sunday and leave it in the basket. If wrapped, please indicate on the outside if it is for a male or female and approximately what age.

Advent Reflections

Each Thursday after mid-day Mass there will be a short 20-minute reflection on Advent. Members of the choir will sing the Advent 'O' antiphons and there will be prayers and readings from the Divine Office.

Join us to reflect and prepare for the birth of Jesus Christ.



Save with the CDF and you'll be helping the needy; each year all of CDF's operating surplus goes to the Archdiocese for social caring and pastoral services.

Saving with us helps your Archdiocese.
Call 0800 4 233 233 or visit www.cdf.co.nz



SMAYACs Prayer Group

When: Thursdays @ 6pm

Where: St Mary of the Angels Church.

All are welcome to join this group of young adults and the young at heart to pray, read and reflect on the Scriptures.

Thursday 6 December will be the last SMAYACs Prayer Group gathering for the year. We will resume our regular Thursday Prayer Group gatherings in February.

This is a great way to strengthen your prayer life and also build relationships and community. Prayer is often around 40 minutes and we usually get together afterwards for a social catch up.

Vigil for the Unborn

On Friday 7 December, all are welcome to join the Vigil for the Unborn at St. Anne's Catholic Church, Newtown. Starts with Mass at 7.00 pm and ends at 9.00pm. Supper afterwards. Come and help a great prayer for life rise up from Wellington. Enquiries: Family Life International 237 8343.

Hope and Joy – Vatican 2day:

Where can we find hope and joy in this Year of Faith? Come and explore the possibilities of living anew the joy and hope of the Second Vatican Council, 22-23 February 2013, at St Patrick's College, Kilbirnie.

Vatican 2day is organized by the Archdiocese of Wellington. Keynote speakers include: Sister Helen Bergin OP, Father Bernard Espiritu SVD, Julianne Hickey CEO of Caritas, Dr Ann Tuohy Director of The Catholic Institute, and Father Patrick Bridgman. Registration details available soon.

Contact c.jones@wn.catholic.org.nz

LT
McGuinness
BUILDING CONTRACTORS
9 Francis Place,
PO Box 9639, Wellington
Phone (04) 384 8455 Fax (04) 801 8455
Email: ltm@mcguinness.co.nz

Little Peckish
Café
Feeling a little peckish?
Dukes Arcade • Great food, coffee, service
Office catering available
Phone 499 7769 • Mobile 0274 461 650

NW
NEW WORLD
WELLINGTON CITY
279 WAKEFIELD ST.
OPEN 7 DAYS | 7AM - MIDNIGHT
WWW.WGTNCITYNEWWORLD.CO.NZ