

For Your Diaries : 2012

Tuesday 20 November, 6pm, St Vincent de Paul meeting

All are welcome to attend the meeting in St Mary of the Angel's Parish Hall.

Thursday 22 November, 7.30pm, Holy Hour

You are invited to a Holy Hour at Sacred Heart Cathedral Chapel to pray for vocations to priesthood and religious life. This Holy Hour will include prayers, Scripture, times of silence and conclude with Benediction followed by supper.

Sunday 25 November, 9.30am, Mass for Deaf

The Catholic Deaf Community invites all Deaf to join them for the 9.30am Mass at St Peter and Paul's Church, 60 Knights Road, Lower Hutt. A NZSL interpreter will be present.

Sunday 25 November, 1pm, St Andrews Celebration

All are welcome to come along to this free family event at Frank Kitts Park. There is a clan March at 1pm, followed with entertainment by pipers, drummers, dancers etc...kilts will be swinging and there will be mirth in large quantities.

November 30-December 2, Engaged Encounter

Engaged Encounter is a weekend experience for couples intending to be married. The weekend is being held at the Home of Compassion, Island Bay. For details go to www.ceewellington.org.nz or phone Aniela & Mark Potter 477 1957 or 021 187 9808 or email markandaniela@gmail.com

Tuesday 4 December, 7pm, Workshop on Scripture

Sr Elizabeth Julian will give a workshop on Dei Verbum (a document from Vatican II encouraging everyone to become familiar with Scripture) and Matthew 1:1-16, one of the advent readings. The workshop is at St Anne's Church, 22 Emmet St, Newtown.

Wednesday 5 December, 5.30pm, Christmas Remembrance Service

If you are missing someone you love this Christmas you are welcome to come to this remembrance service to remember and gather strength from those there. The service is sponsored by Lychgate Funeral Home in conjunction with Old St Paul's and the Mary Potter Hospice.

Traditional Latin Mass Sundays, 12.30pm at St Mary of the Angels.

Contact: Neil Coup 021 896 924.

Quality Te Aro Offices 5-7 Vivian Street, Wellington

Great location close to Cafe district
Busy arterial road
Air conditioned
Car parking available

Office suites available at an affordable price. Semi-serviced suites (approx 18sqm) that are fully furnished. There is also a company floor area (approx 200sqm) with 5x partitioned offices, Board room and Meeting room. Shared kitchen and shower facilities. Car parking available in the building at an additional rate.

This is a must see for new businesses on a budget.

Contact by e-mail for further information: mariabaldock@gmail.com

This newsletter is kindly sponsored by:
Michael Burrowes
of Burrowes and Company
Barristers and Solicitors
phone (04) 473 7733

BURROWES and Company

Barristers and Solicitors



A1 Auto Electrical Limited

17-19 Webb Street, Wellington
Phone 384 2215

All Electrical Repairs
ABS and Air Bag Faults

Please Support our Sponsors

INTRODUCING The Rosary Card with our compliments

Easy reference to regularly used Rosary Prayers is now available on the Rosary Card. Small enough to double as a bookmark the Rosary Card can be left within prayer or hymn books, for re-use or can be taken home for personal use. The Rosary Card features five regularly used prayers: The Our Father, The Hail Mary, Doxology, The Apostles Creed, Hail Holy Queen. Available free upon request. Simply call and we will send the quantity you require.



The Rosary Card
© Harbour City Funeral Home

Harbour City
FUNERAL HOME
56 Onepu Road,
Kilbirnie
Telephone 3878-301
Members of Funeral Directors Association of New Zealand.

WEST PLAZA HOTEL

LOCATION • COMFORT • STYLE

Weekend Special

\$120

One night's stay & cooked breakfast for two
Available Friday, Saturday and Sunday
Subject to availability

110 - 116 Wakefield Street, Wellington
p 0800 731 444

e reservations@westplaza.co.nz
book now westplaza.co.nz



Bullement.Fortune Architects Ltd

Proud to be architects for the interior and
exterior refurbishment of St Mary of the Angels

Registered Architect: Denis Fortune

3 Francis Place Te Aro
WELLINGTON
Ph: 04 385 0286

Email: bullement.fortune@extra.co.nz



Christian Supplies

www.christiansupplies.co.nz

- See our monthly newsletter in 'The Angelus'
- Freephone 0508 988 988 - Freefax 0508 988 989
email: order@pleroma.org.nz

The Angelus

St Mary of the Angels Parish

Church and Presbytery:

17 Boulcott Street,

Wellington Central

Telephone: 473 8074

Parish website: www.smoa.org.nz

St Mary of the Angels is a diverse community which seeks to praise and thank God in a place of calm and beauty and strives to be Christ alive in Central Wellington

33rd Sunday in Ordinary Time, 18 November, 2012 Year B

Young Angel Voices

Our children's choir, Young Angel Voices, gives a concert next Sunday here in the church. The children will sing the songs they have worked on during the year, including some of the late David Farquhar's set of songs called 'Play-Sing the Music'.

David wrote these songs to be used in schools, setting some well-known poets, like EE Cummings and Louis MacNeice, and writing some of the words himself. The songs have piano accompaniment, and the children love singing them with their catchy tunes and lively rhythms. Other songs include popular folk-songs, like Scarborough Fair, an opera aria by Handel 'Ombra mai fu', and the famous 'Hine e hine'. Some talented members of the choir will play or sing a solo as well, so come and hear what these young people can achieve.

Goldberg Variations

On Wednesday December 12th, three members of the NZSO will present Bach's 'Goldberg Variations' arranged for string trio, Andrew Joyce, principal 'cello, his wife Julia, principal viola, and Anna Van Der Zee, violin. The concert will start at 7:30, will be presented by candlelight, and the piece which lasts 75 minutes or so will be played straight through without a break, so bring cushions!

Many people know of it, and for those who don't, it is a wonderful work, with great variety, written originally for keyboard, but is sometimes heard in arrangements such as this. However the opportunity to hear it live is rare, and, in our wonderful acoustic and ambience, it will be a great experience, not to be missed. The concert is presented by these fine artists to help raise funds for the seismic strengthening of the church, and we are very grateful to them for this generous offer.

Christmas Cards

The beautiful St Mary of the Angels Christmas Cards depicting the Nativity Window in the Church will be on sale again from this Sunday. The cards will be available on the tables outside the main doors of the Church. The cost is \$15 for a dozen cards and envelopes.

Parish Priest

Fr Barry Scannell SM
smoapp@extra.co.nz

Assistant Priest

Fr Tom O'Connor SM

Adult Education

Fr Michael Young SM

Pastoral Worker

Sr Frances Gibbs CSB

Director of Music

Robert Oliver
robert.oliver@paradise.net.nz

Parish Manager

Penny Holden
smoamanager@extra.co.nz

Parish Office

smoaooffice@extra.co.nz

MASSES

Sunday 7am, 9am, 11am, 5pm

Monday to 7.30am, 12:05pm,
Friday & 5:15pm

Saturday 11am

EACH MONTH

1st Saturday Marian Devotions
10:30am

4th Saturday 11am Mass with
Sacrament of Anointing

ADORATION

Monday to Friday 7:00-7:30am

Friday 11am- noon

RECONCILIATION

Monday to 11:30am - 12pm

Thursday 12:30-1pm, 4:30-5pm

Saturday 10:30-11am, 4:00-5:00pm

INVEST IN YOUR FAITH

CATHOLIC DEVELOPMENT FUND of WELLINGTON

This Week's Readings

First Reading Daniel 12: 1-3
When that time comes your own people will be spared.

Second Reading Hebrews 10: 11-14, 18
By a singled offering he has achieved the eternal perfection of those who are sanctified.

Gospel Reading Mark 13:24-32
He shall gather his elect from the four winds.

Next Week's Readings

First Reading Daniel 7:13-14
Psalm 92
Second Reading Revelations 1:5-8
Gospel Reading John 18:33-37

Last Sunday's Collection

Total	\$5,394
Parish Expenses	\$3,830
Support of House	\$1,564



Catholic Social Services Christmas gifts

Some of the families that Catholic Social Services works with find Christmas hard so we try to help by giving them some gifts to share with their children. We need small gifts for all ages of children and adults. If you can help, bring along the gift to Mass on Sunday and leave it in the basket. If wrapped, please indicate on the outside if it is for a male or female and approximately what age.

Adult Education in the Faith Ministry

The next session will be on Wednesday 18 November
Time: 5.30pm - 7.30pm **Venue:** Parish Hall
Theme: Spirituality and Growth and Development in the Spiritual Life
Session 3: The Affirmative Way and the Negative Way

Mass has been offered for:

Recently Deceased: Marion Hyland

Anniversaries: Brendan Kirwin, Joan Welch, Catherine O'Regan.

Holy Souls: Where a special Mass has been requested, these will be offered during the month of November.

Prayers for the Sick: Miriam Menzies, Arthur Gibbs, Barbara Ross, Ann Ross, Kathleen Phelan, Marjorie Feitsma, Phil Busby, Mary Egan, Dulcie Campbell, Oinah Macpherson, Helen Havasi, Maureen McDonald, Patricia Smyth, Stanley Bright, Catherine Symes, Mary Dysart.

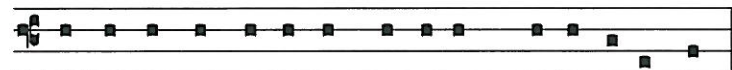
Responsorial Psalm 15

R Keep me safe, O God;
you are my hope.

O Lord, it is you who are my portion and cup;
 it is you yourself who are my prize.
 I keep the Lord ever in my sight:
 since he is at my right hand, I shall stand firm. **R**

And so my heart rejoices, my soul is glad;
 even my body shall rest in safety.
 For you will not leave my soul among the dead,
 nor let your beloved know decay. **R**

You will show me the path of life,
 the fullness of joy in your presence,
 at your right hand happiness for ever. **R**



Conserva me Domi-ne, quo-ni- am spe-ra-vi in te.

Offertory Hymn For 11am Mass

No 193-'Holy Father, God of might.

Month of the Holy Souls

During the month of November we have a Remembrance Book for the Holy Souls. You can write the names of any Holy Souls in the book and they will be prayed for at every Mass celebrated in our Church during November. The book is on a small table in front of Our Lady's altar.

If you would like a special Mass Intention for those who have died please write the name of the person(s) on the envelopes provided on the tables at the entrances to the Church, place a Mass stipend inside and either give it to one of the priests or to Sister Frances.

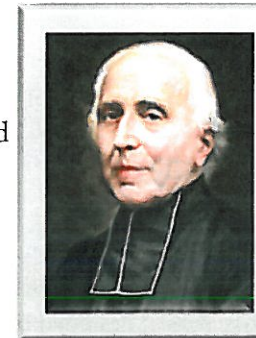
Columban Calendars

Calendars for 2013 are now available for \$10 each from the Parish Office. They feature both beautiful religious art and Liturgical information.

Jean Claude Colin SM

As you possibly know, we priests who serve you in this parish belong to a congregation called the Society of Mary. Our founder was Fr Jean Claude Colin SM. During this coming year we will be reflecting on him and his message to us Marists – priests and brothers of the Society of Mary. We invite you to join us.

John Claude Colin was born in 1790 at Les Barbery, a small settlement close to the town of St Bonnet-le-Troncy in France.



This was the time of the French Revolution – a time of turmoil and a split between the Church and French Society. The Revolution also divided the Church, some priests being faithful to Rome, while others pledged allegiance to the constitution. Jean Claude's parents supported those loyal to Rome; his father openly supporting the parish priest. Consequently an order of arrest was issued against his father, Jacques, who had to hide for a year in fear of his life. His house was boarded up and all his goods were sold. With all this suffering Jean Claude's mother, Marie died aged 37. Jacques died only three weeks later.

The young Jean Claude was subsequently looked after by a woman named Marie Echallier, whose religious practices were rather strict.

Strongly influenced by these events, Jean Claude Colin realised that people had great needs. He believed that the best way to help them was to be a source of compassion, a gentle presence, hidden in the world but not hidden from the world, just as Mary had been for the early church. So the idea of a Society devoted to the spirit of the Blessed Virgin Mary appealed to him.

Consequently he joined a group of 11 other seminarians in Lyons on 23 July 1816 who dedicated themselves to Mary. They promised to begin a new religious order in the Church; a group called "Mary-ists" whose work in the Church would resemble that of the Jesuits, but whose approach or style would be unlike anything that existed in the Church at that time. Jean Claude Colin carried that promise out.

Fr Colin wanted Marists (and all of us) "*to draw upon the spirit of Mary and breathe it - a spirit of humility, self-denial, intimate union with God and the most ardent love of neighbour.*"

Tom O'Connor SM

SMAYACs Prayer Group

When: Thursdays @ 6pm
Where: St Mary of the Angels Church.
 All are welcome to join this group of young adults and the young at heart to pray, read and reflect on the Scriptures.

Theology on Tap

When: Sunday 28 October, 6.30pm
Where: Hotel Bristol (Upstairs), Cuba Mall

For the final Theology on Tap of the year we have Brother Doug Dawick fms who will talk on the truth about chastity. For more information email smayacs@gmail.com

Young Adult Community

The Grove, a Marist Brothers' young adult community in Lower Hutt, is accepting applications for membership for 2013. There are 3 Brothers and 5 young adults (19 – 35yrs) who stay for one year.

For more information contact Br Doug (brdougfms@gmail.com or 021 258 1484) or Br Kieran (kieranfenn@gmail.com) or call The Grove 972 6926. Applications close November 30 (flexible).

Pilgrimage

Join the 14th Challenge 2000 - Marist Leadership, Service and Justice Pilgrimage from December 10th to 18th 2012. It is a fantastic opportunity to discover sacred sites in the lower North Island while being of service at the same time. Kitty Mckinley will lead the Pilgrimage and there will be more input from many wise speakers along the way.

Cost: \$150. Age: 18-30. For more information contact Therese Kyne 0273832099, Heath Hutton 0273293270, or Felise So'oa 021920046 or contact any of them at 477 0045. Sponsorship may be available.

Gap Year with Challenge 2000 and Society of Mary

This Gap Year is a one year programme that involves holistic formation, NZQA youth work training, work placements, experiences, and local and international travel. It also offers you an opportunity to be paid while helping those around you. Applications close November 29th 2012 - available on our website www.challenge2000.org.nz. Gap year starts February 2013. For information call Heath Hutton at Challenge 2000 on 477 0045 or 027 329 3270.



Save with the CDF and you'll be helping the needy; each year all of CDF's operating surplus goes to the Archdiocese for social caring and pastoral services.

Saving with us helps your Archdiocese.
Call 0800 4 233 233 or visit www.cdf.co.nz



LT McGuinness LIMITED
 BUILDING CONTRACTORS
 9 Francis Place,
 PO Box 9639, Wellington
 Phone (04) 384 8455 Fax (04) 801 8455
 Email: ltm@mcguinness.co.nz

Little Peckish Cafe
 Feeling a little peckish?
 Dukes Arcade • Great food, coffee, service
 Office catering available
 Phone 499 7769 • Mobile 0274 461 650

NEW WORLD WELLINGTON CITY
 279 WAKEFIELD ST.
 OPEN 7 DAYS | 7AM - MIDNIGHT
 WWW.WGTNCITYNEWWORLD.CO.NZ