

For Your Diaries : 2012

Sunday 12 August, 2.30pm, Marist St Pats Rugby Final

Wellingtons Catholic rugby club invites its supporters to support the Clubs Premier team in the Jubilee Cup Final. The Club Rugby Final will be played at the Hutt Recreation Ground.

Monday 13 August, 7.30pm, Healing Service

Fr John Rea will conduct a Healing Service at Sacred Heart Cathedral. This is open to everyone. Come and bring those who need Jesus' healing.

Thursday 16 August, 7.30pm, Joshua Catholic Men's Fellowship

All men are invited to come and join our meeting at Connolly Hall, Guildford Tce, Thorndon (behind Sacred Heart Cathedral).

Theme: Always Forgive", Speaker is Fr David Kennerley SM.

Want to know more? Ring David 387 9714.

Saturday 18 August, 1.30-3.30pm Dove Catholic Fellowship for Women

All Women are welcome to join us for Praise, Worship, Teaching and Fellowship at Connolly Hall, Guildford Terrace (off Hill St), Thorndon.

Speaker: Trish Caughley. Enquiries: Sandra 475 5541 www.dove.org.nz

Friday 24 August, 6.30 pm to 9.30 pm, Art Exhibition

Framed, the Art Exhibition will be exhibiting art by new and emerging artists as a fundraiser for St Patrick's College. Venue: St Patrick's College Hall, Evans Bay Parade, Kilbirnie. Cost: \$20. Tickets at the door, the College office or call Anne 479 3656. Exhibition also on Saturday 25, 10am-3pm.

Monday 15 October, Rachel's Vineyard Film Evening Fundraiser

A fundraising film evening at Petone Lighthouse Cinema to support Rachel's Vineyard Retreats. Tickets \$20. Donations welcome.

Contact Suzanne O'Rourke 021 549 528 or email suzanneor@gmail.com

19-21 October, St Mary's Centenary, Kaikorai, Dunedin

St Mary's Church and School celebrate their Centenary on Labour Weekend.

Please register at St.MarysKaikorai@xtra.co.nz, ph. 03 4877853, or write to 36 Middleton Rd, Dunedin 9012. Registrations close August 31st.

9-11 November, Rachel's Vineyard Retreat

A weekend Retreat of healing for those whose lives have been touched by abortion. All enquiries are strictly confidential.

More information is available on www.rachelsvineyard.org.nz.

Contact Wendy Hill 027 254 9222 or info@rachelsvineyard.org.nz

Traditional Latin Mass each Sunday of August, 12.30pm at St Mary of the Angels. Contact Neil Coup 021896924.

Quality Te Aro Offices

5-7 Vivian Street, Wellington

Great location close to Cafe district
Busy arterial road
Air conditioned
Car parking available

Office suites available at an affordable price. Semi-serviced suites (approx 18sqm) that are fully furnished. There is also a company floor area (approx 200sqm) with 5x partitioned offices, Board room and Meeting room. Shared kitchen and shower facilities. Car parking available in the building at an additional rate.

This is a must see for new businesses on a budget.

Contact by e-mail for further information: mariabaldock@gmail.com

This newsletter is kindly sponsored by:

Michael Burrowes
of Burrowes and Company
Barristers and Solicitors
phone (04) 473 7733

BURROWES
and Company

Barristers and Solicitors



A1 Auto Electrical Limited

17 -19 Webb Street, Wellington
Phone 384 2215

All Electrical Repairs
ABS and Air Bag Faults

Please Support our Sponsors

INTRODUCING The Rosary Card with our compliments

Easy reference to regularly used Rosary Prayers is now available on the Rosary Card. Small enough to double as a bookmark the Rosary Card can be left within prayer or hymn books, for re-use or can be taken home for personal use.

The Rosary Card features five regularly used prayers:

The Our Father, The Hail Mary, Doxology, The Apostles Creed, Hail Holy Queen.

Available free upon request.

Simply call and we will send the quantity you require.



56 Onepu Road,
Kilbirnie
Telephone 3878-301

Members of Funeral Directors Association of New Zealand.

WEST PLAZA HOTEL

LOCATION • COMFORT • STYLE

Weekend Special \$120

One night's stay & cooked breakfast for two

Available Friday, Saturday and Sunday
Subject to availability

110 - 116 Wakefield Street, Wellington
p 0800 731 444

e reservations@westplaza.co.nz
book now westplaza.co.nz



Bullement.Fortune Architects Ltd

Proud to be architects for the interior and exterior refurbishment of St Mary of the Angels

Registered Architect: Denis Fortune

3 Francis Place Te Aro
WELLINGTON
Ph: 04 385 0286

Email: bullement.fortune@xtra.co.nz



Christian Supplies

www.christiansupplies.co.nz

- See our monthly newsletter in 'The Angelus'
- Freephone 0508 988 988 - Freefax 0508 988 989
email: order@pleroma.org.nz

The Angelus

St Mary of the Angels Parish

Church and Presbytery:

17 Boulcott Street,

Wellington Central

Telephone: 473 8074

Parish website: www.smoa.org.nz

St Mary of the Angels is a diverse community which seeks to praise and thank God in a place of calm and beauty and strives to be Christ alive in Central Wellington

19th Sunday in Ordinary Time, 12 August, 2012 Year B

Feast of the Assumption

This Wednesday, 15th August, is the feast of the Assumption. It is the day we celebrate our Catholic belief that when her earthly life was over Mary was taken body and soul into heaven.

What Happened To Mary Is That For Which We All Hope

This is expressed so beautifully in the Preface of the Feast:

- Today the virgin Mother of God was taken up into heaven;
- to be the beginning and the pattern of the Church in its perfection;
- a sign of hope and comfort for your people on their pilgrim way.
- You would not allow decay to touch her body, for she had given birth to Your Son, the Lord of all life, in the glory of the incarnation.

The Assumption is a Holy Day of Obligation

This means that all those who are able should celebrate the Eucharist (come to Mass) that day.

Mass times at St Mary of the Angels are: 7.30am, 12.05pm, 5.15pm.

Vespers of the Assumption

Vespers is the Evening Prayer of the Church and we'll be singing it on Wednesday 15th at 7.30pm in St Mary of the Angels.

Our Patroness

Mary under the title of "Assumed into Heaven" is the Patroness of New Zealand and of our Parish.

Cf inside the Bulletin for a reflection on the Assumption of Our Lady.

Farewell Recital

Our Maxwell Fernie Organ Scholar, Thomas Gaynor, gives his farewell recital next Sunday August 19th, at 7.30pm. Thomas was awarded the scholarship in 2010, but was only able to take it up this year. It is the final chance to enjoy this young player's achievements before he goes to the USA for further study. Entry is free, with an opportunity to contribute to the Maxwell Fernie Trust, which has given St Mary of the Angels the benefit of Thomas' contribution to our Masses this year.

INVEST IN YOUR FAITH

CATHOLIC DEVELOPMENT FUND of WELLINGTON

This Week's Readings

First Reading	1 King	19:4-8
<i>Strengthened by the food, he walked to the mountain of the Lord.</i>		
Second Reading	Ephesians	4:30-5:2
<i>Walk in love, just as Christ.</i>		
Gospel Reading	John	6:41-51
<i>I am the living bread come down from heaven.</i>		

Next Week's Readings

First Reading	Proverbs	9:1-6
Psalm	33	
Second Reading	Ephesians	5:15-20
Gospel Reading	John	6:51-58

Last Sunday's Collection

Total	\$4,394
Parish Expenses	\$3,120
Support of House	\$1,274



Introductory Concepts of Palliative Care Workshop

The Workshop covers the palliative care inter-disciplinary approach, service delivery, holistic symptom management, compassionate communication, loss and grief and self-care.
Date: Thursday 30 August 8.30-4.30.
Venue: Mary Potter Hospice, 48-52 Mein St, Newtown.
Fee: \$175.00 For more information and a registration form go to www.marypotter.org.nz

Adult Education in the Faith Ministry

The next session will be on Wednesday 15 August
Time: 5.30pm - 7.30pm **Venue:** Parish Hall
Theme: Spirituality and the Moral Life
Session 5: The Gifts and Fruits of the Holy Spirit and Other Spiritual Qualities (Part 1)

Mass has been offered for:

Anniversaries: Catherine O'Neill, Anna Zanotti, Suzanne Judd, James Baird.



Prayers for the Sick: Noeline Ryan, Barbara Ross, Kathleen Phelan, Marjorie Feitsma, Phil Busby, Mary Egan, Dulcie Campbell, Oinah Macpherson, Marion Hyland, Helen Havasi, Bob Clark, Maureen McDonald, Maria Kasperowicz, Patricia Smyth.

Please remember in your prayers, these and the other sick of the Parish. If you know of anyone who is confined to their home or who needs a visit with Holy Communion, please contact Sister Frances at the Parish Office. Phone 473 8074

Responsorial Psalm 33

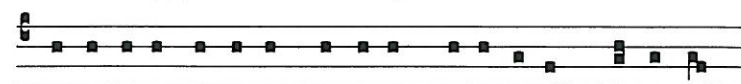
R Taste and see the goodness of the Lord

I will bless the Lord at all times,
his praise always on my lips;
in the Lord my soul shall make its boast.
The humble shall hear and be glad. **R**

Glorify the Lord with me.
Together let us praise his name.
I sought the Lord and he answered me;
from all my terrors he set me free. **R**

Look towards him and be radiant;
let your faces not be abashed.
This poor man called; the Lord heard him
and rescued him from all his distress. **R**

The angel of the Lord is encamped
around those who revere him, to rescue them.
Taste and see that the Lord is good.
He is happy who seeks refuge in him. **R**



Gusta-te et vi-de-te quo-ni- am su-a-vis est Domi-nus.

O taste and see how sweet the Lord is.

Offertory Hymn For 11am Mass

No 305 - 'Where there is charity and love'

Vigil for the Unborn

Come and help a great prayer for life rise up from Wellington at St Anne's Catholic Church, Newtown. Starts with Mass at 10 am and ends at 12pm on Sat. 12 August. Shared lunch follows. Phone Family Life International 237 8343.

RCIA

Participants in the Rite of Catholic Initiation of Adults will be meeting on Tuesday night at 7.30pm in the Hall. Anyone interested in the Catholic faith is welcome.

For information phone the office: 473 8074

Reflection: The Assumption of the Blessed Virgin Mary

For centuries Christians around the world have celebrated the Assumption of the Blessed Virgin Mary on August 15. However, it was only in 1950 that Pope Pius XII made it an official teaching of the Church.

In fact, the Assumption has such deep significance for our faith, that it is a Holy Day of obligation for Catholics. Celebrating the Assumption gives us the opportunity to lift our eyes from daily life and to think about our future homeland. As Pope Benedict XVI said in a homily in 2008,

By looking at Mary's Assumption into Heaven we understand better that even though our daily life may be marked by trials and difficulties, it flows like a river to the divine ocean, to the fullness of joy and peace. We understand that our death is not the end but rather the entrance into life that knows no death. Our setting on the horizon of this world is our rising at the dawn of the new world, the dawn of the eternal day.



We are blessed at St Mary of the Angels to have Our Lady as our patroness. As we celebrate the Assumption, we also celebrate our Patronal Feast Day, honouring Mary as the special intercessor for our parish. One of the ways our parish does that is by holding a special Vespers service on the Assumption, lead by the Choir who will sing the plainsong psalms, hymn and antiphons for the Feast, as well as settings by Palestrina and Monteverdi. Everyone is welcome to attend the Vespers Service beginning at 7.30pm. It will be followed by a short concert.

Sandra McIver

Knights of the Southern Cross 2012 Religious Writing Competition

This years topic is 'Inspired by no earthly ambition, the Church seeks but a solitary goal: to carry forward the work of Christ under the lead of the befriending Spirit. And Christ entered this world to give witness to the truth, to rescue and not to sit in judgment, to serve and not to be served.' (Vatican 2 - Gaudium et Spes)

1. How does your parish or college carry forward the work of Christ? (30 marks)
2. In what new way(s) could your parish or college carry forward the work of Christ? (40 marks)
3. How can you carry forward the work of Christ? (30 marks)

The competition offers \$1200 in prizes and is free to enter. Competition closes on September 22nd. Full details of the competition and the prizes are on www.tawacatholic.org.nz/knights.



Save with the CDF and you'll be helping the needy; each year all of CDF's operating surplus goes to the Archdiocese for social caring and pastoral services.

Saving with us helps your Archdiocese.
Call 0800 4 233 233 or visit www.cdf.co.nz



SMAYACs Holy Hour

When: Thursday 16th August @ 6pm
Where: St Mary of the Angels Church.
This week our regular prayer group will be replaced by our monthly Holy Hour. All are welcome to join this group of young adults and the young at heart to pray, read and reflect on the Scriptures. This is a great way to strengthen your prayer life and also build relationships and community.

Social Justice Winter Dialogue Series

On Wednesday 15 August, 7.30-9.00pm, St Joseph's Social Justice group welcomes Mojo Mathers, Green Party MP and spokesperson for Food. All are welcome. Venue: St Josephs, Mt Victoria. Koha for the Refugee Family Reunification Trust appreciated.

Euthanasia Discussion

This is an opportunity for all to hear a for and against viewpoint on Euthanasia given by Baroness Ilora Finlay and Maryan Street. Entry by donation to Hospice NZ. Held at Paramount Cinema, 25 Courtenay Place, Thursday 16 August 5.30-7.30pm.

Josephite Retreats

Saturday 25 August: A Fire in the Heart
Saturday 1 September: Mindfulness Day
Venue: Josephite Retreat Centre, Whanganui. For more information or to register call 06 345 5047 or email ssjoseph@xtra.co.nz

Lifest '12 Youth Day

Calling all teens and young adults: mark your diaries now for Lifest'12 Youth Day: *Love Life - Think Big* with Fr Stan Fortuna CFR, *jazz musician from N.Y.*
Sunday 23rd September from 12.15 pm
Bishop Viard College Hall, Porirua.
Phone Family Life International NZ 2378 343 or email clare.fli@xtra.co.nz

LT McGuinness LIMITED
BUILDING CONTRACTORS
9 Francis Place,
PO Box 9639, Wellington
Phone (04) 384 8455 Fax (04) 801 8455
Email: ltm@mcguinness.co.nz

Little Peckish Cafe
Feeling a little peckish?
Dukes Arcade · Great food, coffee, service
Office catering available
Phone 499 7769 · Mobile 0274 461 650

NEW WORLD WELLINGTON CITY
279 WAKEFIELD ST.
OPEN 7 DAYS | 7AM - MIDNIGHT
WWW.WGTNCITYNEWWORLD.CO.NZ