

For Your Diaries : 2012

Tuesday 10 July, 7.30pm, Evening Lecture at the Cathedral

The Hon Christopher Finlayson will speak on 'Heritage and the Church'. All are welcome to attend the lecture at Connolly Hall, Guilford Tce.

Tuesday, 10th July, 7.30pm, Charismatic Mass

The Mass will be celebrated by Fr Ron Bennett at St Joseph's Church, 1 Pine Ave, Upper Hutt. Celebrant: Fr Ron Bennett. All welcome.

Monday 16 July, 7.30pm, The Full Monte Concert 3

This concert of Baroque voices presents Pepe Becker, Jayne Tinkersley, Andrea Cochrane, Oliver Sewell, Jeffrey Chang and David Morriss. Also featuring Robert Oliver (bass viol) and Stephen Picket (theorbo and chitarrino). The concert is at Sacred Heart Cathedral, Hill Street. Door Sales: \$30 adults, \$20 seniors, and students, Under 16 free. Pre-bookings and info: www.baroquevoices.co.nz/bvschedule

Tuesday 17 July, from 5.30pm, Talk on Muslim-Catholic Relations

Brother Peter Bray, FSC (Vice-Chancellor of Bethlehem University in the Palestinian Occupied Territories) will speak about education for democracy, peace-building and Muslim-Catholic relations at the university. The talk is at Connolly Hall. Contact: Sister Catherine Jones c.jones@wn.catholic.org.nz

Saturday 21 July, 1.30-3.30pm, Dove Catholic Fellowship for Women

The speaker is Val Morrison, the Dove National President. All Women are welcome to join us at Connolly Hall, Guilford Tce for Praise, Worship, Teaching and Fellowship. Enquiries: Sandra 475 5541 www.dove.org.nz

23-26 July, 7pm, Les Miserables

St. Patrick's College in conjunction with St Mary's, St Catherine's, Wellington East Girls' College, Chilton St James and Holy Cross schools are presenting 'Les Miserables' at the St Patrick's College Hall, Monday to Thursday 23-26 July commencing at 7pm. Tickets are available from the College Office (939-3070) or www.dashtickets.co.nz/tour/157. Doors open at 6.45pm.

1st & 3rd Wednesdays, 7.15pm-9.15pm, Wildflowers

Is your abortion experience troubling you? This group meets to share and reflect and be with others who have had a similar experience. For more info contact Wendy Hill 027 2549222 or email info@greenstoneddoors.co.nz

Traditional Latin Mass each Sunday of July, 12.30pm at St Mary of the Angels. Contact: Neil Coup Ph: 021896924

Quality Te Aro Offices

5-7 Vivian Street, Wellington

Great location close to Cafe district
Busy arterial road
Air conditioned
Car parking available

Office suites available at an affordable price. Semi-serviced suites (approx 18sqm) that are fully furnished. There is also a company floor area (approx 200sqm) with 5x partitioned offices, Board room and Meeting room. Shared kitchen and shower facilities. Car parking available in the building at an additional rate.

This is a must see for new businesses on a budget.

Contact by e-mail for further information: mariabaldock@gmail.com

This newsletter is kindly sponsored by:

Michael Burrowes
of Burrowes and Company
Barristers and Solicitors
phone (04) 473 7733

BURROWES
and Company

Barristers and Solicitors



A1 Auto Electrical Limited

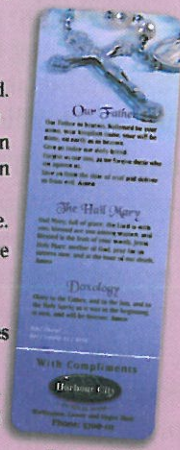
17 -19 Webb Street, Wellington
Phone 384 2215

All Electrical Repairs
ABS and Air Bag Faults

Please Support our Sponsors

INTRODUCING The Rosary Card with our compliments

Easy reference to regularly used Rosary Prayers is now available on the Rosary Card. Small enough to double as a bookmark the Rosary Card can be left within prayer or hymn books, for re-use or can be taken home for personal use. The Rosary Card features five regularly used prayers: The Our Father, The Hail Mary, Doxology, The Apostles Creed, Hail Holy Queen. Available free upon request. Simply call and we will send the quantity you require.



Harbour City
FUNERAL HOME

56 Onepu Road.
Kilbirnie
Telephone 3878-301

Members of Funeral Directors Association of New Zealand.

WEST PLAZA HOTEL

LOCATION • COMFORT • STYLE

Weekend Special \$120

One night's stay & cooked breakfast for two
Available Friday, Saturday and Sunday
Subject to availability

110 - 116 Wakefield Street, Wellington
p 0800 731 444
e reservations@westplaza.co.nz
book now westplaza.co.nz



Bullement.Fortune Architects Ltd

Proud to be architects for the interior and exterior refurbishment of St Mary of the Angels

Registered Architect: Denis Fortune

3 Francis Place Te Aro
WELLINGTON
Ph: 04 385 0286

Email: bullement.fortune@extra.co.nz



Christian Supplies

www.christiansupplies.co.nz

- See our monthly newsletter in 'The Angelus'
- Freephone 0508 988 988 - Freefax 0508 988 989
email: order@pleroma.org.nz

The Angelus

St Mary of the Angels Parish

Church and Presbytery:

17 Boulcott Street,

Wellington Central

Telephone: 473 8074

Parish website: www.smoa.org.nz

St Mary of the Angels is a diverse community which seeks to praise and thank God in a place of calm and beauty and strives to be Christ alive in Central Wellington

Parish Priest

Fr Barry Scannell SM
smoapp@extra.co.nz

Assistant Priest

Fr Tom O'Connor SM

Adult Education

Fr Michael Young SM

Pastoral Worker

Sr Frances Gibbs CSB

Director of Music

Robert Oliver
robert.oliver@paradise.net.nz

Parish Manager

Penny Holden
smoamanager@extra.co.nz

Parish Office

smoaoffice@extra.co.nz

MASSES

Sunday 7am, 9am, 11am, 5pm

Monday to Friday 7.30am, 12:05pm, & 5:15pm

Saturday 11am

EACH MONTH

1st Saturday Marian Devotions
10:30am

4th Saturday 11am Mass with
Sacrament of Anointing

ADORATION

Monday to Friday 7:00-7:30am

Friday 11am- noon

RECONCILIATION

Monday to Thursday 11:30am - 12pm
12:30-1pm, 4:30-5pm

Saturday 10:30-11am, 4:00-5:00pm

14th Sunday in Ordinary Time, 1 July, 2012 Year B

NZSO Charity Concert

On Monday 2 July a fire broke out at New Zealand Symphony Orchestra First Violinist Anna van der Zee's rented house in Highbury, Wellington. Her husband Chris was not home but Anna and her baby Clara escaped unharmed. Sadly, the house was completely destroyed and they lost all of their belongings, including their instruments.

Eager to help, the New Zealand Symphony Orchestra has organized a fundraising concert to support the young family.

"When we came up with the idea, the response from the entire NZSO, including players and staff, was overwhelming. Everyone wanted to get involved to show their support," says Andrew Joyce, NZSO Principal Cello.

Section Principal French Horn, Samuel Jacobs, will perform solo for the first time with the NZSO in Mozart's Horn Concerto, following the overture to Mozart's Magic Flute. Beethoven's well-known Symphony No. 5 concludes the popular programme which will be conducted by Hamish McKeich.

"This fundraising concert is the perfect opportunity to showcase Samuel Jacob's skill. Everyone has raved about his playing so we thought we'd programme Mozart's great Horn Concerto alongside Beethoven's distinctive Symphony No. 5," says Vesa Matti-Leppänen, NZSO Concertmaster.

Please joins us at St Mary of the Angels at 7.30pm on Saturday 14 July and show your support.

Apostleship of the Sea

Today is 'Sea Sunday' - the day on which we pray for seafarers and fisherfolk and ask for God's blessing on the work of the Apostleship of the Sea, which is the Catholic Church's ministry to those who work at sea.

The Chaplain for this ministry in Wellington is Father Kevin Head s.m. who celebrates Mass during the week here at St Mary of the Angels. Father Kevin will be preaching at the 11am Mass today and will share with us on his ministry to seafarers in Wellington.

Father Barry Scannell s.m.
Parish Priest

INVEST IN YOUR FAITH

CATHOLIC DEVELOPMENT FUND of WELLINGTON

This Week's Readings

First Reading Ezekiel 2: 2-5
The people are rebellious; they shall know there will be a prophet in their midst.

Second Reading 2 Corinthians 12: 7-10
I will glory in my infirmities so that the power of Christ may dwell in me.

Gospel Reading Mark 6: 1-6
A prophet is despised only in his own country.

Next Week's Readings

First Reading Amos 7: 12-15
Psalm 84
Second Reading Ephesians 1: 3-14
Gospel Reading Mark 6: 7-13

Last Sunday's Collection

Total	\$4,133
Parish Expenses	\$2,934
Support of House	\$1,199



Adult Education in the Faith Ministry

This is an early reminder that the course entitled "Introduction to Christian Spirituality" will recommence on Wednesday, 18 July.

Do you know how beautiful and precious you are in God's sight?

Dove Catholic Fellowship for Women invites all women to a special retreat day themed "Beautiful", on Saturday 11 August, 10am-4pm (registration begins at 9am). Venue: Our Lady of Lourdes School Hall, Palmerston North. Cost \$40. Sponsorship available. Further enquiries contact Jojo@pharmvetsolutions.com 09 420 5050 or go to www.dove.org.nz

Mass has been offered for:

Recently Deceased: Jim McGuire

Anniversaries: Fr Gerard Mills sm, Martin O' Neill, Peter Hansen, James Monague, Hon William Young, Gillian Wills



Prayers for the Sick: Marjorie Feitsma, Phil Busby, Mary Egan, Dulcie Campbell, Oinah Macpherson, Marion Hyland, Helen Havasi, Bob Clark, Maureen McDonald, Monica Swarbrick.

Please remember in your prayers, these and the other sick of the Parish. If you know of anyone who is confined to their home or who needs a visit with Holy Communion, please contact Sister Frances at the Parish Office. Phone 473 8074

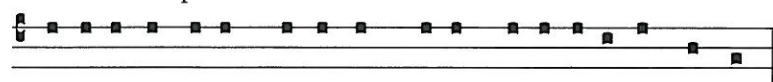
Responsorial Psalm 122

R Our eyes are fixed on the Lord, pleading for his mercy.

To you have I lifted up my eyes,
you who dwell in the heavens:
my eyes, like the eyes of slaves
on the hand of their lords. **R**

Like the eyes of a servant
on the hand of his mistress,
so our eyes are on the Lord our God
till he show us his mercy. **R**

Have mercy on us, Lord, have mercy.
We are filled with contempt.
Indeed all too full is our soul
with the scorn of the rich,
with the proud man's disdain. **R**



Ocu-li nostri ad Domi-num donec mi-se-re- a-tur nostri.
Our eyes are unto the Lord until He have mercy on us

Offertory Hymn For 11am Mass

Number 282 - 'Soul of my Saviour'

Musick for Seveall Friends A concert of Renaissance and Baroque music

Sunday 15th July, 4pm Four Hands - Two Harpsichords
Douglas Mews & Erin Helyard perform works by 18th century German composers; Benda, CPE and W.F. Bach, and J.S. Bach, including J.S. Bach's C Major Concerto. Venue: Adam Concert Room Victoria University.

Admission: \$22, Students \$10. Tickets at the door or by phone: 384 8854. Concert followed by light refreshments.

Project Stronger

We have once again been reminded this week that New Zealand is a country where earthquakes have formed the land on which we live. The deep undersea quake off Taranaki last Tuesday night reminded us of the power of nature.

Over the past few months in the Archdiocese of Wellington there has been a Working Group which has been formally assessing all the buildings in the Archdiocese for the purpose of insurance cover (which has become very expensive following the Christchurch earthquake) and to evaluate the seismic strength standards in order to assist the Archbishop in making decisions on future use of Archdiocesan property. This is known as 'Project Stronger'.

At its meeting last Thursday evening this Working Group invited the Restoration and Maintenance Committee from St Mary of the Angels to present their recommendations for the seismic strengthening of the Church. These recommendations are the fruit of many years of work by the Committee and were warmly received by the Archdiocesan Working Group.

The next step is for the Parish to formally ask the Administration Board of the Archdiocese if we can proceed to the 'design' stage. This would allow the concepts already agreed upon by our engineers, architects and builders to be brought to the point where the scope of the work and the all important cost for seismic strengthening can be established. We know that we are talking about many millions of dollars to strengthen the Church, not only to 100 per cent of the current building code but beyond it so that in the event of a seismic event the Church will be preserved for future generations.

The recommendations presented to the Archdiocesan Working Group will be presented at the Annual General Meeting of the Friends of St Mary's Charitable Trust which will be held in the Parish Hall on Sunday 29 July after the 11am Mass.

This work will be the most challenging project the Parish has ever undertaken. Please pray that it will be possible to achieve a successful outcome.

Father Barry Scannell s.m.

Seeking Christ? Wanting to become a Catholic?

Maybe you're curious about Jesus, or the Catholic Church, or perhaps you know someone who is asking questions about our Catholic Faith.

The **Rite of Christian Initiation of Adults (RCIA)** is the process through which adults are gradually introduced to the Catholic faith and way of life. We start this programme in St Mary of the Angels Parish with an introductory evening on Tuesday 7th August at 7.30pm in the parish hall, 17 Boulcott St.

If you want more information or wish to enrol in the RCIA programme please ring the parish office (04) 473 8074.

Parishioners, please invite someone whom you know to be interested in our Catholic Faith and pray for the RCIA programme in our parish – Candidates, Sponsors, and Leaders. Thank you

RCIA



Save with the CDF and you'll be helping the needy; each year all of CDF's operating surplus goes to the Archdiocese for social caring and pastoral services.

Saving with us helps your Archdiocese.
Call 0800 4 233 233 or visit www.cdf.co.nz



SMAYACs Prayer Group

When: Thursdays @ 6pm
Where: St Mary of the Angels Church.
All are welcome to join this group of young adults and the young at heart to pray, read and reflect on the Scriptures. This is a great way to strengthen your prayer life and also build relationships and community.

Communio Meeting

At the next Communio meeting the discussion will be on a commentary of a play by the late Pope John Paul II: 'The Jeweller's Shop'. This is a backdrop to the 'Theology of the Body' concept he later developed. The meeting is tonight at 7.15pm in the Boardroom at the Presbytery. For more information contact Leo or Mary Buchanan at 387 8284 or leobuchanan@xtra.co.nz

Sacred Heart Cathedral School

Are you looking for a quality Catholic education for your children? Sacred Heart Cathedral School has places across all levels, Years 1-8 (5-12 years) for 2013.

If you are interested in looking around, please email Bill Turley (Principal) at principal@sacred-heart.school.nz or ring 4724047 and make a time to visit. Enrolments are due by 31st July 2012.

We are located by the Cathedral in Guildford Tce off Hill St.

Social Justice

Winter Dialogue Series

This year's Social Justice week topic is 'Food.' On Wednesday 18 July, from 7.30-9.00pm, St Joseph's Social Justice group welcomes Julianne Hickey, Director of Caritas Aotearoa, who will speak on the topic from a Caritas perspective. All are welcome to come to the talk at St Josephs. A koha for the Refugee Family Reunification Trust would be appreciated.

LT McGuinness LIMITED
BUILDING CONTRACTORS
9 Francis Place,
PO Box 9639, Wellington
Phone (04) 384 8455 Fax (04) 801 8455
Email: ltm@mcguinness.co.nz

Little Peckish Cafe
Feeling a little peckish?
Dukes Arcade · Great food, coffee, service
Office catering available
Phone 499 7769 · Mobile 0274 461 650

NEW WORLD WELLINGTON CITY
279 WAKEFIELD ST.
OPEN 7 DAYS | 7AM - MIDNIGHT
WWW.WGTNCITYNEWWORLD.CO.NZ