

For Your Diaries : 2012

Sunday June 24, 1.30-4 pm, St. Patrick's College, Open Day

Prospective students, parents, and friends are very welcome. The Rector will address visitors at 1.30 pm in the hall. Tours will follow.

Thursday 28 June, 7.30pm, Holy Hour for Vocations

All are invited to the Sacred Heart Cathedral Chapel to pray for vocations to priesthood and religious life. The Holy Hour will include prayers, Scripture, and silence. It will conclude with Benediction followed by supper.

Thursday 28 June, 7.30pm, Caritas Meeting

The topic is 'Mandatory detention of refugees - what would it be like to live with it?' The meeting is at Connolly Hall, Guilford Terrace, Thorndon. For more information contact Lisa Beech 04-496-1765 or lisa@caritas.org.nz.

Sunday 1 July 11.00am, Marist St Pats RFC Club Mass

Supporters are invited to join with Marist St Pat's RFC at the annual Club Mass being celebrated by Marist St Pats new chaplain, Fr Brian O'Connell SM. The Mass will be held at the MSP clubrooms, Hataitai Park.

Sunday 1 July, 2.30pm, Wellington Chamber Orchestra

Peter van Drimmelen will be conducting the orchestra with a programme including Beethoven's Triple Concerto, Bizet's L'Arlesienne Suite and contemporary pieces by Hindemith (viola solo) and Young. The concert is at St. Andrews on the Terrace. Tickets are available at the door (\$20 waged, \$15 students/senior citizens/unwaged).

Wednesdays, July 4-August 8, Seminar for Women of All Ages

This 6 part DVD presentation entitled "This Promise Is For You", takes place from 7.30pm-9.30pm, Connolly Hall, Guildford Tce, Wellington. It is sponsored by Sacred Heart Prayer Group. For further information contact Sr Marie Gore 473 5905 or email mariegore@xtra.co.nz

1st & 3rd Wednesdays, 7.15pm-9.15pm, Wildflowers

Is your abortion experience troubling you? This group meets to share and reflect and be with others who have had a similar experience. For more info contact Wendy Hill 027 2549222 or email info@greenstoneddoors.co.nz

Traditional Latin Mass Sundays, 12.30pm at St Mary of the Angels.

Contact: Neil Coup Ph: 021896924.

Quality Te Aro Offices 5-7 Vivian Street, Wellington

Great location close to Cafe district
Busy arterial road
Air conditioned
Car parking available

Office suites available at an affordable price. Semi-serviced suites (approx 18sqm) that are fully furnished. There is also a company floor area (approx 200sqm) with 5x partitioned offices, Board room and Meeting room. Shared kitchen and shower facilities. Car parking available in the building at an additional rate.

This is a must see for new businesses on a budget.

Contact by e-mail for further information: mariabaldock@gmail.com

This newsletter is kindly sponsored by:
Michael Burrowes
of Burrowes and Company
Barristers and Solicitors
phone (04) 473 7733

BURROWES and Company

Barristers and Solicitors



A1 Auto Electrical Limited

17 -19 Webb Street, Wellington
Phone 384 2215

All Electrical Repairs
ABS and Air Bag Faults

Please Support our Sponsors

INTRODUCING The Rosary Card with our compliments

Easy reference to regularly used Rosary Prayers is now available on the Rosary Card. Small enough to double as a bookmark the Rosary Card can be left within prayer or hymn books, for re-use or can be taken home for personal use.

The Rosary Card features five regularly used prayers: The Our Father, The Hail Mary, Doxology, The Apostles Creed, Hail Holy Queen. Available free upon request. Simply call and we will send the quantity you require.

Harbour City

FUNERAL HOME

Members of Funeral Directors Association of New Zealand.

56 Onepu Road.
Kilbirnie
Telephone 3878-301

WEST PLAZA HOTEL

LOCATION • COMFORT • STYLE

Weekend Special

\$120

One night's stay & cooked breakfast for two
Available Friday, Saturday and Sunday
Subject to availability

110 - 116 Wakefield Street, Wellington
p 0800 731 444

e reservations@westplaza.co.nz
book now westplaza.co.nz



Bullement.Fortune Architects Ltd

Proud to be architects for the interior and exterior refurbishment of St Mary of the Angels

Registered Architect: Denis Fortune

3 Francis Place Te Aro
WELLINGTON
Ph: 04 385 0286

Email: bullement.fortune@xtra.co.nz



Christian Supplies

www.christiansupplies.co.nz

- See our monthly newsletter in 'The Angelus'
- Freephone 0508 988 988 - Freefax 0508 988 989
email: order@pleroma.org.nz

The Angelus

St Mary of the Angels Parish

Church and Presbytery:

17 Boulcott Street,

Wellington Central

Telephone: 473 8074

Parish website: www.smoa.org.nz

St Mary of the Angels is a diverse community which seeks to praise and thank God in a place of calm and beauty and strives to be Christ alive in Central Wellington

Parish Priest

Fr Barry Scannell SM

smoapp@xtra.co.nz

Assistant Priest

Fr Tom O'Connor SM

Adult Education

Fr Michael Young SM

Pastoral Worker

Sr Frances Gibbs CSB

Director of Music

Robert Oliver

robert.oliver@paradise.net.nz

Parish Manager

Penny Holden

smoamanager@xtra.co.nz

Parish Office

smoaoffice@xtra.co.nz

MASSES

Sunday 7am, 9am, 11am, 5pm

Monday to Friday 7.30am, 12:05pm, & 5:15pm

Saturday 11am

EACH MONTH

1st Saturday Marian Devotions
10:30am

4th Saturday 11am Mass with
Sacrament of Anointing

ADORATION

Monday to Friday 7:00-7:30am

Friday 11am- noon

RECONCILIATION

Monday to 11:30am - 12pm

Thursday 12:30-1pm, 4:30-5pm

Saturday 10:30-11am, 4:00-5:00pm

Nativity of St. John the Baptist, 24 June 2012: Year B

A Midwinter Festival of Music

Today, from 2.30pm to 3.30pm in the Church there will be a Midwinter festival of music, featuring the Choir of St Mary of the Angels, Young Angel Voices and the Maxwell Fernie Organ Scholars.

Come along for an hour of music, followed by a demonstration of the organ, an exhibition of liturgical music books, refreshments in the Crypt and a chance to sing some Gregorian Chant!

Admission is free so tell your friends about our wonderful tradition of music and bring them to our beautiful Church to enjoy this midwinter festival of Music.

St Patrick's College, Wellington, Open Day

St Patrick's College in Kilbirnie are having an open day today beginning at 1.30pm for prospective students for 2013. Enrolments close on 27 July.

Communio Meeting

At the next Communio meeting the discussion will be on a commentary of a play by the late Pope John Paul II: 'The Jeweller's Shop'. This is a backdrop to the 'Theology of the Body' concept he subsequently developed.

The meeting is at 7.15pm on Sunday 8 July in the Boardroom at the Presbytery. For more information contact Leo or Mary Buchanan at 387 8284 or leobuchanan@xtra.co.nz

Father Barry Scannell s.m.

Parish Priest

INVEST IN YOUR FAITH

CATHOLIC DEVELOPMENT FUND of WELLINGTON

This Week's Readings

First Reading	Isaiah	49: 1-6
<i>Behold I will make you a light to the nations</i>		
Second Reading	Acts	13:22-26
<i>Christ's coming was announced beforehand by the preaching of John</i>		
Gospel Reading	Luke	1:57 - 66, 80
<i>John is his name</i>		

Next Week's Readings

First Reading	Wisdom	1:13-15, 2:23-24
Psalm	29	
Second Reading	2 Corinthians	8:7, 9, 13-15
Gospel Reading	Mark	5:21-43

Last Sunday's Collection

Total	\$3,837
Parish Expenses	\$2,724
Support of House	\$1,113



Archdiocese Pastoral Area Internship Programme

Check out the draft plan for the Internship Programme at www.wn.catholic.org.nz/departments/pastoral-services/youth-and-young-adult-ministry. After reading it flick us an email with your thoughts...Do you like the idea? Would you sign up to be part of it? What would you change? Or anything else you'd like to tell us.

It won't take you long but it could have huge impact on what's happening for young people near you next year. Please have responses in by the Wednesday 27 June.

Email d.siave@wn.catholic.org.nz or call (04)496-1731.

Mass has been offered for:

Anniversaries Clare Achima, Mario Pilloti

Prayers for the Sick Erlinda Demafelis, Maisie Sinclair, Katherine Hatch, Sister Sarto DOLC, Phil Busby, Jack Body, Emma Stanley, Des Nunns, Mary Egan, Dulcie Campbell, Oinah Macpherson, Paul Carr, Maria Kasperowicz, Marion Hyland, Helen Havasi, Patricia Smyth, Bryan Stempa, Patrick Grace, Bob Clark, Maureen McDonald, Monica Swarbrick.



Please remember in your prayers, these and the other sick of the Parish. If you know of anyone who is confined to their home or who needs a visit with Holy Communion, please contact Sister Frances at the Parish Office. Phone 473 8074

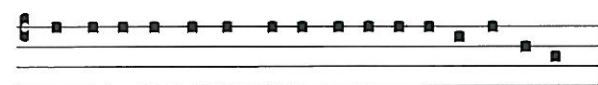
Responsorial Psalm 138

R I praise you, for I am wonderfully made.

Oh Lord, you search me and you know me,
you know my resting and my rising,
you discern my purpose from a far.
You mark when I walk or lie down,
all my ways lie open to you **R**

For it was you who created my being,
knit me together in my mother's womb.
I thank you for the wonder of my being,
for the wonders of all your creation. **R**

Already you knew my soul,
my body held no secret from you
when I was being fashioned in secret
and moulded in the depths of the earth. **R**



Confi-tebor ti-bi, mi-ra-bi-li- a ope-ra tu- a.

I will praise thee, wonderful are thy works.

Offertory Hymn For 11am Mass

Number 168; 'For all the saints' verses 1, 2, 7 & 8.

Marriage Preparation and Education Co-ordinator

We are seeking a person to co-ordinate Marriage Preparation Courses and Marriage Education Initiatives for the Archdiocese of Wellington. This position is a fixed term position for 10 hours per week, and would suit someone who is highly motivated and organised, and who has a heart for marriage ministry.

For further information and/or a Job Description and Application form, please contact Lorraine McArthur 496-1706 or email l.mcarthur@wn.catholic.org.nz.

The Importance of Bequests

Over the years we have been blessed by the generosity of people who have made provision in their Wills for a bequest to be made to the Parish. 'These bequests have been so important in ensuring the Parish 'balances the books'. Bequests have also helped with financing large projects such as the exterior and interior refurbishment of the Church, the restoration of the stained glass windows and the repair and upgrading of the organ. These projects which have taken place over the past couple of decades have kept our beautiful church as a functioning Church building, which is both admired and cherished by people from throughout New Zealand and overseas.

I am always pleasantly surprised when occasionally as Parish Priest I receive a letter from the administrators of an estate to say that St Mary of the Angels has been included as a beneficiary. Last year a couple of bequests helped fund our deficit for the year.

Over the next few years we have major financial challenges with the earthquake strengthening of both the Church and the Presbytery. This work (which has to be carried out) will involve millions of dollars. The focus on earthquake strengthening is now very acute following the events in Christchurch. We are fortunate that through the expertise of our Building and Maintenance Committee we are in the final stages of planning this work. However, it cannot be done without major financial resources.

You may wish to consider including St Mary of the Angels as a beneficiary in your estate. I am sure that your solicitor would be able to assist but if you need any help please do not hesitate to ask. We have the legal and accounting expertise in the Parish Finance Committee to help with any such requests.

We thank anyone who has already included St Mary of the Angels in their estate. Be assured that all benefactors are prayed for and remembered for their generosity.

Father Barry Scannell s.m.
Parish Priest.



Knights of the Southern Cross 2012 Religious Writing Competition

This year's topic is 'The Church's solitary goal': 'Inspired by no earthly ambition, the Church seeks but a solitary goal: to carry forward the work of Christ under the lead of the befriending Spirit. And Christ entered this world to give witness to the truth, to rescue and not to sit in judgment, to serve and not to be served.' (Vatican 2 - Gaudium et Spes)

1. How does your parish or college carry forward the work of Christ? (30 marks)
2. In what new way(s) could your parish or college carry forward the work of Christ? (40 marks)
3. How can you carry forward the work of Christ? (30 marks)

The competition offers \$1200 in prizes and is free to enter. Competition closes on September 22nd. Full details of the competition and the prizes are on www.tawacatholic.org.nz/knights.

SMAYACs Prayer Group

When: Thursdays @ 6pm
Where: St Mary of the Angels Church
All are welcome to join this group of young adults and the young at heart to pray, read and reflect on the Scriptures. This is a great way to strengthen your prayer life and also build relationships and community.

Lifeteen 2012 Snow Camp 30 June - 2 July

Snow Camp is an opportunity to join with other young people and have a mountain experience, a pile of fun and learn about your faith. There will be other activities available. Busses from Wellington to Snow-camp (at Whakapapa - Kristin and Tamaranui School Lodges).

Cost: Without Skiing: \$105

Skiing*:

\$120-Happy Valley Youth Pass;

\$180-Happy Valley Adult Pass

All 2 day Passes:

\$180 Youth All Mountain Pass

\$240 Adult All Mountain Pass

For more information and to register contact: Di Rogers

dilovesjesus@hotmail.com

For more information on Lifeteen visit: www.lifeteen.com

*Passes include ski/snowboard hire but are based on 2011 prices as they haven't released the prices for 2012 as of yet.

LT
McGuinness
BUILDING CONTRACTORS
9 Francis Place,
PO Box 9639, Wellington
Phone (04) 384 8455 Fax (04) 801 8455
Email: ltm@mcguinness.co.nz

Little Peckish
Café
Feeling a little peckish?
Dukes Arcade - Great food, coffee, service
Office catering available
Phone 499 7769 - Mobile 0274 461 650

NW
NEW WORLD
WELLINGTON CITY
279 WAKEFIELD ST.
OPEN 7 DAYS | 7AM - MIDNIGHT
WWW.WGTNCITYNEWWORLD.CO.NZ

CDF
Catholic Development Fund of Wellington

Save with the CDF and you'll be helping the needy;
each year all of CDF's operating surplus goes to the
Archdiocese for social caring and pastoral services.

Saving with us helps your Archdiocese.
Call 0800 4 233 233 or visit www.cdf.co.nz

