

For Your Diaries : 2012

19 April, 7.30pm, Joshua Catholic Men's Fellowship Meeting

This is an invite to all men to come and join us at our Praise and Worship meeting at Connolly Hall, Guilford Tce, Thorndon (behind Sacred Heart Cathedral). The theme will be 'Come into His presence with songs of joy'. For more information phone David on 387 9714.

21st April 1.30pm - 3.30pm, Dove Catholic Fellowship for Women

All Women welcome to join us for praise, worship, teaching and fellowship at Connolly Hall Guildford Terrace (off Hill St) Thorndon. Speaker: Michael Powell. Enquiries: Sandra 475 5541 www.dove.org.nz

26th - 28th April, 'From Genesis to Jesus', Bible study group

An open invitation to all parishioners who are interested in how to study the Bible. A short three day training course will be held at Connolly Hall, Thorndon, from April 26th -28th. For more details phone 8017797 or e-mail new-zealand@icpe.org

27th April, 7pm - 8.30pm, 'Journeying into Prayer' Book Launch

All are invited to the launch and blessing of the new prayer book 'Journeying into Prayer: people & their pathways'. This book is comprised of writings about the experience and practice of praying from Christian and other world religions. Come and celebrate with the editor Fr Neil Darragh and local writers Margaret Butler, Joy Cowley, Catherine Jones, Elizabeth Julian, Trish McBride, James Lyons and Pushpa Woods in The Foyer of the Cathedral of the Sacred Heart, Wellington.

28th-29th April, Men Alive Weekend

The Archdiocese of Wellington are hosting a retreat weekend for all men (aged 18 to 80+) at the Otaki Bridge Lodge. Cost \$60 all inclusive. For full details and registration forms contact Patrick Haughey 04 905 4467.

8th May - 19th June, 'This Promise is for you': Seminar for men

Joshua Men's Fellowship and Lifeteen invite all men to attend a six part DVD seminar presentation entitled 'This promise is for you'. The first presentation will begin on Tuesday 8th May, 7.30pm to 9.30pm, at Connolly Hall. For more information contact John Kinney 475 5541 or e-mail johnsandra.k@clear.net.nz

22-24 June and 9-11 November 2012, Rachel's Vineyard Retreats

A weekend of healing for those whose lives have been touched by abortion. Information and support is available for men and women. All enquiries are strictly confidential. Visit www.rachelsvineyard.org.nz or contact Wendy Hill on 027 254 9222 or info@rachelsvineyard.org.nz

Labour Weekend, Sacred Heart Centenary

The centenary celebrations for Sacred heart College, Lower Hutt, will be held over Labour Weekend - 19th - 21st October 2012. Please register interest on the college website: www.sacredheartcollege.co.nz or call the College on 04 566 1089

Traditional Latin Mass each Sunday of April, 12.30pm at St Mary of the Angels.

Contact Neil Coup 021 896 924

Quality Te Aro Offices

5-7 Vivian Street, Wellington

Great location close to Cafe district
Busy arterial road
Air conditioned
Car parking available

Office suites available at an affordable price. Semi-serviced suites (approx 18sqm) that are fully furnished. There is also a company floor area (approx 200sqm) with 5x partitioned offices, Board room and Meeting room. Shared kitchen and shower facilities. Car parking available in the building at an additional rate.

This is a must see for new businesses on a budget.

Contact by e-mail for further information: mariabaldock@gmail.com

This newsletter is kindly sponsored by:

Michael Burrowes
of Burrowes and Company
Barristers and Solicitors
phone (04) 473 7733

BURROWES
and Company

Barristers and Solicitors



A1 Auto Electrical Limited

17 -19 Webb Street, Wellington
Phone 384 2215

All Electrical Repairs
ABS and Air Bag Faults

Please Support our Sponsors

INTRODUCING The Rosary Card with our compliments

Easy reference to regularly used Rosary Prayers is now available on the Rosary Card. Small enough to double as a bookmark the Rosary Card can be left within prayer or hymn books, for re-use or can be taken home for personal use.

The Rosary Card features five regularly used prayers:

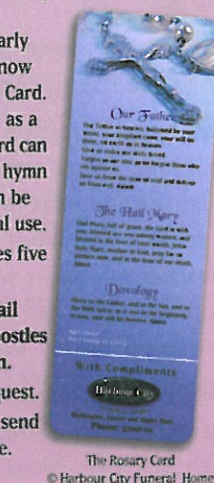
The Our Father, The Hail Mary, Doxology, The Apostles Creed, Hail Holy Queen.

Available free upon request.

Simply call and we will send the quantity you require.



Members of Funeral Directors Association of New Zealand.



The Rosary Card
© Harbour City Funeral Home

56 Onepu Road.
Kilbirnie
Telephone 3878-301

WEST PLAZA HOTEL

LOCATION • COMFORT • STYLE

Weekend Special \$120

One night's stay & cooked breakfast for two
Available Friday, Saturday and Sunday
Subject to availability

110 - 116 Wakefield Street, Wellington
p 0800 731 444

e reservations@westplaza.co.nz
book now westplaza.co.nz



Bulleymment.Fortune Architects Ltd

Proud to be architects for the interior and exterior refurbishment of St Mary of the Angels

Registered Architect: Denis Fortune

3 Francis Place Te Aro
WELLINGTON
Ph: 04 385 0286

Email: bulleymment.fortune@xtra.co.nz



Christian Supplies

www.christiansupplies.co.nz

- See our monthly newsletter in 'The Angelus'

- Freephone 0508 988 988 - Freefax 0508 988 989

email: order@pleroma.org.nz

The Angelus

St Mary of the Angels Parish

Church and Presbytery:

17 Boulcott Street,

Wellington Central

Telephone: 473 8074

Parish website: www.smoa.org.nz

St Mary of the Angels is a diverse community which seeks to praise and thank God in a place of calm and beauty and strives to be Christ alive in Central Wellington

Parish Priest

Fr Barry Scannell SM

smoapp@xtra.co.nz

Assistant Priest

Fr Tom O'Connor SM

Adult Education

Fr Michael Young SM

Pastoral Worker

Sr Frances Gibbs CSB

Director of Music

Robert Oliver

robert.oliver@paradise.net.nz

Parish Manager

Penny Holden

smoamanager@xtra.co.nz

Parish Office

smoaoffice@xtra.co.nz

MASSES

Sunday 7am, 9am, 11am, 5pm

Monday to Friday 7.30am, 12:05pm, & 5:15pm

Saturday 11am

EACH MONTH

1st Saturday Marian Devotions 10:30am

4th Saturday 11am Mass with Sacrament of Anointing

ADORATION

Monday to Friday 7:00-7:30am

Friday 11am- noon

RECONCILIATION

Monday to 11:30am - 12pm

Thursday 12:30-1pm, 4:30-5pm

Saturday 10:30-11am, 4:00-5:00pm

15th April 2012: 2nd Sunday of Easter Year B

Congratulations

We warmly congratulate Rosalie and Jim Coyle who celebrated their Diamond wedding anniversary with a Mass in our Church yesterday. They were married at the Sacred Heart Basilica in Hill Street on the 14th of April 1952.

During their married life Rosalie and Jim have been very much involved in the Parish life of St Mary of the Angels. Rosalie was a member of the Choir under Maxwell Fernie. Jim was for many years a member of the Parish Finance Committee and was very involved during the upgrading and refurbishing of the Church in the 1990's.

We thank and congratulate them today and ask that God continue to bless them for many more years of married love. May their commitment inspire many young people to consider the vocation of marriage.

Planned Giving Tax Receipts

The receipts for the 2011/12 financial year ending 31 March 2012 will be posted in the coming week. If you have changed address in the last 12 months please contact the Parish Office, otherwise the receipt will be posted to your old address.

The Finance Committee encourages parishioners to support the Parish through the Planned Giving system. It gives the Committee much more certainty in planning and meeting its fiscal obligations and ensures that the Parish is kept in good financial heart. Our financial commitments for the coming year have increased considerably because of the soaring cost of insurance as a result of the earthquake in Christchurch. In the coming week our insurance premium of \$33,000 is due for payment.

If you would like to support the Parish through the Planned Giving system, either by direct Debit or envelopes please contact the Parish Office. If you contribute in this way you can claim a tax rebate on your donations.

Thank you for your generosity which ensures our beautiful Church continues to be 'an oasis in the middle of a busy city'.

Father Barry Scannell s.m.

Parish Priest

INVEST IN YOUR FAITH

CATHOLIC DEVELOPMENT FUND of WELLINGTON

This Week's Readings

First Reading Acts 4:32-35
The whole group was united, heart and soul.

Second Reading John 5:1-6
Anyone begotten by God has already overcome the world.

Gospel Reading John 20:19-31
After eight days, Jesus come back in and stood among them.

Next Week's Readings

First Reading Acts 3:13-15, 17-19

Psalm 4

Second Reading John 2:1-5

Gospel Luke 24:35-48

Last Sunday's Collection

Total	\$5,709
Parish Expenses	\$4,053
Support of House	\$1,656



Communio Discussion Group

The next Communio discussion will take place tonight, Sunday 15 April at 7.15pm in the Boardroom. The paper for discussion is 'Are You Afraid of the Thief? A Cordial Approach to Lectio Divina' by Simeon Leiva - Merikakis. The article illustrates the practice of Lectio Divina with a meditation on Marks Gospel, and uses reflections by St Therese of Lisieux to show how contemplative reading of the scriptures can lead us to a personal relationship with Jesus Christ. For more information or a copy of the paper please contact Leo or Mary Buchanan 3878284 or email leobuchanan@xtra.co.nz

Mass has been offered for:

Recently Deceased Ruth Somerville

Anniversaries Terence McDonald, June Eagle, Jeanine Richardson, Huhenia Moran

Prayers for the Sick Sister Sato DOLC, Phil Busby, Jack Body, Emma Stanley, Des Nunns, Mary Egan, Dulcie Campbell, Oinah Macpherson, Paul Carr, Maria Kasperowicz, Marion Hyland, Helen Havasi, Patricia Smyth, Vicki McPhee, Bryan Stempa, Patrick Grace, Bob Clark, Maureen McDonald.



Please remember in your prayers, these and the other sick of the Parish. If you know of anyone who is confined to their home or who needs a visit with Holy Communion, please contact Sister Frances at the Parish Office. Phone 473 8074

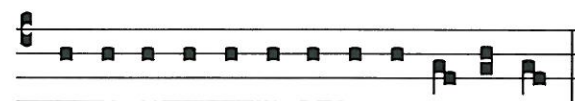
Responsorial Psalm 117

R Give thanks to the Lord for he is good, his love is everlasting.

Let the sons of Israel say:
'His love has no end.'
Let the sons of Aaron say:
'His love has no end.'
Let those who fear the Lord say:
'His love has no end'. **R**

The Lords right hand has triumphed;
his right hand raised me up.
I shall not die, I shall live
and recount his deeds.
I was punished, I was punished by the Lord,
but not doomed to die. **R**

The stone which the builders rejected
has become the corner stone.
This is the work of the Lord,
a marvel in our eyes.
This day was made by the Lord;
we rejoice and are glad. **R**



Alle-lu-ia, Alle-lu-ia, Alle-lu-ia.

Offertory Hymn For 11am Mass

Number 120: 'All creatures of our God and King', vv 1, 2 & 7

Adult Education in the Faith Ministry

There will be a short two week break before the next Adult Education in the Faith session. The next scheduled session is on Wednesday, 2nd May 2012.

Reflection: Seeing is believing

In our world today, belief is expected to be based on proof. If you cannot *prove* something to be true, then surely it cannot be accepted as fact. It seems illogical, unreasonable, inconceivable or even ignorant that someone might believe something to be true through faith alone.



What Thomas asks of Jesus in the Gospel today acts as a reminder to us all; we like to see things with our own eyes, before believing them to be true.

And yet, to have faith in God and in each other is what God is calling us to do. Unlike Thomas, we are not able to confirm our belief that Jesus is truly alive again by touching the wounds left by his crucifixion. We must rely on what others tell us, and what God reveals to us. Jesus' Resurrection can be difficult to comprehend when we are otherwise surrounded by tactile, 'real' things and experiences. We may even feel distant from God, but we must have faith that God is always there. God never leaves our side, and loves us unconditionally.

Deep in our hearts lies something more powerful than anything that can be proven in this life. Sometimes, we don't need all the answers. All we need is our faith in God. Mother Teresa reminds us to "be faithful in small things, because it is in them that your strength lies."

By Rachel Marlow, (student reflection from 'online ministries')

Genesis to Jesus

Genesis to Jesus is a bible study training program for everyone who wants to be enriched by the Word of God. This programme is organised by the ICPE Mission with the support and endorsement of Archbishop John Dew, and is to be presented by Matthew Leonard, executive director of St Paul's Centre.

By the end of the training, participants will know many of the main characters of Scripture, the overall plot, and how it all affects them now in their daily life. Those who attend all 3 days will receive all the Presenter Notes, PowerPoint, Student Outlines and Notes, and more to equip them to present the bible study to church groups, home studies etc.

The course dates are: Thursday 26 April, 7pm - 9pm, Friday 27 April 7pm - 9pm & Saturday 28 April 10am - 4pm

For more information see the poster in the Church foyer and register at: new-zealand@icpe.org

Sacrament of Confirmation

The Sacrament of Confirmation for the Wellington Central Pastoral Area (St Joseph's - Mt Victoria, St Bernard's - Brooklyn, and St Mary of the Angels) will be celebrated by Archbishop John on Sunday 20th May at the 9.30am Mass at St Joseph's. Preparation for the Sacrament will begin on Sunday 6th May.

If you have not been Confirmed and would like to receive this Sacrament, please contact the Parish Office as soon as possible.

SMAYACs Prayer Group

When: Thursdays @ 6pm
Where: St Mary of the Angels
All are welcome to join this group of young adults and the young at heart to pray, read and reflect on the Scriptures. This is a great way to strengthen your prayer life and also build relationships and community. Prayer is often around 40 mins and we usual get together afterwards for a social catch up.

Theology on Tap

The first Theology on Tap talk for the year will be on Sunday 29th of April at 6.30pm (after the 5pm Mass). Br Kieran Fenn will be talking on the book of Revelation. Br Kieren is an international scripture scholar, who has lectured around the world to seminarians and scripture students, he is also on the board of the New Zealand Bible Society, come along and get a Catholic perspective on this deep and often confusing book.

St Vincent de Paul

The next St Vincent de Paul meeting will be held this Tuesday, 17th April, in the Parish Hall. All welcome.

Volunteers Needed Homes of Compassion Annual Street Appeal Day

Volunteers are required to help the Sisters during the Annual Street Appeal day on Friday 27th July between 7am - 3pm. If you can help please phone the Suzanne Aubert Compassion Centre on 385 9299 or the Home of Compassion on 383 4952. If you wish to make a \$10 donation please phone 0900 42667. The cost will appear on your next telephone account.

LT
McGuinness
LIMITED
BUILDING CONTRACTORS
9 Francis Place,
PO Box 9639, Wellington
Phone (04) 384 8455 Fax (04) 801 8455
Email: ltm@mcguinness.co.nz

Little Peckish
Cafe
Feeling a little peckish?
Dukes Arcade · Great food, coffee, service
Office catering available
Phone 499 7769 · Mobile 0274 461 650

NW
NEW WORLD
WELLINGTON CITY
279 WAKEFIELD ST.
OPEN 7 DAYS | 7AM - MIDNIGHT
WWW.WGTNCITYNEWWORLD.CO.NZ

CDF
Catholic Development Fund of Wellington

Save with the CDF and you'll be helping the needy;
each year all of CDF's operating surplus goes to the
Archdiocese for social caring and pastoral services.

Saving with us helps your Archdiocese.
Call 0800 4 233 233 or visit www.cdf.co.nz

