

## For Your Diaries : 2012

**Saturday 31st March, 10am – 3.00pm**

**Dove Catholic Fellowship for women**

Dove Catholic Fellowship for women invites all women to a seminar day 'Equipping women for the fullness of life through the power of the Holy Spirit', at Connolly Hall (off Hill St), Thorndon. Presenters: Judy Olsen and Pam Wood. Doors open at 10am with a cuppa at 9.30am. Please bring own lunch. Registration \$20 enquiries Sandra 475 5541 [www.dove.org.nz](http://www.dove.org.nz)

**Saturday 31st March, 2pm, Voice For Life Annual General Meeting**

All are welcome (including new members) to the next 'Voice For Life' meeting held in the Bill Pearce Room, St Joseph's Catholic Church, Mt Victoria, Wellington. The focus of the meeting will be on prayer for all expectant mothers and the elderly.

**6th April, 'Seven Last Words of Christ'**

The final words spoken by Christ from the cross, composed as a reflection for Good Friday by Hayden, will be performed by members of the new Zealand Symphony Orchestra at 7pm on Good Friday in our Church.

**28th-29th April, Men Alive Weekend**

The Archdiocese of Wellington are hosting a retreat weekend for all men (aged 18 to 80+) at the Otaki Bridge Lodge. Cost \$60 all inclusive. For full details and registration forms contact Patrick Haughey 04 905 4467.

**22-24 June and 9-11 November 2012, Rachel's Vineyard Retreats**

A weekend of healing for those whose lives have been touched by abortion. Information and support is available for men and women. All enquiries are strictly confidential. Visit [www.rachelsvineyard.org.nz](http://www.rachelsvineyard.org.nz) or contact Wendy Hill on 027 254 9222 or [info@rachelsvineyard.org.nz](mailto:info@rachelsvineyard.org.nz)

**Saturday 31st March 9.30am - 1.30pm, 'Made in Petone'**

Come and see 22 exciting artists and crafters, including 10 new stallholders, showcase their work at Sacred Heart Parish Hall, 33 Britannia St, Petone. This art & craft market includes food, drinks, Easter raffles, and amazing kids activities. Free car parking available.

**Traditional Latin Mass** each Sunday of March, 12.30pm at St Mary of the Angels. Contact Neil Coup 021 896 924

### Quality Te Aro Offices

5-7 Vivian Street, Wellington

Great location close to Cafe district  
Busy arterial road  
Air conditioned  
Car parking available

Office suites available at an affordable price. Semi-serviced suites (approx 18sqm) that are fully furnished. There is also a company floor area (approx 200sqm) with 5x partitioned offices, Board room and Meeting room. Shared kitchen and shower facilities. Car parking available in the building at an additional rate.

This is a must see for new businesses on a budget.

Contact by e-mail for further information: [mariabaldock@gmail.com](mailto:mariabaldock@gmail.com)

This newsletter is kindly sponsored by:

Michael Burrowes  
of Burrowes and Company  
Barristers and Solicitors  
phone (04) 473 7733

**BURROWES  
and Company**

Barristers and Solicitors



**A1 Auto Electrical Limited**

17 -19 Webb Street, Wellington  
Phone 384 2215

All Electrical Repairs  
ABS and Air Bag Faults

## Please Support our Sponsors

### INTRODUCING The Rosary Card with our compliments

Easy reference to regularly used Rosary Prayers is now available on the Rosary Card. Small enough to double as a bookmark the Rosary Card can be left within prayer or hymn books, for re-use or can be taken home for personal use.

The Rosary Card features five regularly used prayers:

**The Our Father, The Hail Mary, Doxology, The Apostles Creed, Hail Holy Queen.**

Available free upon request. Simply call and we will send the quantity you require.

**Harbour City**  
FUNERAL HOME

56 Onepu Road,  
Kilbirnie  
Telephone 3878-301

Members of Funeral Directors Association of New Zealand.

### WEST PLAZA HOTEL

LOCATION • COMFORT • STYLE

#### Weekend Special \$120

One night's stay & cooked breakfast for two  
Available Friday, Saturday and Sunday  
Subject to availability

110 – 116 Wakefield Street, Wellington  
p 0800 731 444

e [reservations@westplaza.co.nz](mailto:reservations@westplaza.co.nz)  
book now [westplaza.co.nz](http://westplaza.co.nz)



Bullement.Fortune Architects Ltd

Proud to be architects for the interior and exterior refurbishment of St Mary of the Angels

Registered Architect: Denis Fortune

3 Francis Place Te Aro  
WELLINGTON  
Ph: 04 385 0286

Email: [bullement.fortune@extra.co.nz](mailto:bullement.fortune@extra.co.nz)



**Christian Supplies**

[www.christiansupplies.co.nz](http://www.christiansupplies.co.nz)

- See our monthly newsletter in 'The Angelus'  
- Freephone 0508 988 988 - Freefax 0508 988 989  
email: [order@pleroma.org.nz](mailto:order@pleroma.org.nz)

# The Angelus

St Mary of the Angels Parish

**Church and Presbytery:**

**17 Boulcott Street,**

**Wellington Central**

**Telephone: 473 8074**

**Parish website: [www.smoa.org.nz](http://www.smoa.org.nz)**

*St Mary of the Angels is a diverse community which seeks to praise and thank God in a place of calm and beauty and strives to be Christ alive in Central Wellington*

**25th March 2012: 5th Sunday of Lent Year B**

### Revised Roman Missal

It is not only the new road rules which come into effect this Sunday, this is also the day when the Revised Roman Missal becomes the official text for all Masses celebrated in New Zealand.

There has been a great deal of ink spilled, emails written and words spoken, over the new English translation of the Mass, that is, the new edition of the Roman Missal, which will become the only approved text to be used in New Zealand from this Sunday. There have been many discussions surrounding the new translations and the process that led to their approval. Depending on who you read - it's a beautiful translation that preserves the majesty of the original Latin; or it's not much of a change at all; or it's an overly literal translation that sounds awkward and clumsy.

Its probably unfair to judge until a few months have passed, and the priests and people have had the chance to hear and speak and pray with the changes. Over 12 months ago people were confused and upset over the change from "and also with you" to "and with your spirit". But people seem to have become used to that now, and are appreciating the biblical source of the phrase. Now some are concerned about the translation of the Our Father we will use at Mass - at all English Masses around the world. As one priest wrote, "This is still the Mass: We are still celebrating Christ who is in our midst . . . We must not let anything get in the way of that." We remember that we are coming together as one people to pray as Jesus taught us.

*Archbishop John Dew*

### Planned Giving and Donations

As we come to the end of the tax year (31 March) it is a good time to review your financial commitment to the Parish over the past 12 months. Any lump sums given before 31 March can be claimed in the 2011 - 2012 tax year. A tax rebate of 33.3% may be claimed on all your contributions. Tax receipts will be issued in April. If you have changed your address, please advise the Parish Office.

### MASSSES

**Sunday** 7am, 9am, 11am, 5pm

**Monday to Friday** 7.30am, 12:05pm, & 5:15pm

**Saturday** 11am

### EACH MONTH

**1st Saturday** Marian Devotions  
10:30am

**4th Saturday** 11am Mass with  
Sacrament of Anointing

### ADORATION

**Monday to Friday** 7:00-7:30am

**Friday** 11am- noon

### RECONCILIATION

**Monday to Thursday** 11:30am - 12pm

**Thursday** 12:30-1pm, 4:30-5pm

**Saturday** 10:30-11am, 4:00-5:00pm

# INVEST IN YOUR FAITH

CATHOLIC DEVELOPMENT FUND of WELLINGTON

## This Week's Readings

**First Reading** Jeremiah 31:31-34  
*The days are coming when I will make a new covenant with Israel and I will forgive their iniquity.*

**Second Reading** Hebrews 5:7-9  
*He learnt to obey and became for all the source of eternal salvation.*

**Gospel Reading** John 12:20-33  
*If a grain of wheat falls on the ground and dies, it yields a rich harvest.*

## Next Week's Readings

First Reading Isaiah 50:4-7  
 Psalm 21  
 Second Reading Philippians 2:6-11  
 Gospel Mark 14:1 - 15:47

## Last Sunday's Collection

Total	\$4,877
Parish Expenses	\$3,463
Support of House	\$1,414



## Lenten Meditations

There will be a 15 minute Lenten Meditation lead by members of the choir after midday Mass on Thursdays during Lent. You are all invited to join in this Lenten prayer.

## Stations of the Cross

Each Friday during Lent there will be an opportunity to reflect on the Stations of the Cross. This will take place after the 5.15pm Mass. This is a special opportunity for us to prepare for Jesus' Passion at Easter by reflecting and praying at each of the fourteen Stations. All welcome.

**Daylight Saving ends on Sunday 1 April 2012 (clocks go back one hour)**

## Mass has been offered for:

## Recently Deceased

**Anniversaries** Mavis Henderson-Newport, Fr Michael Tomasi sm, Coralie Leyland, Denis Boyd, Nugent Menzies

**Prayers for the Sick** Jack Body, Jim Meachen, Emma Stanley, Sam Sutherland, Des Nunns, Mary Egan, Dulcie Campbell, Oinah Macpherson, Paul Carr, Maria Kasperowicz, Marion Hyland, Helen Havasi, Patricia Smyth, Ron Finlayson, Vicki McPhee, Bryan Stempa, Patrick Grace, Anita Rae, Bob Clark, Maureen McDonald, Ron Blair.



*Please remember in your prayers, these and the other sick of the Parish. If you know of anyone who is confined to their home or who needs a visit with Holy Communion, please contact Sister Frances at the Parish Office. Phone 473 8074*

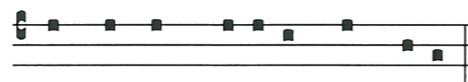
## Responsorial Psalm 50

**R Create a clean heart in me, O God.**

Have mercy on me, God, in your kindness.  
 In your compassion blot out my offence.  
 O wash me more and more from my guilt  
 and cleanse me from my sin. **R**

A pure heart create for me, O God,  
 put a steadfast spirit within me.  
 Do not cast me away from your presence,  
 nor deprive me of your holy spirit. **R**

Give me again the joy of your help;  
 with a spirit of fervour sustain me,  
 that I may teach transgressors your ways  
 and sinners may return to you. **R**



Cor mundum cre- a in me, De- us.

*Create a clean heart in me, O God.*

## Offertory Hymn For 11am Mass:

Number 217 'Lord Jesus think on me' verses 1, 4, 5 & 6

## Adult Education in the Faith Ministry

The next session will take place on:

**Date:** Wednesday 28th March 2012.

**Venue:** Parish Hall **Time:** 5.30pm - 7.30pm

**Theme:** Spirituality and the Christian Mysteries

**Session 3:** The Spirit, the Soul of the Church and Body of Christ (Part 1)

## Visitors to our Church

There are many overseas visitors who come and pray at St Mary of the Angels. You may be interested in these email messages which were sent to us from some visitors.



We are the tourists from Poland from Lodz City. We are little over 30 years old and we loved your Church very much. We would like to **thank you very much**, for the plaque we found in your Church. This table is sacrificed in memory of 14,500 Polish soldiers - prisoners of Second World War murdered by the Soviets in 1940 at Katyn and other unknown places in USSR (in today's Russia). We really appreciate these symbolic words. It is very important for us and for the Polish People.

Thank you very much again for the plaque.

I want to tell you some words about my visit to your Church in January. I am from Moscow, Russia, and I visited Wellington this winter. I did not plan to visit your Church (or any churches) in Wellington, for I am not a Catholic. I do not know what led me to your Church on that beautiful, misty day in the hours between the Masses. The Church was almost empty, there were very few people inside, the lights were down. I do not know what happened to me, but this calm atmosphere, this silent twilight and figure of the Virgin Mary caused a very strange feeling inside me. I am not ready to call it deep faith. It was some kind of anticipation of something very essential for me that is ready to appear. It felt finding a solution of some kind of problem - it is very difficult to describe it in one letter. In any case, I am very grateful to you - for the fact of the existence of the Church and how this brought peace to my soul. Unfortunately, I was very busy during my visit and I had no time to come to Mass in your Church... I don't know when I will be in Wellington next, but will most certainly visit again. It was the first time I have felt something of a nice and good faith when visiting a Church.

Warmest regards and God bless

It is so lovely for us to hear the effect that our beautiful Church has on visitors to Wellington.

## SMAYACs Prayer Group

**When:** Thursdays @ 6pm

**Where:** St Mary of the Angels  
 All are welcome to join this group of young adults and the young at heart to pray, read and reflect on the Scriptures. This is a great way to strengthen your prayer life and also build relationships and community. Often the evening continues afterwards with a social catch up.

## Praise and Adoration

The Home of Compassion is providing opportunity for praise and adoration this Lent. Come and enter into the mystery of Compassion during this time of Lent.

**When:** 7pm-9pm, 26th March

**Where:** The Home of Compassion, 2 Rhine St, Island Bay.

For more information contact Sister Rachel: sr.rachel@compassion.org.nz

## Marist Young Adult Ministry

During lent MYAM will be running a reading, discussion, prayer programme called 'Essential Jesus' and is aimed at showing who Jesus really is and why he is so important in today's world.

**Time:** Every Thursday in March from 7.30pm - 9pm

**Venue:** Ss Peter and Paul Church Parish hall, Lower Hutt.

For more info contact Br Kieran or Br Doug at The Grove: 972 6926 or 021 258 1484

## Drop-in Centre Volunteers

Volunteers are needed on weekdays between 9am and 1pm to help in the drop-in centre run in the Crypt. Please contact Sister Sarto if you can help. Thank you. Ph: 472 9177 (crypt) or 527 0190 (home).

**LT McGuinness LIMITED**  
 BUILDING CONTRACTORS  
 9 Francis Place,  
 PO Box 9639, Wellington  
 Phone (04) 384 8455 Fax (04) 801 8455  
 Email: ltm@mcguinness.co.nz

**Little Peckish Café**  
*Feeling a little peckish?*  
 Dukes Arcade • Great food, coffee, service  
 Office catering available  
 Phone 499 7769 • Mobile 0274 461 650

**NEW WORLD WELLINGTON CITY**  
 279 WAKEFIELD ST.  
 OPEN 7 DAYS | 7AM - MIDNIGHT  
 WWW.WGTNCITYNEWWORLD.CO.NZ

**+CDF**  
 Catholic Development Fund of Wellington

**Save with the CDF and you'll be helping the needy; each year all of CDF's operating surplus goes to the Archdiocese for social caring and pastoral services.**

**Saving with us helps your Archdiocese.**  
 Call 0800 4 233 233 or visit [www.cdf.co.nz](http://www.cdf.co.nz)

