

## This Week's Readings

**First Reading** Leviticus 13:1-2, 44-46  
*As long as he is unclean, he must live alone, outside the camp.*

**Second Reading** 1 Corinthians 10:31—11:1  
*Be imitators of me, as I am of Christ.*

**Gospel Reading** Mark 1:40-45  
*The leprosy left him and he was cured.*

## Next Week's Readings

**First Reading** Isaiah 43:18-19, 21-22, 24-25

Psalm 40

**Second Reading** 2 Corinthians 1:18-22

**Gospel** Mark 2:1-12

## Last Sunday's Collection

Total	\$4,473
Parish Expenses	\$3,176
Support of House	\$1,297



## Offertory Hymn For 11am Mass:

Number 277 'Seek, O seek the Lord'

## Xaio Ma Concert

This Wednesday 15th February at 7:30pm on St Mary of the Angels will host the amazing counter-tenor, Xaio Ma. All those who heard Xaio Ma in his brief promotional performance at the NZSM at the end of January will testify to his brilliance, his power to communicate the beauty of the music, and his beautiful voice. Ma will be singing a programme of Vivaldi, Handel and Riccardo Broschi, accompanied by Gregory Squire, Anne Loesser - baroque violins, Robert Oliver - viola da gamba, and Erin Helyard - harpsichord. Tickets available for \$30 & (\$20 concessions) at [www.eventfinder.co.nz](http://www.eventfinder.co.nz)

## Mass has been offered for:

### Anniversaries

Dorothea Walker, Ross Meads, Ritchie Clapham, Nomaza Sidma-Jacob

### Prayers for the Sick

Claudia Wysocki, George Haldezos, Anita Rae, Bob Clark, Kieran St Clair, Maryvac de Rosario, Mary Egan, Dulcie Campbell, Oinah Macpherson, Maureen McDonald, Ron Blair, Paul Carr, Peter Tawhaki, Cecilia Dickson, Maria Kasperowicz, Marion Hyland, Helen Havasi, Desmond Nunns, Patricia Smyth, Ron Finlayson, Vicki McPhee, Pat Perkins, Romola Sullivan, Bryan Stempa, Patrick Grace.

*Please remember in your prayers, these and the other sick of the Parish. If you know of anyone who is confined to their home or who needs a visit with Holy Communion, please contact Sister Frances at the Parish Office. Phone 473 8074*



## Responsorial Psalm 31

**R I turn to you, Lord, in time of trouble,  
and you fill me with the joy of salvation.**

Happy the man whose offence is forgiven,  
whose sin is remitted.

O happy the man to whom the Lord  
imputes no guilt,  
in whose spirit is no guile. **R**

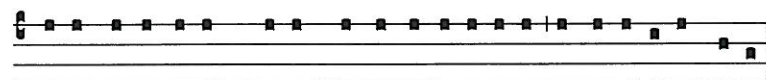
But now I have acknowledged my sins;  
my guilt I did not hide.

I said: 'I will confess  
my offence to the Lord.'

And you, Lord, have forgiven  
the guilt of my sin. **R**

Rejoice, rejoice in the Lord,  
exult, you just!

O, come ring out your joy,  
all you upright of heart. **R**



Tu es re-fu-gi-um me-um a tri-bu-la-ti-one, exulta-ti-o me-a.

*Thou art my refuge from the trouble, my joy.*

## Thank You!

The Pontifical Mission Societies wish to thank the Parishioners of St Mary of the Angels for the money collected on Mission Sunday 2011. The collection of \$493.30 will be spent supporting missionary bishops and peoples, in mainly third world countries, many of whom rely on your financial support in establishing the Church in their area. Take a look at the Missionz website: [www.missionz.co.nz](http://www.missionz.co.nz) or ask for a newsletter from the National Office: PO Box 12 322, Wellington.

## Reflection: Goodwill, always

A few weeks ago I met a tiler who had arrived back home after working in Christchurch, where he'd sought prosperity amongst the rubble. He didn't make that much money but he did get in touch with his soul. One day the tiler saw an old man weeping in the street as he watched a demolition ball fly through the remains of an old building. "Are you alright?" he asked. And the old man answered, "I am crying because I remember when I was a boy, passing bricks to my father as he built this building."

Now the building is gone, the physical structure is lost... yet the feelings that this space symbolised remain.

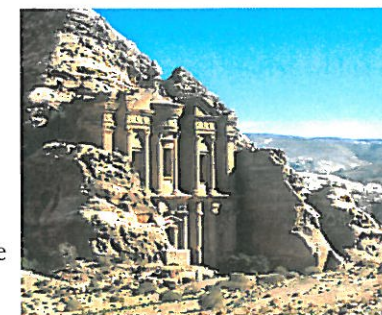
The 'structure' which replaces the building is empty space. The building's purpose is no longer held in the fragility of the concrete. Rather, the field of space itself is the new construction.

When we come to the end of our Lenten journey together, we will see what space *truly* contains. Space is structural; we construct and project the idea of emptiness into space. Yet no thing is wholly empty; all things are populated with some form of energy and potential. The Easter tomb *seems* empty, and we even call it that. In truth, however, it is a hidden pointer; an intuitive lure to enter and be made spiritually whole.

Now, in Ordinary Church time, we are wedged between the seasons of Christmas and Lent. Scripture is fashioning us to be simultaneously sombre and joyful. It seems impossible but it is the rudimentary call to attaining balance in our lives which makes this time 'ordinary'. It's also a time of persisting with acts of goodwill which we sang about in Christmas Carols; the goodwill we pledged to pass onto one another.

The Three Wise Men invested their goodwill in a future king; Christ the Messiah. Since that day each one of us has been involved in a vast spiritual relay as we strive to hand on the gift of God's benevolence. We don't have to lay bricks: The foundation stone - the Word of our God - is carved onto our hearts. We simply need to pass the bricks, pass the Gospel message on in visible and meaningful ways. This involves real action - the action of generosity. Like the proud, young boy eager to help his father by passing on bricks, we need to show that mutual encouragement carries a community. We cannot be miserly with our acts of kindness or stingy in our deeds of love. Peace on earth to all people of goodwill.

*Clarice Stewart, Parishioner*



Petra of Jordan

## SMAYACs Prayer Group

**When:** Thursdays @ 6pm

**Where:** St Mary of the Angels

All are welcome to join this group of young adults and the young at heart to pray, read and reflect on the Scriptures. This is a great way to strengthen your prayer life and also build relationships and community. Often the evening continues afterwards with of a social catch up.

If you are interested in getting involved with the St Mary of the Angels Young Adults Group, or want to help organise events, or would like more information, please email [smayacs@gmail.com](mailto:smayacs@gmail.com)

## St Mary of the Angels Children's Choir

The 'Young Angel Voices' choir is for children aged 8-12years who love to sing. Contact Music Director Robert Oliver: [robert.oliver@paradise.net.nz](mailto:robert.oliver@paradise.net.nz) (04) 934 2296 or pick up a flyer from the Church for more details.

## Adult Education in the Faith Ministry

Wednesday 22nd February 2012 will inaugurate the 'Adult Education in the Faith Ministry' offered at St Mary of the Angels. You are all invited to attend these sessions which will be run by Father Michael Young SM.

**Venue:** Parish Hall

**Time:** 5.30pm - 7.30pm

**Session 1:** 22 February. The 'Five Pillars' of Christian Spirituality (Part 1)

**Session 2:** 29 February. The 'Five Pillars' of Christian Spirituality (Part 2)

## Change of date - Prayer and Reflection Morning now 17 March

The date for the Prayer and Reflection Morning at St Mary of the Angels which was to be held on Saturday 11th February, is now to be held on **Saturday, 17th March from 8.30am - 10.30am in the Parish Hall.**

As well as an opportunity for spiritual reflection, it will also help us to prepare for the Easter Liturgies, particularly for those who are Proclaimers of the Word (Readers) and those who are Extraordinary Ministers of Holy Communion. All welcome.

**LT McGuinness**  
BUILDING CONTRACTORS  
9 Francis Place,  
PO Box 9639, Wellington  
Phone (04) 384 8455 Fax (04) 801 8455  
Email: [ltm@mcguinness.co.nz](mailto:ltm@mcguinness.co.nz)

**Little Peckish**  
Café  
*Feeling a little peckish?*  
Dukes Arcade - Great food, coffee, service  
Office catering available  
Phone 499 7769 - Mobile 0274 461 650

**NEW WORLD**  
WELLINGTON CITY  
279 WAKEFIELD ST.  
OPEN 7 DAYS | 7AM - MIDNIGHT  
[WWW.WGTNCITYNEWWORLD.CO.NZ](http://WWW.WGTNCITYNEWWORLD.CO.NZ)

**CDF**  
Catholic Development Fund of Wellington

Save with the CDF and you'll be helping the needy;  
each year all of CDF's operating surplus goes to the  
Archdiocese for social caring and pastoral services.

Saving with us helps your Archdiocese.  
Call 0800 4 233 233 or visit [www.cdf.co.nz](http://www.cdf.co.nz)





## For Your Diaries : 2012

**Sunday 12th February, 7.30pm, EcoLiturgy**

In this EcoLiturgy we pause to become more aware of threats to our marine environment. The reflection in this liturgy will be led by Jeffery Shima, Associate Professor of Marine Ecology - Victoria University.

**Tuesday 14th February, 7pm, St Valentine's Day Mass**

You are invited to the Archdiocesan Mass at Sacred Heart Cathedral on St Valentine's Day, in recognition of International Marriage Week (12th-19th Feb).

**Wednesday 15th February, 7:30pm, Xaio Ma Concert**

Chinese singer Xiao Ma - a mezzo-soprano counter-tenor accompanied by Gregory Squire and Anne Loesser - baroque violins, and Robert Oliver - viola da gamba. A concert of baroque music by Handel and Vivaldi.

Tickets available at [www.eventfinder.co.nz](http://www.eventfinder.co.nz) \$30 (\$20 concessions) + booking fee.

**Thursday 16th February, 7.30pm, Joshua Catholic Men's Fellowship Meeting**

All men are invited to come and join us at our Praise and Worship meeting at Connolly Hall, Guilford Tce, Thorndon (behind Sacred Heart Cathedral). For more details phone David 387 9714

**Friday 17th February, Vigil for the Unborn**

St Anne's Catholic Church, Emmett Street, Newtown. Starts with Mass at 7pm followed by Exposition of the Blessed Sacrament until 9.00 pm. Includes the option of going on a rosary procession during Exposition. Ph. 2378343. [www.fli.org.nz](http://www.fli.org.nz)

**Saturday 18th February, 1.30pm - 3.30pm, Dove Catholic Fellowship for Women**

All women welcome to join us at Connolly Hall Guildford Terrace (off Hill St) for Praise, Worship, Teaching and Fellowship. Speaker Jan Balcombe from Ruawai, Northland will share: Her walk on the wild side and God restoring her.

Enquiries: Sandra 475 5541 [www.dove.org.nz](http://www.dove.org.nz)

**Saturday 18th February, 2-4pm, Joy Cowley Book Launch**

You are invited to attend the book launch of The Easter Story, written for young children by Joy Cowley and illustrated by Father Don Morrison. Kiwi Hall, Bell St Featherston (next to Anzac Hall). For more information please call Sue Devereux 04 496 1744 or [s.devereux@wn.catholic.org.nz](mailto:s.devereux@wn.catholic.org.nz)

**Tuesday 21st February, 7.30pm, Healing Service**

All are invited to attend a Healing Service led by Father John Rea SM, held at St Bernadette's Church, 194 Naenae Road, Naenae.

**Friday 24th February, Catholic Social Services Street Day Appeal**

Collectors are needed in Wellington and Lower Hutt. If you are able to give an hour of your time to help please phone Lesley or Vivien on 385 8642 or email [l.hooper@wn-catholicsocialservices.org.nz](mailto:l.hooper@wn-catholicsocialservices.org.nz)

**Traditional Latin Mass** each Sunday of February, 12.30pm at St Mary of the Angels.

Contact Neil Coup 021 896 924

### Quality Te Aro Offices 5-7 Vivian Street, Wellington

Great location close to Cafe district  
Busy arterial road  
Air conditioned  
Car parking available

Office suites available at an affordable price. Semi-serviced suites (approx 18sqm) that are fully furnished. There is also a company floor area (approx 200sqm) with 5x partitioned offices, Board room and Meeting room. Shared kitchen and shower facilities. Car parking available in the building at an additional rate.

This is a must see for new businesses on a budget.

Contact by e-mail for further information: [mariabaldock@gmail.com](mailto:mariabaldock@gmail.com)

This newsletter is kindly sponsored by:  
Michael Burrowes  
of Burrowes and Company  
Barristers and Solicitors  
phone (04) 473 7733

### BURROWES and Company

Barristers and Solicitors



### A1 Auto Electrical Limited

17 -19 Webb Street, Wellington  
Phone 384 2215

All Electrical Repairs  
ABS and Air Bag Faults

## Please Support our Sponsors

### INTRODUCING The Rosary Card with our compliments

Easy reference to regularly used Rosary Prayers is now available on the Rosary Card. Small enough to double as a bookmark the Rosary Card can be left within prayer or hymn books, for re-use or can be taken home for personal use.

The Rosary Card features five regularly used prayers:

The Our Father, The Hail Mary, Doxology, The Apostles Creed, Hail Holy Queen.

Available free upon request.

Simply call and we will send the quantity you require.



56 Onepu Road,  
Kilbirnie  
Telephone 3878-301

Members of Funeral Directors Association of New Zealand.

### WEST PLAZA HOTEL

LOCATION • COMFORT • STYLE

#### Weekend Special

**\$120**

One night's stay & cooked breakfast for two

Available Friday, Saturday and Sunday  
Subject to availability

110 - 116 Wakefield Street, Wellington  
p 0800 731 444

e [reservations@westplaza.co.nz](mailto:reservations@westplaza.co.nz)  
book now [westplaza.co.nz](http://westplaza.co.nz)



Bullement.Fortune Architects Ltd

Proud to be architects for the interior and exterior refurbishment of St Mary of the Angels

Registered Architect: Denis Fortune

3 Francis Place Te Aro  
WELLINGTON  
Ph: 04 385 0286

Email: [bullement.fortune@xtra.co.nz](mailto:bullement.fortune@xtra.co.nz)



### Christian Supplies

[www.christiansupplies.co.nz](http://www.christiansupplies.co.nz)

- See our monthly newsletter in 'The Angelus'

- Freephone 0508 988 988 - Freefax 0508 988 989

email: [order@pleroma.org.nz](mailto:order@pleroma.org.nz)

# The Angelus

## St Mary of the Angels Parish

### Church and Presbytery:

17 Boulcott Street,

Wellington Central

Telephone: 473 8074

Parish website: [www.smoa.org.nz](http://www.smoa.org.nz)

*St Mary of the Angels is a diverse community which seeks to praise and thank God in a place of calm and beauty and strives to be Christ alive in Central Wellington*

### Parish Priest

Fr Barry Scannell SM

[smoapp@xtra.co.nz](mailto:smoapp@xtra.co.nz)

### Assistant Priest

Fr Tom O'Connor SM

### Adult Education

Fr Michael Young SM

### Pastoral Worker

Sr Frances Gibbs CSB

### Director of Music

Robert Oliver

[robert.oliver@paradise.net.nz](mailto:robert.oliver@paradise.net.nz)

### Parish Manager

Penny Holden

[smoamanager@xtra.co.nz](mailto:smoamanager@xtra.co.nz)

### Parish Office

[smoaoffice@xtra.co.nz](mailto:smoaoffice@xtra.co.nz)

### MASSES

Sunday 7am, 9am, 11am, 5pm

Monday to Friday 7.30am, 12:05pm, & 5:15pm

Saturday 11am

### EACH MONTH

1st Saturday Marian Devotions 10:30am

4th Saturday 11am Mass with Sacrament of Anointing

### ADORATION

Monday to Friday 7:00-7:30am

Friday 11am- noon

### RECONCILIATION

Monday to 11:30am - 12pm

Thursday 12:30-1pm, 4:30-5pm

Saturday 10:30-11am, 4:00-5:00pm

## 12th February 2012: 6th Sunday in Ordinary Time Year B

### Thank You

Thank you to those who attended the Archdiocese Waitangi Day Mass at St Mary of the Angels on Monday. Thank you to those who brought a plate of food for the shared morning tea with our visitors from the Maori communities of Te Ngakau Tapu from Porirua, and Te Kainga from Kilbirnie, and to those who helped serve our guests. Finally, a special thank you to Robert Oliver and the choir for providing such beautiful music for the Mass.

### Pastoral Area Sacramental Programme

Enrolments are now being accepted for the Pastoral Area Sacramental Programme which begins on Tuesday 28th February. The three sacraments of Reconciliation, Confirmation and First Holy Communion are being offered to children in Year 4 and above. The preparation for these sacraments is co-ordinated by our Pastoral Area; St Joseph's, St Bernard's and St Mary of the Angels.

Enrolment forms are on the tables at the back and side doors of the Church. Please complete these and give them to one of the priests or bring them to the Parish Office. Enrolments close on 23rd February. For further information please contact Bede Clarke on 478 4202

### Communio Discussion Group

The first meeting for 2012 will be held tonight, Sunday 12th February at 7.15pm in the Presbytery Board Room. The topic is an address by Benedict XVI on 'The Origins of Western Theology and the Roots of European Culture'. The purpose of this group is to provide an opportunity for people in this Parish to discuss matters of faith and thinking based on articles published in the journal 'Communio - International Catholic Review'. The articles, written by international writers, cover areas of philosophy, theology, economics, poetry, politics, prayer and faith, and provide an interesting basis for discussion. You are all welcome to come and take part in these enjoyable discussions, in which we learn much about our faith and about the world. Enquiries: [leobuchanan@xtra.co.nz](mailto:leobuchanan@xtra.co.nz) or 387 8284 for Mary or Leo Buchanan.

# INVEST IN YOUR FAITH

CATHOLIC DEVELOPMENT FUND of WELLINGTON