

This Week's Readings

First Reading Job 7:1-4, 6-7
I am filled with sorrow all day long.

Second Reading 1 Corinthians 9:16-19, 22-23
Punishment will come to me if I do not preach the Gospel.

Gospel Reading Mark 1:29-39
This is a new kind of teaching that speaks with authority.

Next Week's Readings

First Reading Leviticus 13:1-2, 44-46;
Psalm 31

Second Reading 1 Corinthians 10:31—11:1

Gospel Mark 1:40-45

Last Sunday's Collection

Total	\$4,341
Parish Expenses	\$3,082
Support of House	\$1,259



ADULT EDUCATION IN THE FAITH MINISTRY

As was advertised in the Angelus last year, Wednesday 22nd February 2012 will inaugurate the 'Adult Education in the Faith Ministry' offered at St Mary of the Angels. You are all invited to attend these sessions which will be presented by Father Michael Young sm.

Venue: Parish Hall **Time:** 5.30pm – 7.30pm

Session 1: 22nd February. Overview: the 'Five Pillars' of Christian Spirituality (Part 1)

Session 2: 29th February. Overview: the 'Five Pillars' of Christian Spirituality (Part 2)

Mass has been offered for:

Recently Deceased Marianna Grinskis

Anniversaries Peter Kim, Monica O'Grady, Matthew Barnett, Olive Drane

Prayers for the Sick George Haldezos, Eric Rae, Anita Rae, Bob Clark, Kieran St Clair, Maryvac de Rosario, Mary Egan, Dulcie Campbell, Oinah Macpherson, Maureen McDonald, Ron Blair, Paul Carr, Peter Tawhaki, Cecilia Dickson, Maria Kasperowicz, Marion Hyland, Helen Havasi, Desmond Nunns, Patricia Smyth, Ron Finlayson, Vicki McPhee, Pat Perkins, Romola Sullivan, Bryan Stempa, Patrick Grace.



Please remember in your prayers, these and the other sick of the Parish. If you know of anyone who is confined to their home or who needs a visit with Holy Communion, please contact Sister Frances at the Parish Office. Phone 473 8074

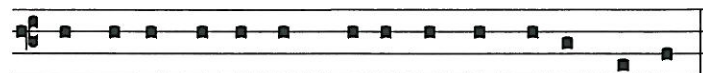
Responsorial Psalm 146

R Praise the Lord who heals the broken-hearted.

Praise the Lord for he is good;
sing to our God for he is loving;
to him our praise is due. **R**

The Lord builds up Jerusalem
and brings back Israel's exiles,
he heals the broken-hearted,
he binds up all their wounds.
He fixes the number of the stars;
he calls each one by its name. **R**

Our Lord is great and almighty;
his wisdom can never be measured.
The Lord raises the lowly;
he humbles the wicked to the dust. **R**



Lauda-te Domi-num qui sa-nat contri-tos corde.

Praise the Lord who healeth the broken of heart.

Offertory Hymn For 11am Mass:

Number 269 'Praise to the Lord' verses 1, 3 and 4

Catholic Social Services Street Day Appeal Friday February 24th

Collectors are needed in Wellington and Lower Hutt. If you are able to give an hour of your time to help please phone Lesley or Vivien on 385 8642 or email l.hooper@wn-catholicsocialservices.org.nz

Reflection: Te Tiriti o Waitangi

Every year on 6th February, New Zealand marks the signing of the Treaty of Waitangi in 1840. For some people, Waitangi Day is a holiday; for many, and especially for Maori, it is the occasion for reflecting on the Treaty. Since the 1970s the style and mood of the commemorations on Waitangi Day have been influenced by the increasingly heated debate surrounding the place of the Treaty in modern New Zealand.

Reflecting on Waitangi Day is difficult to do without understanding the differences between Maori and European culture and history. The intertwined history of the Maori and Europeans is generally understood on a basic level. Cultural understanding and empathy is more difficult as it requires us to acknowledge different values as equivalent to our own.

The Gospel reading for Waitangi Day Mass serves as a good starting point for cultural understanding - cultural empathy. Jesus tells us '... if anyone hits you on the right cheek, offer him the other as well; if someone wishes to go to law with you to get your tunic, let him have your cloak as well. And if anyone requires you to go one mile, go two miles with him. Give to anyone who asks you, and if anyone wants to borrow, do not turn away. You have heard how it was said, you will love your neighbour and hate your enemy. But I say this to you, love your enemies and pray for those who persecute you...'

Around 1350s The first Polynesian settlers discovered New Zealand.

1642 Dutch explorer Abel Tasman made the first confirmed European discovery of New Zealand.

1840 The Treaty of Waitangi is signed on 6 February by about 40 chiefs. By September another 500 chiefs in different parts of the country have signed. On 21 May Lieutenant-Governor Hobson proclaims British sovereignty over all of New Zealand: over the North Island on the basis of cession through the Treaty of Waitangi and over the southern islands by right of discovery.

1854 The First Parliament meets in Auckland.

1856 'Responsible' government begins in New Zealand, with an executive that needs the support of a majority of the members of the House of Representatives. The governor retains responsibility for defence and Māori affairs.

1858 The Waikato chief Te Wherowhero becomes the first Māori King, taking the name Pōtatau. The rise of Te Kīngitanga reflects the desire of many Māori for a leader to unite the tribes, protect land from further sales and make laws for Māori.

1864 The colonial government asserts its responsibility for Māori affairs.

1867 Four Māori parliamentary seats are created (initially as a temporary measure for five years), with universal suffrage for Māori males aged over 21. The first Māori elections are held in 1868.

1934 Waitangi Day is formally celebrated for the first time.

1940 The New Zealand Centennial celebrates the signing of the Treaty of Waitangi as the nation's founding moment, but the celebrations focus mostly on material progress.

1974 Waitangi Day (then known as New Zealand Day) becomes a national holiday.

1975 The Treaty of Waitangi Act establishes the Waitangi Tribunal as an on-going commission of inquiry to hear grievances against the Crown concerning breaches of the Treaty (initially, only those occurring after 1975).

1985 The Waitangi Tribunal is empowered to investigate Treaty claims dating back to 1840. Māori have since lodged numerous claims against the Crown, and a number of major reports have been released and settlements reached.

1986 The State-Owned Enterprises Act is the first of many statutes to refer to the principles of the Treaty of Waitangi. This practice has given the Treaty far-reaching recognition in national and local government.

Olivia Webb - Young Adult Parishioner

SMAYACs Thursday Prayer Group

When: Thursdays @ 6pm

Where: St Mary of the Angels by St Joseph's Altar

All are welcome to join this group of young adults and the young at heart to pray, read and reflect on the Scriptures. This is a great way to strengthen your prayer life and also build relationships and community. Often the evening continues afterwards with of a social catch up.

If you are interested in getting involved with the St Mary of the Angels Young Adults Group, or want to help organise events, or would like more information, please email smayacs@gmail.com

Communio Discussion Group

The first 2012 meeting will be held on Sunday February 12th at 7.15pm in the Presbytery Board Room. The topic is an address by Benedict XVI on 'The Origins of Western Theology and the Roots of European Culture'. Enquiries: leobuchanan@xtra.co.nz or 387 8284 for Mary or Leo Buchanan.

St Vincent de Paul appeal for books

The St Vincent de Paul Book Fair will be held at on Saturday March 10th at St Patrick's College hall, Kilbirnie. Funds raised from the book fair will be used to support the Society's on-going work with people in need in Wellington City. If you have any books, CDs, DVDs or tapes to donate please drop them to 207 Riddiford St, Newtown or call Vic on 3897122 to arrange collection.

Te Tiriti o Waitangi - Timeline

LT McGuinness
BUILDING CONTRACTORS
9 Francis Place,
PO Box 9639, Wellington
Phone (04) 384 8455 Fax (04) 801 8455
Email: ltm@mcguinness.co.nz

Little Peckish
Café
Feeling a little peckish?
Dukes Arcade · Great food, coffee, service
Office catering available
Phone 499 7769 · Mobile 0274 461 650

NEW WORLD
WELLINGTON CITY
279 WAKEFIELD ST.
OPEN 7 DAYS | 7AM - MIDNIGHT
WWW.WGTNCITYNEWWORLD.CO.NZ



Save with the CDF and you'll be helping the needy;
each year all of CDF's operating surplus goes to the
Archdiocese for social caring and pastoral services.

Saving with us helps your Archdiocese.
Call 0800 4 233 233 or visit www.cdf.co.nz



For Your Diaries : 2012

Sunday February 12th, 2pm Pilgrimage to Our Lady's Statue

The annual pilgrimage to Our Lady's Statue will depart from St Patrick's Church, Paraparaumu at 2pm Sunday February 12th. This year's pilgrimage is led by Father Brian O'Connell SM, editor of the Marist Messenger and is open to everybody. Those who are not capable of processing up the hill will be able to participate from the Church via a live-feed from the statue.

Sunday 12th February, 7.30pm, EcoLiturgy

In celebrating the Treaty of Waitangi, we pause to become more aware of threats to our marine environment. The reflection in this liturgy will be led by Jeffery Shima, Associate Professor of Marine Ecology - Victoria University, and Director of the Victoria University Coastal Ecology Lab. If you are interested in helping prepare the liturgies or provide music please contact Margaret Connor: 473 5195 or m.p.connor@paradise.net.nz

Tuesday 14th February 7pm, St Valentine's Day Mass

In recognition of International Marriage Week (12th-19th Feb) there will be an Archdiocesan Mass to celebrate marriage at Sacred Heart Cathedral on St Valentine's Day, 7pm. All welcome.

Wednesday February 15th, 7.30pm, Xaio Ma Concert

Chinese singer Xiao Ma - a mezzo-soprano counter-tenor accompanied by Gregory Squire and Anne Loesser - baroque violins, and Robert Oliver - viola da gamba. A concert of baroque music by Handel and Vivaldi.

Tickets available at www.eventfinder.co.nz \$30 (\$20 concessions) + booking fee.

Friday February 17th, Vigil for the Unborn

St Anne's Catholic Church, Emmett Street, Newtown. Starts with Mass at 7pm followed by Exposition of the Blessed Sacrament until 9.00 pm. Includes the option of going on a rosary procession during Exposition. Organised by Family Life International ph. 2378343. www.fli.org.nz

Saturday February 18th, Dove Catholic Fellowship for Women Speaker Jan Balcombe from Ruawai, Northland will share: 'Her walk on the wild side and God restoring her'. All women welcome to join us for Praise, Worship, Teaching and Fellowship. 1.30pm - 3.30pm Connolly Hall Guildford Terrace (off Hill St) Thorndon. Enquiries: Sandra 475 5541 www.dove.org.nz

Traditional Latin Mass each Sunday of February, 12.30pm at St Mary of the Angels. Contact Neil Coup 021 896 924

Quality Te Aro Offices

5-7 Vivian Street, Wellington

Great location close to Cafe district
Busy arterial road
Air conditioned
Car parking available

Office suites available at an affordable price. Semi-serviced suites (approx 18sqm) that are fully furnished. There is also a company floor area (approx 200sqm) with 5x partitioned offices, Board room and Meeting room. Shared kitchen and shower facilities. Car parking available in the building at an additional rate.

This is a must see for new businesses on a budget.

Contact by e-mail for further information: mariabaldock@gmail.com

This newsletter is kindly sponsored by:

Michael Burrowes
of Burrowes and Company
Barristers and Solicitors
phone (04) 473 7733

BURROWES
and Company

Barristers and Solicitors



A1 Auto Electrical Limited

17 -19 Webb Street, Wellington
Phone 384 2215

All Electrical Repairs
ABS and Air Bag Faults

Please Support our Sponsors

INTRODUCING The Rosary Card with our compliments

Easy reference to regularly used Rosary Prayers is now available on the Rosary Card. Small enough to double as a bookmark the Rosary Card can be left within prayer or hymn books, for re-use or can be taken home for personal use. The Rosary Card features five regularly used prayers:

The Our Father, The Hail Mary, Doxology, The Apostles Creed, Hail Holy Queen.

Available free upon request. Simply call and we will send the quantity you require.



Harbour City
FURNERAL HOME

56 Onepu Road,
Kilbirnie
Telephone 3878-301

Members of Funeral Directors Association of New Zealand.

WEST PLAZA HOTEL

LOCATION • COMFORT • STYLE

Weekend Special \$120

One night's stay & cooked breakfast for two
Available Friday, Saturday and Sunday
Subject to availability

110 - 116 Wakefield Street, Wellington
p 0800 731 444
e reservations@westplaza.co.nz
book now westplaza.co.nz



Bullement.Fortune Architects Ltd

Proud to be architects for the interior and exterior refurbishment of St Mary of the Angels

Registered Architect: Denis Fortune

3 Francis Place Te Aro
WELLINGTON
Ph: 04 385 0286

Email: bullement.fortune@xtra.co.nz



Christian Supplies

www.christiansupplies.co.nz

- See our monthly newsletter in 'The Angelus'
- Freephone 0508 988 988 - Freefax 0508 988 989
email: order@pleroma.org.nz

The Angelus

St Mary of the Angels Parish

Church and Presbytery:

17 Boulcott Street,

Wellington Central

Telephone: 473 8074

Parish website: www.smoa.org.nz

St Mary of the Angels is a diverse community which seeks to praise and thank God in a place of calm and beauty and strives to be Christ alive in Central Wellington

Parish Priest

Fr Barry Scannell SM
smoapp@xtra.co.nz

Assistant Priest

Fr Tom O'Connor SM

Adult Education

Fr Michael Young SM

Pastoral Worker

Sr Frances Gibbs CSB

Director of Music

Robert Oliver
robert.oliver@paradise.net.nz

Parish Manager

Penny Holden
smoamanager@xtra.co.nz

Parish Office

smoaoffice@xtra.co.nz

MASSES

Sunday 7am, 9am, 11am, 5pm

Monday to Friday 7.30am, 12:05pm, & 5:15pm

Saturday 11am

EACH MONTH

1st Saturday Marian Devotions 10:30am

4th Saturday 11am Mass with Sacrament of Anointing

ADORATION

Monday to Friday 7:00-7:30am

Friday 11am- noon

RECONCILIATION

Monday to 11:30am - 12pm

Thursday 12:30-1pm, 4:30-5pm

Saturday 10:30-11am, 4:00-5:00pm

5th February 2012: 5th Sunday in Ordinary Time Year B

Waitangi Day

Tomorrow we celebrate Waitangi Day. The Archdiocesan Waitangi Day Mass will be held in St Mary of the Angels Church at 9am. Archbishop John will be the main celebrant.

Please make an effort to attend this Mass as the Parish hosts the Maori communities of Te Ngakau Tapu from Porirua and Te Kainga from Kilbirnie. After the Mass there will be morning tea in the Parish Hall. If you are able to provide a plate of food to nourish our visitors please leave it in the Hall before Mass.

Pastoral Area Sacramental Programme

Enrolments are now being accepted for the Pastoral Area Sacramental Programme which begins on Tuesday 28th February. The three sacraments of Reconciliation, Confirmation and First Holy Communion are being offered to children in Year 4 and above. The preparation for these sacraments is co-ordinated by our Pastoral Area; St Joseph's, St Bernard's and St Mary of the Angels.

Enrolment forms are on the tables at the back and side doors of the Church. Please complete these and give them to one of the priests or bring them to the Parish Office. For further information please contact Bede Clarke on 478 4202.

Change of date - Prayer and Reflection Morning now 17 March

The date for the Prayer and Reflection Morning at St Mary of the Angels which was to be held on Saturday 11th February, is now to be held on **Saturday, 17th March from 8.30am - 10.30am in the Parish Hall.**

As well as an opportunity for spiritual reflection, it will also help us to prepare for the Easter Liturgies, particularly for those who are Proclaimers of the Word (Readers) and those who are Extraordinary Ministers of Holy Communion.

The change in date is due to a Liturgy Workshop involving St Mary of the Angels and other Parishes in the Wellington Archdiocese, which has been rescheduled for 11th February.

The work of serving and supporting our Parish Community involves everyone and we are each asked to commit these meetings and workshops to prayer.

Father Barry Scannell sm
Parish Priest

INVEST IN YOUR FAITH

CATHOLIC DEVELOPMENT FUND of WELLINGTON