

## For Your Diaries : 2011 and 2012

**Friday 6th January 2012, Hearts Aflame Catholic Summer School, Nga Tawa College, Marton.** This is a ten day Catholic summer school that is open to young adults aged 18 to 35. To register, for more information or to make a donation please visit their website: [www.heartsaflame.org.nz](http://www.heartsaflame.org.nz)

**Sunday 8th January 2012 Commemoration of Bishop Pompallier's First Mass in New Zealand 11am.** You are invited to visit Totara Point, Northland in the Hokianga (the site of the first Catholic Mass in New Zealand). After Mass at Totara Point visitors are invited to Motuti, where Bishop Pompallier's remains are interred. The church will be open all day.

### 24-26 February 2012 Rachel's Vineyard Retreat (Wellington)

A weekend Retreat of spiritual and emotional healing for those whose lives have been touched by abortion. All enquiries are strictly confidential. Contact Wendy Hill 027 254 9222 or [info@rachelsvineyard.org.nz](mailto:info@rachelsvineyard.org.nz)

### Pilgrimages to Pukekaraka, Otaki, 2012.

The Pa Maria Retreat and Spirituality Centre team is offering Wellington parishioners a prayerful day in Pukekaraka next year, a site of significant Catholic history of the Wellington Archdiocese. If you would like to be on one of these trips (18th & 25th February, 7th, 25th & 31st March) please contact Pa Maria: 04 472 2734.

**Saturday 10th March 2012 St Catherine's College Art and Craft Fair** St Catherine's College PTA is collecting art and craft items for this fundraising effort in 2012. Phone 388 5887 if you have any items to be collected.

**Traditional Latin Mass** each Sunday of December, 12.30pm at St Mary of the Angels. Contact Neil Coup 021 896 924

*May the Peace of the Christ Child be with you and your family this Christmas*

### Quality Te Aro Offices

5-7 Vivian Street, Wellington

Great location close to Cafe district  
Busy arterial road  
Air conditioned  
Car parking available

Office suites available at an affordable price. Semi-serviced suites (approx 18sqm) that are fully furnished. There is also a company floor area (approx 200sqm) with 5x partitioned offices, Board room and Meeting room. Shared kitchen and shower facilities. Car parking available in the building at an additional rate.

This is a must see for new businesses on a budget.

Contact by e-mail for further information: [mariabaldock@gmail.com](mailto:mariabaldock@gmail.com)

This newsletter is kindly sponsored by:

Michael Burrowes  
of Burrowes and Company  
Barristers and Solicitors  
phone (04) 473 7733

**BURROWES**  
and Company

Barristers and Solicitors



**A1 Auto Electrical Limited**

17 -19 Webb Street, Wellington  
Phone 384 2215

All Electrical Repairs  
ABS and Air Bag Faults

## Please Support our Sponsors

### INTRODUCING The Rosary Card with our compliments

Easy reference to regularly used Rosary Prayers is now available on the Rosary Card. Small enough to double as a bookmark the Rosary Card can be left within prayer or hymn books, for re-use or can be taken home for personal use. The Rosary Card features five regularly used prayers: The Our Father, The Hail Mary, Doxology, The Apostles Creed, Hail Holy Queen. Available free upon request. Simply call and we will send the quantity you require.



The Rosary Card  
© Harbour City Funeral Home



56 Onepu Road,  
Kilbirnie  
Telephone 3878-301

Members of Funeral Directors Association of New Zealand.

### WEST PLAZA HOTEL

LOCATION • COMFORT • STYLE

#### Weekend Special \$120

One night's stay & cooked breakfast for two  
Available Friday, Saturday and Sunday  
Subject to availability

110 - 116 Wakefield Street, Wellington  
p 0800 731 444

e [reservations@westplaza.co.nz](mailto:reservations@westplaza.co.nz)  
book now [westplaza.co.nz](http://westplaza.co.nz)



Bullement Fortune Architects Ltd

Proud to be architects for the interior and exterior refurbishment of St Mary of the Angels

Registered Architect: Denis Fortune

3 Francis Place Te Aro  
WELLINGTON  
Ph: 04 385 0286

Email: [bullement.fortune@xtra.co.nz](mailto:bullement.fortune@xtra.co.nz)



**Christian Supplies**

[www.christiansupplies.co.nz](http://www.christiansupplies.co.nz)

- See our monthly newsletter in 'The Angelus'  
- Freephone 0508 988 988 - Freefax 0508 988 989  
email: [order@pleroma.org.nz](mailto:order@pleroma.org.nz)

# The Angelus

St Mary of the Angels Parish

**Church and Presbytery:**  
17 Boulcott Street,  
Wellington Central  
**Telephone: 473 8074**  
**Parish website: [www.smoa.org.nz](http://www.smoa.org.nz)**

*St Mary of the Angels is a diverse community which seeks to praise and thank God in a place of calm and beauty and strives to be Christ alive in Central Wellington*

25th December 2011: Christmas Day, Year B

#### Parish Priest

Fr Barry Scannell SM  
[smoapp@xtra.co.nz](mailto:smoapp@xtra.co.nz)

#### Assistant Priest

Fr Tom O'Connor SM

#### Adult Education

Fr Michael Young SM

#### Pastoral Worker

Sr Frances Gibbs CSB

#### Director of Music

Robert Oliver  
[robert.oliver@paradise.net.nz](mailto:robert.oliver@paradise.net.nz)

#### Parish Manager

Penny Holden  
[smoamanager@xtra.co.nz](mailto:smoamanager@xtra.co.nz)

#### Parish Office

[smoaooffice@xtra.co.nz](mailto:smoaooffice@xtra.co.nz)

#### MASSES

Sunday 7am, 9am, 11am, 5pm

Monday to Friday 7.30am, 12:05pm, & 5:15pm

Saturday 11am

#### EACH MONTH

1st Saturday Marian Devotions 10:30am

4th Saturday 11am Mass with Sacrament of Anointing

#### ADORATION

Monday to Friday 7:00-7:30am

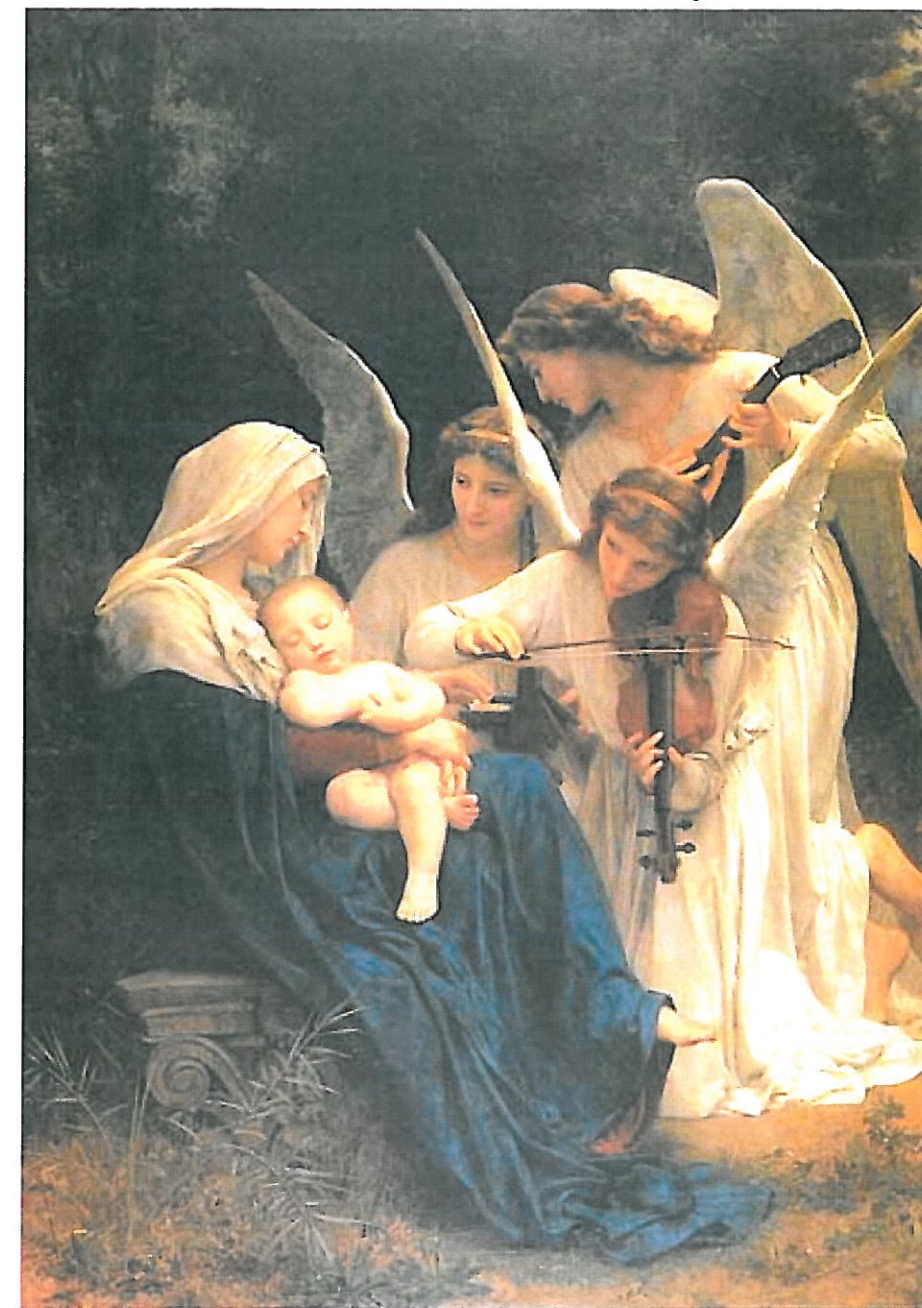
Friday 11am- noon

#### RECONCILIATION

Monday to 11:30am - 12pm

Thursday 12:30-1pm, 4:30-5pm

Saturday 10:30-11am, 4:00-5:00pm



Three angels playing music for Mother Mary and baby Jesus by Bouguereau

# INVEST IN YOUR FAITH

CATHOLIC DEVELOPMENT FUND of WELLINGTON



## This Week's Readings

### Christmas Day Mass

**First Reading** Isaiah 52:7-10

*All the ends of the earth shall see the saving power of our God.*

**Second Reading** Hebrews 1:1-6

*In our own, God speaks to us through his Son.*

**Gospel Reading** John 1:1-18

*The Word of God became flesh and dwelt among us, and we saw his glory.*

## Next Week's Readings

First Reading Genesis 15:1-6, 21:1-3

Psalm 104

Second Reading Hebrews 11:8, 11-12, 17-19

Gospel Luke 2:22-40

## Last Sunday's Collection

Total	\$4,440
Parish Expenses	\$3,152
Support of House	\$1,288

*Thank You*

## Catholic Discipleship College

CDC is a year long programme which provides Christian formation in an environment of Catholic spirituality, prayer, scripture, study and community life. Our aim is to strengthen and deepen our students' faith in God and equip and call individuals into active responsible participation in the life of the Church.

CDC is now accepting applications from Catholic men and women for the 2012 year. For more information, or make a donation phone (09) 48908197 or visit the website [www.cdc.ac.nz](http://www.cdc.ac.nz)

## Mass has been offered for:

**Recently Deceased** Fr Sean Hanaray FMS

**Anniversaries** Kura Turner, Mary Hutchens, Margaret Heister, James Glover, Edward Haughey, Margaret Phillpot, Helen McKone, Paul Giles

**Prayers for the Sick** Robert Clark, Jimmy Biton, Kieran St Clair, Maryvac de Rosario, Mary Egan, Dulcie Campbell, Oinah Macpherson, Maureen McDonald, Ron Blair, Paul Carr, Peter Tawhaki, Cecilia Dickson, Maria Kasperowicz, Marion Hyland, Helen Havasi, Desmond Nunns, Patricia Smyth, Ron Finlayson, Vicki McPhee, Pat Perkins, Romola Sullivan, Bryan Stempa, Patrick Grace.  
*Please remember in your prayers, these and the other sick of the Parish. If you know of anyone who is confined to their home or who needs a visit with Holy Communion, please contact Sister Frances at the Parish Office. Phone 473 8074*



## Responsorial Psalm 97

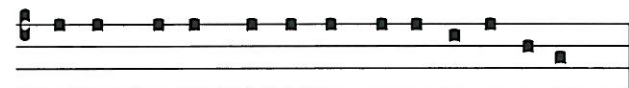
**R. All the ends of the earth have seen the saving power of God.**

Sing a new song to the Lord  
for he has worked wonders.  
His right hand and his holy arm  
have brought salvation. **R**

The Lord has made known his salvation;  
has shown his justice to the nations.  
He has remembered his truth and love  
for the house of Israel. **R**

All the ends of the earth have seen  
the salvation of our God.  
Shout to the Lord all the earth,  
ring out your joy. **R**

Sing psalms to the Lord with the harp,  
with the sound of music.  
With trumpets and the sound of the horn  
acclaim the King, the Lord. **R**

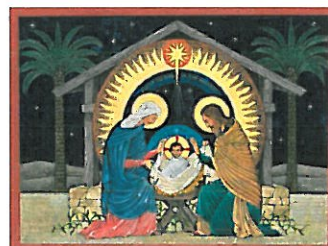


No-tum fe-cit Domi-nus sa-lu-ta-re su-um.

*The Lord hath made known His salvation*

## Offertory Hymn For 11am Mass

Number 299:  
Unto us a boy is born.



## Reflection: Gifts Differing

A challenge which seems to have made the journey from *Trivial Pursuit*, the quiz game which used to divide families at Christmas time, to its contemporary counterpart *Who Wants to be a Millionaire* on DVD, is to name the Three Kings and the gifts they brought to the child Jesus. Most people can recall gold, frankincense and myrrh as the gifts, but fewer achieve the names Melchior, Gaspar and Balthazar, which by convention, the Magi are known.

While shepherds were the first witnesses to the birth of Christ, the Three Kings were not far behind. Theirs is a story of great faith. To get to Bethlehem the place where they would find Jesus, Mary and Joseph, they had to trust what had been revealed to them in prayer and what they had learned of astronomy, assemble a caravan of camels and servants, travel some great distance and endure the trickery of King Herod. Their faith was rewarded. They found the infant Jesus and the bringing of gifts to Christ is now an established tradition.

We may not automatically connect an act of service in our Parish with the offering of the Magi, but we honour and serve the Christ among us in all that we do. Among the seen and unseen gifts in St Mary of the Angels Parish this year has been the work of:

- Those who have the responsibility of serving on the Parish Council, the Finance Committee, Restoration and Maintenance Committee, Trustees of the Friends of St Mary of the Angels Charitable Trust and a range of other *ad hoc* entities which ensure prudent management of the resources entrusted to the Parish
- The Society of St Vincent de Paul and the Social Justice groups supporting those in need in our wider parish community
- The Liturgy Committee in their preparing and planning for our public celebrations of worship
- The Choirs and Musicians. Those who share and develop their musical talents add tremendous richness to the Liturgy and help collect everyone together in prayer
- Those who Proclaim the Word and who act as Extraordinary Ministers of Holy Communion. Theirs is a particular work of being present to Christ through their voice and their hands



*The Magi bearing gifts, by Andrea Mantenga c1500*

- The Altar Servers, whose care and respectfulness reflects the dignity of all present at the Mass, along with those who meet and greet parishioners and visitors, who distribute and collect the hymn books, take up the collection and the offerings of food and gifts and count the collection
- Those who give their time and skills to organise groups and activities for young adults and RCIA candidates
- Wider Parish communities for their Ministry support
- Those who clean and maintain the Church, who care for the linen and maintain the grounds
- Those Guardians whose prayerful presence allows the Church to remain open during the day
- Those who work in the Parish Office, those involved in Sacramental programmes and those members of the Marist Community who make their home with us.

We might reflect with gratitude on our 'gifts differing'. It is, at a glance, a very rich list.

*Suzanne O'Rourke, Liturgy Committee*

**LT McGuinness**  
BUILDING CONTRACTORS  
9 Francis Place,  
PO Box 9639, Wellington  
Phone (04) 384 8455 Fax (04) 801 8455  
Email: [ltm@mcguinness.co.nz](mailto:ltm@mcguinness.co.nz)

**Little Peckish**  
Cafe  
Feeling a little peckish?  
Dukes Arcade • Great food, coffee, service  
Office catering available  
Phone 499 7769 • Mobile 0274 461 650

**NEW WORLD**  
WELLINGTON CITY  
279 WAKEFIELD ST.  
OPEN 7 DAYS | 7AM - MIDNIGHT  
[WWW.WGTNCITYNEWWORLD.CO.NZ](http://WWW.WGTNCITYNEWWORLD.CO.NZ)



Save with the CDF and you'll be helping the needy; each year all of CDF's operating surplus goes to the Archdiocese for social caring and pastoral services.

Saving with us helps your Archdiocese.  
Call 0800 4 233 233 or visit [www.cdf.co.nz](http://www.cdf.co.nz)

