

This Week's Readings

| | | |
|--|---------------|----------------------------|
| First Reading | Samuel | 7:1-5, 8-12, 14, 16 |
| <i>The Kingdom of David will be established for ever in the sight of the Lord.</i> | | |
| Second Reading | Romans | 16:25-27 |
| <i>The mystery kept secret for endless ages is now revealed.</i> | | |
| Gospel Reading | Luke | 1:26-38 |
| <i>You will conceive and bear a son.</i> | | |

Next Week's Readings

| | | |
|----------------|---------|-----------------------|
| First Reading | Isaiah | 62:1-5 |
| | Psalm | 88:4-5, 16-17, 27, 29 |
| Second Reading | Acts | 13:16-17, 22-25 |
| Gospel | Matthew | 1:1-25 |

Last Sunday's Collection

| | |
|------------------|---------|
| Total | \$4,385 |
| Parish Expenses | \$3,113 |
| Support of House | \$1,272 |

Thank You

St Mary of the Angels Christmas Cards

We have once again this year produced Christmas cards of the beautiful Nativity Window in the Church. The cards are high quality and have been finished with a gloss laminated front cover. They come in three sizes and with envelopes. The cards will be on sale after all Masses today and are available at the Parish Office.

- A6 (\$15 for a pack of 12)
- DLE (\$15 for a pack of 12)
- A5 (\$1.50 each)

Columban Calendars for 2012 are also available for purchase from the Parish Office.

Mass has been offered for:

Recently Deceased Neil Campbell, Philip Cottrell

Anniversaries Shona Rippon, Margherita Ray

Prayers for the Sick

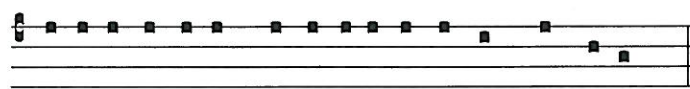


Kieran St Clair, Maryvac de Rosario, Mary Egan, Dulcie Campbell, Oinah Macpherson, Maureen McDonald, Ron Blair, Paul Carr, Peter Tawhaki, Cecilia Dickson, Maria Kasperowicz, Marion Hyland, Helen Havasi, Desmond Nunns, Patricia Smyth, Ron Finlayson, Vicki McPhee, Pat Perkins, Romola Sullivan, Bryan Stempa, Patrick Grace.

Please remember in your prayers, these and the other sick of the Parish. If you know of anyone who is confined to their home or who needs a visit with Holy Communion, please contact Sister Frances at the Parish Office. Phone 473 8074

Responsorial Psalm 88

R. For ever I will sing the goodness of the Lord
 I will sing forever of your love, O Lord;
 through all ages my mouth will proclaim your truth.
 Of this I am sure, that your love lasts for ever,
 that your truth is firmly established as the heavens. **R**
 'I have made a covenant with my chosen one;
 I have sworn to David my servant:
 I will establish your dynasty for ever
 and set up your throne through all ages.' **R**
 He will say to me: 'You are my father,
 my God, the rock who saves me.'
 I will keep my love for him always;
 for him my covenant shall endure. **R**



Mi-se-ri-cordi- as Domi-ni in aeternum can tabo.-

The mercies of the Lord I will sing forever.

Offertory Hymn For 11am Mass

Number 238 'O come, O come Emmanuel' v 1, 5, 6, 7.

Thank You

Thank you to the women who helped clean the Church last Friday in preparation for our Carols with the Angels service and for the Christmas season.
 Thank you also, to the group who helped with the supper for the musicians after Carols with the Angels and to those who supplied plates of food to nourish our guests.

Reflection: Face-time, not Facebook

There are many witty answers to the question of what Christmas gift to give someone who has 'everything'; a retro-Make Poverty History bracelet, another goat to an African village or a weekend experience at one of the 'Occupy' camp sites in our larger cities? Given the age in which we live, technology or something to do with the pursuit of leisure is a likely bet. Christmas cards, however, still hold their place among emails and Facebook friends must fit around family arrangements.



So what of Christmas this year? Among the upheavals of earthquake, tsunami, ash cloud, economic recession and financial collapse, the celebrations and re-thinking of winners and losers on and off fields of contest, the simplicity of getting family and friends together for a celebration of 'the real Christmas' seems for many, all they can manage.

Family gatherings often reveal deep truths. In the months before the birth of Jesus, Mary went to visit her cousin Elizabeth who was pregnant with John the Baptist. Theirs is a story of great friendship; each woman recognising in the other, the work of the Holy Spirit. When the unborn John the Baptist sensed the Christ carried by Mary, he leapt with joy. Elizabeth's beautiful 'Hail Mary' captures the moment and is followed by Mary's perfect rejoinder, the 'Magnificat'. Since then, all ages have called Mary 'Blessed' and the Almighty continues to do great things for us.

There is something deeply enriching about the friendship of women and men of faith. While Mary has a very particular role in the world's salvation history, her vocational call, along with Elizabeth's, was played out in the natural setting of family, friendship and the traditions of her faith community.

It is futile to speculate on what might have transpired if either one had shied away from God's invitation to participate in his work. Suffice to say the call to live in unity with the Holy Spirit, filled with love, full of grace was, and always will be, deeply compelling.

Small wonder that Mary wanted to be with Elizabeth, rather than stay home and send a message. To carry our Christ through Advent is to be in possession of a wonderful mystery, one that longs to be shared.

Suzanne O'Rourke, Liturgy Committee

Catholic Discipleship College

CDC is a year long programme which provides Christian formation in an environment of Catholic spirituality, prayer, scripture, study and community life. Our aim is to strengthen and deepen our students' faith in God and equip and call individuals into active responsible participation in the life of the Church.

CDC is now accepting applications from Catholic men and women for the 2012 year. For more information, or make a donation phone (09) 48908197 or visit the website www.cdc.ac.nz

Prayer for the Cause of Suzanne Aubert

New Zealand's seven Bishops are presently in Rome for their Ad Limina visit. During their visit they will meet with the congregation for the Causes of Saints to discuss the Cause of Suzanne Aubert. The Bishops and the Sisters of Compassion encourage you to take a copy of the Prayer for the Cause of Suzanne Aubert with you after Mass. It is also available online at www.catholic.org.nz under 'Story'.

The prayer cards are available on the tables at the entrance to the Church.



Suzanne Aubert, caring for a sick baby in the orphanage. Wellington 1899.

LT McGuinness
BUILDING CONTRACTORS LIMITED
 9 Francis Place,
 PO Box 9639, Wellington
 Phone (04) 384 8455 Fax (04) 801 8455
 Email: ltm@mcguinness.co.nz

Little Peckish
Café
Feeling a little peckish?
 Dukes Arcade • Great food, coffee, service
 Office catering available
 Phone 499 7769 • Mobile 0274 461 650

NEW WORLD
WELLINGTON CITY
 279 WAKEFIELD ST.
 OPEN 7 DAYS | 7AM - MIDNIGHT
WWW.WGTNCITYNEWWORLD.CO.NZ

CDF
 Catholic Development Fund of Wellington

Save with the CDF and you'll be helping the needy;
 each year all of CDF's operating surplus goes to the
 Archdiocese for social caring and pastoral services.

Saving with us helps your Archdiocese.
 Call 0800 4 233 233 or visit www.cdf.co.nz



For Your Diaries : 2011 and 2012

Thursdays in Advent Meditations after midday Mass

Advent meditations will be held in the Church immediately after the midday Mass each Thursday for approximately 10-15 minutes. All welcome.

Catholic Social Services Christmas Appeal. You are invited to make a donation of Christmas food items and/or gifts for children, youth and single adults. Please contact Cathy Agnew or Trish Heward (04) 385 8642 or drop off items to Catholic Social Services, 152 Brougham St, Mt Victoria.

Friday 6th January 2012, Hearts Aflame Catholic Summer School, Nga Tawa College, Marton. This is a ten day Catholic summer school that is open to young adults aged 18 to 35. To register, for more information or to make a donation please visit their website: www.heartsaflame.org.nz

Sunday 8th January 2012 Commemoration of Bishop Pompallier's First Mass in New Zealand 11am. You are invited to visit Totara Point, Northland in the Hokianga (the site of the first Catholic Mass in New Zealand). After Mass at Totara Point visitors are invited to Motuti, where Bishop Pompallier's remains are interred. The church will be open all day.

24-26 February 2012 Rachel's Vineyard Retreat (Wellington)

A weekend Retreat of spiritual and emotional healing for those whose lives have been touched by abortion. All enquiries are strictly confidential. Contact Wendy Hill 027 254 9222 or info@rachelvineyard.org.nz

Pilgrimages to Pukekaraka, Otaki, 2012.

The Pa Maria Retreat and Spirituality Centre team is offering Wellington parishioners a prayerful day in Pukekaraka next year, a site of significant Catholic history of the Wellington Archdiocese. If you would like to be on one of these trips (18th & 25th February, 7th, 25th & 31st March) please contact Pa Maria: 04 472 2734.

Saturday 10th March 2012 St Catherine's College Art and Craft Fair
St Catherine's College PTA is collecting art and craft items for this fundraising effort in 2012. Phone 388 5887 if you have any items to be collected.

Traditional Latin Mass each Sunday of December, 12.30pm at St Mary of the Angels. Contact Neil Coup 021 896 924

Quality Te Aro Offices 5-7 Vivian Street, Wellington

Great location close to Cafe district
Busy arterial road
Air conditioned
Car parking available

Office suites available at an affordable price. Semi-serviced suites (approx 18sqm) that are fully furnished. There is also a company floor area (approx 200sqm) with 5x partitioned offices, Board room and Meeting room. Shared kitchen and shower facilities. Car parking available in the building at an additional rate.

This is a must see for new businesses on a budget.

Contact by e-mail for further information: mariabaldock@gmail.com

This newsletter is kindly sponsored by:
Michael Burrowes
of Burrowes and Company
Barristers and Solicitors
phone (04) 473 7733

BURROWES and Company

Barristers and Solicitors



A1 Auto Electrical Limited

17 -19 Webb Street, Wellington
Phone 384 2215

All Electrical Repairs
ABS and Air Bag Faults

Please Support our Sponsors

INTRODUCING The Rosary Card with our compliments

Easy reference to regularly used Rosary Prayers is now available on the Rosary Card. Small enough to double as a bookmark the Rosary Card can be left within prayer or hymn books, for re-use or can be taken home for personal use. The Rosary Card features five regularly used prayers:

The Our Father, The Hail Mary, Doxology, The Apostles Creed, Hail Holy Queen.

Available free upon request. Simply call and we will send the quantity you require.



The Rosary Card
© Harbour City Funeral Home

56 Onepu Road,
Kilbirnie
Telephone 3878-301

Members of Funeral Directors Association of New Zealand.

WEST PLAZA HOTEL LOCATION • COMFORT • STYLE

Weekend Special \$120

One night's stay & cooked breakfast for two
Available Friday, Saturday and Sunday
Subject to availability

110 - 116 Wakefield Street, Wellington
p 0800 731 444
e reservations@westplaza.co.nz
book now westplaza.co.nz



Bullyment Fortune Architects Ltd

Proud to be architects for the interior and exterior refurbishment of St Mary of the Angels

Registered Architect: Denis Fortune

3 Francis Place Te Aro
WELLINGTON
Ph: 04 385 0286

Email: bullyment.fortune@xtra.co.nz



Christian Supplies

www.christiansupplies.co.nz

- See our monthly newsletter in 'The Angelus'
- Freephone 0508 988 988 - Freefax 0508 988 989
email: order@pleroma.org.nz

The Angelus

St Mary of the Angels Parish

Church and Presbytery:

17 Boulcott Street,
Wellington Central

Telephone: 473 8074

Parish website: www.smoa.org.nz

St Mary of the Angels is a diverse community which seeks to praise and thank God in a place of calm and beauty and strives to be Christ alive in Central Wellington

Parish Priest

Fr Barry Scannell SM
smoapp@xtra.co.nz

Assistant Priest

Fr Tom O'Connor SM

Adult Education

Fr Michael Young SM

Pastoral Worker

Sr Frances Gibbs CSB

Director of Music

Robert Oliver
robert.oliver@paradise.net.nz

Parish Manager

Penny Holden
smoamanager@xtra.co.nz

Parish Office

smoaoffice@xtra.co.nz

MASSES

Sunday 7am, 9am, 11am, 5pm

Monday to Friday 7.30am, 12:05pm,
& 5:15pm

Saturday 11am

EACH MONTH

1st Saturday Marian Devotions
10:30am

4th Saturday 11am Mass with
Sacrament of Anointing

ADORATION

Monday to Friday 7:00-7:30am

Friday 11am- noon

RECONCILIATION

Monday to Thursday 11:30am - 12pm
12:30-1pm, 4:30-5pm

Saturday 10:30-11am, 4:00-5:00pm

18th December 2011: 4th Week of Advent, Year B

Make them Welcome

Many of those who attend Mass at Christmas and Easter would like to go at other times, but feel awkward about doing so. Often all they need is a sincere invitation and warm welcome.

There has always been the emergence of religious sentiment at Christmas in the hearts of many otherwise rather diffident Catholics; but it is difficult to benefit from this alone. There will be many people who attend Mass at St Mary of the Angels this Christmas who only come occasionally. This is an opportunity for us to give these people the message that they are always welcome. Perhaps we could:

- invite someone who does not go to Church regularly to come and celebrate Christmas Mass with us.
- give people the message that they are always welcome – whoever they are, wherever they have been.
- make sure we communicate what the Church believes; that these people are loved by God and will be accepted happily by the community.

If we are able to do these things then those who perhaps want to return on a more regular basis to the practice of their faith, will feel that St Mary of the Angels welcomes them.

New Year Vigil, New Year's Eve

This year there will be a New Year's Eve liturgy to celebrate the coming of the New Year. It will begin at 11:30pm, New Year's Eve, and will last for an hour. It will consist of Gregorian Chant, and readings chosen by the late Fr Ken Scully, whom many will remember with great affection. There will be no Mass at midnight. We need a reader for the Scripture passages, and to lead the prayers. Members of the choir will sing the chants, there are hymns for all to sing, and the Church will be lit by candlelight. Join us to sing out the old and sing in the new with the ancient songs and prayers of the Church. If you could be available to read, please contact our musical director: robert.oliver@paradise.net.nz

Father Barry Scannell sm
Parish Priest

INVEST IN YOUR FAITH

CATHOLIC DEVELOPMENT FUND of WELLINGTON