

This Week's Readings

First Reading Isaiah 61:1-2, 10-11

I exult for joy in the Lord.

Second Reading St Paul 5:16-24

May you all be kept blameless, spirit, soul and body, for the coming of our Lord Jesus Christ.

Gospel Reading John 1:6-8, 19-28

There stands among you, unknown to you, the one who is coming after me.

Next Week's Readings

First Reading Samuel 7:1-5, 8-12, 14, 16

Psalm 88:2-5, 27, 29

Second Reading Rms 16:25-27

Gospel Luke 1:26-38

Last Sunday's Collection

Total	\$4,110
Parish Expenses	\$2,918
Support of House	\$1,192

Thank you

St Mary of the Angels Christmas Cards

We have once again this year produced Christmas cards of the beautiful Nativity Window in the Church. The cards are high quality and have been finished with a gloss laminated front cover. They come in three sizes and with envelopes. The cards will be on sale after all Masses today and are available at the Parish Office.

A6 (\$15 for a pack of 12)

DLE (\$15 for a pack of 12)

A5 (\$1.50 each)

Columban Calendars for 2012 are also available for purchase from the Parish Office.

Mass has been offered for:

Recently Deceased Neil Campbell

Anniversaries Maurice O'Brien, Janina Knapp, Dorothy Martin, Daniel McKone

Prayers for the Sick Maryvac de Rosario, Mary Egan, Dulcie Campbell, Oinah Macpherson, Maureen McDonald, Ron Blair, Paul Carr, Peter Tawhaki, Cecilia Dickson, Maria Kasperowicz, Marion Hyland, Helen Havasi, Desmond Nunns, Patricia Smyth, Ron Finlayson, Vicki McPhee, Pat Perkins, Romola Sullivan, Bryan Stempa, Patrick Grace.



Please remember in your prayers, these and the other sick of the Parish. If you know of anyone who is confined to their home or who needs a visit with Holy Communion, please contact Sister Frances at the Parish Office. Phone 473 8074

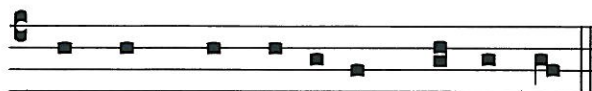
Responsorial Psalm (Lk)1:46-50, 53-54

R. My soul rejoices in my God

My soul glorifies the Lord,
my spirit rejoices in God, my Saviour.
He looks on his servant in her nothingness;
henceforth all ages will call me blessed. **R.**

The Almighty works marvels for me.
Holy his name!
His mercy is from age to age,
on those who fear him. **R.**

He fills the starving with good things,
sends the rich away empty.
He protects Israel, his servant,
remembering his mercy. **R.**



Gaudens gaudebo in Domi-no.

Rejoicing I rejoice in God

Offertory Hymn For 11am Mass

Number 109 *'Tell out my Soul'*

Catholic Social Services Christmas Appeal

Every Christmas, Catholic Social Services endeavour to support the families and children they work alongside by giving them something toward their Christmas celebrations. You are invited to make a donation of Christmas food items and/or gifts for children, youth and single adults. Please contact Cathy Agnew or Trish Heward (04) 385 8642 or drop off items to Catholic Social Services, 152 Brougham St, Mt Victoria.

Thank you in advance for your generosity!

Earthquake Strengthening at St Mary of the Angels

All of us have been reminded in the last year of the fact that we live in a country which is prone to the forces of nature. At the present time there is a great deal of focus on Christchurch and the aftermath of the devastation caused especially by the earthquake last February. I thought it timely to update the Parish community on the planning for the strengthening of St Mary of the Angels Church and the Presbytery building.

In 2008 (like hundreds of other building owners in Wellington) we were told by the City Council that our Presbytery and Church did not meet the current seismic code. Like other building owners we have been given 15 years to strengthen both the Church and the Presbytery.

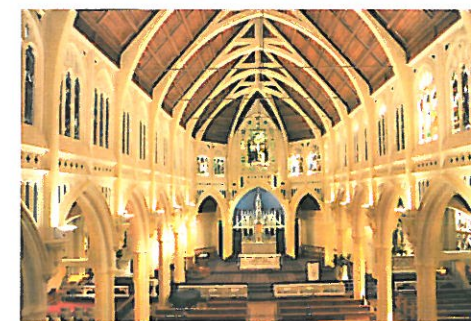
The Parish Restoration and Maintenance Committee have been working on this challenge for the past two years. Earlier this year the first stage of the upgrade of the Presbytery building was completed (Floors 2 and 3 – where the Marist community live). This work included significant seismic strengthening. In 2012 we will embark on a major fundraising effort and we pray that sufficient funds will be raised for this project to be completed during the second half of next year. The work involved in the second stage is on the 1st floor (Parish Office and Meeting rooms) and on the ground floor which contains the Parish Hall. Once this has been completed the Presbytery building will meet the current earthquake standard.

As you can imagine strengthening of the Church is a far greater challenge and will cost several million dollars. The Restoration and Maintenance Committee have spent an enormous amount of time, effort and expertise in looking at and studying various options in seeking the possible best way to seismically strengthen our beautiful Church so that the architecture and ambience are retained. Because it is listed as a Category A Historic Place any work must have the prior approval of a Conservation Architect.

The planning for the seismic strengthening is nearly complete and it is hoped by 31 January 2012 that two options can be presented to the Archdiocese. I wish to sincerely thank the Chairman of the Committee, Brian McGuinness, our engineer Arthur Park and our architect Denis Fortune for their untiring efforts in getting the project to this point. Once the options are presented to the Archdiocese decisions need to be made on which option is the best one and to establish how the work will be funded.

Meanwhile, like many buildings around Wellington we live with the fact that our Presbytery and Parish Church are designated as buildings that could possibly be earthquake prone. Be assured that we will continue to focus every effort to bring these buildings up to the best seismic standard as soon as possible. We want our beautiful Church to always remain **'an oasis in the middle of a busy city'** for future generations of parishioners and for the people of Wellington.

*Father Barry Scannell sm
Parish Priest*



Save with the CDF and you'll be helping the needy; each year all of CDF's operating surplus goes to the Archdiocese for social caring and pastoral services.

**Saving with us helps your Archdiocese.
Call 0800 4 233 233 or visit www.cdf.co.nz**



LT McGuinness LIMITED
BUILDING CONTRACTORS
9 Francis Place,
PO Box 9639, Wellington
Phone (04) 384 8455 Fax (04) 801 8455
Email: ltm@mcguinness.co.nz

Little Peckish Café
Feeling a little peckish?
Dukes Arcade • Great food, coffee, service
Office catering available
Phone 499 7769 • Mobile 0274 461 650

NEW WORLD WELLINGTON CITY
279 WAKEFIELD ST.
OPEN 7 DAYS | 7AM - MIDNIGHT
WWW.WGTNCITYNEWWORLD.CO.NZ

For Your Diaries : 2011 and 2012

Thursdays in Advent Meditations after midday Mass

Advent meditations will be held in the Church immediately after the midday Mass each Thursday for approximately 10-15 minutes. All welcome.

Sunday 11th December 2011 concert at St Joseph's Church, 3pm.

The SMP Ensemble - graduates from the New Zealand School of Music - will be giving a concert (incl. pieces by Psathas and Dvorak) to raise funds for the Refugee Family Reunification Trust. Tickets: \$25 (\$15 student/child).

Sunday 11th December 6pm-7pm, Viols In Performance

31 Hobson Crescent. A concert of fantasias, dances and consort songs by Jenkins, Simpson, Lupo, Byrd and Gibbons. With Loren Ludwig, treble & bass viols; Kevin Wilkinson & Susan Alexander, tenor viols; Robert Oliver, bass viol; and sopranos Amy van de Laar & Olivia Webb. Koha to help cover venue hire.

12th December Rite II Reconciliation. At St Joseph's, Mt Victoria at 6.30pm

Wednesday 14th December 'Carols with the Angels' 7.30pm

You are invited to bring your friends and enjoy the beautiful 'Carols with the Angels' in our Church. It is a wonderful way to prepare for the feast of the birth of Christ. The evening features our own Choirs and the Salvation Army Band. Father Peter Roe S.M. will be our guest soloist.

Thursday 15th December, 7.30pm 'Joshua End of Year Mass' at Connolly hall - Guilford Terrace off Hill Street, next to the Sacred Heart Cathedral.

A warm invitation to families and friends to come and join our final meeting for the year - a Christmas celebration Mass (celebrant; Fr John Grealley). This is a chance to come away from the busy time for prayer, praise, worship and celebration with refreshments afterward. For more information phone David; 3879714 (wk) 3881079 (hm).

Sunday 8th January 2012 Commemoration of Bishop Pompallier's First Mass in New Zealand 11am. You are invited to visit Totara Point, Northland in the Hokianga (the site of the first Catholic Mass in New Zealand). After Mass at Totara Point visitors are invited to Motuti, where Bishop Pompallier's remains are interred. The church will be open all day.

24-26 February 2012 Rachel's Vineyard Retreat (Wellington)

A weekend Retreat of spiritual and emotional healing for those whose lives have been touched by abortion. All enquiries are strictly confidential.

Contact Wendy Hill 027 254 9222 or info@rachelvineyard.org.nz

Traditional Latin Mass each Sunday of December, 12.30pm at St Mary of the Angels. Contact Neil Coup 021 896 924

Quality Te Aro Offices 5-7 Vivian Street, Wellington

Great location close to Cafe district
Busy arterial road
Air conditioned
Car parking available

Office suites available at an affordable price. Semi-serviced suites (approx 18sqm) that are fully furnished. There is also a company floor area (approx 200sqm) with 5x partitioned offices, Board room and Meeting room. Shared kitchen and shower facilities. Car parking available in the building at an additional rate.

This is a must see for new businesses on a budget.

Contact by e-mail for further information: mariabaldock@gmail.com

This newsletter is kindly sponsored by:
Michael Burrowes
of Burrowes and Company
Barristers and Solicitors
phone (04) 473 7733

BURROWES and Company

Barristers and Solicitors



A1 Auto Electrical Limited

17 -19 Webb Street, Wellington
Phone 384 2215

All Electrical Repairs
ABS and Air Bag Faults

Please Support our Sponsors

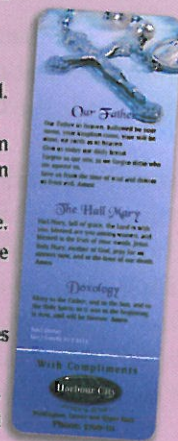
INTRODUCING The Rosary Card with our compliments

Easy reference to regularly used Rosary Prayers is now available on the Rosary Card. Small enough to double as a bookmark the Rosary Card can be left within prayer or hymn books, for re-use or can be taken home for personal use.

The Rosary Card features five regularly used prayers:

The Our Father, The Hail Mary, Doxology, The Apostles Creed, Hail Holy Queen.

Available free upon request. Simply call and we will send the quantity you require.



56 Onepu Road.
Kilbirnie
Telephone 3878-301

Members of Funeral Directors Association of New Zealand.

WEST PLAZA HOTEL

LOCATION • COMFORT • STYLE

Weekend Special \$120

One night's stay & cooked breakfast for two

Available Friday, Saturday and Sunday
Subject to availability

110 - 116 Wakefield Street, Wellington
p 0800 731 444

e reservations@westplaza.co.nz
book now westplaza.co.nz



Bullement Fortune Architects Ltd

Proud to be architects for the interior and exterior refurbishment of St Mary of the Angels

Registered Architect: Denis Fortune

3 Francis Place Te Aro
WELLINGTON
Ph: 04 385 0286

Email: bullement.fortune@extra.co.nz



Christian Supplies

www.christiansupplies.co.nz

- See our monthly newsletter in 'The Angelus'
- Freephone 0508 988 988 - Freefax 0508 988 989
email: order@pleroma.org.nz

The Angelus

St Mary of the Angels Parish

Church and Presbytery:

17 Boulcott Street,

Wellington Central

Telephone: 473 8074

Parish website: www.smoa.org.nz

St Mary of the Angels is a diverse community which seeks to praise and thank God in a place of calm and beauty and strives to be Christ alive in Central Wellington

Parish Priest

Fr Barry Scannell SM

smoapp@extra.co.nz

Assistant Priest

Fr Tom O'Connor SM

Adult Education

Fr Michael Young SM

Pastoral Worker

Sr Frances Gibbs CSB

Director of Music

Robert Oliver

robert.oliver@paradise.net.nz

Parish Manager

Penny Holden

smoamanager@extra.co.nz

Parish Office

smoaoffice@extra.co.nz

MASSES

Sunday 7am, 9am, 11am, 5pm

Monday to Friday 7.30am, 12.05pm, & 5.15pm

Saturday 11am

EACH MONTH

1st Saturday Marian Devotions
10:30am

4th Saturday 11am Mass with
Sacrament of Anointing

ADORATION

Monday to Friday 7:00-7:30am

Friday 11am- noon

RECONCILIATION

Monday to 11:30am - 12pm

Thursday 12:30-1pm, 4:30-5pm

Saturday 10:30-11am, 4:00-5:00pm

11th December 2011: 3rd Week of Advent, Year B

Carols with the Angels

This very popular annual event will be held this Wednesday evening, 14th Dec, at 7.30pm in our Church. Those who have attended in the past will recall a very special evening of Christmas Carols and music as we prepare for the birth of Christ.

Veteran broadcaster Ian Johnstone is again generously contributing his skills as MC. The Wellington Citadel Salvation Army Band also returns and our Maxwell Fernie Organ will of course be a major feature. The programme will include singing from Father Peter Roe sm and items from the St Mary of the Angels Choir, our new Young Angel Voices children's Choir and the Korean Community Choir.

We continue the tradition of children bringing forward small gifts to place under the Christmas tree. These gifts will be given to the St Vincent de Paul Society to distribute to needy families. Please indicate on the gift whether it is for a boy or girl and the age range of the gift.

There will also be a collection during the evening which will be going towards the earthquake strengthening of the Presbytery and the Church.

Plate of Food

We need to nourish our visitors who have generously given of their time and talent for 'Carols of the Angels'. If you are able to bake something or contribute a plate of food please leave it in the Parish Hall before the Carols begin or drop it into the Office sometime on Wednesday. Thank you.

Father Barry Scannell sm

Parish Priest

INVEST IN YOUR FAITH

CATHOLIC DEVELOPMENT FUND of WELLINGTON